

119 Jacket

Sizes 17, 18, 19, 20, 21

Back length approx. 58 cm (23 ins)

Materials

Novelty fabric,

width: 145 cm (57 ins)

length: 1.70 – 1.70 – 1.70 – 1.75 – 1.75 m
(1 7/8 – 1 7/8 – 1 7/8 – 2 – 2 yds).

Lining,

width: 140 cm (55 ins)

length: 1.05 – 1.05 – 1.05 – 1.10 – 1.10 m (11/4 yds).

Vilene/Pellon G 785.

6 small hooks and eyes and shoulder pads.

Recommended fabrics: Jacket fabrics of wool or blends.

Preparations

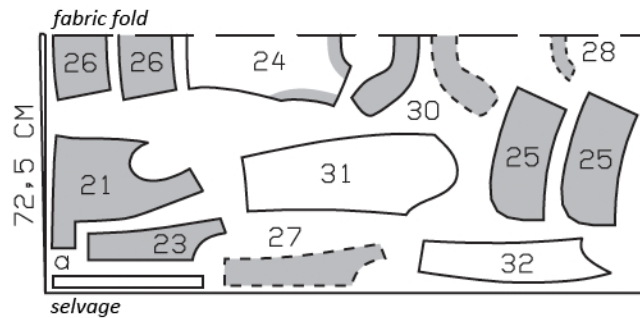
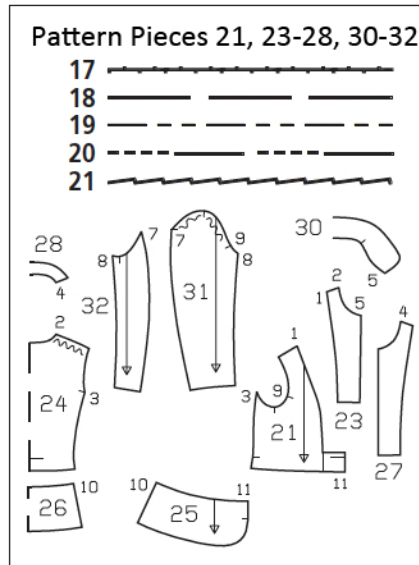
Print the pattern out on letter or A4 sized paper. It is very important to not scale or fit any of the pages, you must print the document in actual size. Your pattern will print on multiple pages, which you will then tile together. Arrange the sheets on a large, hard and flat surface matching up the numbers and letters (i.e. 6A to 6A). Cut or fold one of the sides and match the edge to it's corresponding side. Then, tape down in place so paper is secure.

Trace the pattern pieces from the pattern sheet following the lines and markings for the correct size and the correct style (119). This pattern also includes pattern pieces, lines and markings for style 117 and 118 that should be ignored.

burda style magazine patterns do not have seam allowance included.

To be added:

Seams and edges 1.5 cm (5/8 in),
sleeve hems 4 cm (1 5/8 ins), lining
1.5 cm (5/8 in).



Cut from a double layer of fabric, right side facing in. Use fabric with a width of 145cm.

Cutting Out

21 front	2x
23 front insert	2x
24 back, on a fold	1x
25 front peplum	4x
26 back peplum, on a fold	2x
27 front facing	2x
28 back facing, on a fold	1x
30 collar, on a fold	2x
31 upper sleeve	2x
32 under sleeve	2x

Draft the following piece NOT included in the pattern:

a) left fastening underlap, 41 – 42 – 43 – 43.5 – 44.5 cm (16 1/4 – 16 1/2 – 17 – 17 1/8 – 17 1/2 ins) long, 3 cm (1 1/4 ins) wide, finished width 1.5 cm (5/8 in).

Lining: piece 21 to lining line; piece 24 minus neck facing and with an ease pleat of approx. 2 cm (3/4 in) at centre back; also pieces 31 and 32.

Interfacing: See shaded area on pattern layout. Also interface hem allowances of sleeves. Fuse interfacing to wrong side of fabric.

Sewing

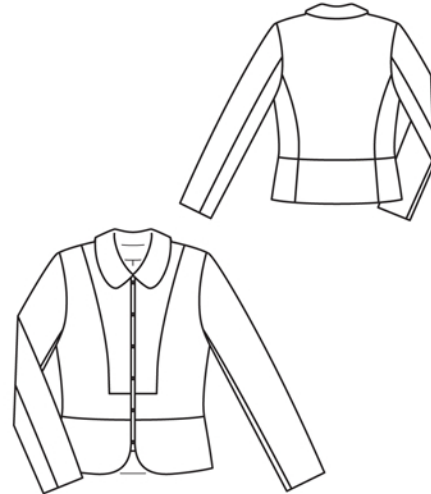
Stitch front inserts to front pieces, from each seam number 1 to corner. At corners, clip allowances of fronts close to ends of stitching. Stitch inserts to front pieces, from each corner to front edge. Press seam allowances toward inserts.

Stitch shoulder seams on jacket and facing. Stitch fronts to back (seam number 3). Press seam allowances open.

Stitch each front peplum piece to back peplum piece (seam number 10). Stitch one peplum unit to lower front and back edge, right sides facing. Press seam allowances onto peplum. Lay other peplum unit (inside unit) aside.

Fold underlap lengthwise, right side facing in. Stitch across top and bottom ends. Turn underlap right side out and press. Lay underlap on left front – top end of underlap meets corner of neck edge. Baste underlap to front edge.

Stitch bottom ends of front facings right sides together with inside peplum unit. At inside facing edges, clip seam allowance of peplum. Press seam allowances open. On front edges of facing and peplum, mark 6 openings for the hook-and-eye fastening, each 5 mm (3/16 in) long, and evenly spaced, – mark top opening 5 mm (3/16 in) below neck edge and mark second opening from the bottom 1 cm (3/8 in) above peplum attachment seam. Pin inside peplum right sides together with attached peplum. Pin front facings to fronts, catching underlap on left front. Stitch along front edges and peplum edges, leaving seam open between pairs of markings, for hook fastening. Trim seam allowances. Turn peplum right side out. Turn —facings to inside and turn underlap forward. Press edges. Slide hooks to outside through seam openings in the right edge and slide eyes to outside through seam openings in left edge. Sew ends of hooks and eyes to facings. Lay inside edge of peplum over attachment seam and pin. Edgestitch peplum to attachment seam.



Stitch collar pieces together along outer edges, right sides facing, beginning and ending stitching exactly on seam line. Turn collar right side out and press. At neck edge, open facing out again (right fabric sides lie together). Lay collar between jacket and facing. Stitch under collar to neck edge of jacket and stitch top collar to facing. Press seam allowances open. Turn facing to inside. Pin collar joining seams together. Turn back facing up again and sew seam allowances together, close to collar joining seams. Turn facing down.

Stitch sleeve seams. Press sleeve hem allowances to inside and sew in place by hand.

Set in sleeves, easing sleeve caps. Sew shoulder pads in place.

Stitch lining seams. Stitch lining right sides together with inside facing edge, leaving approx. 3 cm (1 1/4 ins) open at bottom. Lay lining inside jacket with wrong sides facing, pulling linings into sleeves. Turn lower lining edges under and sew to inside facing edges and to peplum attachment seam. Turn edges of sleeve linings under and sew to hem allowances. Lay extra length of lining down and press.