

112 Skirt

Sizes **34, 36, 38, 40, 42, 44**

Skirt length 62 cm (24 1/2 ins)

Waistband attachment seam is 2 cm (3/4 in) below waist

Materials

Novelty fabric,
width: 145 cm (57 ins)
length: 1.20 m (13/8 yds) for all sizes.

A piece of lining fabric, 35 x 40 cm (14 x 16 ins).

Petersham ribbon, (for the waistband)
width: 2.5 cm (1 in)
length: 1.50 – 1.60 – 1.65 – 1.75 – 1.80 – 1.90 m
(1 3/4 – 1 3/4 – 17/8 – 2 – 2 – 2 1/8 yds).

Vilene/Pellon G 785.

1 invisible zipper, 22 cm (9 ins) long,

1 sew-on snap fastener.

Recommended fabrics: Softly draping skirt fabrics.

Preparations

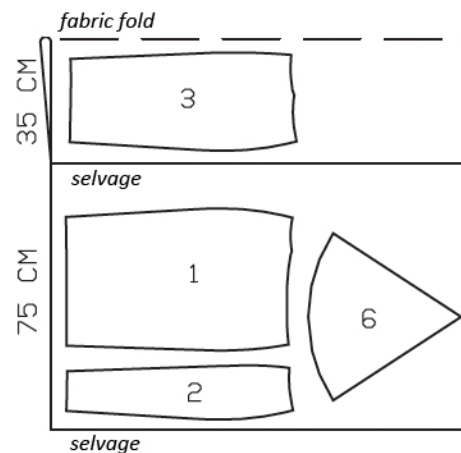
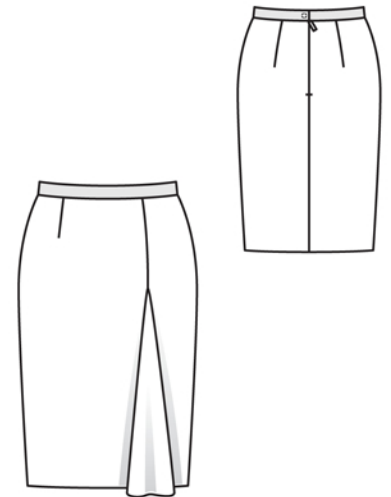
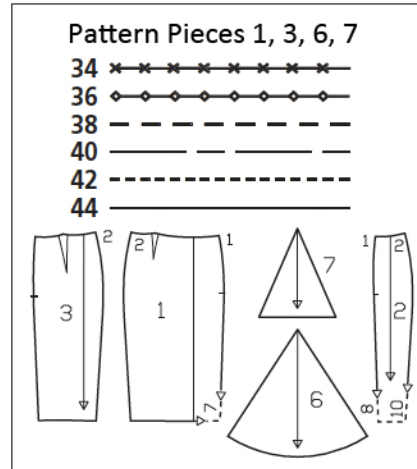
Print the pattern out on letter or A4 sized paper. It is very important to not scale or fit any of the pages, you must print the document in actual size. Your pattern will print on multiple pages, which you will then tile together. Arrange the sheets on a large, hard and flat surface matching up the numbers and letters (i.e. 6A to 6A). Cut or fold one of the sides and match the edge to it's corresponding side. Then, tape down in place so paper is secure.

Trace the pattern pieces from the pattern sheet following the lines and markings for the correct size and the correct style (112). This pattern also includes pattern pieces, lines and markings for style 111 that should be ignored.

burda style magazine patterns do not have seam allowance included.

To be added:

Seams and edges 1.5 cm (5/8 in),
hem 3 cm (1 1/4 ins) (also on godet).



Fold the fabric as shown in the pattern layout. Right side faces in on a double layer of fabric; right side faces up on a single layer of fabric. Lay the asymmetric front skirt panels on the right side of the fabric, with their printed sides facing up.

Cutting Out

Novelty fabric:

1 right front skirt panel 1x
2 left front skirt panel 1x
3 back skirt panel 2x
6 godet 1x

Lining:

7 godet 1x

Interfacing: To give the seams of loosely woven fabrics more stability, iron strips of interfacing, approx. 2 cm (3/4 in) wide, to wrong side of fabric, over the marked seam lines.

Sewing

Stitch front and back darts. Press darts toward centres.

Stitch front section seam from upper edge to seam mark. Press seam allowances open.

Stitch godet (piece 6) to front skirt panels below seam mark. Press seam allowances of godet joining seams open.

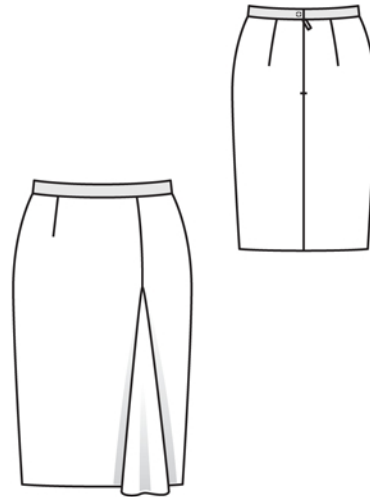
nSew invisible zip to back skirt pieces, see the "Helpful Hint" on next page. Stitch centre back seam from lower edge to zip.

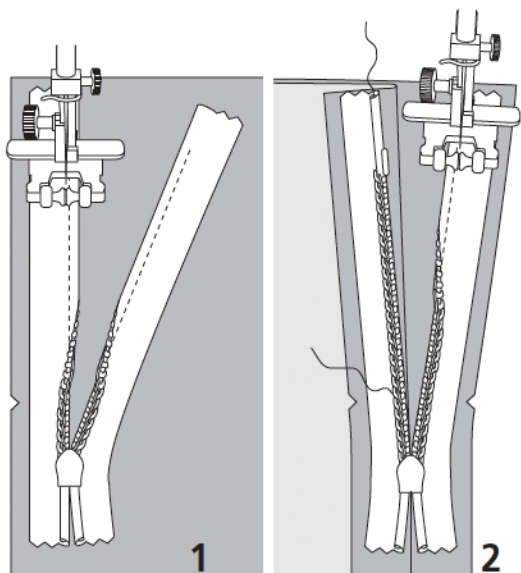
Stitch side seams, right sides together.

Waistband: On petersham ribbon, turn one end under, approx. 1 cm (3/8 in) wide, and press. Measure and mark 69 – 73 – 77 – 81 – 85 – 89 cm (27 1/4 – 28 3/4 – 30 1/2 – 32 – 33 1/2 – 35 ins) from this end. Lay petersham ribbon on inside of seam allowance on upper skirt edge so that pressed-under end extends 2.5 cm (1 in) past right back slit edge and marking meets left slit edge. Edgestitch lower edge of ribbon in place. Fold ribbon over left slit edge, to outside. Pin ribbon edges together, catching seam allowance of skirt. Turn ribbon end under. Edgestitch ribbon edges together. Sew upper snap half to inside of left waistband end. Sew lower snap half to right waistband end, to match.

Press hem allowance to inside and sew in place by hand.

Press allowance on lower edge of godet lining to inside and stitch. On inside, lay godet lining over attached godet – top pointed ends lie one on the other. Stitch side edges of lining piece to seam allowances, close to godet joining seams.





These special zippers come in various lengths. The zipper should be at least 2 cm (3/4 in) longer than the slit. It is sewn in place before the seam below the slit is stitched. A special presser foot is required to sew the zipper in place.

Sewing the zipper in place:

Open the zipper and push the coil back with your thumbnail to reveal the seam marking between the tape and the coil. Place the open zipper right side down on the right fabric side of one slit edge.

In order to stitch the zipper in place exactly along the marked seam line, you must first calculate the distance between the tape edge and the fabric edge as follows: width of seam allowance minus 1 cm (3/8 in) tape width = distance from edge of fabric. This will yield a value of 5 mm (3/16 in) if the width of the seam allowance is 1.5 cm (5/8 in).

Pin the top end of the zipper tape in place, the calculated distance from the edge of the fabric. The bottom end of the zipper will extend past the marked end of the slit. Place the presser foot on the zipper so that the coil is in the notch to the right of the needle (1). Stitch zipper in place, from the top to the marked end of the slit. Close zipper.

Place the other zipper tape face down on the opposite slit edge and pin in place at the top. Open zipper again. Place the presser foot on the top end of the zipper so that the coil is in the notch to the left of the needle (2). Sew the zipper in place, from the top to the end of the slit. Close zipper.

Now stitch the seam below the zipper, from bottom to top. Turn the loose lower end of the zipper out of the way, over the seam allowance. Stitch as close as possible to the last stitches of the zipper seams. Trim away excess zipper and bind the end with a scrap of fabric.