

108 Blouse

Sizes 36, 38, 40, 42, 44

Back length approx. 65 cm (26 ins)

Materials

Satin,

width: 140 cm (55 ins)

length: 1.70 – 1.70 – 1.75 – 1.75 – 1.80 m
(1 7/8 – 1 7/8 – 2 – 2 – 2 yds).

Vilene/Pellon G 785 and Vilene Bias Tape/ stay tape.

2 invisible zips, 22 cm (9 ins) long

1 small button and 10 sew-on snap fasteners for the collar.

Neck embellishment: 1 beaded tulle insert.
Petersham ribbon, 1.5 cm (5/8 in) wide and 1.20 m (1 3/8 yds) long.

Recommended fabrics: Lightweight blouse fabrics.

Preparations

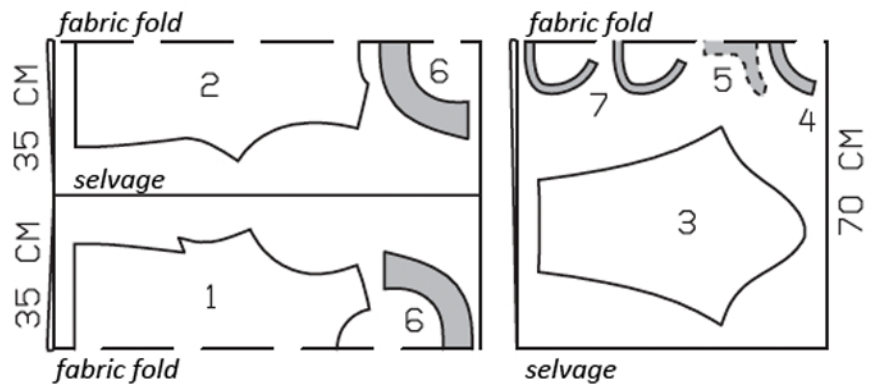
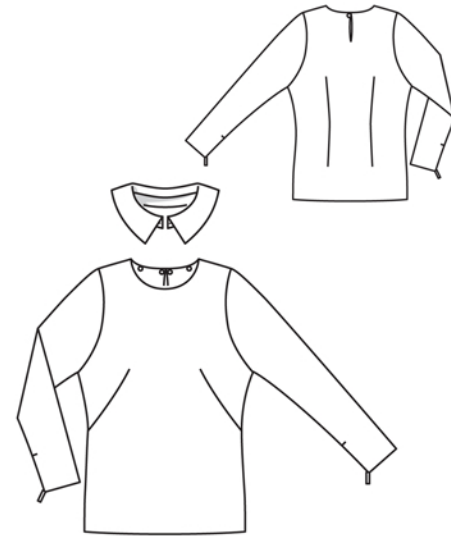
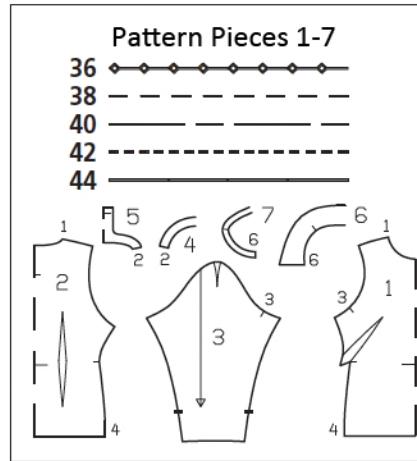
Print the pattern out on letter or A4 sized paper. It is **very important** to not scale or fit any of the pages, you must print the document in **actual size**. Your pattern will print on multiple pages, which you will then tile together. Arrange the sheets on a large, hard and flat surface matching up the numbers and letters (i.e. 6A to 6A). Cut or fold one of the sides and match the edge to it's corresponding side. Then, tape down in place so paper is secure.

Trace the pattern pieces from the pattern sheet following the lines and markings for the correct size and the correct style (108). This pattern also includes pattern pieces, lines and markings for style 109 and 110 that should be ignored.

burda style magazine patterns do not have seam allowance included.

To be added:

Seams and edges 1.5 cm (5/8 in), collar and band 1 cm (3/8 in), hem and sleeve hems 4 cm (1 5/8 ins) (flare sleeve hem allowance).



Fold the fabric as shown in the pattern layout, right side facing in. Use fabric with a width of 140cm.

Cutting Out

1 front, on a fold	1x
2 back, on a fold	1x
3 sleeve	2x
4 front neck facing, on a fold	1x
5 back neck facing, on a fold	1x
6 collar, on a fold	2x
7 band, on a fold	2x

Interfacing: See shaded area on pattern layout. Iron Vilene Bias Tape/ stay tape to wrong sides of front shoulder seam edges.

Sewing

Stitch the darts. Press the bust darts down. Press the back darts toward the centre. Stitch the shoulder seams on the blouse and the facing. Press the seam allowances open.

Back slit and neck edge: Pin facing right sides together with neck edge and with back, over slit mark. Stitch from wrong side along line of neck edge and closely around slit mark. Slash between lines of stitching and clip diagonally into bottom corners. Trim seam allowances along neck edge and clip close to stitching along curves. On neck edge, turn facing up and stitch to seam allowances as far as possible, close to seam. Turn facing to inside. Press edges.

Stitch darts in sleeve caps. Press darts toward back. Stitch sleeves to armhole edges. Press seam allowances toward sleeves.

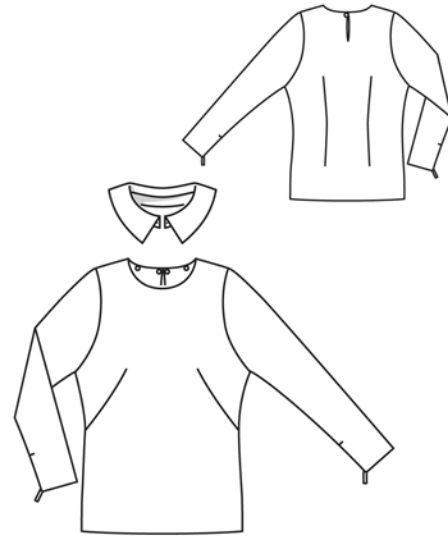
Sew invisible zips to slit edges on sleeves, from hem line to slit mark, see the "Helpful Hint" on next page. Leave top ends of zip tapes loose. Zip should open from bottom to top. Turn in top ends of zip tapes and sew in place.

Stitch side seams and sleeve seams as continuous seams, up to zips.

Press hem allowances on blouse and sleeves to inside and sew in place by hand.

Fasten back slit with a button and thread loop.

Detachable collar: Stitch collar pieces together along outer edges, with right sides facing. Trim the seam allowances. Turn collar right side out and press. Lay band pieces together, right sides facing. Stitch across ends and along longer outer edge, beginning and ending stitching at ends, exactly on seam line of joining edge. Turn band right side out. Stitch one band piece to collar. Turn edge of other piece under and baste to joining seam. Topstitch band close to joining seam. Close back slit of blouse then lay collar on blouse. Fold band over neck edge to inside – ends meet at centre front. Attach band to inside neck edge of blouse, with 10 snaps.



Neck embellishment: On narrow ends of insert and on upper edge of insert, stitch line of small zigzag stitches, 1 cm (3/8 in) from beads. Trim edge of tulle close to the stitching. Cut the petersham ribbon into 2 pieces and stitch under ends of insert, at level of row of beads. Lay neck embellishment under blouse collar and tie in back.



These special zippers come in various lengths. The zipper should be at least 2 cm (3/4 in) longer than the slit. It is sewn in place before the seam below the slit is stitched. A special presser foot is required to sew the zipper in place.

Sewing the zipper in place:

Open the zipper and push the coil back with your thumbnail to reveal the seam marking between the tape and the coil. Place the open zipper right side down on the right fabric side of one slit edge.

In order to stitch the zipper in place exactly along the marked seam line, you must first calculate the distance between the tape edge and the fabric edge as follows: width of seam allowance minus 1 cm (3/8 in) tape width = distance from edge of fabric. This will yield a value of 5 mm (3/16 in) if the width of the seam allowance is 1.5 cm (5/8 in).

Pin the top end of the zipper tape in place, the calculated distance from the edge of the fabric. The bottom end of the zipper will extend past the marked end of the slit. Place the presser foot on the zipper so that the coil is in the notch to the right of the needle (1). Stitch zipper in place, from the top to the marked end of the slit. Close zipper.

Place the other zipper tape face down on the opposite slit edge and pin in place at the top. Open zipper again. Place the presser foot on the top end of the zipper so that the coil is in the notch to the left of the needle (2). Sew the zipper in place, from the top to the end of the slit. Close zipper.

Now stitch the seam below the zipper, from bottom to top. Turn the loose lower end of the zipper out of the way, over the seam allowance. Stitch as close as possible to the last stitches of the zipper seams. Trim away excess zipper and bind the end with a scrap of fabric.