

114 Top

Sizes 34, 36, 38, 40, 42

Length from waist at centre front: 22 cm (8 3/4 ins); at centre back: 35 cm (13 3/4 ins)

Materials

Cloqué,
width: 135 cm (53 ins)
length: 1.70 – 1.70 – 1.75 – 1.80 – 1.80 m
(1 7/8 – 1 7/8 – 2 – 2 – 2 yds).

Vilene/Pellon G 785.

1 invisible zip, 60 cm (24 ins) long,

Collar:
guipure lace, a piece approx. 75 x 15 cm (30 x 6 ins).

A piece of batiste 60 x 25 cm (24 x 10 ins).

10 small sew-on snap fasteners.

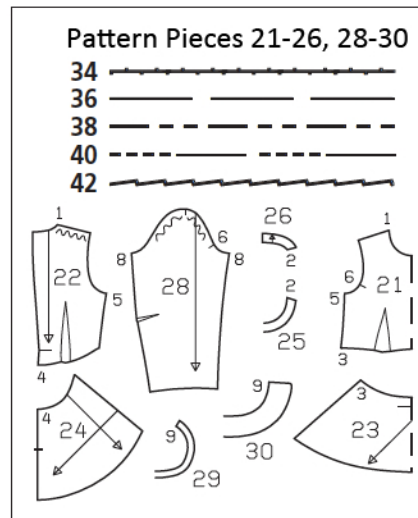
Recommended fabrics: Fabrics with some body.
Guipure lace for the collar.

Preparations

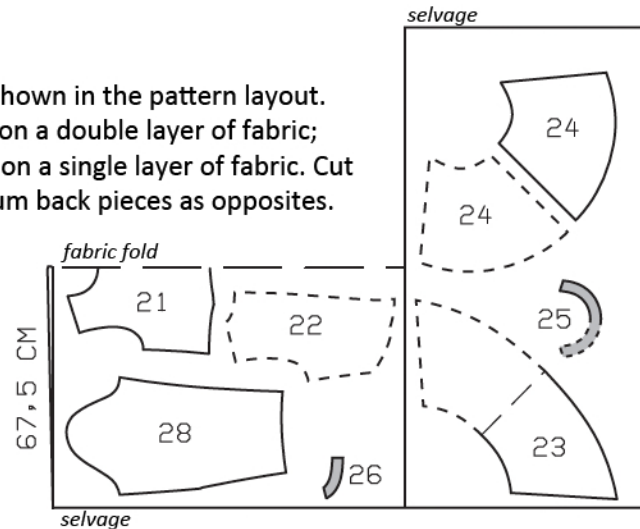
Print the pattern out on letter or A4 sized paper. It is **very important** to not scale or fit any of the pages, you must print the document in **actual size**. Your pattern will print on multiple pages, which you will then tile together. Arrange the sheets on a large, hard and flat surface matching up the numbers and letters (i.e. 6A to 6A). Cut or fold one of the sides and match the edge to it's corresponding side. Then, tape down in place so paper is secure.

Trace the pattern pieces from the pattern sheet following the lines and markings for the correct size and the correct style (114). This pattern also includes pattern pieces, lines and markings for style 113 and 115 that should be ignored.

Pattern piece 30 is a template for the collar, it is not used to cut out the fabric. To trace the template, fold the tracing paper and place the fold edge at the centre back. Unfold the template after cutting out.



Fold the fabric as shown in the pattern layout. Right side faces in on a double layer of fabric; right side faces up on a single layer of fabric. Cut right and left peplum back pieces as opposites.



Cutting Out

Cloqué:		
21 front, on a fold	1x	
22 back	2x	
23 front peplum, on a fold	1x	
24 back peplum	2x	
25 front neck facing, on a fold	1x	
26 back neck facing	2x	
28 sleeve	2x	

Interfacing: See shaded area on pattern layout. Also iron strips of interfacing, approx. 2 cm (3/4 in) wide, to wrong side of zip slit edges.

Collar

Batiste:
29 band, on a fold 2x

Interfacing: Iron to wrong side of band pieces.

burda style magazine patterns do not have seam allowance included.

To be added:
Seams and edges 1.5 cm (5/8 in),
hem 4 cm (15/8 ins), lining 1.5 cm (5/8 in).

Sewing

Top

Stitch front darts. Lay centre of each dart fold over seam and press from wide end toward point. Stitch back darts and press toward centre back.

Stitch peplum pieces to front and back pieces. Press seam allowances down.

Sew invisible zip to back slit edges, see the "Helpful Hint" on next page. Stitch centre back seam from lower edge to zip. Press seam allowances open.

Stitch side seams, shoulder seams, and facing seams.

Neck edge: Pin facing right sides together with neck edge. At zip slit, turn facing back, approx. 5 mm (3/16 in) before slit edge, and pin to neck edge. Turn slit allowances to outside and pin to neck edge, over facing. Stitch along neck edge. Turn allowances on slit edges to inside. Turn facing up and stitch to seam allowances, as far as possible, close to seam. Turn facing to inside and sew to zip tapes and to shoulder seams.

Sleeves: Stitch sleeve darts. Press darts down. Stitch sleeve seams, right sides together. Press sleeve hem allowances to inside and sew in place by hand. Set in sleeves, easing sleeve caps.

Press hem allowance to inside and sew in place by hand.

Collar

Lay lace fabric on the template. Cut from inside edge of collar, between each of the lace motifs and overlap and pin the cut edges, to form the rounded shape of the collar. Cut outer edges along edges of lace motifs. On the inside edge, measure a 1.5 cm (5/8 in) wide seam allowance and trim away the remaining lace. At the cuts, use small hand-stitches to sew edges of motifs which lie on top to the underlying lace fabric. Then carefully trim away the lower layer of fabric.



On band pieces, press allowance on shorter inside edge to wrong side. Lay band pieces together, right sides facing. Stitch together across ends and along longer outer edge. Trim seam allowances. Turn band right side out. Lay outer edge of collar between open band edges. Edgestitch band edges together. Close the zip. Lay the collar on the top and fold the band over the neck edge to the inside – ends meet at centre front. Attach band with 10 snaps.



These special zippers come in various lengths. The zipper should be at least 2 cm (3/4 in) longer than the slit. It is sewn in place before the seam below the slit is stitched. A special presser foot is required to sew the zipper in place.

Sewing the zipper in place:

Open the zipper and push the coil back with your thumbnail to reveal the seam marking between the tape and the coil. Place the open zipper right side down on the right fabric side of one slit edge.

In order to stitch the zipper in place exactly along the marked seam line, you must first calculate the distance between the tape edge and the fabric edge as follows: width of seam allowance minus 1 cm (3/8 in) tape width = distance from edge of fabric. This will yield a value of 5 mm (3/16 in) if the width of the seam allowance is 1.5 cm (5/8 in).

Pin the top end of the zipper tape in place, the calculated distance from the edge of the fabric. The bottom end of the zipper will extend past the marked end of the slit. Place the presser foot on the zipper so that the coil is in the notch to the right of the needle (1). Stitch zipper in place, from the top to the marked end of the slit. Close zipper.

Place the other zipper tape face down on the opposite slit edge and pin in place at the top. Open zipper again. Place the presser foot on the top end of the zipper so that the coil is in the notch to the left of the needle (2). Sew the zipper in place, from the top to the end of the slit. Close zipper.

Now stitch the seam below the zipper, from bottom to top. Turn the loose lower end of the zipper out of the way, over the seam allowance. Stitch as close as possible to the last stitches of the zipper seams. Trim away excess zipper and bind the end with a scrap of fabric.