

102 Dress

Sizes 34, 36, 38, 40, 42,

Length from waist 68 cm (26 3/4 ins)

Materials

Stretch fabric, with widthwise ribs and lengthwise stretch, cut widthwise.

width: 150 cm (59 ins)

length: 1.35 – 1.35 – 1.45 – 1.50 – 1.55 m

(1 5/8 – 1 5/8 – 1 3/4 – 1 3/4 – 1 3/4 yds)

Stretch lining for the dress bodice, cut on lengthwise grain.

width: 140 cm (55 ins)

length: 0.70 – 0.70 – 0.70 – 0.75 – 0.75 m (7/8 yd),

Vilene Bias Tape/ stay tape.

1 invisible zip, 40 cm (16 ins) long,

Shoulder pads.

Recommended fabrics: Stretch dress fabrics. Use stretch fabrics only.

Preparations

Print the pattern out on letter or A4 sized paper. It is **very important** to not scale or fit any of the pages, you must print the document in **actual size**. Your pattern will print on multiple pages, which you will then tile together. Arrange the sheets on a large, hard and flat surface matching up the numbers and letters (i.e. 6A to 6A). Cut or fold one of the sides and match the edge to it's corresponding side. Then, tape down in place so paper is secure.

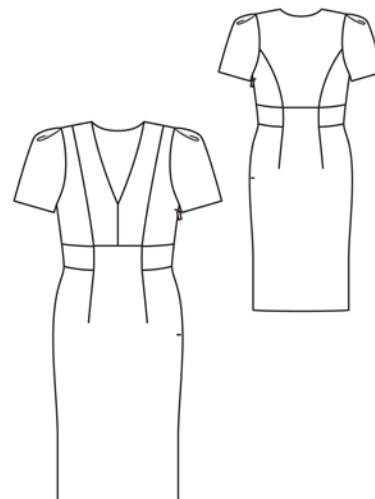
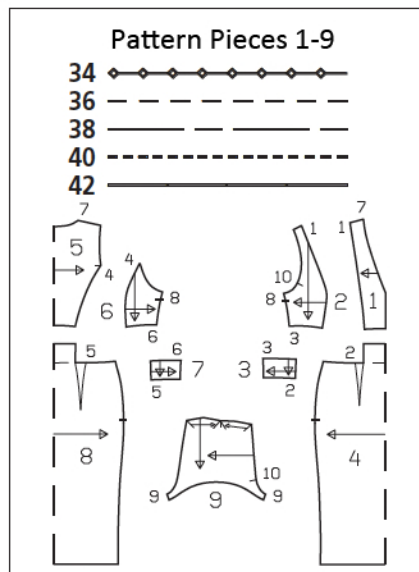
Trace the pattern pieces from the pattern sheet following the lines and markings for your size.

burda style magazine patterns do not have seam allowance included.

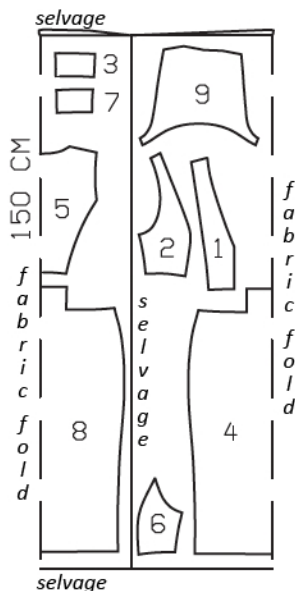
To be added:

Seams and edges 1.5 cm (5/8 in),

hem 4 cm (1 5/8 ins).



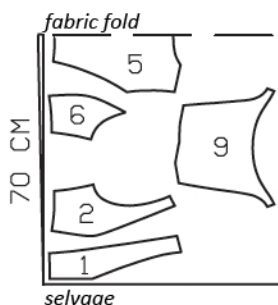
Stretch Fabric, 150cm wide



Fold the fabric as shown in the pattern layout, right side facing in. Use indicated fabric widths.

Note: In order to have the finished dress stretch widthwise, fabrics with lengthwise stretch must be cut on the widthwise grain, see the marked grain line. Fabrics with widthwise stretch are cut on the lengthwise grain, as usual. If your fabric has two-way stretch, determine in which direction the fabric stretches most.

Lining, 140cm wide



Cutting Out

1 centre front	2x
2 side front	2x
3 front skirt yoke	2x
4 front skirt panel, on a fold	1x
5 centre back, on a fold	1x
6 side back	2x
7 back skirt yoke	2x
8 back skirt panel, on a fold	1x
9 sleeve	2x

Lining: pieces 1, 2, 5, 6, 9.

Cut lining pieces on lengthwise grain, see also pattern layout.

Vilene Bias Tape/ stay tape: Iron to wrong sides of neck and armhole edges and edges of zip slit.

Sewing

On centre front pieces, stitch centre front seam, beginning at upper edge, exactly on marked neck edge. Stitch front section seams. Press seam allowances open.

On front skirt piece cut each dart along centre, to approx. 5 cm (2 ins) from the point. Stitch the front skirt yokes to the front skirt panel (seam number 2). Press the seam allowances open. Beginning at upper edge, stitch each yoke to the front skirt panel then stitch the dart, as a continuous seam. Press the seam allowances open, pressing the points of the darts flat.

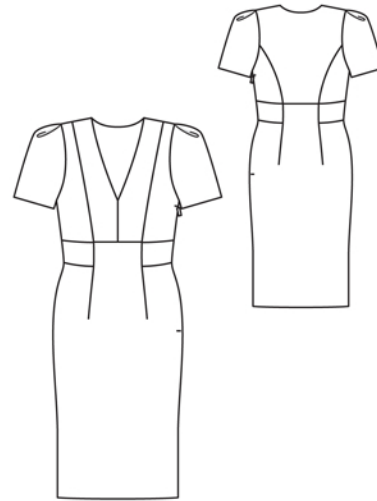
Stitch the front to the front yokes and the front skirt panel, from seam number 3. Press the seam allowances open.

Stitch the back piece, back skirt panel, and skirt yokes together as described for the front.

Sew the invisible zip to the left side edges, between the slit marks, see the "Helpful Hint" on next page. Leave the top ends of the zip tapes loose. Teeth of zip begin at slit mark. Stitch the left side seam, from the armhole to the zip and from the hem line to the zip.

Stitch right side seam and stitch shoulder seams, right sides together.

Stitch the seams of the lining. Leave the slit for the zip open, as mirror image of dress. Pull the lining over the dress, right sides facing, and pin to the neck edge. Stitch along the neck edge. Trim the seam allowances. Turn the lining up and stitch to seam allowances, close to seam. Turn the lining to the inside and baste to the armhole edges. Turn lining edges under and sew to zip tapes. Lay the lower lining edge flat over the skirt joining seam and stitch to the seam allowances, as far as possible.



Lay the sleeve linings on the sleeves, with right sides facing. Stitch lower edges together. Turn the sleeve linings down and stitch to the seam allowances, close to seam. Stitch each sleeve seam as continuous seam. Lay the sleeve linings on the sleeves, with wrong sides facing. Baste open edges together. Lay the pleats in the sleeve caps, in direction of arrows, and baste.

Set in the sleeves. Above the underarm curves, press the allowances of the sleeve attachment seams toward sleeves. Cover shoulder pads with lining. Sew shoulder pads in place.

Press hem allowance to inside and sew in place by hand.



These special zippers come in various lengths. The zipper should be at least 2 cm (3/4 in) longer than the slit. It is sewn in place before the seam below the slit is stitched. A special presser foot is required to sew the zipper in place.

Sewing the zipper in place:

Open the zipper and push the coil back with your thumbnail to reveal the seam marking between the tape and the coil. Place the open zipper right side down on the right fabric side of one slit edge.

In order to stitch the zipper in place exactly along the marked seam line, you must first calculate the distance between the tape edge and the fabric edge as follows: width of seam allowance minus 1 cm (3/8 in) tape width = distance from edge of fabric. This will yield a value of 5 mm (3/16 in) if the width of the seam allowance is 1.5 cm (5/8 in).

Pin the top end of the zipper tape in place, the calculated distance from the edge of the fabric. The bottom end of the zipper will extend past the marked end of the slit. Place the presser foot on the zipper so that the coil is in the notch to the right of the needle (1). Stitch zipper in place, from the top to the marked end of the slit. Close zipper.

Place the other zipper tape face down on the opposite slit edge and pin in place at the top. Open zipper again. Place the presser foot on the top end of the zipper so that the coil is in the notch to the left of the needle (2). Sew the zipper in place, from the top to the end of the slit. Close zipper.

Now stitch the seam below the zipper, from bottom to top. Turn the loose lower end of the zipper out of the way, over the seam allowance. Stitch as close as possible to the last stitches of the zipper seams. Trim away excess zipper and bind the end with a scrap of fabric.