

### 121 Dress

Sizes **72, 76, 80, 84, 88**

Length from waist 66 cm (26 ins)

3/4-sleeves, approx. 47 cm (18 ins) long

### Materials

**Wool fabric,**

width: 150 cm (59 ins)

length: 1.80 – 1.85 – 1.85 – 1.90 – 1.90 m

(2 – 2 1/8 – 2 1/8 – 2 1/8 – 2 1/8 yds).

**Lining,**

width: 140 cm (55 ins)

length: 1.25 – 1.30 – 1.30 – 1.35 – 1.35 m

(1 1/2 – 1 1/2 – 1 1/2 – 1 5/8 – 1 5/8 yds).

Vilene Bias Tape/ stay tape.

1 invisible zip, 60 cm (24 ins) long

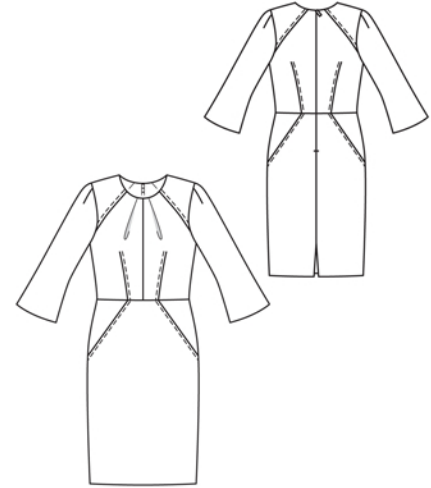
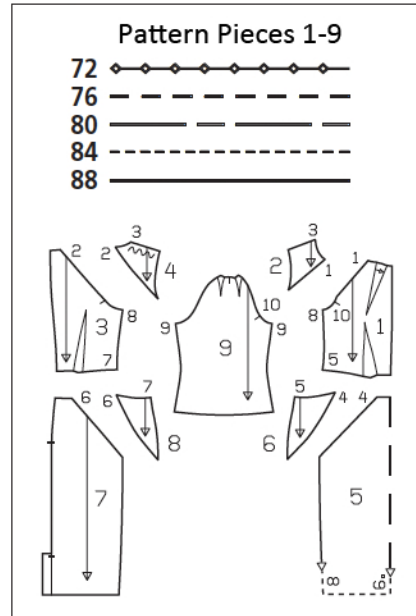
**Recommended fabrics:** Dress fabrics with some body.

### Preparations

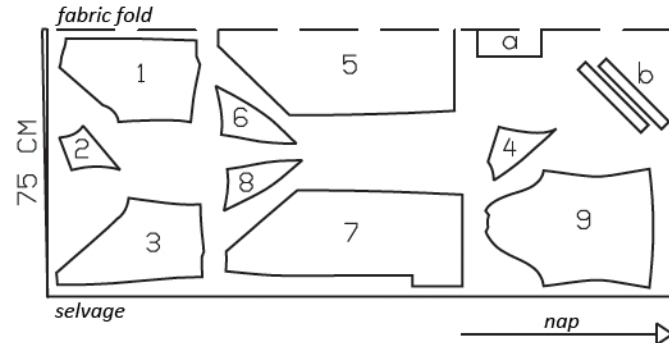
Print the pattern out on letter or A4 sized paper. It is **very important** to not scale or fit any of the pages, you must print the document in **actual size**. Your pattern will print on multiple pages, which you will then tile together. Arrange the sheets on a large, hard and flat surface matching up the numbers and letters (i.e. 6A to 6A). Cut or fold one of the sides and match the edge to it's corresponding side. Then, tape down in place so paper is secure.

Trace the pattern pieces from the pattern sheet following the lines and markings for the correct size and the correct style (121). This pattern also includes pattern pieces, lines and markings for style 120 that should be ignored.

The upper dart on piece 1 applies for the lining only. The pleat arrow applies for the main fabric. The pleat arrow marked on the pattern is for size 72. For the other sizes, mark the pleat arrow the same distance from neck edge as for size 72.



Cut from a double layer of fabric, right side facing in. Note direction of nap. Use fabric with a width of 150cm.



### Cutting Out

**Wool fabric:**

- |                                |    |
|--------------------------------|----|
| 1 front                        | 2x |
| 2 front shoulder yoke          | 2x |
| 3 back                         | 2x |
| 4 back shoulder yoke           | 2x |
| 5 front skirt panel, on a fold | 1x |
| 6 front skirt yoke             | 2x |
| 7 back skirt panel             | 2x |
| 8 back skirt yoke              | 2x |
| 9 sleeve                       | 2x |

**Draft the following pieces NOT included in the pattern:**

a) underlap for vent, 22 cm (8 3/4 ins) long, including 4 cm (1 5/8 ins) for hem, 15 cm (6 ins) wide, cut without allowances,

b) 4 bias strips, 25 cm (10 ins) long, 3 cm (1 1/4 ins) wide (incl. allowances).

**burda style magazine patterns do not have seam allowance included.**

To be added:

Seams and edges 1.5 cm (5/8 in), hem 4 cm (1 5/8 ins), lining 1.5 cm (5/8 in).

**Lining:** pieces 1 to 6 and 8, plus piece 7 without vent allowance.

**Vilene Bias Tape/ stay tape:** Iron to wrong side of neck and arm-hole edges of lining pieces.

## Sewing

Stitch centre seam on bodice front. Press seam allowances open.

Stitch front shoulder yoke pieces to bodice front and back shoulder yoke pieces to bodice backs. Topstitch yokes close to seams.

Stitch vertical darts, catching bias strips at dart lines which lie toward the centre. Press darts to the side and press bias strips to centre. Topstitch (1/4 in) from dart seams (over bias strips), tapering stitching at top of dart.

Work from inside to stitch pleats in front, from neck edge to arrow markings. Lay pleats in direction of arrows and press pleat seams. Baste pleats to neck edge.

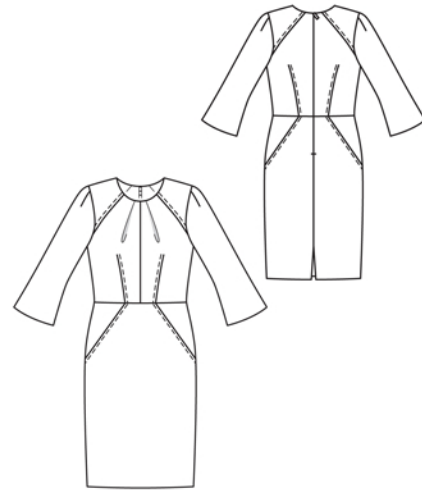
Stitch front skirt yokes to front skirt panel and back skirt yokes to back skirt panels. Topstitch skirt panels close to yoke joining seams. Stitch front skirt panel to bodice front and back skirt panels to bodice backs. Press seam allowances open.

Sew invisible zip to back slit edges, see the "Helpful Hint" on next page. Stitch centre back seam from vent to zip.

Stitch side seams and shoulder seams, right sides together.

Stitch darts and seams of lining, leaving a slit, 20 cm (8 ins) long, in one side seam of lining, as walking slit. Stitch centre back seam from zip to hem edge.

**Face neck edge with lining:** Pin lining right sides together with neck edge of dress. At zip slit, turn lining back, approx. 5 mm (3/16 in) before slit edge, and pin to neck edge. Turn allowances on slit edges of dress to outside and pin in place, over lining. Stitch along neck edge. Turn allowances of slit edges to inside. Turn lining up and stitch to seam allowances, as far as possible, close to seam. Turn lining to inside and sew to zip tapes.



Baste lining to armhole edges.

Stitch darts in sleeve caps. Press darts toward centre. Stitch sleeve seams. Press sleeve hem allowances to inside and sew in place by hand.

Set in sleeves. In shoulder areas, press allowances of sleeve attachment seams open.

Press hem allowance of dress to inside and sew in place by hand. Press allowances of back slit edges to inside and sew to hem edge. Hem lining so that it is 2 cm (3/4 in) shorter than dress. Turn allowances of side lining to wrong side and stitch in place.

On underlap for back vent, press hem allowance to inside and sew in place by hand. Pin underlap to lining, at centre back, with wrong sides facing, so that it extends past hem edge by 1.5 cm (5/8 in). Stitch underlap to lining.



These special zippers come in various lengths. The zipper should be at least 2 cm (3/4 in) longer than the slit. It is sewn in place before the seam below the slit is stitched. A special presser foot is required to sew the zipper in place.

### **Sewing the zipper in place:**

Open the zipper and push the coil back with your thumbnail to reveal the seam marking between the tape and the coil. Place the open zipper right side down on the right fabric side of one slit edge.

In order to stitch the zipper in place exactly along the marked seam line, you must first calculate the distance between the tape edge and the fabric edge as follows: width of seam allowance minus 1 cm (3/8 in) tape width = distance from edge of fabric. This will yield a value of 5 mm (3/16 in) if the width of the seam allowance is 1.5 cm (5/8 in).

Pin the top end of the zipper tape in place, the calculated distance from the edge of the fabric. The bottom end of the zipper will extend past the marked end of the slit. Place the presser foot on the zipper so that the coil is in the notch to the right of the needle (1). Stitch zipper in place, from the top to the marked end of the slit. Close zipper.

Place the other zipper tape face down on the opposite slit edge and pin in place at the top. Open zipper again. Place the presser foot on the top end of the zipper so that the coil is in the notch to the left of the needle (2). Sew the zipper in place, from the top to the end of the slit. Close zipper.

Now stitch the seam below the zipper, from bottom to top. Turn the loose lower end of the zipper out of the way, over the seam allowance. Stitch as close as possible to the last stitches of the zipper seams. Trim away excess zipper and bind the end with a scrap of fabric.