

132 Cape

Sizes 36, 38, 40, 42, 44

Back length approx. 85 cm (33 1/2 ins)

Materials

Brushed wool fabric,
width: 150 cm (59 ins)
length: 1.90 – 1.90 – 1.95 – 2.00 – 2.00 m
(2 1/8 – 2 1/8 – 2 1/4 – 2 1/4 – 2 1/4 yds).

Lining,
width: 140 cm (55 ins)
length: 1.25 – 1.30 – 1.35 – 1.40 – 1.45 m
(1 1/2 – 1 1/2 – 1 5/8 – 1 5/8 – 1 3/4 yds).

Vilene/Pellon G 785.

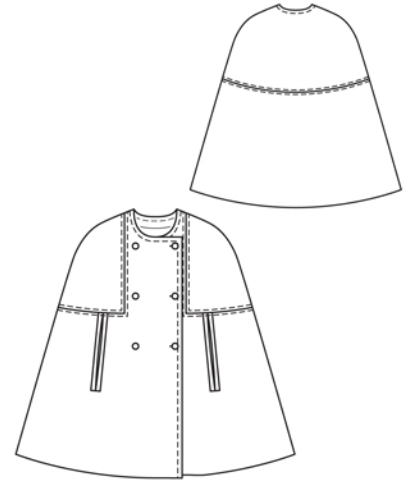
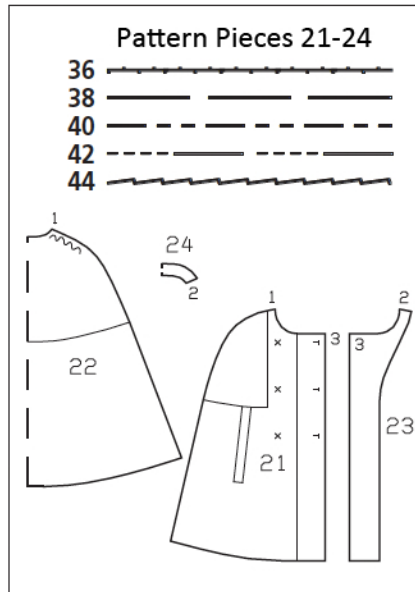
6 buttons and 1 flat inside button.

Recommended fabrics: Wools or blends.

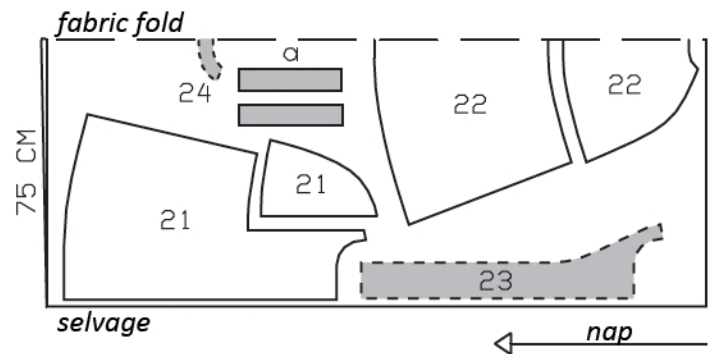
Preparations

Print the pattern out on letter or A4 sized paper. It is **very important** to not scale or fit any of the pages, you must print the document in **actual size**. Your pattern will print on multiple pages, which you will then tile together. Arrange the sheets on a large, hard and flat surface matching up the numbers and letters (i.e. 6A to 6A). Cut or fold one of the sides and match the edge to it's corresponding side. Then, tape down in place so paper is secure.

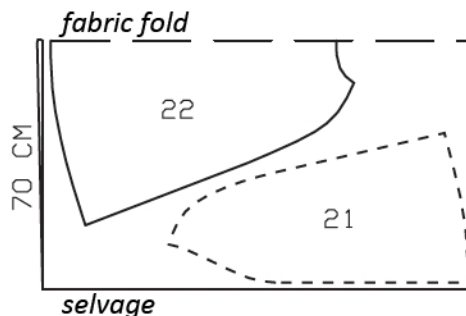
Trace the pattern pieces from the pattern sheet following the lines and markings for the correct size and the correct style (132). This pattern also includes pattern pieces, lines and markings for style 131 that should be ignored. Cut pieces 21 and 22 apart on the marked seam lines = front and front yoke, upper and lower back. The joining lines for the binding on piece 21 are marked in full on the pattern for size 36 only. For the other sizes, complete these lines accordingly. The buttonholes and button markings on piece 21 are for size 36. For sizes 38 – 44, mark the top buttonhole the same distance from neck edge as for size 36. The bottom buttonhole is the same for all sizes. Centre the other buttonhole exactly in between. Remark the buttons to match.



Wool, 150cm wide



Lining, 140cm wide



Cut from a double layer of fabric, right side facing in. Note direction of nap on fabric with a brushed surface. Use indicated fabric widths.

burda style magazine patterns do not have seam allowance included.

To be added:

Seams and edges 1.5 cm (5/8 in),
hem 4 cm (1 5/8 ins), lining 1.5 cm (5/8 in).

Cutting Out

Wool fabric:

| | |
|---------------------------|----|
| 21 front | 2x |
| 21 front yoke | 2x |
| 22 upper back, on a fold | 1x |
| 22 lower back, on a fold | 1x |
| 23 front facing | 2x |
| 24 back facing, on a fold | 1x |

Draft the following piece NOT included in the pattern:

a) 4 binding strips, 29 cm (11 1/2 ins) long, 6 cm (2 3/8 ins) wide (incl. allowances).

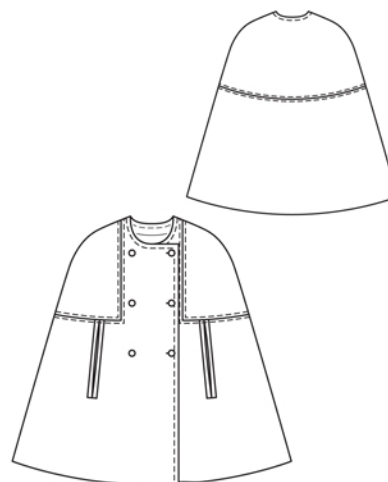
Lining: pieces 21 and 22 minus width of facing.

Interfacing: See shaded area on pattern layout.

Sewing

Sew bound arm opening edges on fronts: Mark abutting lines for binding 1.5 cm (5/8 in) from binding joining lines (= finished width of binding). Hand baste along these lines to make them visible on right side of fabric. Fold binding strips lengthwise, right side facing out and press. Baste each folded binding strip to front so that fold edge of binding meets placement line. Stitch binding in place along binding attachment lines. Slash between lines of stitching and clip diagonally toward bottom end of each seam, but do not into binding strips. Turn binding into openings and press. Lay fold edges of binding together and baste with herringbone stitch. Fold small triangle of fabric at bottom end of each opening to inside and stitch to binding, from seam end to seam end.

Stitch front yokes to fronts, from upper edges to corner. Clip seam allowances of fronts into corners. Stitch yokes in place, from corner to side seam edge. Clip seam allowance of each front close to stitching, 1 cm (3/8 in) from binding joining seam. Press seam allowances onto yoke, between each clip and end of binding. Press remaining seam allowances open. Topstitch 1 cm (3/8 in) to each side of seam.



Stitch upper back to lower back. Press seam allowances open. Topstitch to each side of seam.

Stitch shoulder seams and side seams as continuous seams. Stitch facing seams.

Stitch facing right sides together with front and neck edges. Trim seam allowances, trimming corners diagonally. Clip curves several times. Turn facing to inside and press edges. Unfold facings at hem edge. Press hem allowance to inside but do not yet sew in place.

Stitch seams of lining.

Sew lining to cape, hem cape: Stitch lining to inside facing edges, turning hem allowances of facings down to do so. Lay lining inside cape, with wrong sides facing. Turn hem allowance to inside and sew in place by hand. Turn lining edge under along lower cape edge and press fold edge lightly. Push upward in a shallow curve and pin to hem allowance. Sew facings and lining in place. Turn extra length of lining down and press lightly.

Pin lining around each arm opening. Clip lining between bindings, up to 1 cm (3/8 in) before top and bottom end of arm opening, then clip diagonally toward ends of binding attachment seams. Turn lining edges under and sew to binding attachment seams and to ends of arm openings, by hand.

Topstitch 1 cm (3/8 in) from front and neck edges.

Work buttonholes in right front. Work top buttonhole in left front, for inside button.