

111C Skirt

Sizes 34, 36, 38, 40, 42, 44

Skirt length 62 cm (24 1/2 ins)

Upper skirt edge sits 2 cm (3/4 in) below waist

Materials

Wool crêpe,

width: 150 cm (59 ins)

length: 0.80 m (7/8 yd) for all sizes

Lining,

width: 140 cm (55 ins)

length: 0.70 m (7/8 yd) for all sizes

Vilene/Pellon G 785.

Invisible zipper, 22 cm (9 ins) long

Recommended fabrics: Skirt fabrics.

Preparations

Print the pattern out on letter or A4 sized paper. It is **very** important to not scale or fit any of the pages, you must print the document in **actual size**. Your pattern will print on multiple pages, which you will then tile together. Arrange the sheets on a large, hard and flat surface matching up the numbers and letters (i.e. 6A to 6A). Cut or fold one of the sides and match the edge to it's corresponding side. Then, tape down in place so paper is secure.

Trace the pattern pieces from the pattern sheet following the lines and markings for the correct size and the correct style (111C). This pattern also includes pattern pieces, lines and markings for style 112 that should be ignored.

Note different lines for right and left back vent edges but cut the skirt panels the same size initially from the double layer of fabric.

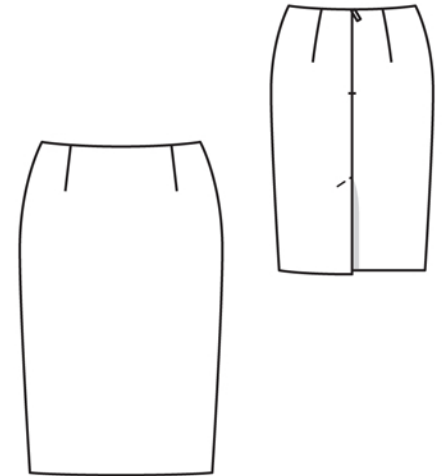
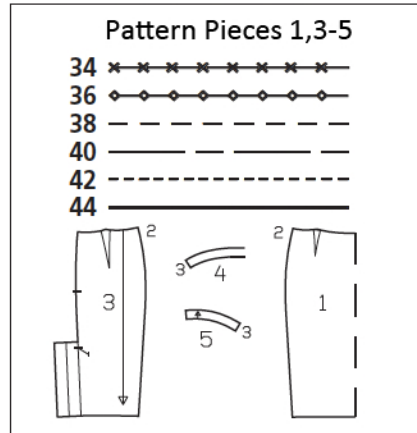
burda style magazine patterns do not have seam allowance included.

To be added:

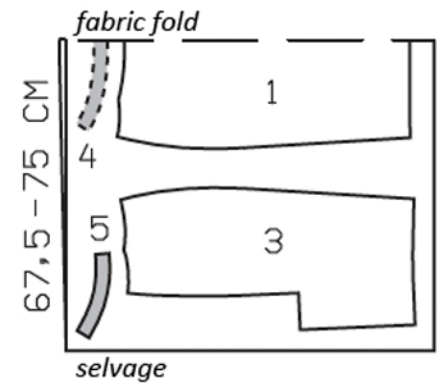
Seams and edges 1.5 cm (5/8 in),

hem 4 cm (1 5/8 ins), lining 1.5 cm

(5/8 in).



Cut pieces from a double layer of fabric, right side facing in. Use fabric with a width of 150cm



Cutting Out

1 front skirt panel, on a fold	1x
3 back skirt panel	2x
4 front facing, on a fold	1x
5 back facing	2x

Lining: piece 1 and piece 3 without vent facing.

Interfacing: Iron to facing pieces.

Sewing

Stitch front and back darts. Press darts toward centres.

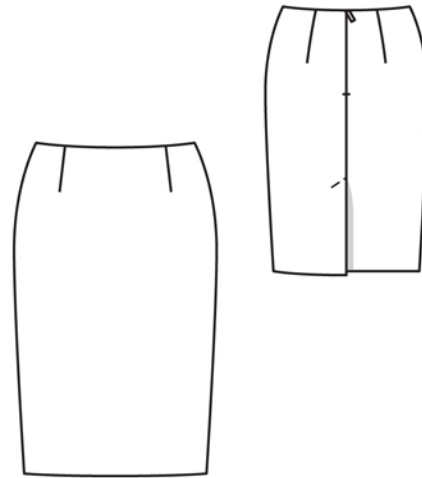
Sew invisible zip to back skirt panels, see the "Helpful Hint" on page next page. Stitch centre back seam from vent to zip slit, right sides together. Press centre back seam allowances open. Press vent facing of left skirt panel to inside. Turn vent facing of right skirt panel onto left skirt panel. Above vent, turn under seam allowance of right skirt panel and press, tapering as you go, to avoid the need to clip the allowance. On left vent edge, trim facing to a width of 5 cm (2 ins).

Stitch the side seams on the skirt and the facing, right sides together. Press the seam allowances open.

On lining, stitch darts and centre back seam. Stitch side seams of lining, leaving slits open, for zip and vent. Baste facing to upper edge of skirt lining, with wrong side facing right side, and stitch lower facing edge in place.

Face upper skirt edge: Pull lining and facing over skirt, right sides together. Pin facing to upper skirt edge. At zip slit, turn facing ends back, approx. 5 mm (3/16 in) before slit edge, and pin to upper edge. Turn allowances at slit edges of skirt to outside and pin to upper skirt edge, over facing. Stitch along upper skirt edge. Turn allowances at slit edges to inside. Turn facing and lining up. Stitch facing to seam allowances, as far as possible, close to seam. Turn facing and lining to inside and sew to zip tapes.

At vent, turn left facing back again. Press hem allowance to inside and sew in place by hand. Press self-facings of vent to inside and sew in place, over hem. Topstitch left back skirt panel at an angle, as marked, catching the underlap.



Hem lining. It should be approx. 2 cm (3/4 in) shorter than skirt. At vent, sew lining to inside edge of underlap facing. Cut a rectangle from other lining edge, to 1 cm (3/8 in) before fold edge of vent underlap and at the top to 1 cm (3/8 in) before top of vent. Clip approx. 1 cm (3/8 in) diagonally into corner. Turn lining edge under and sew to inside edge of vent facing and to underlap.



These special zippers come in various lengths. The zipper should be at least 2 cm (3/4 in) longer than the slit. It is sewn in place before the seam below the slit is stitched. A special presser foot is required to sew the zipper in place.

Sewing the zipper in place:

Open the zipper and push the coil back with your thumbnail to reveal the seam marking between the tape and the coil. Place the open zipper right side down on the right fabric side of one slit edge.

In order to stitch the zipper in place exactly along the marked seam line, you must first calculate the distance between the tape edge and the fabric edge as follows: width of seam allowance minus 1 cm (3/8 in) tape width = distance from edge of fabric. This will yield a value of 5 mm (3/16 in) if the width of the seam allowance is 1.5 cm (5/8 in).

Pin the top end of the zipper tape in place, the calculated distance from the edge of the fabric. The bottom end of the zipper will extend past the marked end of the slit. Place the presser foot on the zipper so that the coil is in the notch to the right of the needle (1). Stitch zipper in place, from the top to the marked end of the slit. Close zipper.

Place the other zipper tape face down on the opposite slit edge and pin in place at the top. Open zipper again. Place the presser foot on the top end of the zipper so that the coil is in the notch to the left of the needle (2). Sew the zipper in place, from the top to the end of the slit. Close zipper.

Now stitch the seam below the zipper, from bottom to top. Turn the loose lower end of the zipper out of the way, over the seam allowance. Stitch as close as possible to the last stitches of the zipper seams. Trim away excess zipper and bind the end with a scrap of fabric.