

113 Top

Sizes 34, 36, 38, 40, 42

Length from waist at centre front: 22 cm
at centre back: 35 cm (13 3/4 ins)

Materials

Wool crêpe,

width: 150 cm (59 ins)

length: 1.20 – 1.20 – 1.25 – 1.30 – 1.30 m
(1 3/8 – 1 3/8 – 1 1/2 – 1 1/2 – 1 1/2 yds).

Lining,

width: 140 cm (55 ins)

length: 0.30 m (3/8 yd) for all sizes.

Vilene/Pellon G 785.

Invisible zip, 60 cm (24 ins) long

Recommended fabrics: Lightweight wools or blends.

Preparations

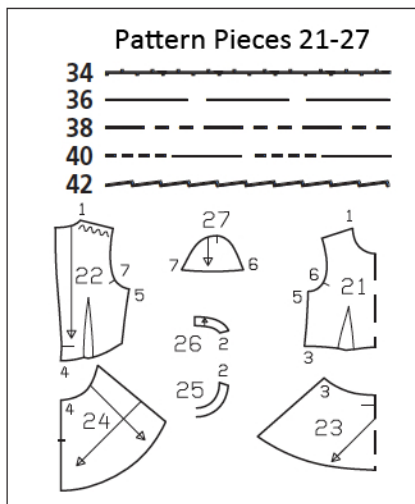
Print the pattern out on letter or A4 sized paper. It is **very important** to not scale or fit any of the pages, you must print the document in **actual size**. Your pattern will print on multiple pages, which you will then tile together. Arrange the sheets on a large, hard and flat surface matching up the numbers and letters (i.e. 6A to 6A). Cut or fold one of the sides and match the edge to it's corresponding side. Then, tape down in place so paper is secure.

Trace the pattern pieces from the pattern sheet following the lines and markings for the correct size and the correct style (113). This pattern also includes pattern pieces, lines and markings for style 114 & 115 that should be ignored.

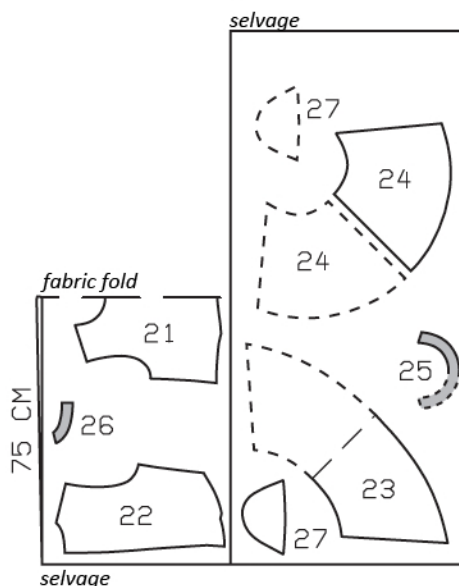
burda style magazine patterns do not have seam allowance included.

To be added:

Seams and edges 1.5 cm (5/8 in),
hem 3 cm (1 1/4 ins).

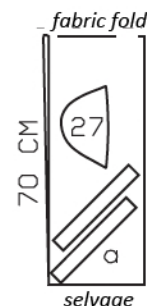


Wool Crêpe, 150cm wide



Fold the fabric as shown in the pattern layout. Right side faces in on a double layer of fabric. Right side faces up on a single layer of fabric. Cut right and left pieces as opposites.

Lining, 140cm wide



Cutting Out

Wool crêpe:

21 front, on a fold	1x
22 back	2x
23 front peplum, on a fold	1x
24 back peplum	2x
25 front neck facing, on a fold	1x
26 back neck facing	2x
27 sleeve	2x

Interfacing: See shaded area on pattern layout. Also iron strips of interfacing, approx. 2 cm (3/4 in) wide, to wrong sides of zip slit edges.

Lining: piece 27.

Draft the following piece **NOT** included in the pattern:

a) 2 bias strips for armholes, each a total of 47 – 48 – 50 – 52 – 53 cm (18 1/2 – 19 – 19 3/4 – 20 1/2 – 21 ins) long, and 4 cm (1 5/8 ins) wide (incl. allow-ances).

Sewing

Stitch front darts. Lay centre of each dart fold over seam and press from wide end toward point. Stitch back darts and press toward centre back.

Stitch peplum pieces to front and back pieces. Press seam allowances down.

Sew invisible zip to back slit edges, see the "Helpful Hint" on next page. Stitch centre back seam from lower edge to zipper. Press seam allowances open.

Stitch side seams, shoulder seams, and facing seams right sides together.

Neck edge: Pin facing right sides together with neck edge. At zip slit, turn facing back, approx. 5 mm (3/16 in) before slit edge, and pin to neck edge. Turn slit allowances to outside and pin to neck edge, over facing. Stitch along neck edge. Turn allowances on slit edges to inside. Turn facing up and stitch to seam allowances, as far as possible, close to seam. Turn facing to inside and sew to zip tapes and to shoulder seams.

Lay sleeve pieces of main fabric and lining together, right sides facing. Stitch lower edges together. Turn lining down and stitch to seam allowances, close to seam. Turn lining to inside. Baste open sleeve edges together.

Stitch sleeves to front and back, above seam marks (seam numbers 6 and 7).

Fold bias strips for armholes in half lengthwise, right side facing out, and press. Turn in one end of each strip. Pin each folded bias strip to armhole edge (catching sleeve) so that fold edge of strip lies on garment piece, 1 cm (3/8 in) past seam line, and open end of strip lies over turned-under end. Stitch along marked armhole edges. Trim seam allowances. Turn bias strips to inside and press. Sew bias strips to shoulder seams. Below sleeves, topstitch 7 mm (1/4 in) from armhole edges and stitching horizontally to lower sleeve edges.

Press hem allowance to inside and sew in place by hand.





These special zippers come in various lengths. The zipper should be at least 2 cm (3/4 in) longer than the slit. It is sewn in place before the seam below the slit is stitched. A special presser foot is required to sew the zipper in place.

Sewing the zipper in place:

Open the zipper and push the coil back with your thumbnail to reveal the seam marking between the tape and the coil. Place the open zipper right side down on the right fabric side of one slit edge.

In order to stitch the zipper in place exactly along the marked seam line, you must first calculate the distance between the tape edge and the fabric edge as follows: width of seam allowance minus 1 cm (3/8 in) tape width = distance from edge of fabric. This will yield a value of 5 mm (3/16 in) if the width of the seam allowance is 1.5 cm (5/8 in).

Pin the top end of the zipper tape in place, the calculated distance from the edge of the fabric. The bottom end of the zipper will extend past the marked end of the slit. Place the presser foot on the zipper so that the coil is in the notch to the right of the needle (1). Stitch zipper in place, from the top to the marked end of the slit. Close zipper.

Place the other zipper tape face down on the opposite slit edge and pin in place at the top. Open zipper again. Place the presser foot on the top end of the zipper so that the coil is in the notch to the left of the needle (2). Sew the zipper in place, from the top to the end of the slit. Close zipper.

Now stitch the seam below the zipper, from bottom to top. Turn the loose lower end of the zipper out of the way, over the seam allowance. Stitch as close as possible to the last stitches of the zipper seams. Trim away excess zipper and bind the end with a scrap of fabric.