

129A, B Trousers

Sizes 36, 38, 40, 42, 44

Side length with waistband 104 cm (41 ins)

Waistband edge is 1.5 cm (5/8 in) below waist

Hem circumference 37 cm (14 1/2 ins)

Materials

Wool flannel,

width: 150 cm (59 ins)

length: 1.60 – 1.60 – 1.60 – 1.65 – 1.65 m

(1 3/4 – 1 3/4 – 1 3/4 – 1 7/8 – 1 7/8 yds).

Vilene/Pellon G 785.

1 zipper, 10 – 10 – 10 – 12 – 12 cm long.

1 hammer-on hook fastener and 1 flat inside button.

Recommended fabrics: Trousers fabrics of wool or blends.

Preparations

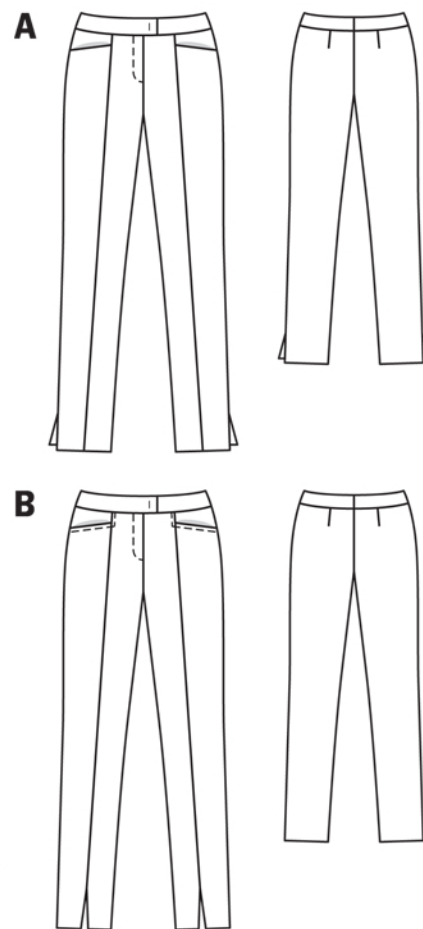
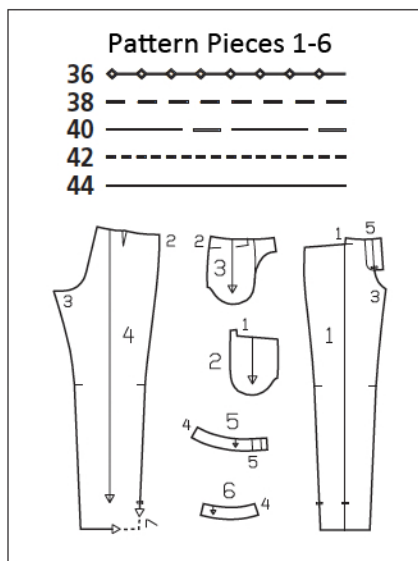
Print the pattern out on letter or A4 sized paper.

It is **very important** to not scale or fit any of the pages, you must print the document in **actual size**. Your pattern will print on multiple pages, which you will then tile together. Arrange the sheets on a large, hard and flat surface matching up the numbers and letters (i.e. 6A to 6A). Cut or fold one of the sides and match the edge to it's corresponding side. Then, tape down in place so paper is secure.

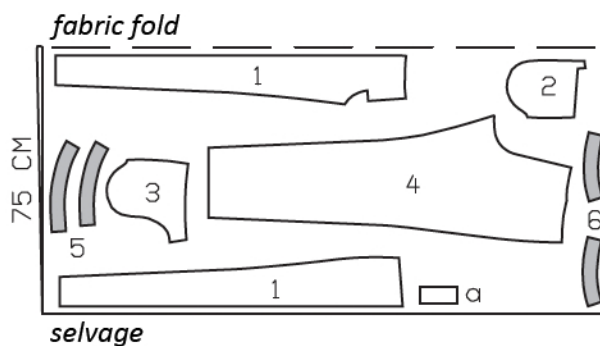
Trace the pattern pieces from the pattern sheet following the lines and markings for your size and wanted style (129 A or B).

Cut piece 1 apart on the marked seam line = centre and side front trouser pieces. Note different lines for right and left front edges of front waistband piece.

The stitching line at the zip slit is marked for size 36. For sizes 38 – 44, mark the stitching line the same distance from centre front as for size 36, noting length of slit.



Cut pieces from a double layer of fabric, right side facing in. Use fabric with a width of 150cm.



Draft the following piece NOT included in the pattern:

a) left underlap piece, 11 – 11 – 11 – 13 – 13 cm (4 3/8 – 4 3/8 – 4 3/8 – 5 1/4 – 5 1/4 ins) long, 5 cm (2 ins) wide, finished width 2.5 cm (1 in).

Cutting Out

1 centre front trouser piece	2x
1 side front trouser piece	2x
2 pocket piece	2x
3 side hip yoke with integrated pocket piece	2x
4 back trouser piece	2x
5 front waistband	4x
6 back waistband	4x
a) left underlap piece	2x

Interfacing: Iron to wrong side of waistband pieces.

burda style magazine patterns do not have seam allowance included.

To be added:

Seams and edges 1.5 cm (5/8 in), hem vents 2 cm (3/4 in), hem 4 cm (1 5/8 ins).

Sewing

View A

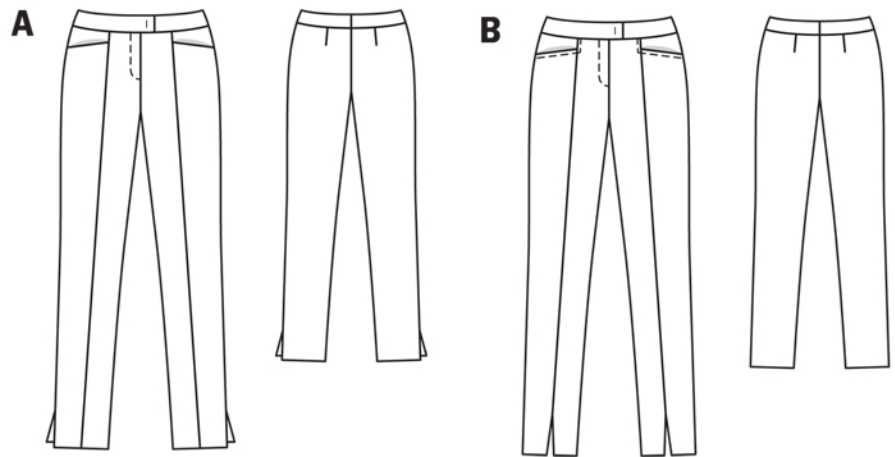
Stitch back darts and press toward centre back. Stitch each centre front piece to side front pieces, below marking. Press seam allowances open.

Hip yoke pockets: Stitch pocket pieces right sides together with pocket opening edges of side front pieces, from side edge to corner. Turn seam allowance of centre front pieces toward pocket opening again and stitch pocket pieces to centre front pieces, from upper edges to corner. Clip seam allowance of pocket pieces into corners. Turn pocket pieces up and stitch to seam allowances, close to seam. Turn pocket pieces to inside. Press edges. Pin pocket opening edges to side hip yokes, at placement lines. Stitch edges of pocket pieces together. Baste pocket pieces to wrong side of front trouser pieces, first trimming away allowance of right pocket piece at centre front.

Stitch side seams, leaving slits open at bottom. Stitch inside leg seams. Stitch centre front seam from slit mark to inside leg seam.

Zip slit: Press self-facings on slit edges to inside. Stitch along centre front on right end and 5 mm (3/16) before centre front on left end. Stitch zip under left slit edge (underlap), stitching close to zip teeth. Pin slit closed, matching centre fronts. Stitch loose zip tape to right facing, not catching front piece. Baste facing in place. Topstitch slit as marked, from upper edge to 3 cm (1 1/4 ins) above end. Fold underlap piece lengthwise, right side facing in. Stitch across bottom end. Turn right side out. Lay underlap under left slit edge and pin to facing. Stitch facing to underlap, close to zip attachment seam. Lay slit closed again and topstitch to the end, catching underlap.

Waistband and centre back seam: Stitch side seams of waistband units. Press seam allowances open. Stitch outer waistband to upper trouser edges, leaving right waistband end extending at centre front and stitching left waistband end to underlap of slit edge.



Press seam allowances of joining seams onto waistband pieces. Lay inside waistband unit right sides together with attached waistband unit and stitch upper edges together. Turn inside waistband unit up. Press seam allowances open. Stitch centre back seam. Press seam allowances open, from upper edges to beginning of crockch curve. Do not press allowances flat along curve. Attach trouser hook to inside waistband, 1 cm (3/8 in) from right waistband end. Lay inside waistband right sides together with outer waistband again and pin front edges together. On left front end, turn allowance on inside edge of waistband up. On lower overlap edge, turn seam allowances down again. Stitch along lower overlap edge and across front waistband ends. Trim seam allowances, trimming corners diagonally. Turn waistband right side out. Turn inside waistband edge under, approx. 4 cm (15/8 ins) long, and baste in place, then lay remaining edge flat over attachment seam. Work from right side to stitch along attachment seam, catching inside waistband edge. In left waistband end, work a buttonhole for inside button. Attach bar of trouser fastener to waistband, to match hook. Approx. 1 cm (3/8 in) behind hook, stitch across waistband, 1 cm (3/8 in) long.

Press hem allowances to inside and sew in place by hand. Then press allowances on slit edges to inside and sew in place.

View B

Stitch back darts and press toward centre back.

Stitch centre front pieces to side front pieces below markings, leaving slit open at bottom. Press seam allowances open.

Hip yoke pockets, see view A. Topstitch 7 mm (1/4 in) from pocket opening edges.

Stitch side seams and inside leg seams. Stitch centre front seam from slit mark to inside leg seam. Zip slit, see style A.

Waistband and centre back seam, see view A. Topstitch waistband close to all edges.

Press hem allowances to inside and sew in place by hand. Then press allowances on slit edges to inside and sew in place.

Fold each trouser front along the seam, wrong side facing in. Topstitch close to fold (seam) like a pin tuck, at the top stitching as close to pocket opening as possible.