

137 Jacket

Sizes 36, 38, 40, 42, 44

Back length approx. 70 cm (28 ins)

Materials

Wool flannel,
width: 150 cm (59 ins)
length: 1.60 m (1 3/4 yds) for all sizes.

Lining,
width: 140 cm (55 ins)
length: 1.40 m (1 5/8 yds).

Vilene/Pellon G 785.

1 large sew-on snap fastener and Shoulder pads.

Recommended fabrics: Jacket fabrics of wool or blends.

Preparations

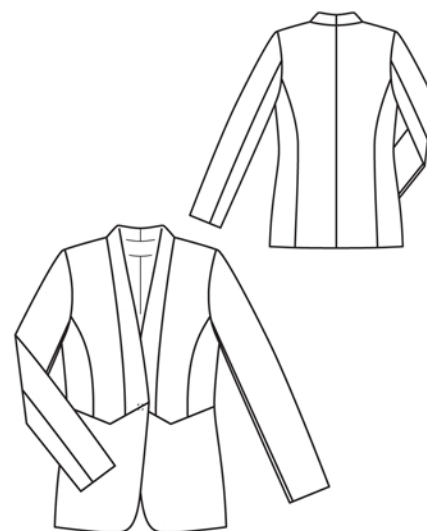
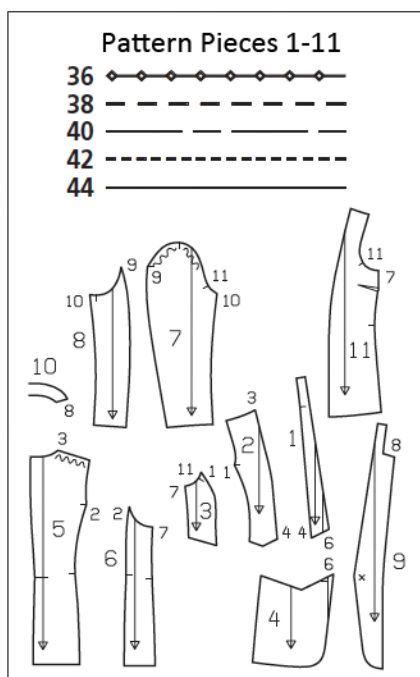
Print the pattern out on letter or A4 sized paper. It is **very important** to not scale or fit any of the pages, you must print the document in **actual size**. Your pattern will print on multiple pages, which you will then tile together. Arrange the sheets on a large, hard and flat surface matching up the numbers and letters (i.e. 6A to 6A). Cut or fold one of the sides and match the edge to it's corresponding side. Then, tape down in place so paper is secure.

Trace the pattern pieces from the pattern sheet following the lines and markings for the correct size and the correct style (137). This pattern also includes pattern pieces, lines and markings for style 136 that should be ignored.

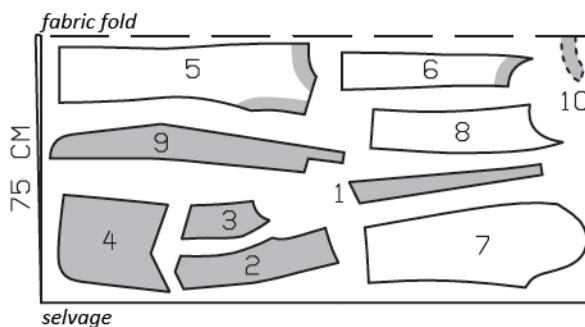
burda style magazine patterns do not have seam allowance included.

To be added:

Seams and edges 1.5 cm (5/8 in),
hem and sleeve hems 4 cm (1 5/8 ins),
lining 1.5 cm (5/8 in).

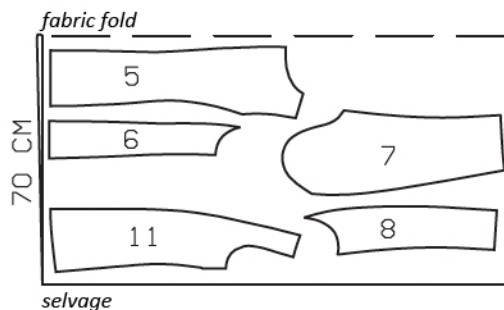


Wool Flannel, 150cm wide



Cut from a double layer of fabric, right side facing in. Use the indicated fabric widths.

Lining, 140cm wide



Lining:

11 front lining 2x
piece 5 minus width of facing and with an ease pleat of approx. 2 cm (3/4 in) at centre back, pieces 6 to 8.

Cutting Out

Flannel:	
1 front band with collar	2x
2 upper centre front	2x
3 upper side front	2x
4 lower front	2x
5 centre back	2x
6 side back	2x
7 upper sleeve	2x
8 under sleeve	2x
9 front facing with collar	2x
10 back facing, on a fold	1x

Interfacing: See shaded area on pattern layout. Also interface hem allowances.

Sewing

Stitch upper side fronts to upper centre fronts. Stitch centre back seam, back section seams, and shoulder seams. Press seam allowances open.

On attached collar sections of front band and facing pieces, stitch centre back seam. Stitch band to the vertical edges of front pieces (seam number 4) then stitch collar to back neck edge. Clip allowances several times along curves and press open.

Stitch upper fronts and band to lower fronts, clipping seam allowance of lower fronts into corners. Press seam allowances open.

Stitch side seams, right sides together.

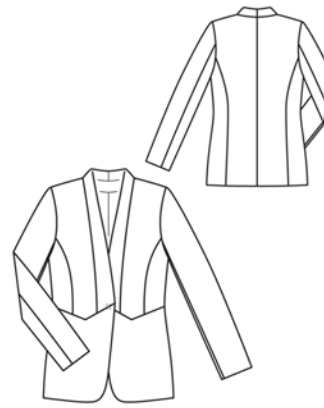
Stitch back facing to front facings (shoulder edges) and to collar, clipping seam allowances into corners. Press seam allowances open. Pin facings right sides together with fronts and pin collar edges together. Stitch along front hem edges, front edges, and collar edges. Turn facings to inside and turn collar right side out. Turn hem allowance to inside. Press edges. Sew hem in place by hand. Sew facings to hem allowance.

Stitch sleeve seams. Press sleeve hem allowances to inside and sew in place by hand.

Set in sleeves, easing sleeve caps. Sew shoulder pads in place.

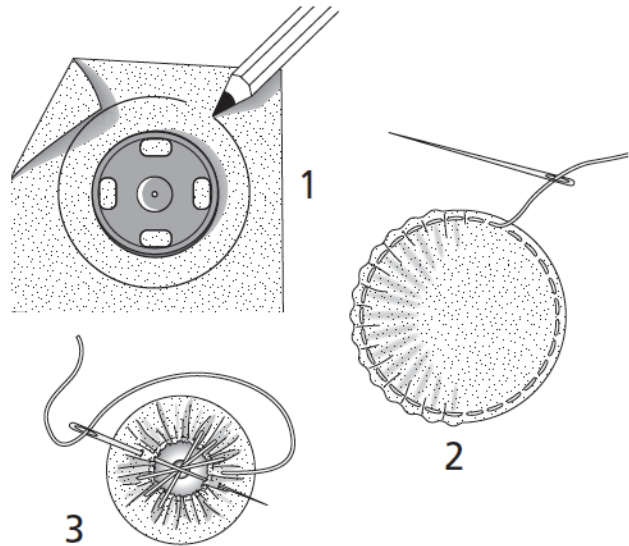
Sew lining: On lining back pieces, stitch allowances of centre seam together, 1 cm (3/8 in) from fabric edges. For the ease pleat, stitch along centre back, approx. 5 cm (2 ins), from the top down and from the bottom up, and baste pleat in between. Press pleat to one side. Stitch darts and seams of lining. Set in sleeve linings.

Sew lining in place: Stitch lining right sides together with inside facing edge, leaving approx. 8 cm (3 1/4 ins) open at bottom. Lay lining inside jacket, with wrong sides facing, pulling linings into sleeves. Pin folds, approx. 1 cm (3/8 in) deep, in lining, above sleeve hems and above hem of jacket.



Turn lining edges under and sew to hem allowances by hand. Lay extra length of lining down and press. Sew on remaining from lining edges by hand.

Cover snap fastener pieces with lining fabric, see the "Helpful Hint" below. Sew top half of snap to right front facing, as marked. Take even stitches and exit needle on right side of fabric. Lay jacket closed, matching centre fronts. Mark placement of bottom half of snap on left front. Sew bottom half of snap in place, as marked.



For each snap half, cut a small circle of lining fabric, slightly larger than the snap half (1). Sew a line of short running stitches along the edge of the lining piece (2) and do not cut thread. Lay the snap half face down on the wrong side of the lining fabric circle. Pull the thread so that the lining covers the snap smoothly. Use the thread to sew the edges of the lining together, with crisscross stitches (3). Hide the thread securely.