

101B Jacket

Sizes 36, 38, 40, 42, 44

Back length approx. 100 cm (39 1/2 ins)

Materials

Brushed wool fabric,
width: 150 cm (59 ins)
length: 2.10 – 2.10 – 2.10 – 2.45 – 2.45 m
(2 3/8 – 2 3/8 – 2 3/8 – 2 3/4 – 2 3/4 yds).

Lining,
width: 140 cm (55 ins)
length: 1.75 m (2 yds).

Seam tape for the armholes.

Vilene/Pellon G 785.

2 large sew-on snap fasteners. Shoulder pads.

A small piece of batting.

Recommended fabrics: Coat fabrics with some body.

Preparations

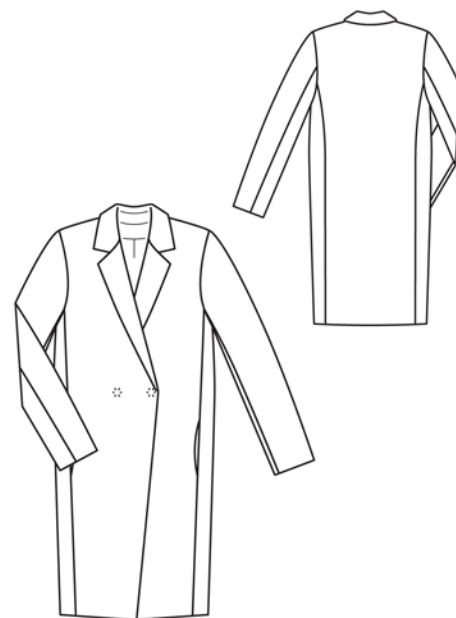
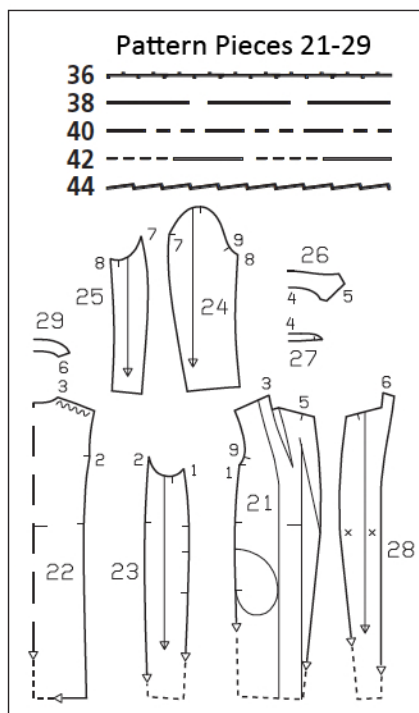
Print the pattern out on letter or A4 sized paper. It is **very important** to not scale or fit any of the pages, you must print the document in **actual size**. Your pattern will print on multiple pages, which you will then tile together. Arrange the sheets on a large, hard and flat surface matching up the numbers and letters (i.e. 6A to 6A). Cut or fold one of the sides and match the edge to it's corresponding side. Then, tape down in place so paper is secure.

Trace the pattern pieces from the pattern sheet following the lines and markings for your size. Trace the pocket piece from piece 21 as a separate pattern piece – it is the same for all sizes.

burda style magazine patterns do not have seam allowance included.

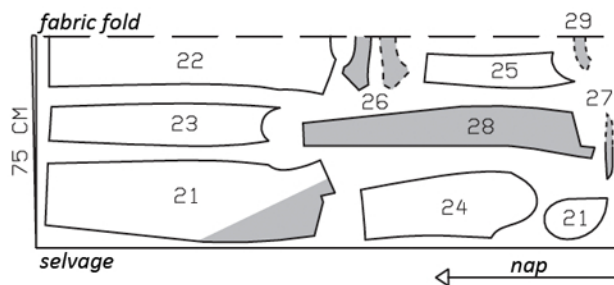
To be added:

Seams and edges 1.5 cm (5/8 in),
hem and sleeve hems 4 cm (1 5/8 ins),
lining 1.5 cm (5/8 in).

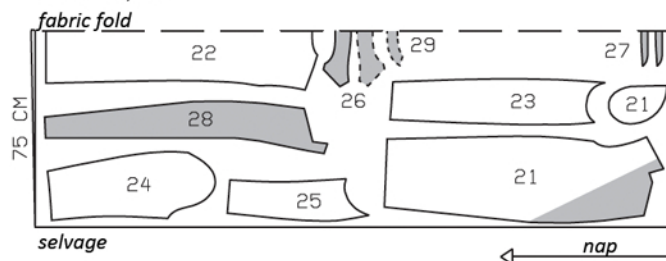


Wool, 150cm wide
Sizes 36-40

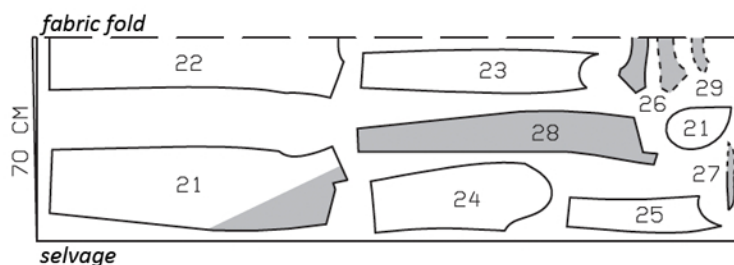
Cut from a double layer of fabric, right side facing in. Note direction of nap. Use fabric with indicated widths.



Sizes 42, 44



Lining, 140cm wide
Sizes 36-44



Cutting Out

Brushed wool	
21 front	2x
pocket piece	2x
22 back, on a fold	1x
23 side piece	2x
24 upper sleeve	2x
25 under sleeve	2x
26 collar, on a fold	2x
27 collar stand, on a fold	2x
28 front facing	2x
29 back facing, on a fold	1x

Lining: piece 21 to lining line; piece 22 minus width of facing and with an ease pleat of approx. 2 cm (3/4 in) at centre back; pieces 23 to 25; and pocket piece (piece 21).

Interfacing: See shaded area on pattern layout. Also interface hem allowances. Baste seam tape under edges of armholes.

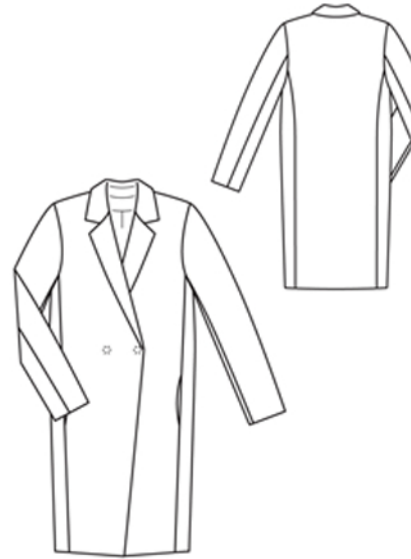
Sewing

Stitch side pieces to fronts, not stitching across pocket openings.

Inseam pockets: Pin pocket pieces to seam allowances of pocket opening edges, right sides facing, pinning pocket lining pieces to fronts and pocket pieces of main fabric to side pieces. Stitch pocket pieces in place, directly along marked seam lines. Press pocket lining pieces forward. Topstitch close to pocket opening edges. Press pocket pieces of main onto front. Trim pocket pieces even and stitch together.

Stitch side pieces to back, right sides together. Topstitch back close to seams. Stitch shoulder seams on coat and on facing.

n Notched collar: Pin facing right sides together with coat. Add a little extra fullness to corners of lapels. Stitch along front edges and edges of lapels, up to marking. Leave facing lying right sides together with coat for the time being. On fronts, cut along centres of lapel darts, approx. 10 cm (4 ins) long. Stitch collar stand pieces to collar pieces. Trim seam allowances and press



seams open. Stitch collar pieces together along outer edges, adding a little extra fullness to top collar. Turn collar right side out. Lay collar between coat and facing. First stitch under collar to neck edge of coat fronts, from each marking to dart. Press seams open. Then begin at centre back to stitch undercollar to neck edge and stitch lapel dart, as continuous seam. Press allowances of collar joining seams open, pressing darts flat. Stitch upper collar to facing, clipping seam allowances into corners. Press seam allowances open. Turn facing to inside. Pin collar joining seams together exactly. Turn back facing up and stitch seam allowances together, close to collar joining seam. Turn facing down again.

At hem edge, turn facings forward. Press hem allowance to inside, then turn back down again.

Stitch sleeve seams. Press sleeve hem allowances to inside and sew in place by hand.

Set in sleeves. In area of each sleeve cap, lay a strip of batting, approx. 5 cm (2 ins) wide, on wrong side of fabric and sew to seam allowances. Sew shoulder pads in palce.

Construct lining: On back lining piece, stitch ease pleat at top and bottom, each approx. 5 cm (2 ins) long, and baste in between. Press pleat to one side. Stitch seams of lining. Set in sleeve linings.

Line coat, hem: Stitch lining right sides together with inside facing edge. Lay lining in coat, with wrong sides facing, pulling linings into sleeves. Turn hem allowance to inside and sew in place by hand. Turn facings down again. Turn lining edge under, along hem edge. Press fold lightly, push upward in a shallow curve, and pin to hem allowance. Sew facings and lining in place. Lay extra length of lining down and press lightly. Turn edges of sleeve linings under and sew to hem allowances. Lay extra length of lining down and press.

Sewing Continued...

Cover snap fastener pieces with lining fabric. Sew top halves of snaps to right front facing as marked, taking even stitches and exiting needle on right fabric side. Lay right front on left front, matching centre fronts. Sew bottom halves of snaps to left front to match top halves.

Hint:

Cover snap fasteners with lining fabric
For each snap half, cut a small circle of lining fabric, slightly larger than the snap half (1). Sew a line of short running stitches along the edge of the lining piece (2) and do not cut thread. Lay the snap half face down on the wrong side of the lining fabric circle. Pull the thread so that the lining covers the snap smoothly. Use the thread to sew the edges of the lining together, with crisscross stitches (3). Hide the thread securely.

