

117 Waistcoat

Sizes 17, 18, 19, 20, 21

Back length approx. 45 cm (18 ins)

Materials

Viscose/rayon velvet,

width: 110 cm (44 ins)

length: 0.80 – 0.85 – 0.85 – 0.90 – 0.90 m
(7/8 – 1 – 1 – 1 – 1 yd).

Satin print,

width: 140 cm (55 ins)

length, yellow: 1.45 m (1 3/4 yds) of yellow
(inside of scarf and lining),

length, blue: 0.90 m (1 yd) of blue
(outside of scarf).

Vilene Bias Tape/ stay tape.

Recommended fabrics: Softly draping fabrics.

Preparations

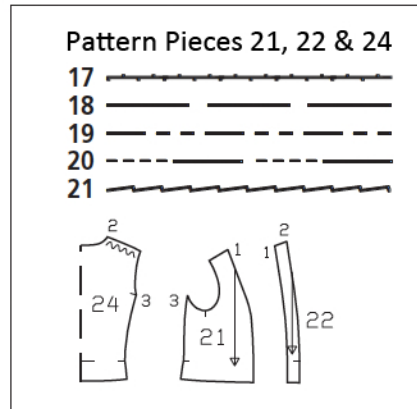
Print the pattern out on letter or A4 sized paper. It is **very** important to not scale or fit any of the pages, you must print the document in **actual size**. Your pattern will print on multiple pages, which you will then tile together. Arrange the sheets on a large, hard and flat surface matching up the numbers and letters (i.e. 6A to 6A). Cut or fold one of the sides and match the edge to it's corresponding side. Then, tape down in place so paper is secure.

Trace the pattern pieces from the pattern sheet following the lines and markings for the correct size and the correct style (117). This pattern also includes pattern pieces, lines and markings for style 118 and 119 that should be ignored.

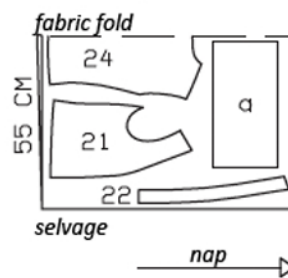
burda style magazine patterns do not have seam allowance included.

To be added:

Seams and edges 1.5 cm (5/8 in).



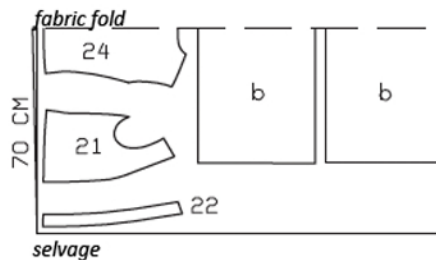
Velvet, 110cm wide



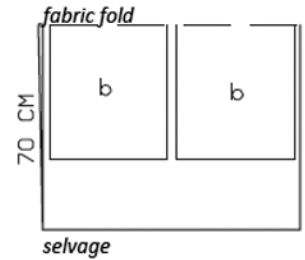
Cut from a double layer of fabric, right side facing in. Note direction of nap on velvet. Use the indicated fabric widths.

Satin Print, 140cm wide

Yellow



Blue



Cutting Out

Velvet:

21 front 2x
22 front band 2x
24 back, on a fold 1x

Draft the following pieces NOT included in the pattern:

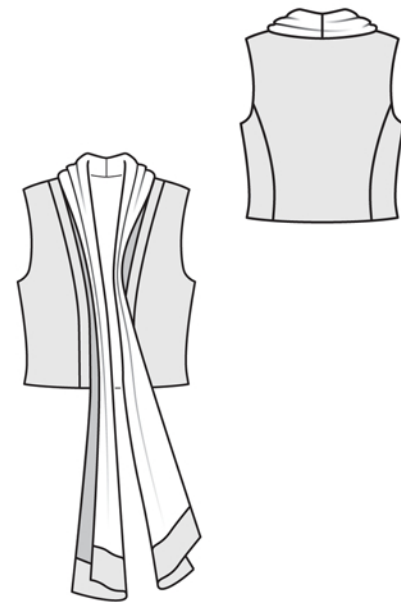
a) 2 bands for scarf ends, 40 cm (16 ins) long, 20 cm (8 ins) wide, finished width 10 cm (4 ins).

Satin (outside of scarf):

b) 2 scarf pieces, 90.5 – 92 – 93 – 94.5 – 96 cm (35 1/2 – 36 1/4 – 36 3/4 – 37 1/4 – 37 3/4 ins) long, 40 cm (16 ins) wide.

Satin (inside of scarf and lining): pieces 21, 22, and 24, and also.

Vilene Bias Tape/ stay tape: Iron to wrong sides of armhole edges.



Sewing

Stitch front bands to front pieces. Press seam allowances open. Stitch shoulder seams, right sides together.

Stitch lining pieces together as for pieces of main fabric.

Stitch lining to armhole edges, beginning and ending exactly at seam lines of back seams. Trim seam allowances. Turn lining to inside. Press armhole edges.

Stitch fronts right sides together with back (seam number 3). Stitch lining seams. Press seam allowances open. Turn hem edges of main fabric and lining up and stitch together, with right sides facing, beginning and ending exactly at marked seam line on front edge. Turn waistcoat right side out. Press edges.

Stitch scarf pieces for outer and inner sides each together (centre back seams). Stitch bands to ends of inner and outer scarf pieces. Press seam allowances open. Fold bands to a width of 10 cm (4 ins), right side facing in and lay inner and outer scarf piece together, right sides facing. Stitch along one long edge (outer edge). On inside edge, measure and mark 44 cm (17 1/4 ins) from band fold and mark. Stitch edges together, from fold to mark, then beginning at mark, taper stitching toward outer edge of allowance. Turn scarf right side out and press edges. Stitch open scarf edges together to front edges and back neck edge, not catching lining. Press seam allowances away from scarf. Turn lining edge under and sew to joining seam.

Working from outer side of garment, stitch close to scarf attachment seam, catching lining on inside.

