

120 Dress

Sizes 72, 76, 80, 84, 88

Length from waist 66 cm (26 ins)

Materials

Jacquard fabric,

width: 110 cm (44 ins)

length: 1.60 – 1.60 – 2.00 – 2.00 – 2.00 m

(1 3/4 – 1 3/4 – 2 1/4 – 2 1/4 – 2 1/4 yds).

Sequin fabric,

width: 120 cm (47 ins)

length: 0.30 m (3/8 yd) for all sizes.

Lining,

width: 140 cm (55 ins)

length: 1.25 – 1.30 – 1.30 – 1.35 – 1.35 m

(1 1/2 – 1 1/2 – 1 1/2 – 1 5/8 – 1 5/8 yds).

Vilene Bias Tape/ stay tape.

1 invisible zip, 60 cm (24 ins) long

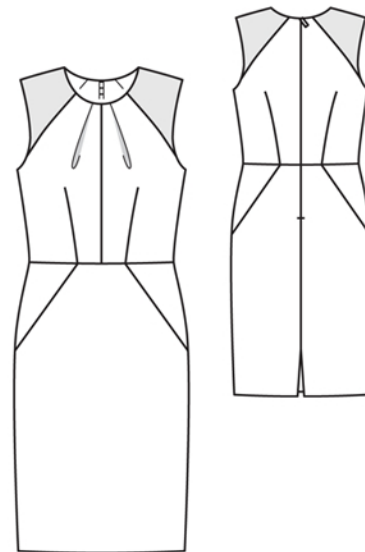
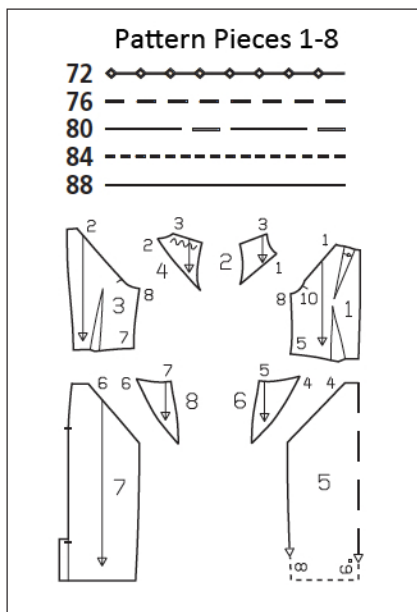
Recommended fabrics: Dress fabrics with some body.

Preparations

Print the pattern out on letter or A4 sized paper. It is very important to not scale or fit any of the pages, you must print the document in actual size. Your pattern will print on multiple pages, which you will then tile together. Arrange the sheets on a large, hard and flat surface matching up the numbers and letters (i.e. 6A to 6A). Cut or fold one of the sides and match the edge to it's corresponding side. Then, tape down in place so paper is secure.

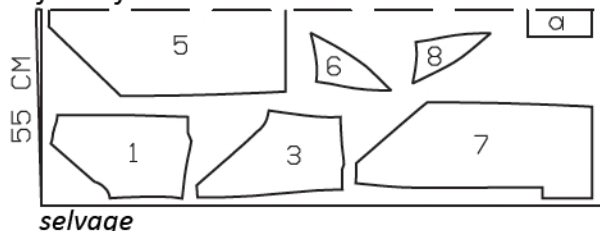
Trace the pattern pieces from the pattern sheet following the lines and markings for the correct size and the correct style (120). This pattern also includes pattern pieces, lines and markings for style 121 that should be ignored.

The upper dart on piece 1 applies for the lining only. The pleat arrow applies for the main fabric. The pleat arrow marked on the pattern is for size 72. For the other sizes, mark the pleat arrow the same distance from neck edge as for size 72.



Jacquard, 110cm wide
Sizes 72, 76

fabric fold



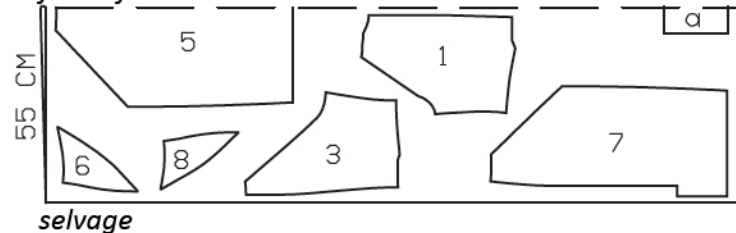
Sequin, 120cm wide
Sizes 72-88

fabric fold



Sizes 80-88

fabric fold



Cut from a double layer of fabric, right side facing in. Use indicated fabric widths.

burda style magazine patterns do not have seam allowance included.

To be added:

Seams and edges 1.5 cm (5/8 in),
hem 4 cm (15/8 ins), lining 1.5 cm (5/8 in).

Cutting Out

Jacquard:

1 front	2x
3 back	2x
5 front skirt panel, on a fold	1x
6 front skirt yoke	2x
7 back skirt panel	2x
8 back skirt yoke	2x

Draft the following piece NOT included in the pattern:

a) underlap for vent, 22 cm (8 3/4 ins) long, including 4 cm (1 5/8 ins) for hem, 15 cm (6 ins) wide, cut without allowances

Sequin fabric:

2 front shoulder yoke	2x
4 back shoulder yoke	2x

Lining: pieces 1 to 6 and 8, plus piece 7 without vent allowance.

Vilene Bias Tape/ stay tape: Iron to wrong sides of neck and armhole edges of lining pieces.

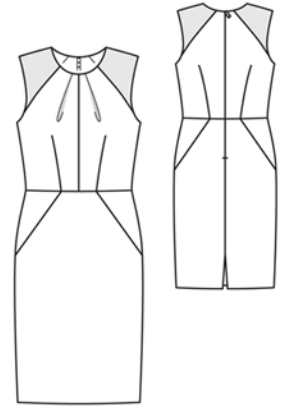
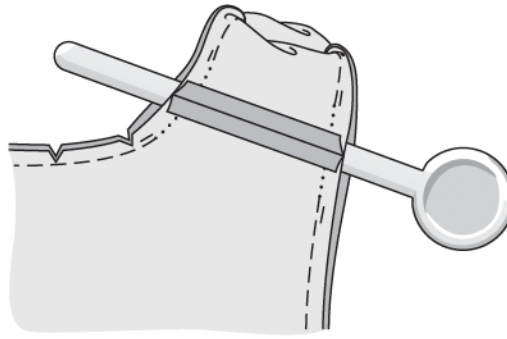
Sewing

Stitch bodice centre front seam. Press seam allowances open. Stitch front shoulder yoke pieces to bodice front and back shoulder yoke pieces to bodice backs. Press seams open. Stitch lower front and back darts. Press darts toward centre front or centre back.

Work from inside to stitch pleats in front, from neck edge to arrow markings. Lay pleats in direction of arrows and press pleat seams. Baste pleats to neck edge.

Stitch front skirt yokes to front skirt panel and back skirt yokes to back skirt panels. Stitch front skirt panel to bodice front and back skirt panels to bodice backs. Press seam allowances open.

Sew invisible zip to back slit edges, see the "Helpful Hint" on next page. Stitch centre back seam from vent to zip.



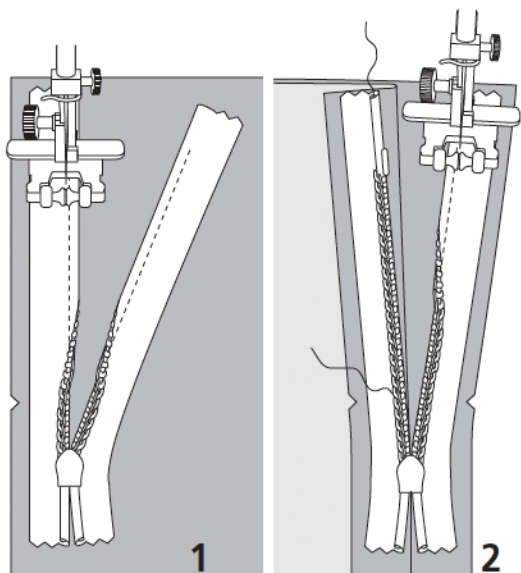
Stitch darts and seams of lining, leaving shoulder and side seams open. Stitch centre back seam from zip slit to hem edge.

Neck and armhole edges, shoulder seams: Pin lining right sides together with front and back pieces. At zip slit, turn lining back, approx. 5 mm (3/16 in) before marked seam line, and pin to neck edge. Turn allowances on slit edges of dress to outside and pin in place, over lining. Stitch along neck and armhole edges, beginning and ending 2 cm (3/4 in) below each shoulder seam line. Trim seam allowances and clip curves. Turn lining and allowances on back slit edges to inside. Stitch shoulder seams, not catching lining. Press seam allowances open. At back edges, reach between main fabric and lining to grasp and pull out edges of one shoulder. Stitch shoulder seam of lining. Press seam allowances open. This will be easier if you slip the handle of a wooden spoon under the seam (see above image). At shoulder, pull front up and out slightly more, to stitch remaining open neck and armhole edges closed. Push shoulder in place again. Pull other shoulder out, stitch lining seam, and press. Push shoulder in place again. Press neck and armhole edges.

At each armhole, turn lining up again. Stitch side seams on main fabric and lining as continuous seams, leaving a slit, 20 cm (8 ins) long in one side seam of lining, as walking slit. Press seam allowances open. Turn lining down again. Turn back lining edges under and sew to zip tapes.

Press hem allowance of dress to inside and sew in place by hand. Press allowances of back slit edges to inside and sew to hem edge. Hem lining so that it is 2 cm (3/4 in) shorter than dress. Turn allowances of side lining slit to wrong side and stitch in place.

On underlap for back vent, press hem allowance to inside and sew in place by hand. Pin underlap to lining, at centre back, with wrong sides facing, so that it extends past hem edge by 1.5 cm (5/8 in). Stitch underlap to lining.



These special zippers come in various lengths. The zipper should be at least 2 cm (3/4 in) longer than the slit. It is sewn in place before the seam below the slit is stitched. A special presser foot is required to sew the zipper in place.

Sewing the zipper in place:

Open the zipper and push the coil back with your thumbnail to reveal the seam marking between the tape and the coil. Place the open zipper right side down on the right fabric side of one slit edge.

In order to stitch the zipper in place exactly along the marked seam line, you must first calculate the distance between the tape edge and the fabric edge as follows: width of seam allowance minus 1 cm (3/8 in) tape width = distance from edge of fabric. This will yield a value of 5 mm (3/16 in) if the width of the seam allowance is 1.5 cm (5/8 in).

Pin the top end of the zipper tape in place, the calculated distance from the edge of the fabric. The bottom end of the zipper will extend past the marked end of the slit. Place the presser foot on the zipper so that the coil is in the notch to the right of the needle (1). Stitch zipper in place, from the top to the marked end of the slit. Close zipper.

Place the other zipper tape face down on the opposite slit edge and pin in place at the top. Open zipper again. Place the presser foot on the top end of the zipper so that the coil is in the notch to the left of the needle (2). Sew the zipper in place, from the top to the end of the slit. Close zipper.

Now stitch the seam below the zipper, from bottom to top. Turn the loose lower end of the zipper out of the way, over the seam allowance. Stitch as close as possible to the last stitches of the zipper seams. Trim away excess zipper and bind the end with a scrap of fabric.