

126 Jacket

Sizes 34 36, 38, 40, 42

Back length approx. 50 cm (20 ins)

Materials

Jacquard fabric,
width: 145 cm (57 ins)
length: 1.40 – 1.40 – 1.40 – 1.45 – 1.45 m
(1 5/8 – 1 5/8 – 1 5/8 – 1 3/4 – 1 3/4 yds).

Sequin fabric, as contrasting fabric
width: 110 cm (44 ins)
length: 0.30 m (3/8 yd) for all sizes.

Lining,
width: 140 cm (55 ins)
length: 1.10 – 1.10 – 1.15 – 1.20 – 1.20 m
(1 1/4 – 1 1/4 – 1 3/8 – 1 3/8 – 1 3/8 yds).

Vilene/Pellon G 785.

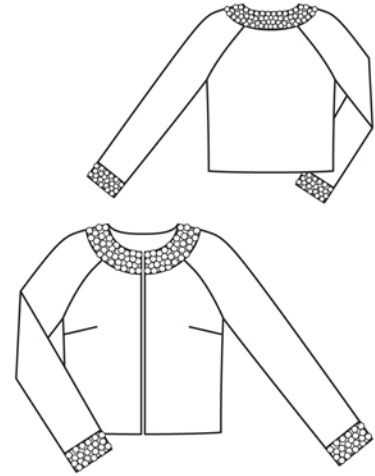
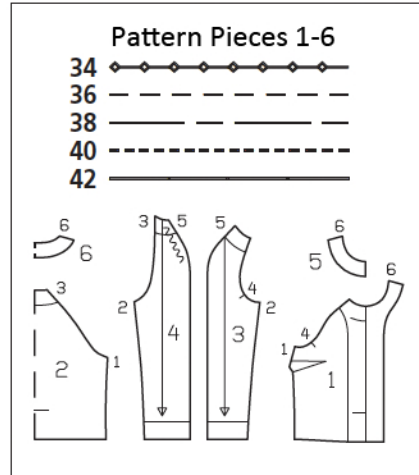
Recommended fabrics: Jacket fabrics with some body.

Preparations

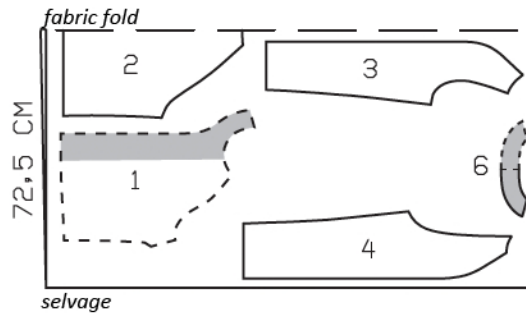
Print the pattern out on letter or A4 sized paper. It is **very** important to not scale or fit any of the pages, you must print the document in **actual size**. Your pattern will print on multiple pages, which you will then tile together. Arrange the sheets on a large, hard and flat surface matching up the numbers and letters (i.e. 6A to 6A). Cut or fold one of the sides and match the edge to it's corresponding side. Then, tape down in place so paper is secure.

Trace the pattern pieces from the pattern sheet following the lines and markings for the correct size and the correct style (126). This pattern also includes pattern pieces, lines and markings for style 127 and 128 that should be ignored.

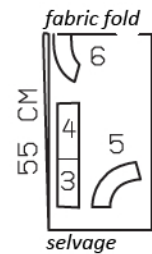
Trace the hem bands from pieces 3 and 4 each as separate pattern pieces and glue together (upper sleeve seam). The band placement line on piece 1 is marked for size 34. For the other sizes, mark this line at the same width as for size 34.



Jacquard, 145cm wide



Sequin, 110cm wide



Cut from a double layer of fabric, right side facing in. Use the indicated fabric widths.

Cutting Out

Jacquard fabric:

1 front	2x
2 back, on a fold	1x
3 front sleeve	2x
4 back sleeve	2x
6 back neck facing, on a fold	1x

Sequin fabric (contrasting fabric):

3 + 4 sleeve band	2x
5 front neck band	2x
6 back neck band, on a fold	1x

Lining: pieces 1, 3, and 4 to lining line; piece 2 to lining line and with an ease pleat of approx. 2 cm (3/4 in) at centre back.

Interfacing: See shaded area on pattern layout.

burda style magazine patterns do not have seam allowance included.

To be added:
Seams and edges 1.5 cm (5/8 in),
hem and sleeve hems 4 cm (15/8 ins),
lining 1.5 cm (5/8 in).

Sewing

Stitch bust darts in front jacket and press darts downward.

Stitch side seams and lower sleeve seams, right sides together. Press seam allowances open. Press hem allowances to inside then turn down again.

Stitch sleeves to armhole edges. Press seam allowances open, from neck edge to beginning of underarm curve.

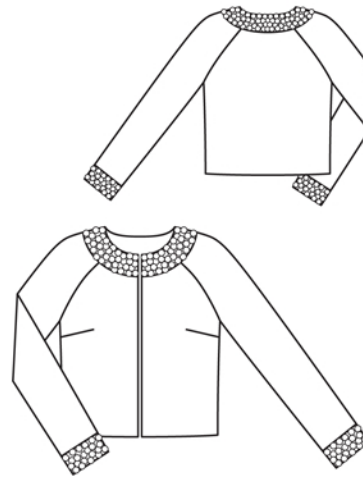
Stitch upper sleeve seams (seam number 5). Press sleeve hem allowances to inside and sew in place by hand.

Turn front self-facings to outside and stitch to back facing piece. Pin facing to neck edge. Stitch along neck edge. Trim seam allowances, trimming diagonally across front corners. Turn facing to inside and press edges.

On lining back, stitch ease pleat at top and bottom, each approx. 5 cm (2 ins) long, and baste in between. Press pleat to one side. Stitch lining seams.

Line and hem jacket: Stitch lining right sides together with inside facing edge. Lay lining in coat, with wrong sides facing, pulling linings into sleeves. Turn hem allowance to inside and sew in place by hand. Turn facings down again. Turn lining edge under, along hem edge. Press fold lightly, push upward in a shallow curve, and pin to hem allowance. Sew facings and lining in place. Lay extra length of lining down and press lightly. Turn edges of sleeve linings under and sew to hem allowances. Lay extra length of lining down and press.

Sequin fabric bands: On seam allowances of bands, carefully remove sequins. To do this, cut the sequins apart – do not cut the thread. Use your machine's one-sided edge foot (zipper foot) to stitch the shoulder seams of neck band and lower seams of sleeve hem bands.



Lay neck band on jacket along neck edge. Turn edges of band under and pin band in place. Turn edges of sleeve bands under and pin to lower sleeve edges. Hand-sew bands in place, with small stitches.