

104 Jacket

Sizes 36, 38, 40, 42, 44

Back length approx. 62 cm (24 1/2 ins)

Materials

Brushed wool, 150 cm (59 ins) wide:
 sizes 36, 38, 40: 1.30 m (1 1/2 yds);
 size 42: 1.45 m (1 3/4 yds);
 size 44: 1.50 m (1 3/4 yds).

Lining, 140 m (55 ins) wide:
 sizes 36, 38: 1.20 m (1 3/8 yds),
 sizes 40, 42, 44: 1.25 m (1 1/2 yds).

Vilene/Pellon G 785, width: 90 cm (36 ins)
 length: 0.75 m (7/8 yd).

For the sleeve embellishment:
 Black petersham ribbons, 4 cm (1 5/8 ins), 2 cm (3/4 in), and 1.5 cm (5/8 in) wide, and each approx. 1.00 m (1 1/8 yds) long.

Brown petersham ribbon, 2 cm (3/4 in) wide and approx. 2.00 m (2 1/4 yds) long.

Imitation leather band with rivets, 3 cm (1 1/4 in) wide and approx. 1.00 m (1 1/8 yds) long.

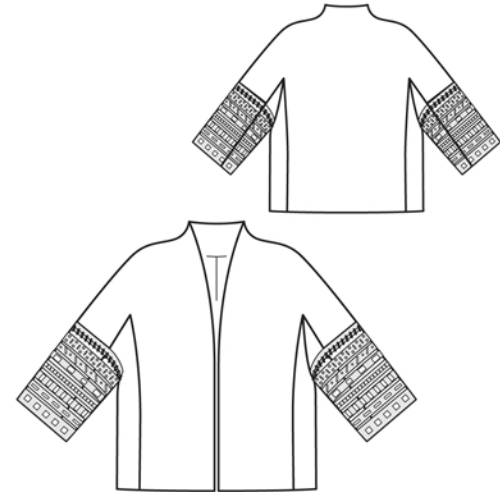
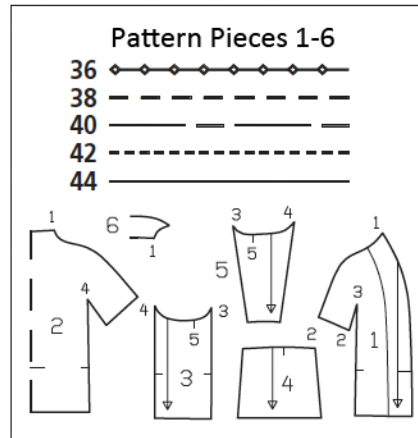
Band with metal rivets, 1.5 cm (5/8 in) wide and approx. 2.00 m (2 1/4 yds) long.

Plastic sew-on "gems":
 approx. 22 gems 2 x 2 cm (3/4 x 3/4 in),
 approx. 20 gems 1.5 cm x 0.7 cm (5/8 x 1/4 in),
 approx. 26 gems 1.8 cm x 1.2 cm (3/4 x 1/2 in),
 approx. 22 gems 2.5 cm x 1.8 cm (1 x 3/4 in).

Silver beads, approx. 24 round and 24 oval.
 Gold beads, approx. 44.

2 metal zips, 50 cm (20 ins) long.

Recommended fabrics: Jacket fabrics of wool or blends.



Preparations

Print the pattern out on letter or A4 sized paper. It is **very** important to not scale or fit any of the pages, you must print the document in **actual size**. Your pattern will print on multiple pages, which you will then tile together. Arrange the sheets on a large, hard and flat surface matching up the numbers and letters (i.e. 6A to 6A). Cut or fold one of the sides and match the edge to it's corresponding side. Then, tape down in place so paper is secure.

Trace the pattern pieces from the pattern sheet following the lines and markings for your size. Trace the facing from piece 1 as a separate pattern piece.

burda style magazine patterns do not have seam allowance included.

Seam and hem allowance to be added:

4 cm (15/8 ins) for hem and sleeve hems and 1.5 cm (5/8 in) at all other seams and edges.

Cutting Out

Wool fabric:

1 front with sleeve	2x
front facing	2x
2 back with sleeve, on a fold	1x
3 side piece	2x
4 upper sleeve piece	2x
5 lower sleeve piece	2x
6 back facing, on a fold	1x

Interfacing

See shaded area on pattern layout.

Iron interfacing to wrong sides of front and back pieces, over corners to be clipped (seam numbers 3 and 4).

Transfer pattern lines to the fabric:

Transfer pattern piece outlines (seam and hem lines) and all other pattern lines and markings, except the grain line, to the wrong fabric side with a tracing wheel and Burda dressmaker's carbon paper (see detailed instructions included with the pack).

Lining:

Prepare the pattern pieces: Cut paper pattern piece 1 on the marked facing line. Lay paper pattern piece 6 on paper pattern piece 2 and transfer the inside facing edge to piece 2 = lining line. Cut piece 2 on the lining line.

Cutting out:

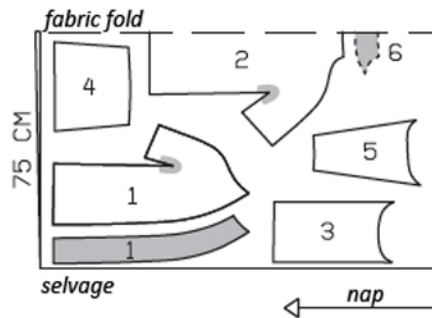
pieces 1, 3, 4, and 5 twice each; piece 2, on a fold and with an ease pleat of 2 cm (3/4 in) at centre back.

Seam and hem allowances: 1.5 cm (5/8 in).

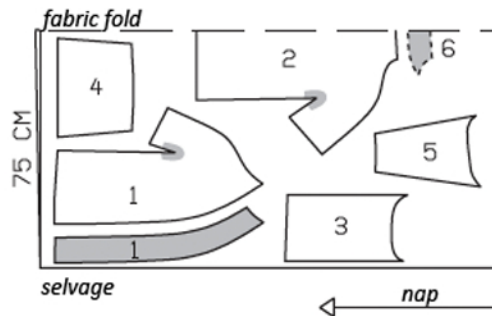
Transfer the pattern piece outlines to the lining pieces.

Iron interfacing to wrong side of front and back pieces, over each corner to be clipped (seam numbers 3 and 4).

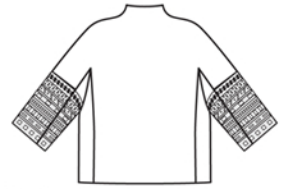
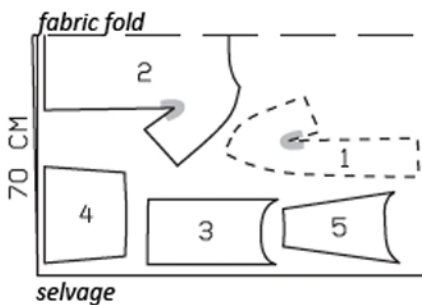
Wool, 150cm wide
Sizes 36, 38, 40



Sizes 42, 44



Lining, 140cm wide
Sizes 36-44



Sewing

Front section seams:

Cut between front and attached sleeve to approx. 4 cm (15/8 ins) before corner (image 1). Lay each side piece (piece 3) right sides together with front piece and pin section seam. Stitch, beginning at the top, exactly at point (seam number 3) (image 2). Clip front from end of cut to last stitch (image 3). Press seam allowances open.

Shoulder seams and top sleeve seams:

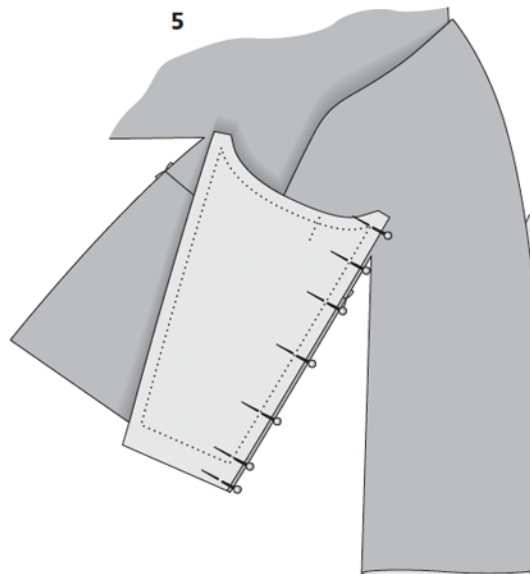
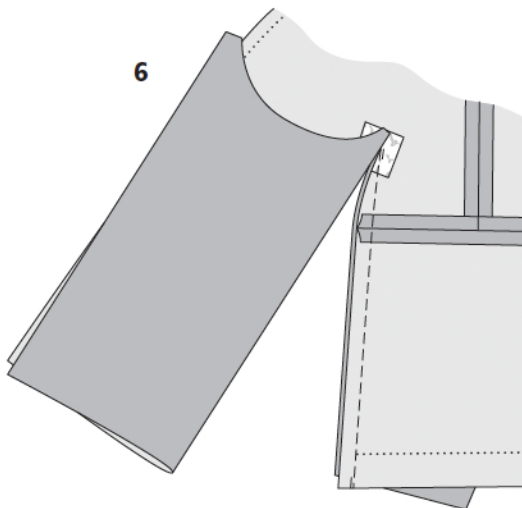
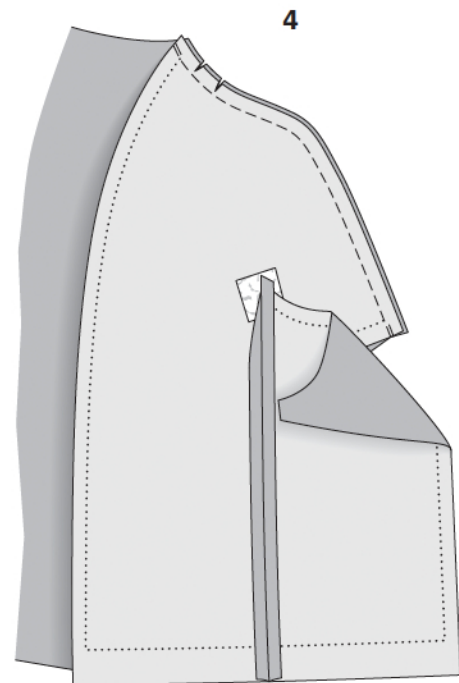
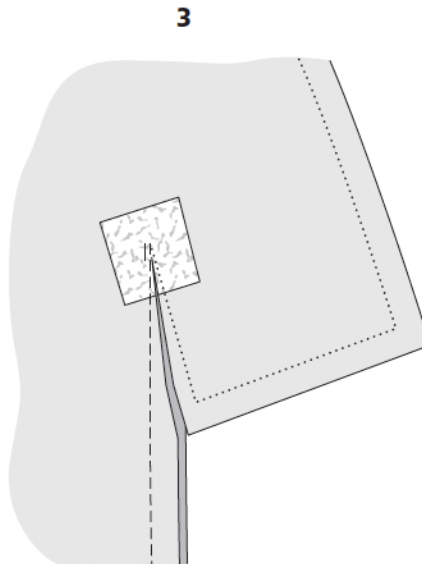
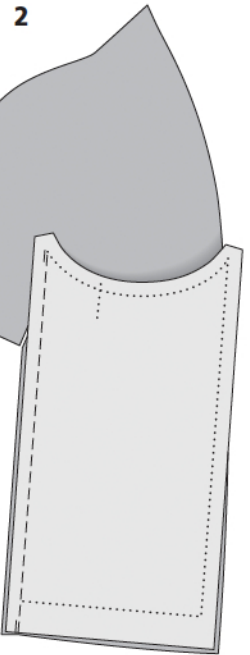
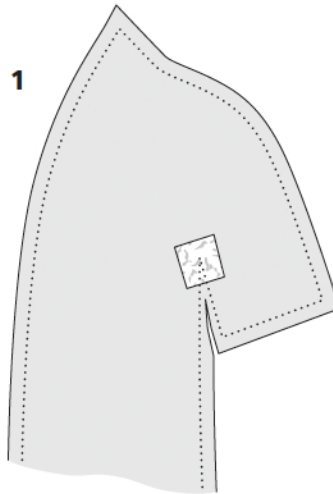
Lay fronts right sides together with back. Pin shoulder seams and top sleeve seams as continuous seams (seam number 1). Stitch (image 4). Press seam allowances open.

Attach upper sleeve pieces:

Pin each upper sleeve piece right sides together with lower edge of attached sleeve piece (seam number 2) – seam mark on sleeve meets top sleeve seam. Stitch. Press seam allowances open.

Front sleeve seam:

Fold each side piece toward front edge, wrong side facing in. Lay underneath sleeve piece right sides together with attached sleeve front (seam number 3) and upper sleeve piece. Pin front sleeve seam (image 5). Stitch from wrong side of attached sleeve, beginning at the top, exactly at last stitch of front section seam (image 6). Press seam allowances open.



Sewing

Stitch ribbons in place:

Pin wide black petersham ribbon to lower sleeve edge, to meet hem line. Edgestitch ribbon in place. Then sew the brown petersham ribbon, the 2 cm (3/4 in) wide black petersham ribbon, the leather band, the 1.5 cm (5/8 in) wide black petersham ribbon, brown petersham ribbon and 1 band with metal rivets in place, one after the other, spacing them 5 mm (3/16 in) apart. Stitch the second band with metal rivet directly next to the first, leaving no space between them. On zips, trim away bottom end close to end piece. Remove the slider. Pin one zip 5 mm (3/16 in) above rivet bands, with teeth of zip pointing down. Stitch zip tape in place. Then pin second zip tape in place, to meet sleeve attachment seam, and edgestitch tape in place. Stitch again close to zip teeth.

Back sleeve seam:

Lay underneath sleeve pieces right sides together with attached back sleeve pieces (seam number 4) and with upper sleeve pieces. Pin back sleeve seam. Stitch, beginning at top, exactly at corner. Interrupt stitching in area of zip teeth. Sew the resulting seam opening closed by hand.

Clip back close to last stitch (image 7). Press seam allowances open.

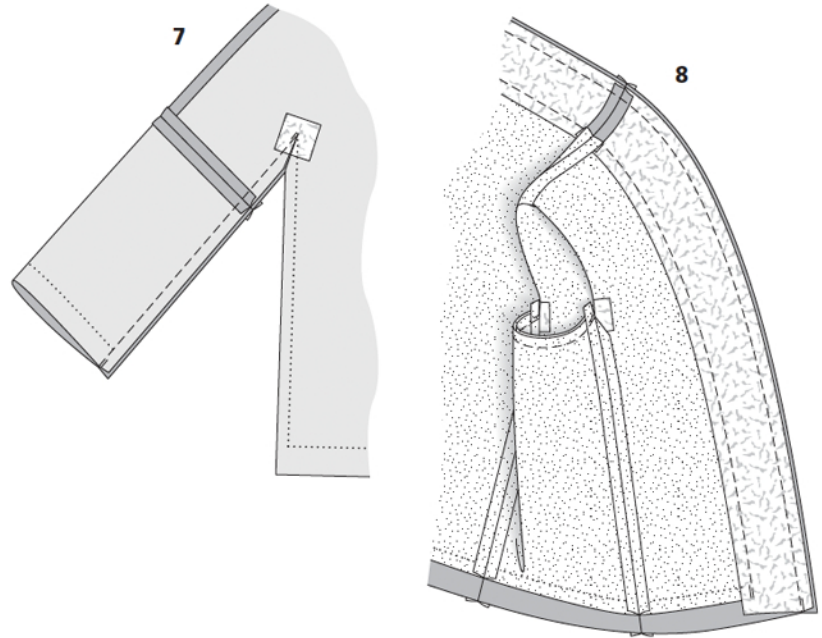
Turn sleeve right side out.

Back section seams:

Lay each side piece right sides together with back. Pin section seam (seam number 4). Work from side of back piece to stitch seam, beginning at the top, exactly at end of cut (last stitch of back sleeve seam). Press seam allowances open.

Lower sleeve attachment seam:

Lay upper edge of each lower sleeve piece right sides together with upper edge of side piece, matching seam marks 5. Pin lower sleeve piece and side piece together, from corner to corner (seam numbers 3 and 4). Stitch.



Hem:

Press hem allowances on jacket and sleeves to inside but do not yet sew in place.

Gems and beads:

Sew the gems and beads to the ribbons as illustrated or as desired.

Lining:

For the ease pleat in lining back, stitch from upper and lower edges, along centre back, each approx. 5 cm (2 ins) long. Press pleat to one side. Pin front lining pieces right sides together with inside edges of front facings. Pin back lining piece to lower edge of back facing. Stitch. Press seam allowances onto lining pieces.

Stitch seams of lining as instructed for jacket.

Front edges, neck edge:

Turn hem allowance of jacket down again. Pin facing with lining right sides together with front and back pieces. Stitch along front and neck edges (image 8). Trim seam allowances. Lay facing with lining inside jacket, with wrong sides together, pulling linings into sleeves. Press front and neck edges. Pin shoulder seams of facing and jacket together exactly. Turn lining up and sew seam allowances of shoulder seams together, with a few stitches by hand. Fold hem allowance of jacket to inside again and sew in place loosely by hand. Turn edges of facing and lining under along lower jacket edge. Press fold edge of facing. On lining, only press fold lightly. Push lower lining edge up toward upper edge of hem allowance, in a shallow curve, and pin. Sew lining and lower facing edges to hem allowance.

Sew hem allowance of sleeves in place loosely by hand. Turn sleeve lining edges under and sew to sleeve hem allowances.