

### 124 A,B Trousers

Sizes 36, 38, 40, 42, 44

Side length 104 cm (41 ins)

Trousers edge is 1 cm (3/8 in) below waist

Hem circumference 60 cm (24 ins)

### Materials

#### View A:

##### Twill,

width: 150 cm (59 ins)

length: 1.50 – 1.50 – 2.00 – 2.00 – 2.00 m

(1 3/4 – 1 3/4 – 2 1/4 – 2 1/4 – 2 1/4 yds).

Vilene/Pellon G 785 & Vilene Bias Tape/ stay tape.

#### Petersham ribbon,

width: 1 cm (3/8 in)

length: 1.50 – 1.60 – 1.70 – 1.80 – 1.90 m

(1 3/4 – 1 3/4 – 1 7/8 – 2 – 2 1/8 yds).

1 invisible zip, 22 cm (9 ins) long

#### View B:

##### Satin,

width: 140 cm (55 ins)

length: 2.15 – 2.15 – 2.15 – 2.35 – 2.35 m

(2 1/2 – 2 1/2 – 2 1/2 – 2 5/8 – 2 5/8 yds).

Vilene/ Pellon G 785 & Vilene Bias Tape/ stay tape.

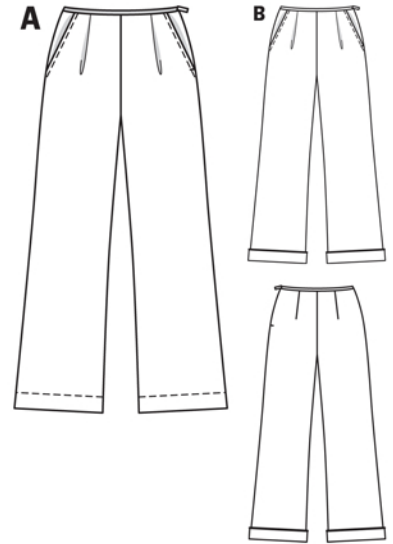
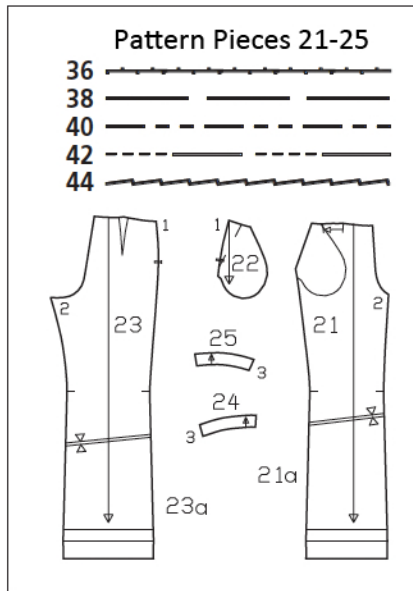
Piping in a contrasting colour: 1.30 m (1 1/2 yds).

1 invisible zip, 22 cm (9 ins) long

**Recommended fabrics:** Lightweight, softly draping trouser fabrics.

### Preparations

Print the pattern out on letter or A4 sized paper. It is **very important** to not scale or fit any of the pages, you must print the document in **actual size**. Your pattern will print on multiple pages, which you will then tile together. Arrange the sheets on a large, hard and flat surface matching up the numbers and letters (i.e. 6A to 6A). Cut or fold one of the sides and match the edge to it's corresponding side. Then, tape down in place so paper is secure.



Trace the pattern pieces from the pattern sheet following the lines and markings for the correct size and the correct style (124 A & B). This pattern also includes pattern pieces, lines and markings for style 125 that should be ignored.

Trace the pocket piece from piece 21 as a separate pattern piece – it is the same for all sizes.

**burda style magazine patterns do not have seam allowance included.**

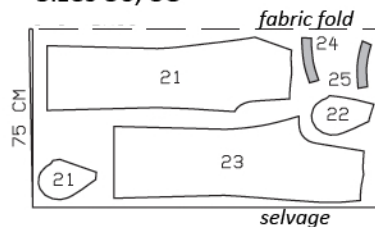
#### To be added:

Seams and edges 1.5 cm (5/8 in), hem for view A 5 cm (2 ins), turn-up and hem are already included on the pattern for view B.

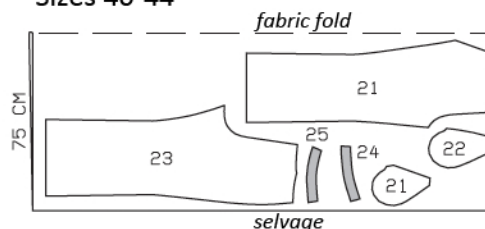
#### View A

Twill, 150cm wide

Sizes 36, 38



Sizes 40-44



Cut from a double layer of fabric, right side facing in.

### Cutting Out

#### View A, B:

21 front trouser piece	2x
pocket piece	2x
22 side hip yoke with integrated pocket piece	2x
23 back trouser piece	2x
24 front facing	2x
25 back facing	2x

#### View B only:

Draft the following pattern piece NOT included in the pattern:

a) bias binding strip for upper trousers edge 75 – 79 – 83 – 87 – 91 cm (29 3/4 – 31 1/4 – 32 3/4 – 34 1/4 – 36 ins) long, 4 cm (1 5/8 ins) wide (incl. allowances).

**Interfacing:** See shaded area on pattern layout. Iron Vilene Bias Tape/ stay tape to wrong side of front pocket opening edges.

### Sewing

#### View A

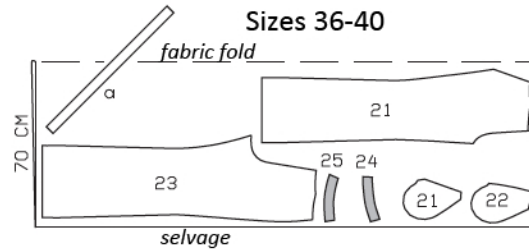
On front trouser pieces, lay pleats in direction of arrows and baste. On back trouser pieces, stitch darts and press toward centre back.  
 n Hip yoke pockets: Stitch pocket pieces right sides together with pocket opening edges of front trouser pieces. Turn pocket pieces to inside. Topstitch 7 mm (1/4 in) from pocket opening edges. Pin pocket opening edges to side hip yokes at abutting lines. Stitch edges of pocket pieces together. Baste pocket pieces to wrong side of trouser fronts.

Stitch right side seam and inside leg seams. Press seam allowances open. Stitch centre front and back seams as continuous seam. Press allowances toward right trouser pieces.

On facing, stitch centre front and back seam. Stitch right side seam, as mirror image of trouser seam. Neaten lower facing edge. Pin facing to upper trousers edge, wrong sides facing, and baste in place, close to seam allowance. Trim

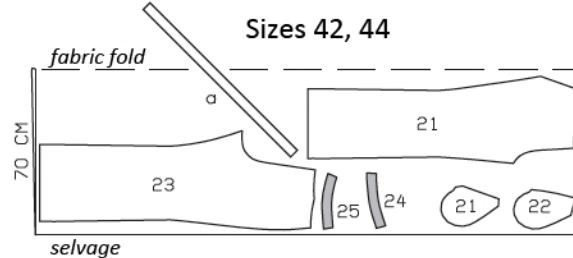
#### View B

Satin, 140cm wide  
 Sizes 36-40



Cut from a double layer of fabric, right side facing in.  
 View B: Cut the bias strip last from a single layer of fabric.

#### Sizes 42, 44



away seam allowance on upper trousers edge.

Cut petersham ribbon into two equal pieces. Baste one piece of ribbon to inside upper edge of trousers so that upper edge of ribbon extends by approx. 2 mm (1/8 in). Pin second piece of ribbon to outside upper edge of trousers. Edgestitch ribbon edges together.

Sew invisible zip to left slit edges, see the “Helpful Hint” on next page. Stitch left side seam from lower edge to zip. At upper trousers edge, turn zip tapes under and sew in place.

Press hem allowances to inside. Stitch 4 cm (1 5/8 ins) from lower edge.

#### View B

In general, sew as for view A. Omit petersham ribbon. Instead, bind upper trousers edge with bias strip. Sew lower leg edges with turn-ups.

**Bind upper trousers edge:** Fold binding strip in half lengthwise, right side facing out, and press. Unfold strip out flat again. Now fold each long edge of strip to the pressed fold and press again. Unfold pressed binding strip and pin to inside upper edge of trousers. Stitch binding strip in place, 1 cm (3/8 in) from edge, along the fold. Turn binding out, over upper trousers edge, and baste to joining seam. Topstitch binding close to edge.

**Turn-ups:** Press each trouser leg to inside on marked turn-up fold line and machine stitch in place, or sew by hand. Fold lower edges of legs up, 4 cm (1 5/8 ins) wide, and press. Pin piping under upper edges of turn-ups, turning ends of piping under at inside leg seams. Use your machine’s one-sided edge foot (zipper foot) to stitch the piping in place. Sew upper edge of each turn-up loosely in place by hand, approx. 2 cm (3/4 in) below pressed fold.



These special zippers come in various lengths. The zipper should be at least 2 cm (3/4 in) longer than the slit. It is sewn in place before the seam below the slit is stitched. A special presser foot is required to sew the zipper in place.

### **Sewing the zipper in place:**

Open the zipper and push the coil back with your thumbnail to reveal the seam marking between the tape and the coil. Place the open zipper right side down on the right fabric side of one slit edge.

In order to stitch the zipper in place exactly along the marked seam line, you must first calculate the distance between the tape edge and the fabric edge as follows: width of seam allowance minus 1 cm (3/8 in) tape width = distance from edge of fabric. This will yield a value of 5 mm (3/16 in) if the width of the seam allowance is 1.5 cm (5/8 in).

Pin the top end of the zipper tape in place, the calculated distance from the edge of the fabric. The bottom end of the zipper will extend past the marked end of the slit. Place the presser foot on the zipper so that the coil is in the notch to the right of the needle (1). Stitch zipper in place, from the top to the marked end of the slit. Close zipper.

Place the other zipper tape face down on the opposite slit edge and pin in place at the top. Open zipper again. Place the presser foot on the top end of the zipper so that the coil is in the notch to the left of the needle (2). Sew the zipper in place, from the top to the end of the slit. Close zipper.

Now stitch the seam below the zipper, from bottom to top. Turn the loose lower end of the zipper out of the way, over the seam allowance. Stitch as close as possible to the last stitches of the zipper seams. Trim away excess zipper and bind the end with a scrap of fabric.