

### 130 Trousers

Sizes 34, 36, 38, 40, 42

Side length with waistband 89 cm (35 ins)

Upper waistband edge: centre back = waist,  
centre front approx. 2 cm (3/4 in) below waist

Hem circumference 30 cm (12 ins)

### Materials

**Stretch double jersey,**  
width: 140 cm (55 ins)  
length: 1.30 m (1 1/2 yds) for all sizes.

Vilene/Pellon G 785.

1 zip, 10 cm (4 ins) long and 1 button.

**Recommended fabrics:** Two-way stretch fabrics.  
Use only very elastic fabrics.

### Preparations

Print the pattern out on letter or A4 sized paper. It is **very important** to not scale or fit any of the pages, you must print the document in **actual size**. Your pattern will print on multiple pages, which you will then tile together. Arrange the sheets on a large, hard and flat surface matching up the numbers and letters (i.e. 6A to 6A). Cut or fold one of the sides and match the edge to it's corresponding side. Then, tape down in place so paper is secure.

Trace the pattern pieces from the pattern sheet following the lines and markings for your size.

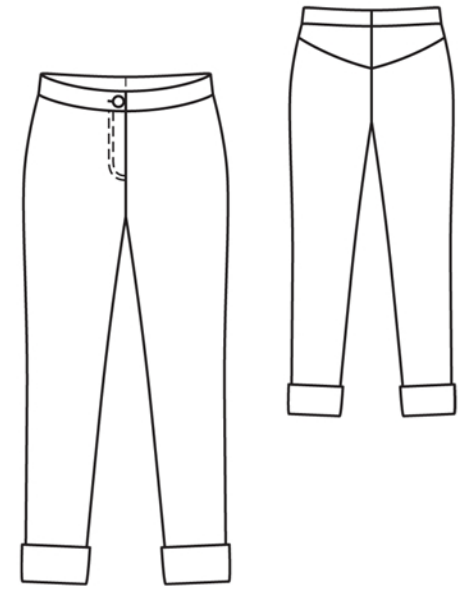
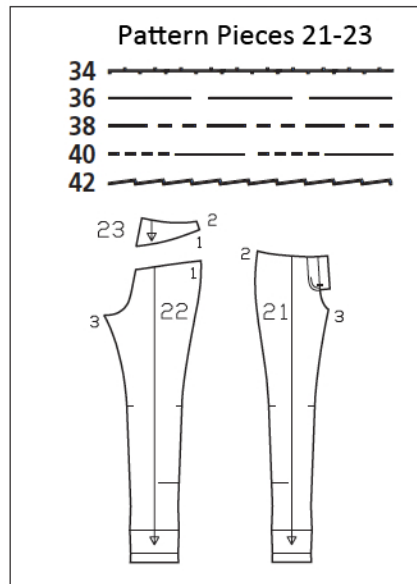
The stitching lines at the zip slit are marked for size 34. For sizes 36 – 42, mark the stitching lines the same distance from centre front as for size 34.

**burda style magazine patterns do not have seam allowance included.**

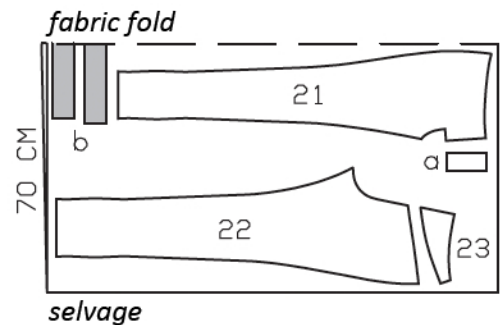
To be added:

Seams and edges 1.5 cm (5/8 in).

Turn-up and hem allowance are already included on the pattern piece.



Cut pieces from a double layer of fabric, right side facing in. Use fabric with a width of 140cm.



### Cutting Out

21 front trouser piece 2x  
22 back trouser piece 2x  
23 back yoke 2x

Draft the following pieces NOT included in the pattern:

a) left underlap piece, 12 cm (4 3/4 ins) long, 6 cm (2 1/2 ins) wide, finished width 3 cm (1 1/4 ins),

b) right waistband, 40 – 42 – 44 – 46 – 48 cm (15 3/4 – 16 1/2 – 17 1/4 – 18 1/2 – 19 ins) long, left waistband with 3 cm (1 1/4 in) underlap, 43 – 45 – 47 – 49 – 51 cm (17 – 17 3/4 – 18 1/2 – 19 1/4 – 20 1/4 ins) long, each 6 cm (2 1/2 ins) wide, finished width 3 cm (1 1/4 ins).

**Interfacing:** Iron to wrong side of waistband pieces.

## Sewing

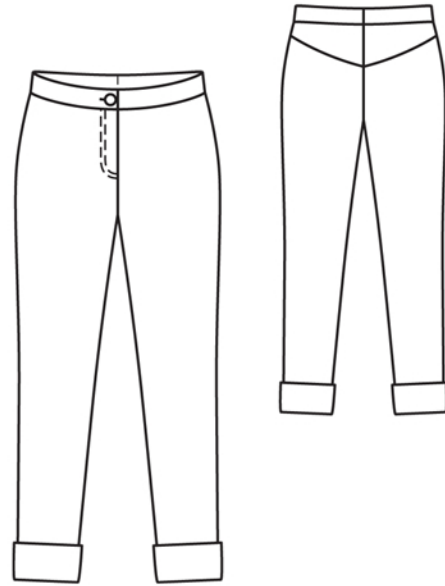
**Note:** Stitch seams on stretch fabrics with a special stretch stitch or at a narrow zigzag setting.

Stitch back yoke pieces to trouser backs, right sides together. Press allowances onto yokes. Topstitch yokes close to seams.

Stitch side seams and inside leg seams. Press seam allowances open. Stitch centre front seam from slit mark to inside leg seam.

**Zip opening:** Press self-facings on slit edges to inside. Stitch along centre front on the right and stitch 5 mm (3/16 in) before centre front on the left. Stitch zip under left slit edge (underlap), close to teeth of zip. Pin slit closed matching centre fronts. Pin loose zip tape to right facing, not catching trouser piece. Baste facing in place. Topstitch slit from upper edge to 3 cm (1 1/4 ins) before end, as marked. Fold underlap piece lengthwise and stitch across bottom end. Turn right side out. Lay underlap under left slit edge and pin to facing. Stitch facing to underlap, close to zip attachment seam. Lay slit closed again. Topstitch to end, catching underlap.

**Waistband and centre back seam:** Stitch right and left waistband to upper trouser edges, stitching waistband underlap to underlap piece. Press allowances of joining seams onto waistband pieces. Stitch centre back seam on trousers and waistband. Press seam allowances open from upper edge to beginning of crotch curve. Do not press allowances flat along curve. Fold waistband lengthwise right side facing in. At ends of waistband, turn up allowance on inside edge. Stitch across waistband ends. At waistband ends, turn inside edge under, approx. 4 cm (1 1/2 ins) long, and baste, then lay remaining edge flat over joining seam. Work from right side to stitch along line of joining seam. Topstitch waistband close to edge. Work a buttonhole in right waistband end.



**Turn-ups:** Press trouser legs to inside on turn-up fold line. Sew in place by hand or machine. Fold lower edges up to abutting line and press. Tack turn-ups to seams, with a few stitches by hand.