

### 132 Shirt

Men's sizes 46, 48, 50, 52, 54

Women's sizes 40, 42, 44, 46, 48

Back length approx. 75 cm (30 ins)

### Materials

**Linen,**  
width: 150 cm (59 ins)  
length: 1.50 – 1.50 – 1.50 – 1.55 – 1.55 m (1 3/4 yds).

Vilene/Pellon G 785.

8 flat buttons.

Recommended fabrics: Shirting.

### Preparations

Print the pattern out on letter or A4 sized paper. It is **very important** to not scale or fit any of the pages, you must print the document in **actual size**. Your pattern will print on multiple pages, which you will then tile together. Arrange the sheets on a large, hard and flat surface matching up the numbers and letters (i.e. 6A to 6A). Cut or fold one of the sides and match the edge to it's corresponding side. Then, tape down in place so paper is secure.

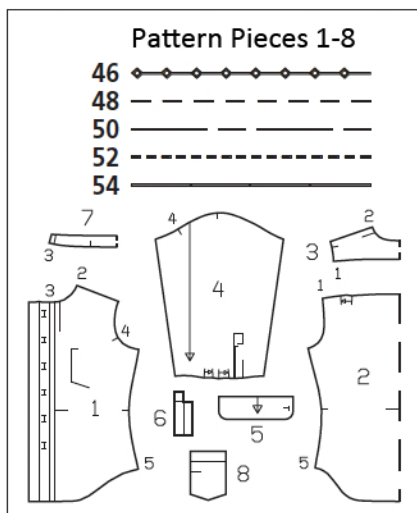
Trace the pattern pieces from the pattern sheet following the lines and markings for your size.

The buttonholes marked on piece 1 are for size 46. For sizes 48 – 54, mark the top buttonhole the same distance from neck edge as for size 46. The bottom buttonhole is the same for all sizes. Space the other buttonholes evenly in between. The pleat arrow marked on piece 2 is for size 46. For the other sizes, mark the pleat arrow according to the size lines.

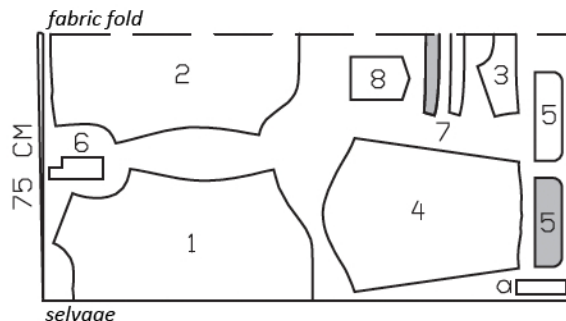
**burda style magazine patterns do not have seam allowance included.**

To be added:

Seams and edges 1.5 cm (5/8 in),  
hem 2 cm (3/4 in), no allowance on  
vertical edge of front self-facing.



Cut pieces from a double layer of fabric, right side facing in. Use fabric with a width of 150cm.



### Cutting Out

1 front	2x
2 back, on a fold	1x
3 yoke, on a fold	1x
4 sleeve	2x
5 cuff	4x
6 sleeve placket band	2x
7 standing collar, on a fold	2x
8 upper left pocket	1x

Draft the following piece NOT included in the pattern:

a) 2 binding strips for sleeve plackets, 14 cm (5 1/2 ins) long, 4 cm (1 5/8 ins) wide (incl. allowances).

**Interfacing:** See shaded area on pattern layout. Interface outer collar piece and outer cuff

## Sewing

Fold pleats on back in direction of arrows and baste. Stitch yoke to fronts and to back. Press seam allowances onto yoke. Topstitch yoke close to joining seams.

Sew sleeve plackets on right and left sleeves as mirror images: Press allowances on sleeve band to inside, except allowances on long attachment edge and lower edge, clipping allowance diagonally into corner. Press band on fold line, wrong side facing in, then unfold again. Slash sleeves as marked. Pin binding strip right sides together with back slash edge. Stitch in place, 1 cm (3/8 in) from edge, ending 7 mm (1/4 in) above end of slash. Clip sleeves from end of slash diagonally to end of seam. Fold binding strip over cut edge to inside, turn edge under, and pin to joining seam. Work from outer side to topstitch close binding edge. Stitch outer half of sleeve placket band to sleeve, along joining line, right sides facing. Clip sleeve approx. 1 cm (3/8 in) diagonally up from end of slash to band joining seam. Fold small triangle of fabric up onto right fabric side of sleeve and lay upper end of binding on right fabric side of sleeve. Lay band over placket and pin upper end in place. Fold inside half of band to inside, on fold line, and baste to joining seam. Topstitch band close to joining seam. Edgestitch upper band end in place and stitch across band as marked.

Fold pleats in lower sleeve edges in direction of arrows and baste.

Stitch sleeves to fronts, yokes, and back. Press seam allowances onto sleeves.

Stitch side seams and sleeve seams as continuous seams. Neaten seam allowances together and press onto back.

Turn hem allowance to inside, turn under by half width, press, and stitch.

Fold front self-facings to inside on fold line and press. Work buttonholes in left self-facing.



On both front pieces, turn facings to inside and press. Baste to neck edge and sew to hem edge. Topstitch left front as marked and 7 mm (1/4 in) from first line of topstitching. Topstitch right front as marked.

**Standing collar:** Lay collar pieces right sides together. Stitch together along front and upper edges, beginning and ending stitching in front, exactly on seam line of joining edge. Trim seam allowances. Turn collar right side out and press. Stitch outer collar piece to neck edge. Turn edge of inside collar piece under and baste along joining seam. Topstitch collar close to joining seam.

**Cuffs:** Lay each interfaced cuff piece on a cuff piece with no interfacing, right sides together. Stitch together across ends and along lower edge, beginning and ending stitching exactly at seam line on joining edge. Turn cuffs right side out. Stitch cuffs to lower sleeve edges. Turn inside edges under and baste in place. Topstitch cuffs close to joining seam. Work one buttonhole in front end of each cuff.

**Patch pocket:** Press self-facing on upper pocket edge to wrong side and stitch in place as marked. Press allowances at side and lower edges to wrong side. Edgestitch pocket to left front, as marked.