

131 Dress

Sizes 34, 36, 38, 40, 42

Length from waist 60 cm (23 3/4 ins)

Materials

Widthwise striped seersucker with two-way stretch,
width: 145 cm (57 ins)

length: 1.35 – 1.45 – 1.45 – 1.55 – 1.65 m
(1 5/8 – 1 3/4 – 1 3/4 – 1 3/4 – 1 7/8 yds),
cut widthwise.

Vilene Bias Tape/stay tape.

1 invisible zip, 60 cm (24 ins) long

Recommended fabrics: Stretch dress fabrics. Use only fabrics with two-way stretch.

Preparations

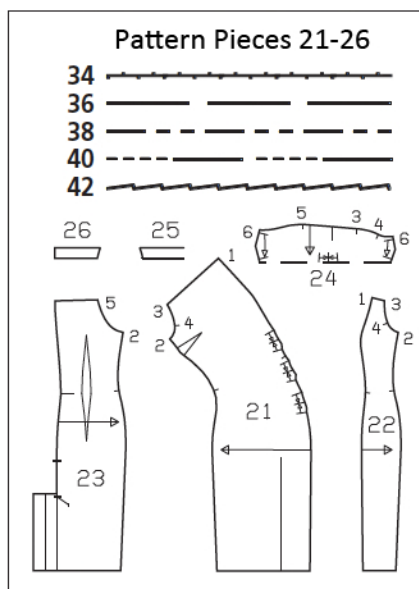
Print the pattern out on letter or A4 sized paper. It is **very important** to not scale or fit any of the pages, you must print the document in **actual size**. Your pattern will print on multiple pages, which you will then tile together. Arrange the sheets on a large, hard and flat surface matching up the numbers and letters (i.e. 6A to 6A). Cut or fold one of the sides and match the edge to it's corresponding side. Then, tape down in place so paper is secure.

Trace the pattern pieces from the pattern sheet following the lines and markings for your size. Note different lines for right and left edges of back vent but cut the pieces the same size initially from the double layer of fabric. The pleat arrows on pieces 21 and 24 are marked for size 34. For the other sizes, remark pleat arrows accordingly.

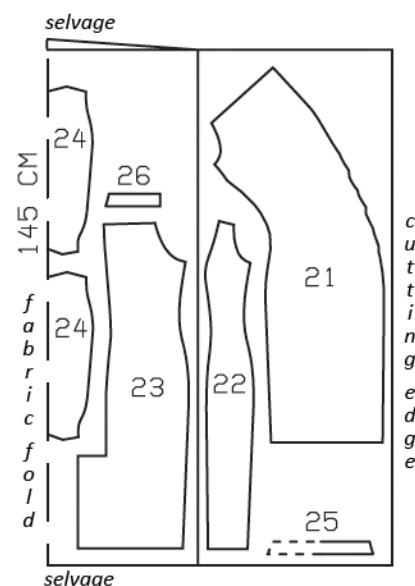
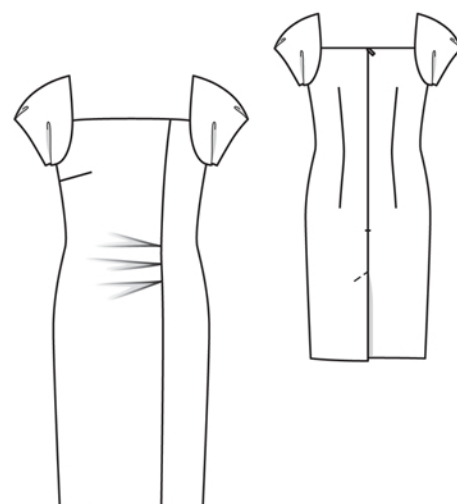
burda style magazine patterns do not have seam allowance included.

To be added:

Seams and edges 1.5 cm (5/8 in),
hem 4 cm (1 5/8 ins).



Fold the fabric as shown in the pattern layout. Right side faces in on a double layer of fabric; right side faces up on a single layer of fabric. Place the asymmetric front pieces on the right side of the fabric with their printed side facing up.



Cutting Out

21 front	1x
22 left side front	1x
23 back	2x
24 sleeve, on a fold	2x
25 front neck facing, on a fold	1x
26 back neck facing	2x

Vilene Bias Tape/stay tape: Iron to wrong side of neck edges. Also iron Bias Tape/stay tape to wrong side of upper edge of sleeves (outer half) between markings (seam numbers 3 and 5).

Sewing

Stitch bust darts and press darts down.

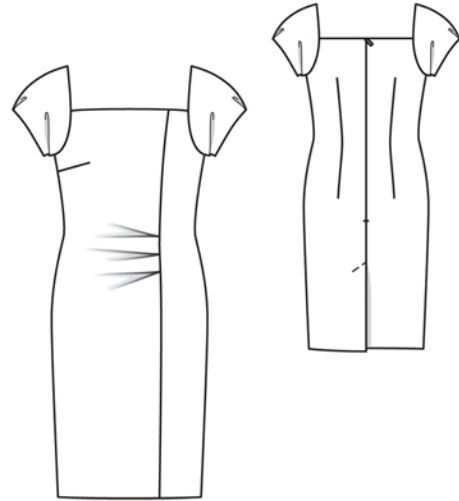
Fold pleats in front in direction of arrows as indicated on pattern and baste in place. Stitch left side front to front. Press seam allowances toward centre.

Stitch darts in back pieces. Press darts toward centre. Sew invisible zip to back slit edges, see "Helpful Hint" on next page. Stitch centre back seam from vent to zip. Press seam allowances of centre seam open. Press left vent facing to inside. Turn right underlap toward left back and press seam allowance of right back to wrong side above vent, tapering as you go to avoid the need to clip the allowance. Trim right facing to 5 cm (2 ins) wide. Topstitch left back at top of vent at an angle, as marked, catching underlap.

Stitch side seams, right sides together.

Fold sleeves on fabric fold line, right side facing in. Stitch upper edges together between seam numbers 3 and 5. Clip allowances at seam ends. Turn sleeves right side out and press edges. Baste open edges together. Fold pleats in lower sleeve edges in direction of arrows and edges-titch to edge. Fold side sleeve pleats in direction of arrows and baste. Stitch sleeve seams (seam number 6). Press seam allowances open. Turn lower ends of seam allowances under diagonally and sew in place.

Stitch sleeves to armhole edges from seam number 3 to seam number 5 – allowances of upper front and back edges extend. Press seam allowances of sleeve attachment seams toward front and back, approx. 5 cm (2 ins) long, beginning at the upper edge.



Pin back facing right sides together with upper back edge. At zip slit, turn facing back, approx. 5 mm (3/16 in) before edge of slit, and pin to upper edge. Turn allowances at back slit edges to outside and pin to upper edge, over facing. Stitch along upper back edges. Turn allowances on opening edges to inside. Turn facings up and stitch to seam allowances, as far as possible, close to seam. Turn facings to inside and sew to zip tapes. Stitch front facing right sides together with upper edge of front. Turn facing up and stitch to seam allowances, close to seam. Turn facing to inside. Turn facing edges under and sew to sleeve attachment seams.

At hem edge, unfold back facings. Press hem allowance to inside and sew in place by hand. Turn facings to inside again and sew to hem allowance.



These special zippers come in various lengths. The zipper should be at least 2 cm (3/4 in) longer than the slit. It is sewn in place before the seam below the slit is stitched. A special presser foot is required to sew the zipper in place.

Sewing the zipper in place:

Open the zipper and push the coil back with your thumbnail to reveal the seam marking between the tape and the coil. Place the open zipper right side down on the right fabric side of one slit edge.

In order to stitch the zipper in place exactly along the marked seam line, you must first calculate the distance between the tape edge and the fabric edge as follows: width of seam allowance minus 1 cm (3/8 in) tape width = distance from edge of fabric. This will yield a value of 5 mm (3/16 in) if the width of the seam allowance is 1.5 cm (5/8 in).

Pin the top end of the zipper tape in place, the calculated distance from the edge of the fabric. The bottom end of the zipper will extend past the marked end of the slit. Place the presser foot on the zipper so that the coil is in the notch to the right of the needle (1). Stitch zipper in place, from the top to the marked end of the slit. Close zipper.

Place the other zipper tape face down on the opposite slit edge and pin in place at the top. Open zipper again. Place the presser foot on the top end of the zipper so that the coil is in the notch to the left of the needle (2). Sew the zipper in place, from the top to the end of the slit. Close zipper.

Now stitch the seam below the zipper, from bottom to top. Turn the loose lower end of the zipper out of the way, over the seam allowance. Stitch as close as possible to the last stitches of the zipper seams. Trim away excess zipper and bind the end with a scrap of fabric.