

116 Blouse

Sizes 34, 36, 38, 40, 42

Back length approx. 60 cm (24 ins)

Materials

Note: This style is sewn with 2 layers of the thin original fabric.

Chiffon,

width: 140 cm (55 ins)

length: 1.90 – 1.90 – 1.90 – 2.00 – 2.00 m

(2 1/8 – 2 1/8 – 2 1/8 – 2 1/4 – 2 1/4 yds).

Recommended fabrics: Fine, lightweight blouse fabrics.

Preparations

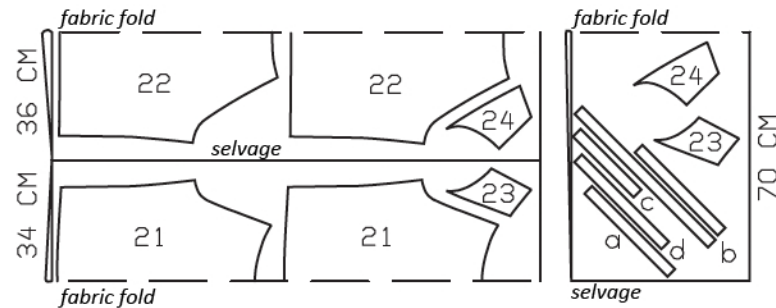
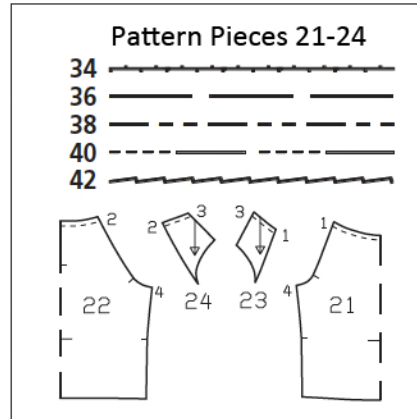
Print the pattern out on letter or A4 sized paper. It is **very important** to not scale or fit any of the pages, you must print the document in **actual size**. Your pattern will print on multiple pages, which you will then tile together. Arrange the sheets on a large, hard and flat surface matching up the numbers and letters (i.e. 6A to 6A). Cut or fold one of the sides and match the edge to it's corresponding side. Then, tape down in place so paper is secure.

Trace the pattern pieces from the pattern sheet following the lines and markings for the correct size and the correct style (116). This pattern also includes pattern pieces, lines and markings for style 117 that should be ignored.

burda style magazine patterns do not have seam allowance included.

To be added:

Seams, edges and hem 1 cm (3/8 in).



Fold the fabric as shown in the pattern layout, right side facing in. Use fabric with a width of 140cm.

Cutting Out

21 front, on a fold 2x
 22 back, on a fold 2x
 23 sleeve front 4x
 24 sleeve back 4x

Draft the following pieces NOT included in the pattern:

- a) bias binding strip for back slit, 32 – 33 – 34 – 35 – 36 cm (12 3/4 – 13 – 13 1/2 – 13 3/4 – 14 1/4 ins) long, 2 cm (3/4 in) wide (incl. allowances),
- b) bias strip for neck binding and tie bands, a total of 125 cm (49 1/4 ins) long, 2 cm (3/4 in) wide (incl. allowances),
- c) 2 bias strips for armholes, 24 – 24 – 25 – 25 – 26 cm (9 1/2 – 9 1/2 – 10 – 10 – 10 1/4 ins) long, 3 cm (1 1/4 ins) wide (incl. allowances),
- d) 2 bias binding strips for lower sleeve edges, 34 – 35 – 36 – 37 – 38 cm (13 1/2 – 13 3/4 – 14 1/4 – 14 1/2 – 15 ins) long, 2 cm (3/4 in) wide (incl. allowances).

Sewing

Stitch side seams. Trim seam allowances to 7 mm (1/4 in) wide, neaten together, and press to one side.

Place outer front and back over inside layer, with wrong side facing right side. Baste layers together along armhole edges. Baste neck edges together close to marked seam line. Baste the fabric layers together closely around back slit mark.

Back slit: Cut back along centre, to marked end of slit. Spread cut edges apart to a straight line and stitch to one long edge of binding strip, stitching 5 mm (3/16 in) from edge and tapering stitching toward bottom of slit. Press binding strip over attachment seam, into slit. Fold strip to inside, to a width of 5 mm (3/16 in), turn edge under over attachment seam, and baste. Topstitch binding close to edge, catching inside edge. On inside lower end of slit, stitch diagonally across strip.

Baste pairs of sleeve pieces together, with wrong side facing right side, basting next to seam allowance on upper and lower edges. Treat these pieces as one layer of fabric from now on. Stitch top sleeve seams (seam number 3). Trim seam allowances to 7 mm (1/4 in) wide, neaten together, and press onto back.

Bind lower sleeve edges: Trim away allowance on lower edge of each sleeve. Fold binding strip in half lengthwise, right side facing out, and press. Unfold strip out flat again. Now fold each long edge in to the pressed crease and press again. Unfold the pressed binding strip. Pin to inside of sleeve edge and stitch in place, 5 mm (3/16 in) from edge, along the fold. Fold binding out over sleeve edge, turn raw edge under, and baste. Edgestitch binding in place.



Stitch sleeves to front and back (seam numbers 1 and 2). Fold bias strips for armhole edges in half lengthwise and press, right side facing out. Pin folded bias strips to armhole edges, below sleeves, so that fold edge of each strip lies on garment piece, 7 mm (1/4 in) past seam line and ends of strip lie over lower sleeve edges. Stitch along lines of armholes. Trim seam allowances. Trim allowances of sleeve joining seams to 7 mm (1/4 in) wide, neaten together and press onto front and back. Turn bias strips to inside and press edges. Topstitch 5 mm (3/16 in) from armhole edges.

On neck edge, trim away seam allowance. Gather neck edge to 16.5 – 17 – 17.5 – 18 – 18.5 cm (6 1/2 – 6 3/4 – 7 – 7 1/8 – 7 1/4 ins) in front, to 8 cm (3 1/4 ins) on each sleeve, and to 5 – 5 – 5.5 – 5.5 – 6 cm (2 – 2 – 2 1/4 – 2 1/4 – 2 3/8 ins) on back. Bind neck edge as for lower sleeve edges, leaving ends of binding strip extending evenly at back slit edges, for tie bands. Stitch edges of each tie band closed.

Neaten hem edges with closely spaced zigzag stitching: Press allowance to wrong side. Work from right side to stitch along fold edge with narrow, closely spaced zigzag stitching. On inside, carefully trim allowance close to stitching.