

### 120 Skirt

Sizes 34, 36, 38, 40, 42, 44

Skirt length from waist 64 cm (25 1/4 ins)

Upper skirt edge is 5 cm (2 ins) below waist

### Materials

**Natté,**

width: 145 cm (57 ins)

length: 0.90 m (1 yd) for all sizes.

Vilene/Pellon G 785.

1 invisible zip, 40 cm (16 ins) long

**Recommended fabrics:** Skirt fabrics with some body.

### Preparations

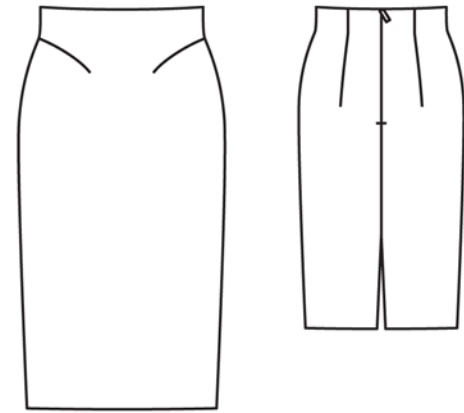
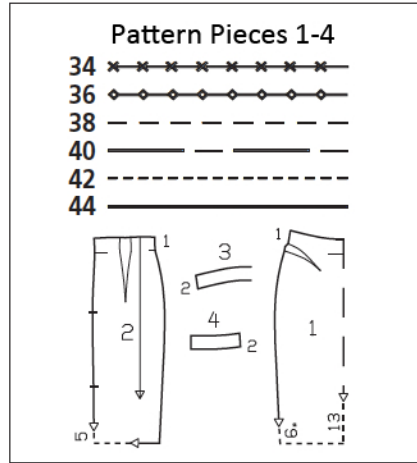
Print the pattern out on letter or A4 sized paper. It is **very** important to not scale or fit any of the pages, you must print the document in **actual size**. Your pattern will print on multiple pages, which you will then tile together. Arrange the sheets on a large, hard and flat surface matching up the numbers and letters (i.e. 6A to 6A). Cut or fold one of the sides and match the edge to it's corresponding side. Then, tape down in place so paper is secure.

Trace the pattern pieces from the pattern sheet following the lines and markings for your size.

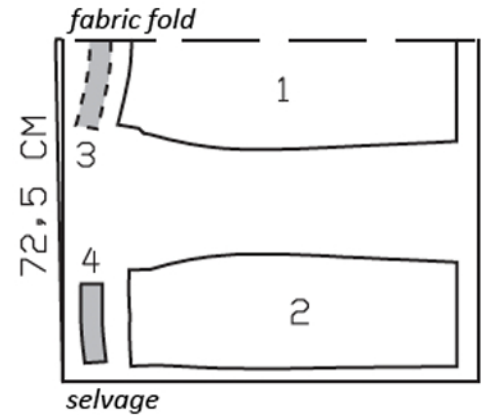
**burda style magazine patterns do not have seam allowance included.**

Seam and hem allowance to be added:

Seams and edges 1.5 cm (5/8 in),  
back slit edges 3 cm (1 1/4 ins), hem  
4 cm (1 5/8 ins).



Cut pieces from a double layer of fabric, right side facing in. Use fabric with a width of 145cm.



### Cutting Out

1 front skirt panel, on a fold	1x
2 back skirt panel	2x
3 front facing, on a fold	1x
4 back facing	2x

**Interfacing:** Iron to wrong side of facing pieces.

## Sewing

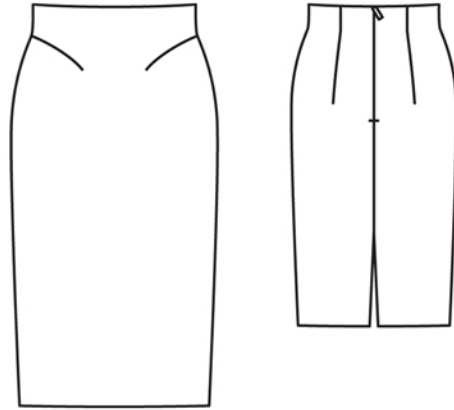
On skirt front, cut along centre of each dart to approx. 4 cm (1 5/8 ins) before point. Stitch front darts and press up. Stitch back darts and press toward centre.

Sew invisible zip to back skirt edges, see the "Helpful Hint" on next page. Stitch centre back seam from vent to zip slit. Press seam open. Press allowances on vent edges to inside.

Stitch side seams on skirt and on facing. Press seam allowances open.

**Upper skirt edge:** Pin facing right sides together with upper skirt edge. At zip slit, turn facing edges back, approx. 5 mm (3/16 in) before slit edge, and pin to upper edge. Turn allowances at slit edges of skirt to outside and pin to upper skirt edge, over facing. Stitch along upper skirt edge. Turn allowances on slit edges to inside. Turn facing up and stitch to seam allowances, as far as possible, close to seam. Turn facing to inside and sew to zip tapes. Sew lower facing edge to seams.

At hem edge, open vent allowances again. Press hem allowance to inside and sew in place by hand. Turn vent allowances to inside again and sew to hem allowance.





These special zippers come in various lengths. The zipper should be at least 2 cm (3/4 in) longer than the slit. It is sewn in place before the seam below the slit is stitched. A special presser foot is required to sew the zipper in place.

### **Sewing the zipper in place:**

Open the zipper and push the coil back with your thumbnail to reveal the seam marking between the tape and the coil. Place the open zipper right side down on the right fabric side of one slit edge.

In order to stitch the zipper in place exactly along the marked seam line, you must first calculate the distance between the tape edge and the fabric edge as follows: width of seam allowance minus 1 cm (3/8 in) tape width = distance from edge of fabric. This will yield a value of 5 mm (3/16 in) if the width of the seam allowance is 1.5 cm (5/8 in).

Pin the top end of the zipper tape in place, the calculated distance from the edge of the fabric. The bottom end of the zipper will extend past the marked end of the slit. Place the presser foot on the zipper so that the coil is in the notch to the right of the needle (1). Stitch zipper in place, from the top to the marked end of the slit. Close zipper.

Place the other zipper tape face down on the opposite slit edge and pin in place at the top. Open zipper again. Place the presser foot on the top end of the zipper so that the coil is in the notch to the left of the needle (2). Sew the zipper in place, from the top to the end of the slit. Close zipper.

Now stitch the seam below the zipper, from bottom to top. Turn the loose lower end of the zipper out of the way, over the seam allowance. Stitch as close as possible to the last stitches of the zipper seams. Trim away excess zipper and bind the end with a scrap of fabric.