

### 136 Bolero

Sizes 44, 46, 48, 50, 52

Back length approx. 36 cm (14 ins)

3/4 – sleeves, approx. 45 cm (18 ins) long

### Materials

**Note:** This bolero is sewn from lace fabric with two different scalloped edges. The lower edges of the bolero are the scalloped edges of the fabric (large scallops for front and back, small scallops for the sleeves). For the front and neck edges, strips are cut from the edge with small scallops and appliquéd to the bolero. If instead you find lace trim, approx. 3 cm (1 1/4 ins) wide, which matches your fabric, you will need only 1.60 m (1 3/4 yds) of fabric in the given width for the bolero. In this case, you will also need 1.40 – 1.45 – 1.50 – 1.55 – 1.60 m (1 5/8 – 1 3/4 – 1 3/4 – 1 3/4 – 1 3/4 yds) of the lace trim.

**Lace fabric with two different scalloped edges** (large and small scallops),  
width: 90 cm (36 ins)  
length: 2.50 m (23/4 yds) for all sizes.

Vilene Bias Tape/ stay tape.

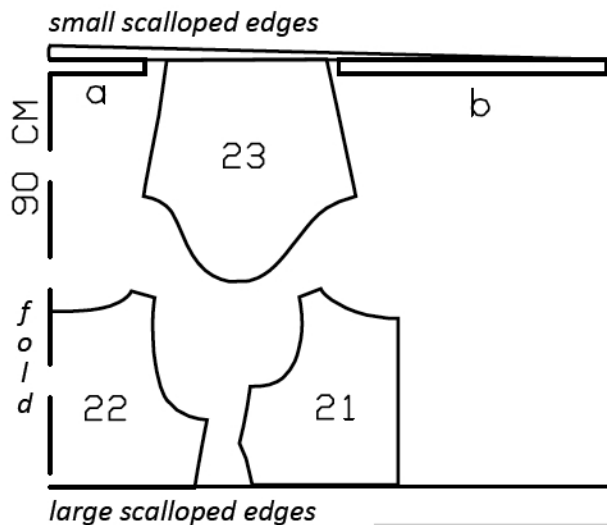
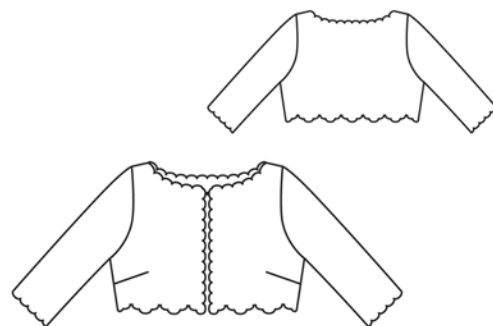
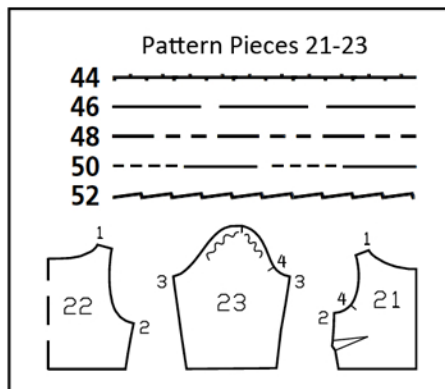
1 small flat button.

**Recommended fabrics:** Lace fabric with two scalloped edges.

### Preparations

Print the pattern out on letter or A4 sized paper. It is **very** important to not scale or fit any of the pages, you must print the document in **actual size**. Your pattern will print on multiple pages, which you will then tile together. Arrange the sheets on a large, hard and flat surface matching up the numbers and letters (i.e. 6A to 6A). Cut or fold one of the sides and match the edge to it's corresponding side. Then, tape down in place so paper is secure.

Trace the pattern pieces from the pattern sheet following the lines and markings for your size



Fold the fabric as shown in the pattern layout, right side facing in. Use fabric with a width of 90cm.

### Cutting Out

21 front 2x  
22 back, on a fold 1x  
23 sleeve 2x

Place lower edge of front and back pieces on edge of lace with large scallops and place lower sleeve edge on edge of lace with small scallops.

Draft the following pieces NOT included in the pattern:

Scalloped strip (small scallops) approx. 3 cm (1 1/4 ins) wide:  
a) for back neck edge, one strip, 37 – 38 – 39 – 39 – 40 cm (14 1/2 – 15 – 15 1/2 – 15 1/2 – 15 3/4 ins) long,

b) for front and front neck edges, two strips, 52 – 53 – 54 – 55 – 57 cm (20 1/2 – 21 – 21 1/4 – 21 3/4 – 22 1/2 ins) long.

**burda style magazine patterns do not have seam allowance included.**

Seam and hem allowance to be added: Seams and edges 1.5 cm (5/8 in).

## Sewing

**Vilene Bias Tape/ stay tape:** Iron to wrong side of armhole edges and front shoulder seam edges.

Lay scalloped edge strip on back neck edge so that scallops extend past marked neck edge and centre of one scallop lies at centre back. Baste scalloped strip in place with diagonal stitches. Machine stitch along inside edge of scallops, with small zigzag stitches. Carefully trim inside of scalloped strip close to zigzag stitching. Trim away allowance of neck edge which lies below scalloped strip, close to zigzag stitching. Appliqué scalloped strips to front and front neck edges in same manner. Position scallops so that corners of neck edge each lie between two scallops.

Stitch bust darts and press darts down. For larger sizes, trim dart allowances to 1 cm (3/8 in) wide and neaten edges.

Stitch side seams and shoulder seams, right sides together. Trim seam allowances to 7 mm (1/4 in) wide, neaten edges together, and press onto back.

Stitch sleeve seams, right sides together. Trim seam allowances, neaten edges together, and press to one side.

Set in sleeves, easing sleeve caps. Make sure to match top sleeve with shoulder seam and underarm points.

Work a thread loop on right front edge. Sew button to left front, to match loop.

