

139 Dress

Sizes 44, 46, 48, 50, 52

Length from waist 68 cm (26 3/4 ins)

Materials

Cotton satin (heavy),
width: 150 cm (59 ins)
length: 1.90 – 1.95 – 1.95 – 2.00 – 2.00 m
(2 1/8 – 2 1/4 – 2 1/4 – 2 1/4 – 2 1/4 yds).

Lining,
width: 140 cm (55 ins)
length: 1.25 – 1.25 – 1.30 – 1.30 – 2.10 m
(1 1/2 – 1 1/2 – 1 1/2 – 1 1/2 – 2 3/8 yds).

Vilene/Pellon G 785.

1 invisible zip, 60 cm (24 ins) long, and a special presser foot.

Recommended fabrics: Dress fabrics with some body. Fabrics with some elastane are ideal.

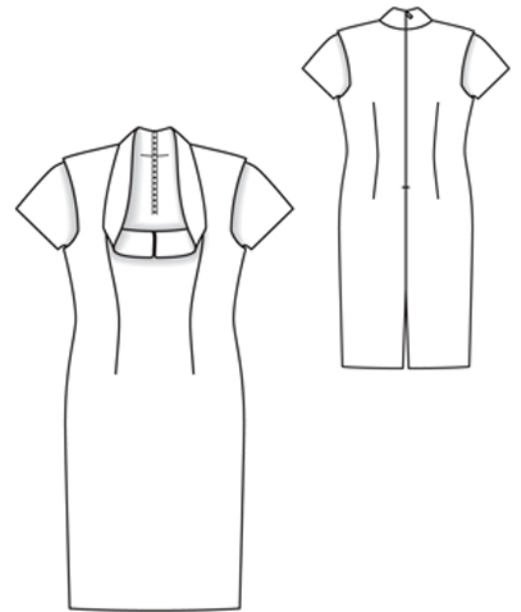
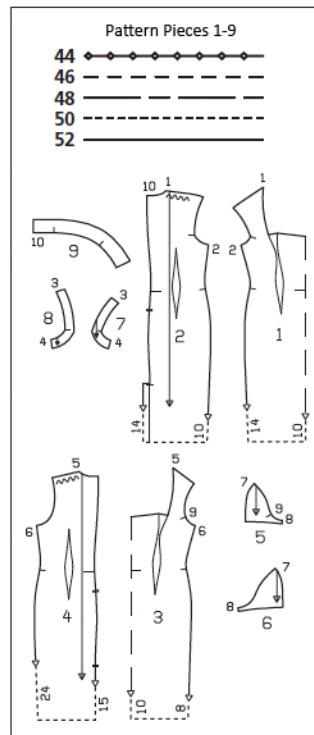
Preparations

Print the pattern out on letter or A4 sized paper. It is **very important** to not scale or fit any of the pages, you must print the document in **actual size**. Your pattern will print on multiple pages, which you will then tile together. Arrange the sheets on a large, hard and flat surface matching up the numbers and letters (i.e. 6A to 6A). Cut or fold one of the sides and match the edge to it's corresponding side. Then, tape down in place so paper is secure.

Trace the pattern pieces from the pattern sheet following the lines and markings for your size.

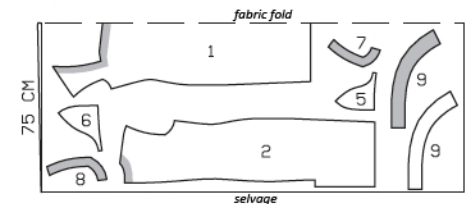
burda style magazine patterns do not have seam allowance included.

Seam and hem allowance to be added:
Seams and edges 1.5 cm (5/8 in),
hem 4 cm (1 5/8 ins),
sleeve hems 3 cm (1 1/4 ins).
Cut lining pieces with 1.5 cm (5/8 in) wide seam allowances and 3 cm (1 1/4 ins) wide hem allowances.

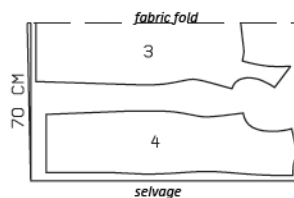


Cotton Satin
Sizes 44-52

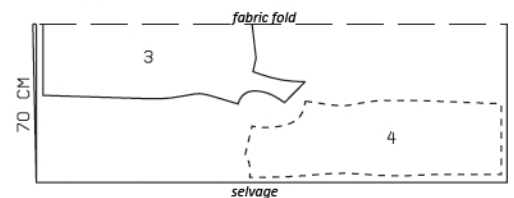
Cut pieces 1,2,5-9 on a double layer of cotton fabric (150cm wide).
Cut pieces 3 & 4 on a double layer of lining fabric (140cm wide).



Lining
Sizes 44-50



Size 52



Cutting Out

Cotton satin:

- | | |
|------------------------|----|
| 1 front, on a fold | 1x |
| 2 back | 2x |
| 5 sleeve front | 2x |
| 6 sleeve back | 2x |
| 7 front armhole facing | 2x |
| 8 back armhole facing | 2x |
| 9 collar | 4x |

Lining:

- | | |
|---------------------------------|----|
| 3 front lining piece, on a fold | 1x |
| 4 back lining piece | 2x |

Interfacing: See shaded area on pattern layout. Fuse interfacing to wrong side of fabric.

Sewing

On front piece, cut along centre of each dart, between marked lines, to approx. 4 cm (1 5/8 ins) before point. Trim dart allowances to 5 mm (3/16 in) wide. Stitch front darts, beginning exactly at neck edge. Press darts open, pressing points of darts flat.

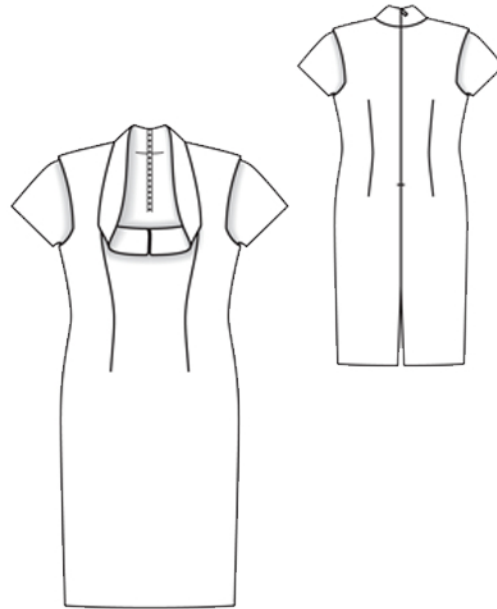
Stitch back darts and press toward centre back.

Stitch side seams and shoulder seams, right sides together. Press seam allowances open.

Stitch interfaced collar pieces to neck edges of back pieces, approx. 5 cm (2 ins) long, beginning at back edges (seam number 10). Clip seam allowances of collar at seam ends. Press seam allowances open. Sew invisible zipper to back slit edge, beginning at marked upper collar edge. Stitch centre back seam from vent to zipper. Press seam allowances open.

Pin each collar piece with no interfacing to interfaced collar piece, right sides together. At zipper slit, turn collar pieces with no interfacing back, approx. 5 mm (3/16 in) before slit edge, and pin to upper edge. Turn back slit allowances to outside and pin to upper edge, over collar pieces. Stitch along upper collar edges and front narrow edges. Trim seam allowances. Press allowances on slit edges to inside and turn collar right side out. Press edges. Sew back narrow edges of collar pieces with no interfacing to zipper tapes. Lay inside collar edge flat over attachment seams, not turned in. Beginning at seam end, stitch collar edges together to neck edge, clipping seam allowance of collar pieces into corners of neck. Narrow front collar edges meet at centre front.

On armhole facings, stitch shoulder seams and side seams. Neaten inside edges of facings. Stitch armhole facings to armhole edges, right sides together. Trim seam allowances and clip into corners. Turn facings to inside. Press edges. Sew inside edges of facings in place by hand.



On dress, press hem allowance to inside and sew in place by hand. Press back slit allowances to inside and sew to hem edge.

On lining front, stitch and press darts as described. Stitch centre back seam, back darts, side seams, and shoulder seams of lining, right sides together.

Stitch sleeve seams. Press sleeve hem allowances to inside and sew in place by hand. Sew sleeves to dress lining, with right side of each sleeve facing wrong side of lining. Press allowances of sleeve attachment seams away from sleeves front and back.

Pull lining over dress, with right sides facing. Pin to neck edge. Stitch lining to neck, in back stitching as close to zip as possible. The collar is caught in this seam. Trim seam allowances. Turn lining up and stitch to seam allowance, close to seam. Turn lining to inside. Press neck edge. Turn lining edges under and sew to zip tapes and to loose inside edge of collar.

Hem lining so that it is approx. 2 cm (3/4 in) shorter than dress. At top of walking vent, pin lining in place. Trim lining to 2 cm (3/4 in) before inside edge of vent allowances and trim horizontally across top of vent. Clip approx. 1 cm (3/8 in) diagonally into top corners. Turn lining edges under and sew to vent allowances.

Work from underside of collar to sew narrow edges together by hand. At centre front, turn collar down and sew underside of collar to front, approx. 3 cm (1 1/4 ins) from front darts, with a few stitches by hand.



These special zippers come in various lengths. The zipper should be at least 2 cm (3/4 in) longer than the slit. It is sewn in place before the seam below the slit is stitched. A special presser foot is required to sew the zipper in place.

Sewing the zipper in place:

Open the zipper and push the coil back with your thumbnail to reveal the seam marking between the tape and the coil. Place the open zipper right side down on the right fabric side of one slit edge.

In order to stitch the zipper in place exactly along the marked seam line, you must first calculate the distance between the tape edge and the fabric edge as follows: width of seam allowance minus 1 cm (3/8 in) tape width = distance from edge of fabric. This will yield a value of 5 mm (3/16 in) if the width of the seam allowance is 1.5 cm (5/8 in).

Pin the top end of the zipper tape in place, the calculated distance from the edge of the fabric. The bottom end of the zipper will extend past the marked end of the slit. Place the presser foot on the zipper so that the coil is in the notch to the right of the needle (1). Stitch zipper in place, from the top to the marked end of the slit. Close zipper.

Place the other zipper tape face down on the opposite slit edge and pin in place at the top. Open zipper again. Place the presser foot on the top end of the zipper so that the coil is in the notch to the left of the needle (2). Sew the zipper in place, from the top to the end of the slit. Close zipper.

Now stitch the seam below the zipper, from bottom to top. Turn the loose lower end of the zipper out of the way, over the seam allowance. Stitch as close as possible to the last stitches of the zipper seams. Trim away excess zipper and bind the end with a scrap of fabric.