

### 138 Skirt

Sizes 44, 46, 48, 50, 52

Skirt length 96 cm (37 3/4 ins)

### Materials

#### Silk twill,

width: 140 cm (55 ins)

length: sizes 44, 46, 48: 2.95 m (3 3/8 yds),

size 50: 3.05 m (3 1/2 yds),

size 52: 3.10 m (3 1/2 yds).

0.50 m (5/8 yd) Vilene/Pellon G 785, 90 cm (36 ins) wide.

Vilene Bias Tape/stay tape.

1 invisible zipper, 22 cm (9 ins) long, and a special presser foot.

**Recommended fabrics:** Lightweight skirt fabrics. Fabrics with two 'good' sides are ideal.

### Preparations

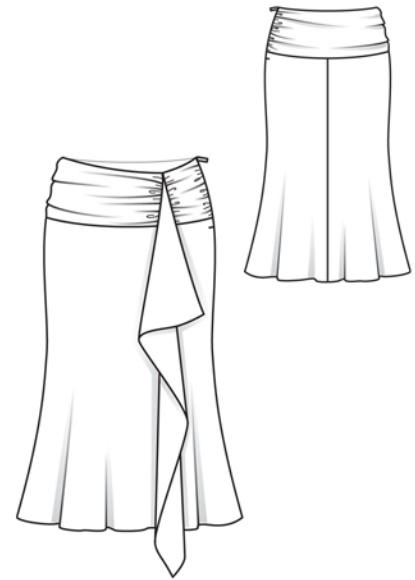
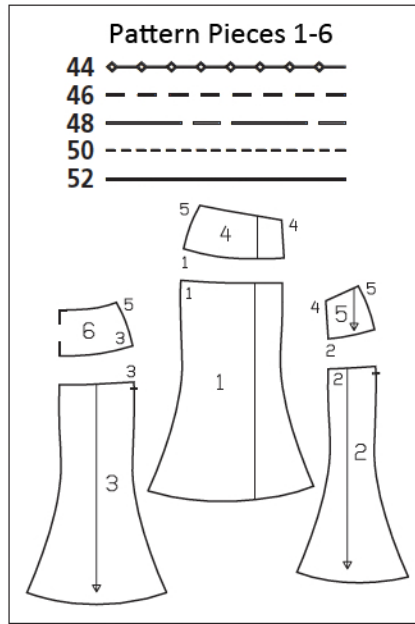
Print the pattern out on letter or A4 sized paper. It is **very** important to not scale or fit any of the pages, you must print the document in **actual size**. Your pattern will print on multiple pages, which you will then tile together. Arrange the sheets on a large, hard and flat surface matching up the numbers and letters (i.e. 6A to 6A). Cut or fold one of the sides and match the edge to it's corresponding side. Then, tape down in place so paper is secure.

Trace the pattern pieces from the pattern sheet following the lines and markings for your size.

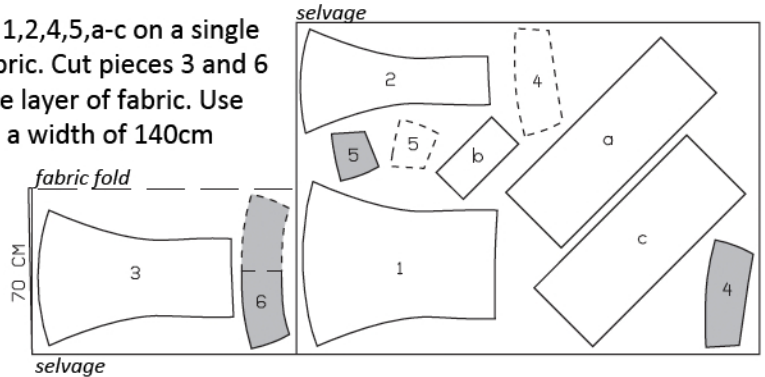
**burda style magazine patterns do not have seam allowance included.**

Seam and hem allowance to be added:

Use a ruler and tailor's chalk to mark allowances around each paper pattern piece: 1.5 cm (5/8 in) wide seam and hem allowances. No allowances on narrow edges and one long edge of flounce.



Cut pieces 1,2,4,5,a-c on a single layer of fabric. Cut pieces 3 and 6 on a double layer of fabric. Use fabric with a width of 140cm



### Cutting Out

#### Silk twill,

1 right front skirt panel 1x

2 left front skirt panel 1x

3 back skirt panel 2x

4 right front yoke 2x

5 left front yoke 2x

6 back yoke, on a fold 2x

b) left front draped piece, cut on bias:

size 44: 13 cm (5 1/4 ins);

size 46: 13.5 cm (5 3/8 ins);

size 48: 14.5 cm (5 3/4 ins);

size 50: 15 cm (6 ins);

size 52: 16 cm (6 3/8 ins) long,

all 33 cm (13 ins) wide,

Draft the following pieces NOT included in the pattern:

a) right front and back draped piece, cut on bias:

size 44: 73 cm (28 3/4 ins);

size 46: 76 cm (30 ins);

size 48: 82 cm (32 1/2 ins);

size 50: 87 cm (34 1/4 ins);

size 52: 92 cm (36 1/4 ins) long,

all 33 cm (13 ins) wide,

c) flounce, cut on bias:

35 cm (13 3/4 ins) wide,

91 cm (36 ins) long.

### Cutting Out Continued...

#### Interfacing

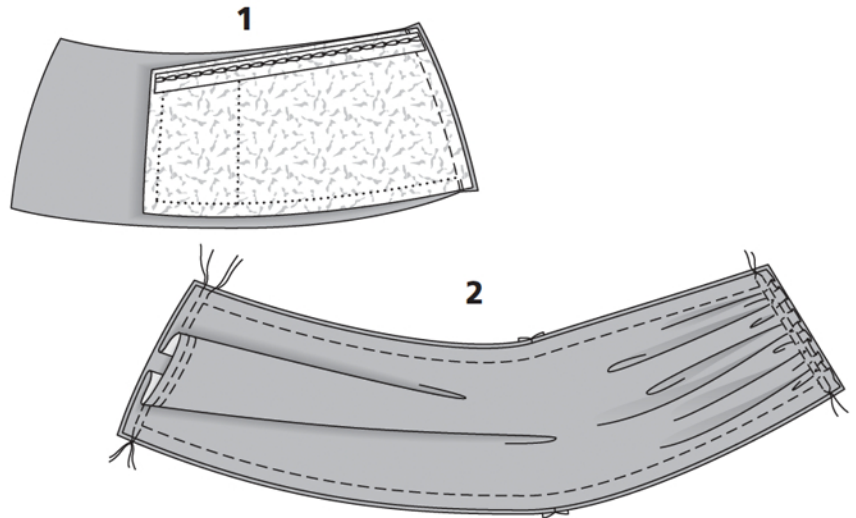
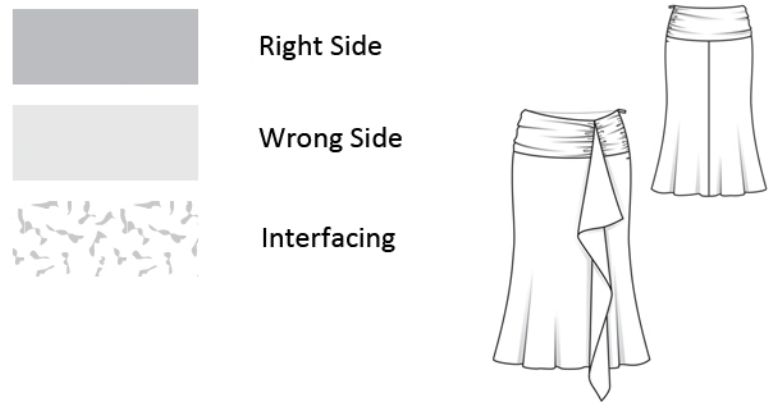
See shaded area on pattern layout. Iron interfacing to wrong side of outer yoke pieces.

#### Transfer pattern lines to the fabric:

Fold back yoke pieces along centre back, with right sides facing in. Pin the paper pattern piece in place again. Transfer pattern piece outlines (seam and hem lines) and all other lines and markings on the pattern pieces, except the grain lines, to wrong side of fabric, with a tracing wheel and Burda dressmaker's carbon paper (see detailed instructions included with the carbon paper). Mark slit by making small clips into seam allowance, 5 mm (3/16 in) long clips are sufficient.

#### Vilene Bias Tape/stay tape

Iron Bias Tape/stay tape to wrong side of upper edge of interfaced yoke pieces so that chain stitch lies on yoke, close to marked seam line.



### Sewing

Place right sides of fabric together to baste and stitch. Secure start and end of seams by back-stitching.

#### Centre back seam:

Lay back skirt pieces together, right sides facing. Pin centre back seam. Stitch. Neaten seam allowances together and press to one side.

#### Right side seam:

Lay right front skirt piece (piece 1) on right back skirt half, right sides facing. Pin right side seam. Stitch. Press seam open and neaten edges of allowances.

#### Interfaced (outer) yoke pieces and draped pieces:

Lay right front yoke on right back yoke half, right sides facing. Pin right side seam. Stitch (image 1). Press seam allowances open.

#### Gather side edges of draped pieces:

Machine baste (longest stitch setting) 1.2 cm (1/2 in) from each fabric edge. Stitch again 5 mm (3/16 in) from first line of stitching.

Lay each draped piece on corresponding interfaced yoke piece, with wrong side facing right side. Baste together along upper and lower edges. Hold bobbin threads of gathering stitches and slide narrow edges of draped pieces together along the threads until they match the yoke edges. Knot the gathering threads. Distribute gathering evenly. Baste side edges of draped pieces to yoke pieces (image 2). Treat yokes and draped pieces as one layer of fabric from now on.

## Sewing Continued...

Pin each yoke piece to corresponding upper skirt edge, right sides facing. Stitch (image 3). Press seam allowances toward yokes.

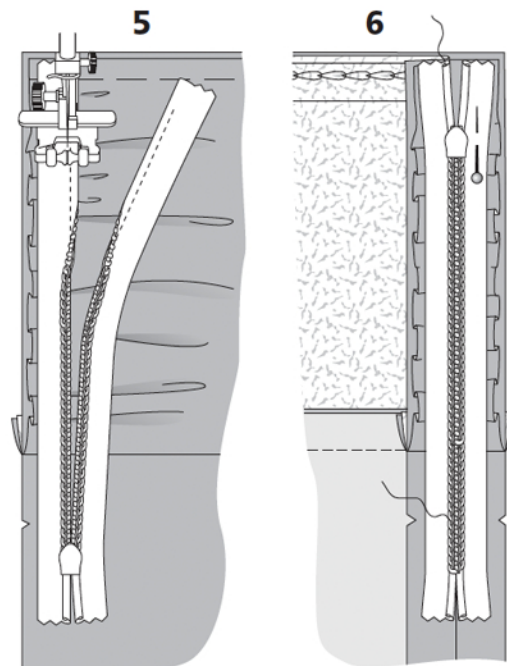
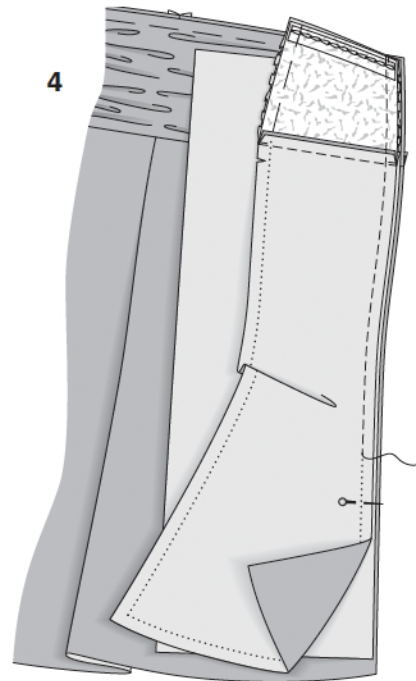
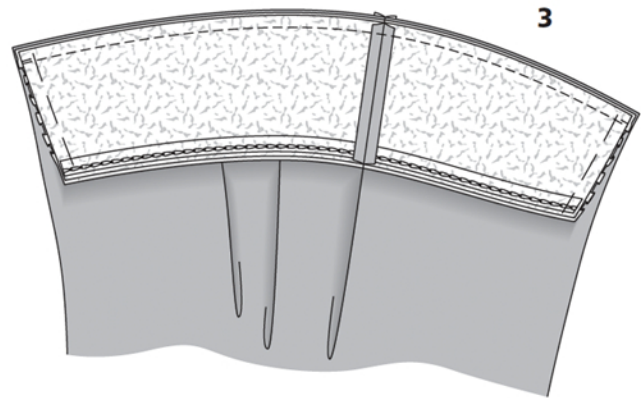
### Flounce, front section seam:

Pin flounce to section seam edge of right front skirt piece and right front yoke, right sides facing. Allowances of skirt extend past upper and lower flounce edges. Lay left front skirt piece on right front skirt piece, right sides facing. Pin section seam edges together. Stitch seam (image 4), thereby catching the flounce. Neaten edges of seam allowances together and press allowances toward centre front.

### Invisible zipper, left side seam:

Open the zipper. Push the coil back with your thumbnail to reveal the seam line between the zip tape and the coil. Place the open zipper face down on the right fabric side of the back slit edge. In order to stitch the zipper in place exactly along the marked seam line, you must first calculate the distance between the edge of the zip tape and the edge of the fabric as follows:  
Width of seam allowance minus 1 cm (3/8 in) band width = distance from edge of fabric.  
This will result in 5 mm (1/4 in) if the width of the seam allowance is 1.5 cm (5/8 in).

Pin the top end of zipper tape in place the calculated distance from the edge of the fabric. The teeth of the zipper begin at the marked upper yoke edge. The bottom end of the zipper will extend past the marked end of the slit. Place the presser foot on the zipper, with the coil in the notch to the right of the needle (image 5). Stitch the zipper in place, from the top to the marked end of the slit. Close the zipper. Place the second zip tape face down on slit edge of front skirt piece and pin the top to the yoke (image 6).



## Sewing Continued...

Open zipper again. Place the presser foot on the top end of the zip so that the coil is in the notch to the left of the needle. Sew the zipper in place from the top to the end of the slit (image 7), then close zipper. Below the zipper, lay the skirt pieces together, right sides facing. Pin the left side seam from the lower edge to the slit mark, turning the loose lower end of zip out of the way, over the seam allowance. Attach your machine's one-sided edge foot to stitch the seam, stitching as close to the last stitch of the zip seams as possible (image 8). Press seam open and neaten edges of allowances.

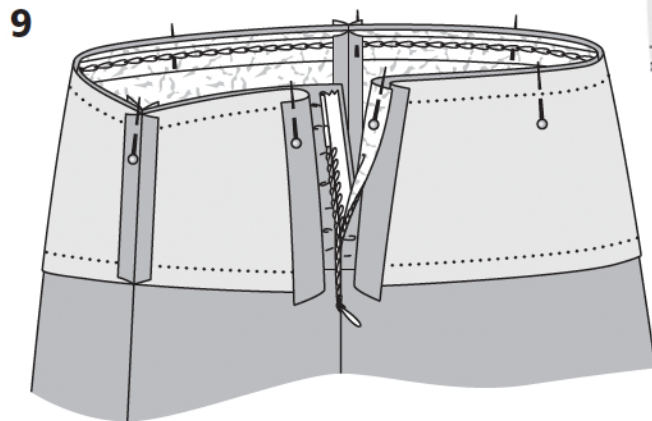
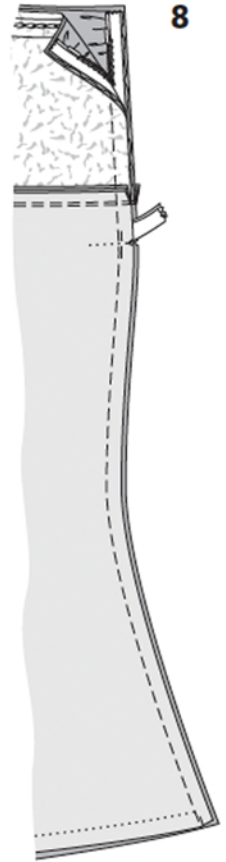
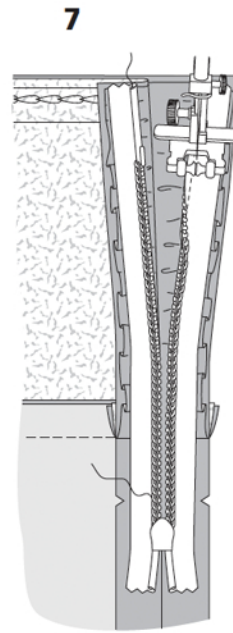
### Double the yoke:

Lay front yoke pieces with no interfacing (= inside yoke pieces) right sides together. Stitch section seam. Lay front yoke on back yoke, right sides facing. Stitch right side seam (as mirror image of skirt seam). Press seam allowances open.

Lay inside yoke on attached outer yoke, right sides facing. Pin upper yoke edges together, matching right side seams and matching front section seams. Fold side yoke edges to outside, approx. 5 mm (3/16 in) before marked seam line, and pin to upper edge. On skirt, turn slit allowances with zipper to outside and pin to upper edge, over inside yoke (image 9). Stitch along upper yoke edge. Trim seam allowances. Turn allowances on slit edges to inside. Turn inside yoke up and stitch to seam allowances, close to seam, stitching as close to zip slit as possible. Turn yoke to inside and press upper edge. Turn yoke edges under and sew to zip tapes. Pin inside yoke edge over joiyoke attachment seam (image 10). Work from outer side of skirt to stitch exactly along line of yoke attachment seam, thereby catching inside yoke.

### Hem:

Finish lower edge of skirt. Press hem allowance to inside and stitch in place.

**10**