

137 Blouse

Sizes 44, 46, 48, 50, 52

Back length approx. 70 cm (27 3/4 ins)

Materials

Poplin,

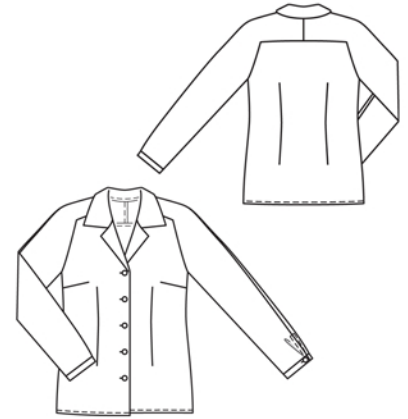
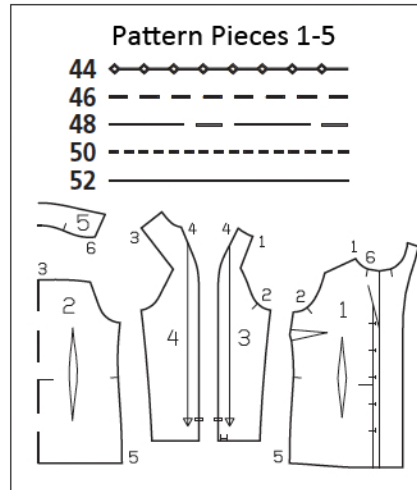
width: 140 cm (55 ins)

length: 1.80 – 1.80 – 1.85 – 1.85 – 2.20 m
(2 – 2 – 2 1/8 – 2 1/8 – 2 1/2 yds).

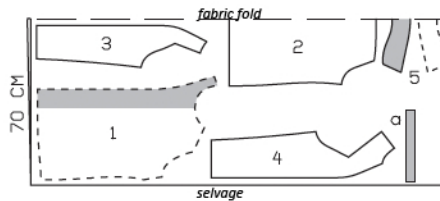
Vilene/Pellon G 785. 6 buttons.

Recommended fabrics:

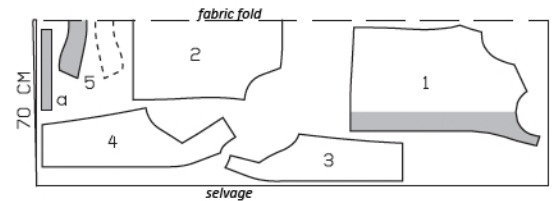
Blouse fabrics with some body.



Sizes 44-50



Size 52



Cut pieces 1-5 on a double layer of fabric. Use fabric with a width of 140cm.

Preparations

Print the pattern out on letter or A4 sized paper. It is **very** important to not scale or fit any of the pages, you must print the document in **actual size**. Your pattern will print on multiple pages, which you will then tile together. Arrange the sheets on a large, hard and flat surface matching up the numbers and letters (i.e. 6A to 6A). Cut or fold one of the sides and match the edge to it's corresponding side. Then, tape down in place so paper is secure.

Trace the pattern pieces from the pattern sheet following the lines and markings for your size.

burda style magazine patterns do not have seam allowance included.

Seam and hem allowance to be added:
Seams, edges, and hem 1.5 cm (5/8 in).

Cutting Out

| | |
|--------------------------|----|
| 1 front | 2x |
| 2 back, on a fold | 1x |
| 3 sleeve front with yoke | 2x |
| 4 sleeve back with yoke | 2x |
| 5 collar, on a fold | 2x |

Draft the following piece NOT included in the pattern:

a) 2 sleeve bands with 2 cm (3/4 in) underlap,
30 – 30.5 – 31.5 – 32.5 – 34 cm
(12 – 12 1/8 – 12 1/2 – 12 7/8 – 13 1/2 ins) long,
4 cm (1 1/2 ins) wide, finished width 2 cm (3/4 in).

Interfacing: See shaded area on pattern layout. Iron interfacing to under collar piece.

Sewing

Stitch darts in blouse front and back. Press vertical darts toward centre and press bust darts downward.

Stitch centre seam of back yoke, right sides together. Neaten seam allowances together and press to one side. Stitch cut-on yokes of sleeve fronts to fronts, from seam number 1 to corner. Clip seam allowance of front yokes into corners. Then stitch sleeve fronts to front armhole edges. Stitch back yoke to back, from corner to corner. Clip seam allowance of yoke into corners. Then stitch sleeve backs to back armhole edges. Press seam allowances onto yokes and sleeves.

Stitch shoulder seams and upper sleeve seams as continuous seams (neckline to sleeve hem), up to slit mark. Press seam allowances toward front. Press allowances on slit edges to inside. Above each slit, press allowance of sleeve back toward the front, tapering the allowance (do not clip). Turn under edges of allowances on slit edges and stitch in place, stitch horizontally across ends of slits.

Stitch side seams and lower sleeve seams as continuous seams, matching underarm points. Fold pleats in lower sleeve edges in direction of arrows indicated on pattern and baste down in place.

On inside facing edges, trim allowances to 7 mm (1/4 in) wide, neaten, press to inside, and stitch. Press hem allowance to inside, turn raw edge under, and stitch.



Turn self-facings to outside and stitch to neck edge, from front edge (fold) to seam mark. Stitch collar pieces together along outer edges, right sides facing, beginning and ending exactly at seam line on attachment edge. Turn collar right side out and press. Lay collar between blouse and facing. Stitch undercollar to neck edge of blouse and stitch top collar to facing. Press allowances of collar joining seams open. Turn facings to inside. Pin collar joining seams together exactly. Sew seam allowances together, close to seam. In back, lay inside edge of top collar flat over attachment seam and pin in place. Stitch from right side, along line of seam. Sew facings to hem edge and to shoulder seams.

Stitch each sleeve band to lower sleeve edge, with underlap extending at back slit edge. Press seam allowances of joining seams and of opposite long sleeve band edges onto sleeve bands. Fold sleeve bands lengthwise, right side facing in. Stitch across ends. Turn right side out. Baste inside edges in place. Baste upper underlap edges together. Work from right side to topstitch each sleeve band close to attachment seam and close to upper underlap edge.

Work buttonholes in right front as marked. Work one buttonhole in front end of each sleeve band.