

### 135 Dress

Sizes 44, 46, 48, 50, 52

Length from waist 62 cm (24 1/2 ins)

### Materials

**Dotted jacquard,**

width: 140 cm (55 ins)

length: 1.55 – 1.55 – 1.60 – 2.00 – 2.00 m

(1 3/4 – 1 3/4 – 1 3/4 – 2 1/4 – 2 1/4 yds).

A piece of lining fabric, approx. 50 x 25 cm (20 x 10 ins), for the sleeve facings.

Vilene/Pellon G 785.

1 invisible zip, 60 cm (24 ins) long, and a special presser foot.

**Recommended fabrics:** Dress fabrics with some body.

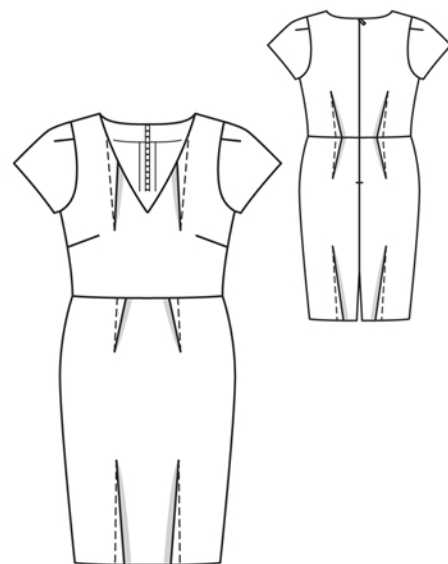
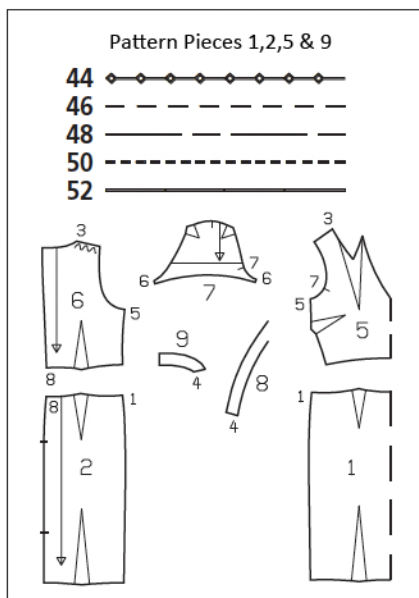
### Preparations

Print the pattern out on letter or A4 sized paper. It is **very** important to not scale or fit any of the pages, you must print the document in **actual size**. Your pattern will print on multiple pages, which you will then tile together. Arrange the sheets on a large, hard and flat surface matching up the numbers and letters (i.e. 6A to 6A). Cut or fold one of the sides and match the edge to it's corresponding side. Then, tape down in place so paper is secure.

Trace the pattern pieces from the pattern sheet following the lines and markings for the correct size and the correct style (135). This pattern also includes pattern pieces, lines and markings for style 134 that should be ignored. Trace sleeve facings as separate pattern pieces.

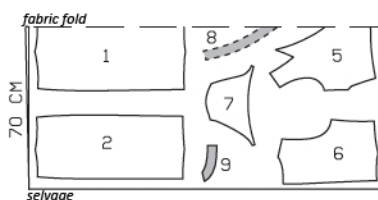
**burda style magazine patterns do not have seam allowance included.**

Seam and hem allowance to be added:  
1.5 cm (5/8 in), vent 4 cm (15/8 ins),  
hem 5 cm (2 ins).

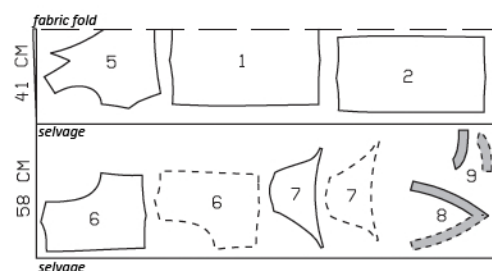


Cut pieces 1,2,5 & 9 on a double layer of fabric. Use fabric with a width of 140 cm.

Sizes 44-48



Sizes 50 & 52



### Cutting Out

**Jacquard:**

1 front skirt panel, on a fold	1x
2 back skirt panel	2x
5 front, on a fold	1x
6 back	2x
7 sleeve	2x
8 front neck facing, on a fold	1x
9 back neck facing	2x

**Lining:**

7 sleeve facing	2x
-----------------	----

**Interfacing:** See shaded area on pattern layout.

## Sewing

Stitch bust darts in front and press darts down. Work from right side to stitch all other darts (except sleeve darts).

**Darts:** First fold hem allowance to outside and transfer lines of lower darts to hem allowance. Fold hem allowance down again. Hand baste along all dart lines to make them visible on right side of the fabric. Stitch darts from right side, e. g. wrong fabric side faces in when stitching. Press darts toward centre front or centre back and baste to upper and lower edge of skirt pieces. Remove basting threads.

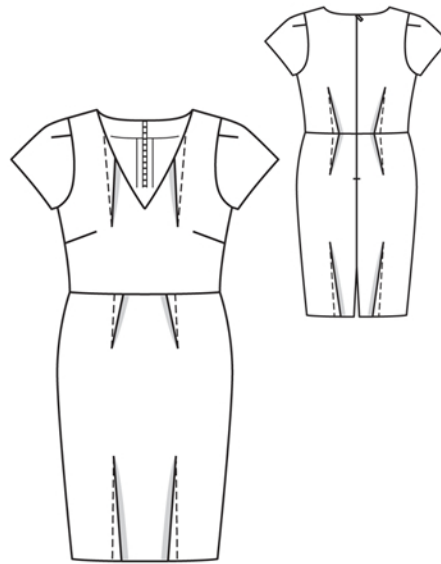
Stitch shoulder seams and side seams of skirt and dress bodice, right sides together. Press all seam allowances open.

Stitch skirt to dress bodice along waistline, right sides together. Press seam allowances open.

Sew invisible zipper to back edges. Stitch centre back seam from vent to zipper. Press seam allowances open and press allowances on vent edges to inside.

Stitch shoulder seams on neck facing.

**Neck:** Pin facing to neck edge of dress, right sides together. At zipper slit, turn facing back, approx. 5 mm (3/16 in) before slit edge and pin to upper edge. Turn allowances on slit edges of dress to outside and pin to neck, over facing. Stitch along neck edge. Trim seam allowances and clip into V of neck. Turn allowances on slit edges to inside. Turn facing up and stitch to seam allowances, as far as possible, close to seam. Turn facing to inside. Sew to zipper tapes and to shoulder seams.



Stitch darts in sleeves (like bust darts), right sides together. Press front darts toward front and press back darts toward back. Stitch sleeve facings to lower sleeve edges, right sides together. Turn facings down and stitch to seam allowances, close to seams. Stitch sleeve seams and facing seams as continuous seams. Turn facings to inside. Baste narrow edges in place. Sew inside edges in place by hand.

Set in sleeves, making sure to match up top sleeve with shoulder seams and underarms points.

At hem edge, open allowances on vent edges again. Press hem allowance to inside and sew in place by hand. Sew vent allowances to hem allowance.