

112 Dress

Sizes **38, 40, 42, 44, 46**

Length from waist 64 cm (25 1/4 ins)

Materials

Crêpe satin with widthwise stretch,
width: 140 cm (55 ins)
length: 2.25 – 2.25 – 2.30 – 2.30 – 2.30 m (2 5/8 yds)

Crêpe chiffon,
width: 140 cm (55 ins) for all sizes
length,
brown: 0.70 m (7/8 yd) **blue:** 0.65 m (7/8 yd)

Vilene/Pellon G 785.

Vilene Bias Tape/stay tape.

3 sew-on snap fasteners.

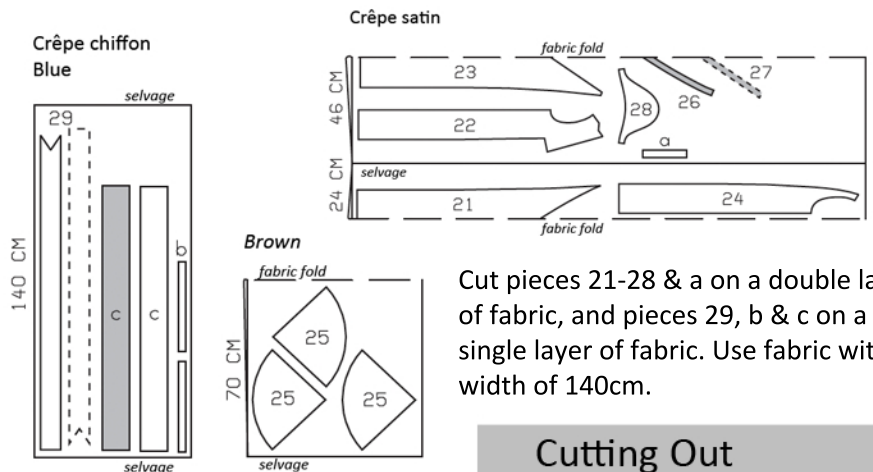
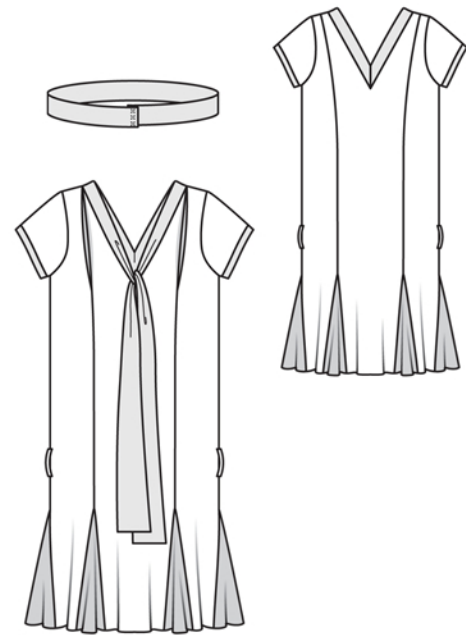
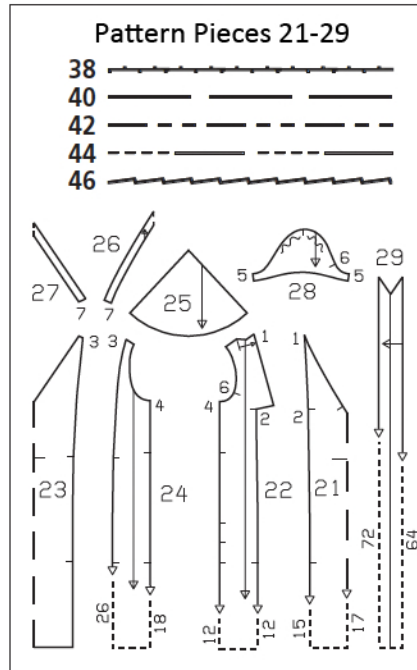
Recommended fabrics: Lightweight, softly draping dress fabrics, with or without elastane.

Preparations

Print the pattern out on letter or A4 sized paper. It is **very** important to not scale or fit any of the pages, you must print the document in **actual size**. Your pattern will print on multiple pages, which you will then tile together. Arrange the sheets on a large, hard and flat surface matching up the numbers and letters (i.e. 6A to 6A). Cut or fold one of the sides and match the edge to it's corresponding side. Then, tape down in place so paper is secure.

Trace the pattern pieces from the pattern sheet following the lines and markings for your correct size.

The pleat arrow marked on piece 22 is for size 38. For the other sizes, mark the pleat arrow according to the size lines.



Cut pieces 21-28 & a on a double layer of fabric, and pieces 29, b & c on a single layer of fabric. Use fabric with a width of 140cm.

Cutting Out

Crêpe satin:	
21 centre front, on a fold	1x
22 side front	2x
23 centre back, on a fold	1x
24 side back	2x
26 front neck facing, on a fold	1x
27 back neck facing, on a fold	1x
28 sleeve	2x

Draft the following piece NOT included in the pattern:

a) strip for 2 belt carriers, 18 cm (7 ins) long, 3 cm (1 1/4 ins) wide (incl. allowances).

burda style magazine patterns do not have seam allowance included.

Seam and hem allowance to be added:

Seams and edges 1.5 cm (5/8 in), no allowances on lower edges of front, back and godet pieces, no allowances on long edges of neck and sleeve bands, sleeve hems 1 cm (3/8 in).

Note: On this dress, the lower edge remains unhemmed. If you prefer to hem the dress, cut the dress pieces with 4 cm (1 5/8 in) wide hem allowances and the godets with 1 cm (3/8 in) wide hem allowances.

Cutting Out Continued...

Brown chiffon:
25 godet 6x

Blue chiffon:
29 neck band with tie band 2x

Draft the following pieces NOT included in the pattern:

b) 2 sleeve bands,
32.5 – 34 – 35.5 – 37 – 38.5 cm
(12 7/8 – 13 1/2 – 14 – 14 1/2 – 15 1/4 ins) long,
3 cm (1 1/4 ins) wide,

c) 2 belt pieces,
105 – 109 – 114 – 118 – 122 cm
(41 1/2 – 43 – 45 – 46 1/2 – 48 ins) long,
11 cm (4 1/2 ins) wide, finished width 5.5 cm (2 1/4 ins).

Interfacing (G 785): See shaded area on pattern layout. Iron Vilene Bias Tape/stay tape to wrong side of armhole edges.

Sewing

Stitch centre front to side front pieces, from seam number 1 to seam mark. Press seam allowances onto side fronts. Stitch centre front to side front pieces from seam mark (seam number 2) to bottom seam mark. Press seam allowances open. Work from inside and begin at upper edge to stitch each pleat, 4 cm (1 5/8 ins) long. Lay pleats in direction of arrows, press to the length of the seam, and baste to upper edge. Stitch narrow bottom ends of pleats closed.

Stitch back section seams, from seam number 3 to bottom seam mark. Stitch side seams down to bottom seam mark. Stitch shoulder seams on dress and on facing.

Stitch neck facing to neck edge, right sides together and trim allowances. Clip allowances close to seam at centre front and centre back. Turn facing up and stitch to seam allowances, close to seam. Turn facing to inside and sew to shoulder seams.

Stitch centre back seam of neck band. Clip seam allowances at point of neck. Press seam allowances open. Fold band on fold line, wrong side facing in. Do not press band. Lay band edges together on neck edge, 5 mm (3/16 in) wide, beginning at centre back. Stitch in place 3 mm (1/8 in) from edge, ending stitching at seam mark on front.

Stitch sleeve seams, right sides together. Press sleeve hem allowances to inside. Stitch ends of each sleeve band together. Fold bands in half lengthwise, wrong side facing in, and press. Lay bands on lower sleeve edges, 5 mm (3/16 in) wide, and stitch in place, 3 mm (1/8 in) from edge.

Set in sleeves, easing sleeve caps. Make sure to match up underarm points and top sleeve with shoulder seam.

Stitch godets to open seam edges of front and back pieces. Start at one edge and stitch towards point. Pivot at point and stitch down other side of godet.

Fold strip for belt carriers lengthwise, right side facing in. Stitch 5 mm (3/16 in) from fold edge. Turn right side out. Cut into 2 pieces. Pin belt carriers over side seams as marked, turn ends in, and edgestitch ends in place.

Belt: Baste belt piece with no interfacing to interfaced belt piece, with wrong side facing right side. Treat as one layer of fabric from now on. Fold belt lengthwise, right side facing in. Stitch edges together, leaving a section of seam open, for turning. Turn belt right side out. Sew opening closed. Fasten belt with snaps.

