

### 111 Dress

Sizes **36, 38, 40, 42, 44**

Length from waist 62 cm (24 1/2 ins)

7/8-sleeves, approx. 48 cm (19 ins) long

### Materials

#### Poplin,

width: 150 cm (59 ins)

length,

**blue:** 1.20 – 1.20 – 1.30 – 1.30 – 1.30 m

(1 3/8 – 1 3/8 – 1 1/2 – 1 1/2 – 1 1/2 yds)

**yellow:** 1.00 – 1.50 – 1.50 – 1.50 – 1.50 m

(1 1/8 – 1 3/4 – 1 3/4 – 1 3/4 – 1 3/4 yds)

Vilene/ Pellon G 785.

Vilene Bias Tape/stay tape.

Twill band, width: 4 cm (1 5/8 ins)

length: 11.50 – 12.00 – 12.50 – 13.00 – 13.50 m

(12 3/4 – 13 1/4 – 13 3/4 – 14 3/8 – 14 7/8 yds).

8 large sew-on snap fasteners.

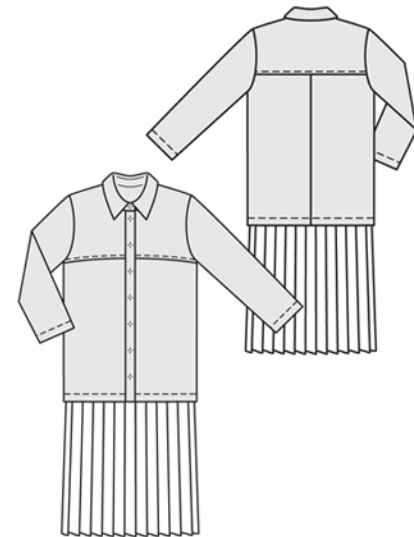
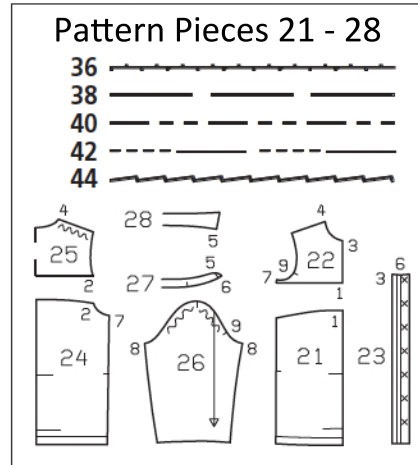
A small piece of lining fabric to cover the snap fasteners.

**Recommended fabrics:** Lightweight dress fabrics with some body. For long-lasting pleats, use fabric with a high synthetic content for the pleated skirt.

### Preparations

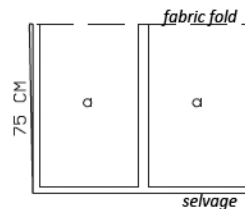
Print the pattern out on letter or A4 sized paper. It is **very** important to not scale or fit any of the pages, you must print the document in **actual size**. Your pattern will print on multiple pages, which you will then tile together. Arrange the sheets on a large, hard and flat surface matching up the numbers and letters (i.e. 6A to 6A). Cut or fold one of the sides and match the edge to it's corresponding side. Then, tape down in place so paper is secure.

Trace the pattern pieces from the pattern sheet following the lines and markings for the correct size and the correct style (111). This pattern also includes pattern pieces, lines and markings for style 110 that should be ignored.

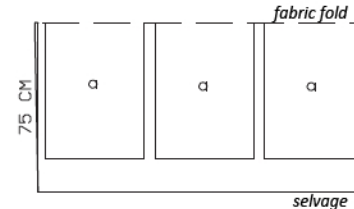


Cut pieces 21 - 28 & a on a double layer of fabric. Use fabric with a width of 150 cm.

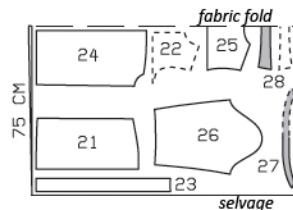
Yellow  
Size 36



Sizes 38-44



Blue  
Sizes 36-44



### Cutting Out

Blue fabric:

- 21 front 2x
- 22 front yoke 2x
- 23 front band 2x
- 24 back 2x
- 25 back yoke, on a fold 1x
- 26 sleeve 2x
- 27 collar stand, on a fold 2x
- 28 collar, on a fold 2x

Yellow fabric:

Draft the following piece NOT included in the pattern:

- a) skirt panels, 44 cm (17 1/4 ins) long, size 36: 2x 150 cm (59 ins) wide, sizes 38 – 44: 3x 120 cm (47 1/4 ins) wide.

**Interfacing:** See shaded area on pattern layout. Iron interfacing to under collar piece.

The snap fasteners marked on piece 23 are for size 36. For the other sizes, mark the top snap the same distance from upper edge as for size 36. The bottom snap is the same for all sizes. Space the other snaps evenly in between.

**burda style magazine patterns do not have seam allowance included.**

Seam and hem allowance to be added:

Seams and edges 1.5 cm (5/8 in), hem on skirt panels 3 cm (1 1/4 ins), sleeve hems 5 cm (2 ins) (flare sleeve hem allowance).

## Sewing

### Pleating:

On each skirt piece, press hem allowance to inside and sew. Have skirt pieces pleated commercially: triple pleats, pleat width 4 cm (1 5/8 ins). The width measurements of the skirt pieces are generous enough to allow the pleated skirt pieces to be stitched together inside a pleat fold.

Stitch centre back seam, right sides together. Press seam allowances open.

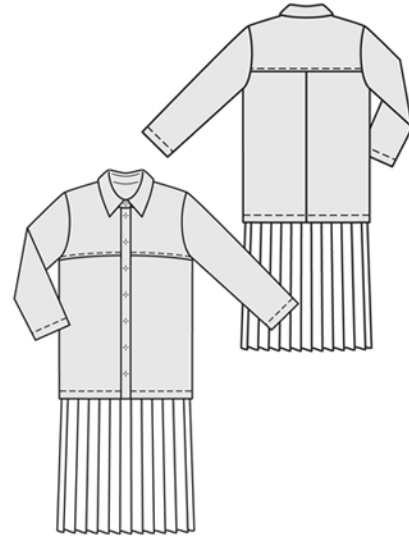
Stitch yokes to fronts and to back (seam numbers 1 and 2), right sides together. Press seam allowances onto yokes. Topstitch yokes 7 mm (1/4 in) from joining seams.

On dress bodice, stitch side seams and shoulder seams, right sides together. Press seam allowances open.

Turn lower edge of dress bodice to inside on fold line, baste, and press.

**Front bands:** Stitch front bands to vertical edges of front pieces. Press seam allowances of band joining seams and of other long edges of bands onto bands. Fold bands on fold line, right side facing in. Stitch across bottom ends. Turn bands right side out. Baste inside edges in place. Topstitch bands close to joining seams and front edges.

**Collar with collar stand:** Stitch collar pieces right sides together along outer edges. Trim seam allowances. Turn collar right side out and press. Lay collar stand pieces right sides together, catching collar in between. Stitch along front and upper collar stand edges, beginning and ending in front, exactly at seam line on joining edge. Turn collar stand right side out. Stitch outer collar stand piece to neck edge. Press seam allowances onto collar stand. Turn edge of inside collar stand under and baste over joining seam. Topstitch collar stand close to all edges.



Stitch sleeve seams. Turn sleeve hem allowances to inside, turn half in, and stitch. Set in sleeves into bodice easing sleeve caps. Make sure to match up underarm points and top sleeve with shoulder seam.

Cover the snap fastener halves with lining fabric. Sew top halves of snaps to inside of right front band as marked. Take even stitches and exit needle on right side of fabric. Sew a top half of a snap to inside right end of collar stand. Sew bottom halves of snaps to left band and to left end of collar stand, to match. Fasten the right band to the left band. Baste the bottom band ends together, approx. 5 cm (2 ins) long.

Stitch pleated skirt pieces together – the seam should lie within a pleat fold. On the skirt, count 24 – 25 – 26 – 27 – 28 pleats and stitch the last skirt seam inside the pleat fold. Trim remaining fabric to a seam allowance width of 1.5 cm (5/8 in). Turn bottom ends of seam allowances each in at an angle and sew together.

Cut twill tape into 24 – 25 – 26 – 27 – 28 pieces, each 47 cm (18 1/2 ins) long. Press one end of each piece to wrong side, 1.5 cm (5/8 in) wide. Pull pleats of skirt out flat. Lay twill tape on visible side of each pleat and pin so that one edge of twill tape meets pleat fold and pressed-under edge of tape meets hem edge. First edgestitch the tape edge which lies toward inside fold in place. Then fold skirt at outer pleat fold again, wrong side facing in, and edgestitch remaining edge of tape to the folded fabric. Lay pleats closed again and baste to upper edge. Slide upper edge of skirt under lower edge of dress bodice, 3 cm (1 1/4 ins) wide, and pin in place, making sure that one pleat fold meets right front band edge. Stitch along marked stitching line on dress bodice, beginning and ending at band joining seam. Stitch bands together along lines of previous stitching, from lower edge up, 2.5 cm (1 in) long, catching the skirt.