

### 107 Dress

Sizes 34, 36, 38, 40, 42

Length from waist 64 cm (25 1/4 ins)

### Materials

#### Crêpe satin,

width: 135 cm (53 ins)

length: 1.40 m (1 5/8 yds) for all sizes.

#### Elastic band,

width: 3.5 cm (1 1/2 ins)

length: 0.80 – 0.85 – 0.90 – 0.95 – 0.95 m  
(32 – 34 – 36 – 38 – 38 ins).

Vilene/Pellon G 785.

7 sew-on snap fasteners.

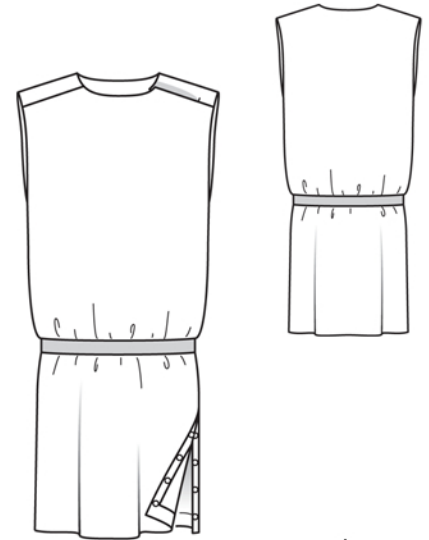
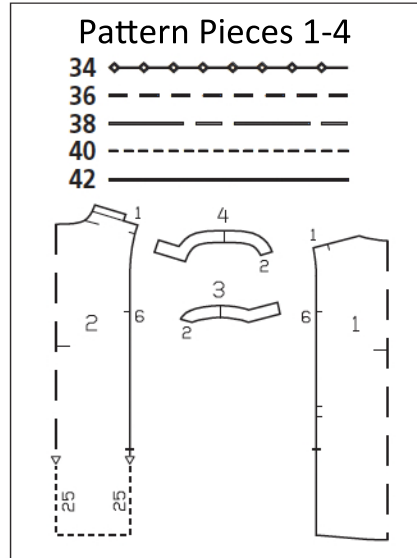
**Recommended fabrics:** Softly draping dress fabrics.

### Preparations

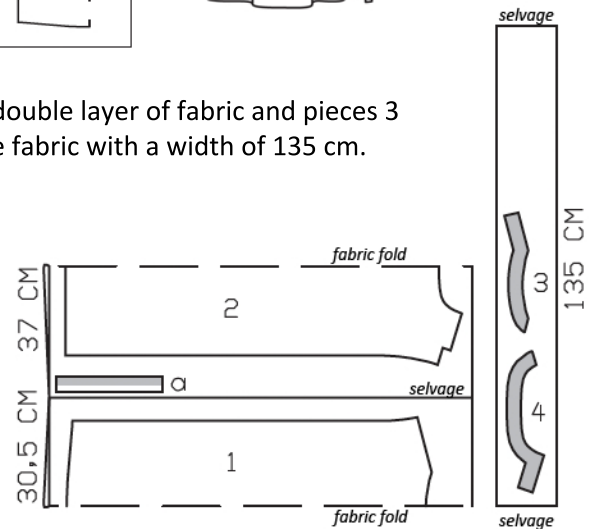
Print the pattern out on letter or A4 sized paper. It is **very** important to not scale or fit any of the pages, you must print the document in **actual size**. Your pattern will print on multiple pages, which you will then tile together. Arrange the sheets on a large, hard and flat surface matching up the numbers and letters (i.e. 6A to 6A). Cut or fold one of the sides and match the edge to it's corresponding side. Then, tape down in place so paper is secure.

Trace the pattern pieces from the pattern sheet following the lines and markings for the correct size and the correct style (107). This pattern also includes pattern pieces, lines and markings for style 106 that should be ignored.

On back, note different lines for right shoulder seam and left fastening underlap but cut both halves of the back the same size initially, from the double layer of fabric. Then, for the right shoulder seam, trim the self-facing to 1.5 cm (5/8 in) before marked "right seam" line.



Cut pieces 1, 2 & a on a double layer of fabric and pieces 3 & 4 on a single layer. Use fabric with a width of 135 cm.



### Cutting Out

- 1 front, on a fold 1x
- 2 back, on a fold 1x
- 3 front facing 1x
- 4 back facing 1x

Draft the following piece NOT included in the pattern:

- a) underlap,  
30 cm (12 ins) long,  
4 cm (2 1/2 ins) wide,  
finished width 2 cm (3/4 in).

**Interfacing:** See shaded area on pattern layout.

burda style magazine patterns do not have seam allowance included.

Seam and hem allowance to be added:

Seams and edges 1.5 cm (5/8 in),  
armhole edges and side slit 2 cm (3/4 in),  
hem 4 cm (1 5/8 ins).

## Sewing

Stitch right shoulder seam, right sides together. Stitch shoulder seams of facing (seam number 2). Press seam allowances open.

**Neck, shoulder fastening, and left shoulder seam:** Pin facing right sides together with neck edge, left front fastening edge, and integrated back underlap. Stitch along back underlap edge, neck edge, and front fastening edge, up to marking. Trim seam allowances. Turn side facing ends back and pin. Stitch left shoulder seam up to marking. Remove pins. Turn facing to inside and press edges. Press shoulder seam allowances open. On inside, stitch side end of front facing to side underlap end.

Stitch side seams below marking at seam number 6 and leave slit open in left side seam. Press seams open. Press allowance on each armhole edge to inside and sew in place by hand.

Press hem allowance to inside and sew in place by hand. On front, press allowance on slit edge to inside and sew to hem allowance. Fold underlap piece lengthwise, right side facing in. Stitch across bottom end. Turn underlap right side out and press. Stitch underlap to back slit edge.

Sew 3 upper snap halves to inside of left front shoulder edge, evenly spaced. Sew 4 upper snap halves to inside of front slit edge, not exiting needle on right fabric side. Sew lower snap halves to underlap to match.

Cut 76 – 80 – 84 – 88 – 92 cm

(30 – 31 1/2 – 33 – 34 3/4 – 36 1/4 ins) of elastic band and stitch ends together 1 cm (3/8 in) wide. Pull elastic over dress and pin to right side seam, between markings, matching seams. Stitch in place. Try on dress and pin elastic to left side seam, between markings. Stitch elastic in place at left side seam.

