

105 Dress

Sizes **72, 76, 80, 84, 88**

Length from waist 64 cm (25 1/4 ins)

Materials

Silk crêpe,

width: 120 cm (47 ins)

length,

grey: 0.60 – 0.60 – 0.65 – 0.65 – 0.65 m

(3/4 – 3/4 – 7/8 – 7/8 – 7/8 yd)

pink: 1.10 m (11/4 yds) of pink for all sizes

yellow: 0.55 m (3/4 yd)

white: 0.20 – 0.20 – 0.20 – 0.25 – 0.25 m

(1/4 – 1/4 – 1/4 – 3/8 – 3/8 yd)

Vilene/Pellon G 785.

Vilene Bias Tape/stay tape.

Recommended fabrics: Lightweight, softly draping dress fabrics.

Preparations

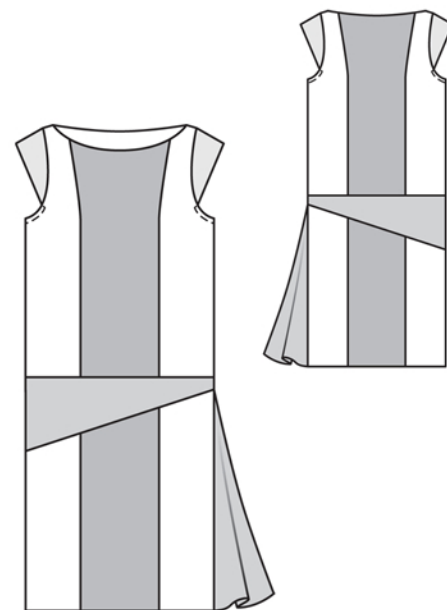
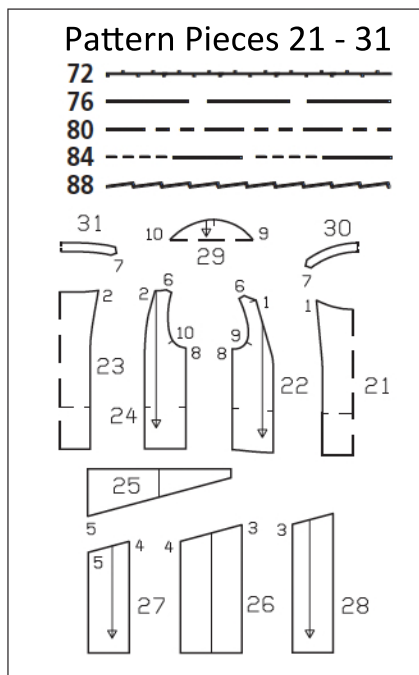
Print the pattern out on letter or A4 sized paper. It is **very** important to not scale or fit any of the pages, you must print the document in **actual size**. Your pattern will print on multiple pages, which you will then tile together. Arrange the sheets on a large, hard and flat surface matching up the numbers and letters (i.e. 6A to 6A). Cut or fold one of the sides and match the edge to it's corresponding side. Then, tape down in place so paper is secure.

Trace the pattern pieces from the pattern sheet following the lines and markings for your correct size.

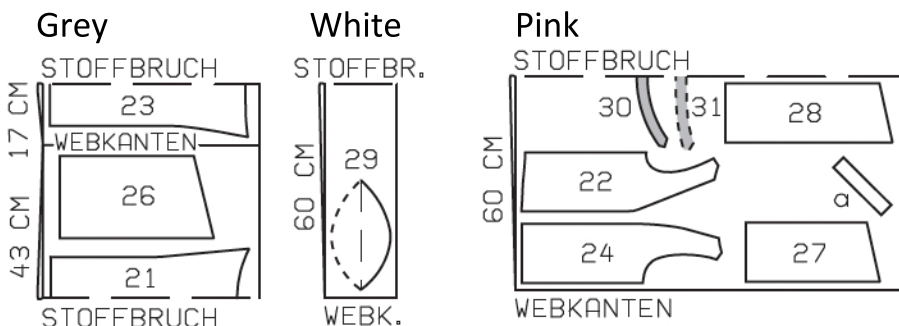
Follow the diagram to make a full-sized pattern piece for the godet (b)

burda style magazine patterns do not have seam allowance included.

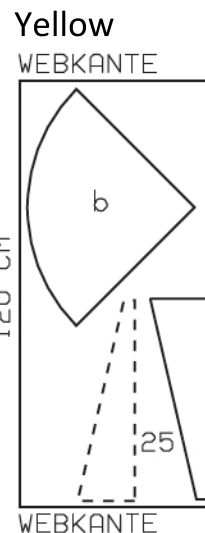
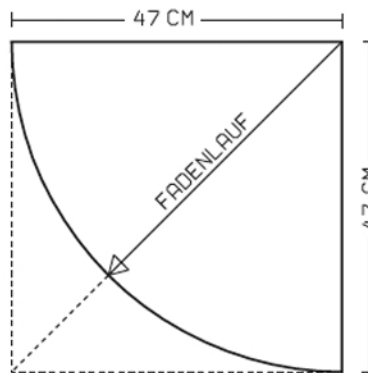
Seam and hem allowance to be added:
Seams and edges 1.5 cm (5/8 in), hem 4 cm (1 5/8 ins), on godet 1 cm (3/8 in).



Cut pieces 21-24 & 26-31 on a double layer of fabric, right sides facing in. Cut pieces b & 25 on a single layer of fabric. Cut front and back middle pieces as opposites. Use fabric with a width of 120 cm.



Godet (b) Diagram
draft this piece



stoffbruch = fabric fold
webkanten = selvage

Cutting Out Continued...

Grey fabric:

21 centre front, on a fold 1x
 23 centre back, on a fold 1x
 26 centre skirt panel 2x

Pink fabric:

22 side front 2x
 24 side back 2x
 27 right side skirt panel 2x
 28 left side skirt panel 2x
 30 front neck facing, on a fold 1x
 31 back neck facing, on a fold 1x

Draft the following piece not included in the pattern:

a) 2 bias strips for armholes,
 17 – 18 – 18 – 19 – 19 cm
 (6 3/4 – 7 – 7 – 7 1/2 – 7 1/2 ins) long,
 4 cm (1 5/8 ins) wide (incl. allowances).

Yellow fabric:

25 front middle piece 1x
 back middle piece (mirror
 image) 1x

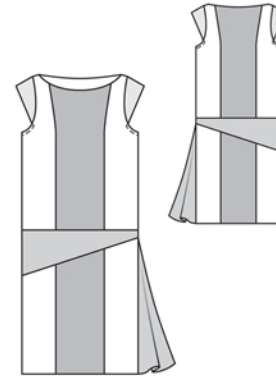
Draft the following piece not included in the pattern:

b) side godet (refer to diagram) 1x

White fabric:

29 sleeve, on a fold 2x

Interfacing: See shaded area on pattern layout.
 Iron Vilene Bias Tape/stay tape to wrong side of armhole edges.



Sewing

Stitch side front pieces to centre front, right sides together. Stitch side back pieces to centre back, right sides together. Stitch front and back section seams of skirt (seam numbers 3 and 4) together. Neaten seam allowances together and press onto centre pieces. Stitch skirt units to middle pieces (seam number 5). Stitch front middle piece with skirt to front and stitch back middle piece with skirt to back. Press seam allowances up.

Stitch shoulder seams on dress and on neck facing, right sides together. Begin and end stitching of each seam at marked neck edge. Stitch facing right sides together with neck. Trim allowances to 5 mm (3/16 in) wide. Turn facing up and stitch to seam allowances, close to seam. Turn facing to inside. Press edge. Sew inside facing edge to seams and baste to armhole edges.

Stitch side seams (seam number 8), stitching left side seam only to skirt attachment seam and leaving seam open below, for godet. Press seam allowances open.

Press allowance on lower edge of godet to inside and stitch. Stitch godet to left side skirt edges – hem allowance of skirt extends. Press allowances of godet joining seams onto skirt panel.

Fold sleeves on fold line, with wrong side facing in, and baste edges together. Press fold edge. Stitch sleeves to front and to back (seam numbers 9 and 10). Fold bias strips for armholes in half lengthwise, right side facing out, and press. Pin folded bias strips to armhole edges, below sleeves, so that fold edge of each strip lies on garment piece, 1 cm (3/8 in) past seam line, and ends of strip lie over lower sleeve edges.

Stitch along lines of armholes. Trim seam allowances. Turn bias strips to inside. Below sleeves, topstitch 7 mm (1/4 in) from armhole edges then stitch horizontally to lower sleeve edges.

Press hem allowance to inside and sew in place by hand.