

### 104 Dress

Sizes 36, 38, 40, 42, 44

Length from waist 55 cm (21 3/4 ins)

### Materials

**Crêpe de Chine,**

width: 140 cm (55 ins)

length,

yellow: 1.70 – 1.70 – 1.75 – 1.75 – 1.75 m

(1 7/8 – 1 7/8 – 2 – 2 – 2 yds)

grey: 0.35 m (1/2 yd) grey for all sizes.

Vilene/ Pellon G 785.

Sew-on snap fasteners, 1 large and 1 small.

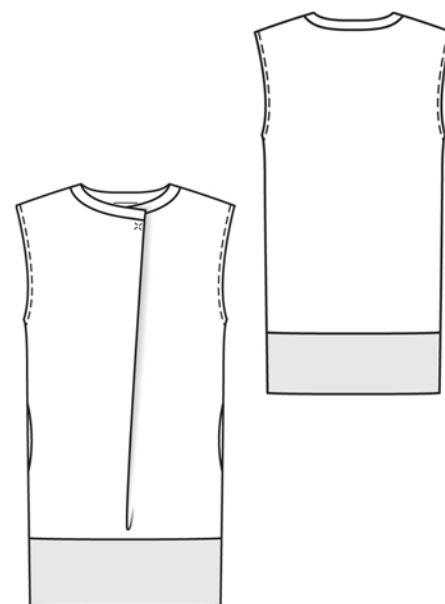
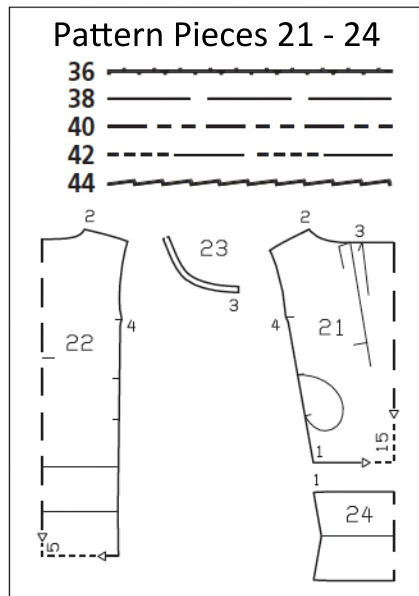
**Recommended fabrics:** Lightweight, softly draping dress fabrics.

### Preparations

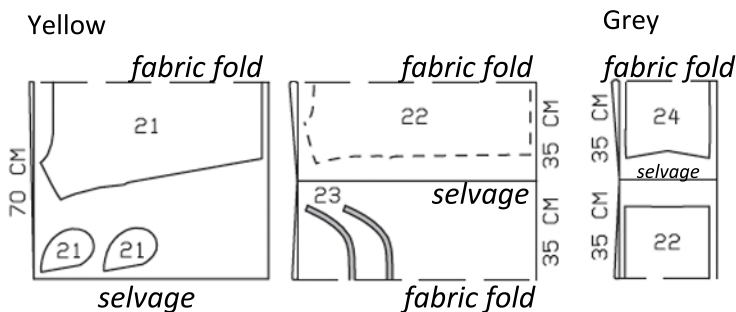
Print the pattern out on letter or A4 sized paper. It is **very** important to not scale or fit any of the pages, you must print the document in **actual size**. Your pattern will print on multiple pages, which you will then tile together. Arrange the sheets on a large, hard and flat surface matching up the numbers and letters (i.e. 6A to 6A). Cut or fold one of the sides and match the edge to it's corresponding side. Then, tape down in place so paper is secure.

Trace the pattern pieces from the pattern sheet following the lines and markings for the correct size and the correct style (104). This pattern also includes pattern pieces, lines and markings for style 103 that should be ignored.

The pleat fold line on piece 21 applies for the right front half and the abutting line, for the left front half. Trace the pocket piece from piece 21 as a separate pattern piece – it is the same for all sizes. Cut piece 22 apart on the marked seam line = back and back hem band.



Cut pieces 21-24 on a double layer of fabric right sides facing in. Use fabric with a width of 140cm.



### Cutting Out

Yellow fabric:

21 front, on a fold	1x
pocket piece	4x
22 back, on a fold	1x
23 neck band, on a fold	2x

Grey fabric:

22 back hem band, on a fold	1x
24 front hem band, on a fold	1x

**Interfacing:** Iron to wrong side of neck bands. Also iron strips of interfacing, approx. 1 cm (3/8 in) wide, to wrong fabric side of back shoulder edges.

**burda style magazine patterns do not have seam allowance included.**

Seam and hem allowance to be added:

Seams and edges 1.5 cm (5/8 in).

## Sewing

On neck edge of front, clip seam allowance at markings (seam number 3). Between clips, press seam allowance to wrong side, turn raw edge under, and stitch.

Stitch shoulder seams, right sides together and press seam allowances open.

**Neck band:** Stitch outer band piece to neck edge of blouse. Press seam allowances onto band. Lay inside band piece right sides together with outer piece and pin. Stitch across ends and along neck edge of band. Turn band right side out. Turn in inside edge and baste. Topstitch band close to edge. Hand-sew inside edge of band to joining seam.

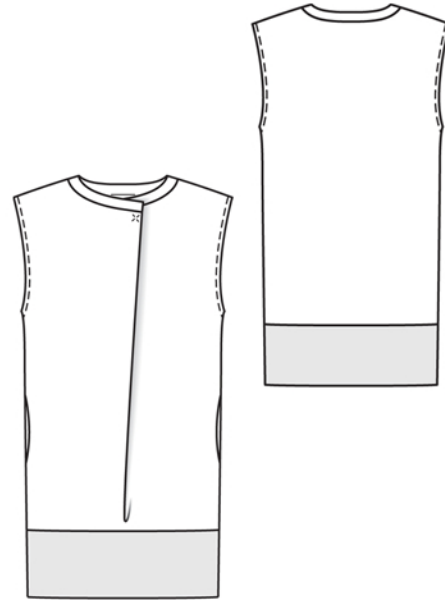
On armhole edges, press allowances to inside, turn in to an allowance width of 7 mm (1/4 in), and stitch.

Stitch front hem band to lower front edge and stitch back hem band to lower back edge, right sides together. Press seam allowances of joining seams towards bands.

Stitch side seams on dress and hem band as continuous seams, making sure not to stitch across pocket openings. Clip seam allowance of front band on fold line, close to seam.

**Inseam pockets:** Pin pocket pieces right sides together with seam allowances of pocket opening edges and stitch in place, directly along marked seam lines. Press pocket pieces forward and stitch together.

Fold hem band on fold line, with wrong side facing in, and press. Lay inside edge of band flat over joining seam. Stitch from right side of garment, along line of seam, thereby catching inside edge of band.



Fold front on marked “right fold” line, wrong side facing in. Press fold edge from the top, approx. 5 cm (2 ins) long. Sew top half of (large) snap to inside of the double layer of fabric, below band joining seam, next to fold edge. Take small, even stitches and exit needle on right fabric side.

Turn fold edge onto left front half, to meet abutting line, and pin. Mark position of bottom half of snap. Sew bottom half of snap in place, catching a piece of fabric on the inside, as reinforcement. Fasten left band end to inside of band, with the small snap fastener.