

### 102 Dress

Sizes **34, 36, 38, 40, 42**

Length of dress from waist 60 cm (23 3/4 ins) (measured at centre)

### Materials

**Crêpe satin,**

width: 135 cm (53 ins)

length: 2.50 – 2.50 – 2.60 – 2.65 – 2.70 m  
(2 3/4 – 2 3/4 – 2 7/8 – 3 – 3 yds).

Vilene/Pellon G 785.

Vilene Bias Tape/stay tape.

**Recommended fabrics:** Lightweight, softly draping dress fabrics.

### Preparations

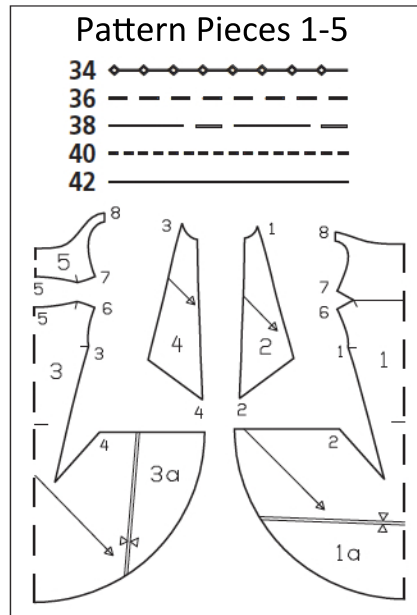
Print the pattern out on letter or A4 sized paper. It is **very** important to not scale or fit any of the pages, you must print the document in **actual size**. Your pattern will print on multiple pages, which you will then tile together. Arrange the sheets on a large, hard and flat surface matching up the numbers and letters (i.e. 6A to 6A). Cut or fold one of the sides and match the edge to it's corresponding side. Then, tape down in place so paper is secure.

Trace the pattern pieces from the pattern sheet following the lines and markings for your correct size. Glue pieces 1 and 1a and pieces 3 and 3a together on the joining lines. Tip: Cutting out will be easier if you trace the pattern pieces twice from the pattern sheet. Then glue pieces 1, 3, and 5 together along the centres.

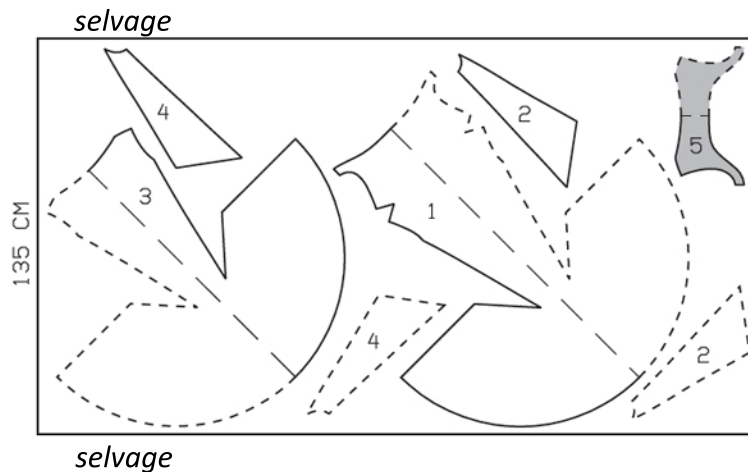
burda style magazine patterns do not have seam allowance included.

Seam and hem allowance to be added:

Seams and edges 1.5 cm (5/8 in), no allowances on hem edges.



Cut pieces 1-5 on a single layer of fabric, right side facing up. Cut right and left pieces as opposites. Use fabric with a width of 135cm.



### Cutting Out

- 1 centre front with facing, on a fold 1x
- 2 side front 2x
- 3 centre back, on a fold 1x
- 4 side back 2x
- 5 back facing, on a fold 1x

**Interfacing:** See shaded area on pattern layout. Iron a piece of interfacing to wrong side of fabric, over each corner between the front and the self-facing. Also iron pieces of interfacing to wrong side of fabric, over seam corners on centre front and centre back. Iron Vilene Bias Tape/ stay tape to wrong sides of armhole edges of front self-facings.

## Sewing

Stitch side fronts to centre front, right sides together, from upper edge to corner. Clip seam allowance of centre front into corner. Stitch remaining seams from corner to side seam edge. Stitch back section seams in same manner. Press seam allowances open.

Stitch back facing right sides together with back neck edge, beginning and ending stitching exactly at marking. Trim seam allowances to 5 mm (3/16 in) wide. Turn facing up. Press seam allowances open. Clip seam allowance of front into each corner between front and facing. Stitch shoulder seams of dress from seam number 6 to corner and shoulder seams of facing from seam number 7 to corner, in each case not catching seam allowance at back neck edge. Press shoulder seam allowances open. Turn facings to inside. Press back neck edge. Do not press front neck edge.

**Armholes:** First, at one side seam edge, turn armhole edges under, toward one another, and pin together with a single straight pin. Reach between dress and facing to pull out armhole edges. Remove the pin but keep hold of the edges. Beginning at side seam edge, stitch armhole edges of dress and facing right sides together, up to shoulder seam. Trim seam allowances. Push seam in place again. Then, on this armhole, stitch remaining edges together as described. Push seam in place again. Face other armhole in the same manner. Press armhole edges.

At armholes, turn facings up again. Stitch side seams as continuous seams. Turn facings to inside again. Sew inside facing edges to seams. Hem is left raw.

