

101 Dress

Sizes 36, 38, 40, 42, 44

Length from waist 52 cm (20 1/2 ins)

Materials

Shot Taffeta,

width: 140 cm (55 ins)

length,

yellow: 1.00 m (1 1/8 yds) for all sizes,

red: 0.75 – 1.10 – 1.10 – 1.10 – 1.10 m

(7/8 – 1 1/4 – 1 1/4 – 1 1/4 – 1 1/4 yds)

cream: 0.35 m (1/2 yd)

blue: 0.20 m (1/4 yd)

-Vilene/Pellon G 785.

-7 large sew-on snap fasteners.

-A small piece of lining fabric to cover the snap fasteners.

-7 large buttons.

-1 fabric-covered belt buckle (without prong), bar width 5 cm (2 ins).

-Magic chalk.

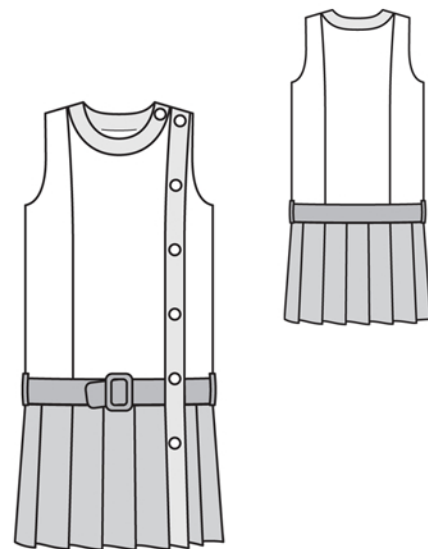
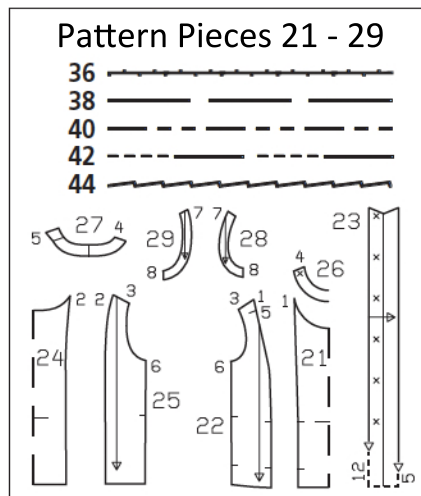
Recommended fabrics: Dress fabrics with some body

Preparations

Print the pattern out on letter or A4 sized paper. It is **very** important to not scale or fit any of the pages, you must print the document in **actual size**. Your pattern will print on multiple pages, which you will then tile together. Arrange the sheets on a large, hard and flat surface matching up the numbers and letters (i.e. 6A to 6A). Cut or fold one of the sides and match the edge to it's corresponding side. Then, tape down in place so paper is secure.

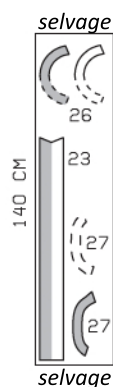
Trace the pattern pieces from the pattern sheet following the lines and markings for your correct size.

The snap fasteners marked on piece 23 apply for size 36. For the other sizes, mark the top fastener the same distance from upper edge as for size 36. The 2nd snap from the bottom is the same for all sizes.

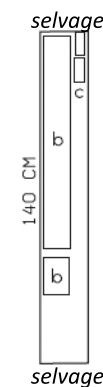


Cut pieces a, b, c, 23, 26 & 27 on a single layer of fabric and pieces 21, 22, 24, 25, 28, & 29 on a double layer of fabric. Use fabric with a width of 140 cm.

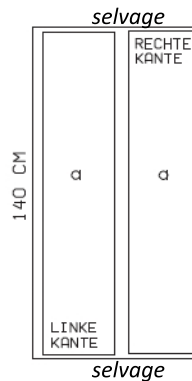
Creme
sizes 36-44



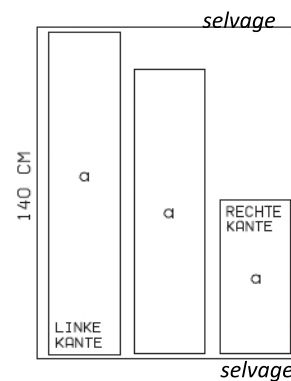
Blue
sizes 36-44



Red
size 36



sizes 38-44



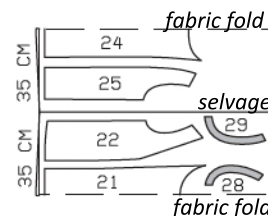
Mark remaining snaps evenly in between. The snap fastener marked on piece 26 is for size 36. For the other sizes, remark this snap according to the size lines.

burda style magazine patterns do not have seam allowance included.

Seam and hem allowance to be added:

Seams and edges 1.5 cm (5/8 in), skirt seams 1 cm (3/8 in), hem on skirt panels 4 cm (1 5/8 ins).

Yellow
sizes 36-44



Cutting Out

Yellow fabric:

21 centre front, on a fold	1x
22 side front	2x
24 centre back, on a fold	1x
25 side back	2x
28 front armhole facing	2x
29 back armhole facing	2x

Red fabric:

draft the following pieces NOT included in the pattern:

- a) skirt panels, 30 cm (12 ins) long, size 36: 2x 136 cm (53 1/2 ins) wide, size 38: 1x 138 cm (54 1/2 ins), 1x 73 cm (28 3/4 ins), 1x 65 cm (25 3/4 ins) wide, size 40: 1x 136 cm (53 1/2 ins), 1x 96 cm (37 3/4 ins), 1x 64 cm (25 1/4 ins) wide, size 42: 1x 138 cm (54 1/2 ins), 1x 97 cm (38 1/4 ins), 1x 65 cm (25 3/4 ins) wide, size 44: 1x 136 cm (53 1/2 ins), 1x 120 cm (47 1/4 ins), 1x 64 cm (25 1/4 ins) wide.

Cream-coloured fabric:

23 front band	1x
26 front neck band, on a fold	2x
27 back neck band	2x

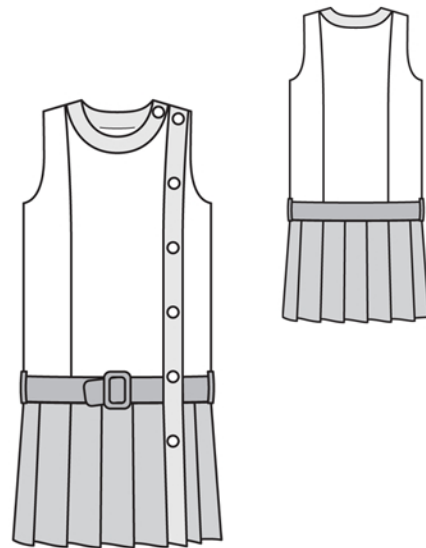
Blue fabric:

draft the following pieces NOT included in the pattern:

- b) belt pieces, 1x 90 – 94 – 98 – 101 – 105 cm (35 1/2 – 37 – 38 3/4 – 39 3/4 – 41 1/2 ins) long, and 1x 16 – 16 – 17 – 17 – 17 cm (6 3/8 – 6 3/8 – 6 3/4 – 6 3/4 – 6 3/4 ins) long, each 11 cm (4 1/2 ins) wide, finished width 5.5 cm (2 1/4 ins),
c) 2 belt carriers, 10 cm (4 ins) long, 4 cm (1 5/8 ins) wide (incl. allowances).

Use the small piece of fabric to cover the buckle.

Interfacing: See shaded area on pattern layout. Iron interfacing to outer neck band pieces. Also iron a strip of interfacing, 2 cm (3/4 in) wide, to wrong side of vertical front edge of left side front piece.



Sewing

On dress bodice, stitch right front section seam and back section seams, right sides together. Stitch shoulder seams, right sides together and press seam allowances open.

On upper left corner of centre front piece, fold allowance down and press. Stitch right shoulder seam of neck band (seam number 4). Press seam allowances open. Stitch outer neck band to neck edge of front and back. Beginning at left shoulder seam, stitch left end of band to left side front, up to marking (seam number 5). Clip seam allowance of left side front at marking. Trim allowances of band joining seam and press onto band. Press seam allowance of left side front to inside, below clipping.

Lay inside neck band right sides together with attached band and on band ends, turn up seam allowance on inside band edge. Stitch across band ends and along neck edge. Trim seam allowances, trimming corners diagonally. Turn band right side out. Turn inside band edge under and baste over joining seam. Stitch from outer side, along line of seam.

Armholes and side seams: Stitch shoulder seams of armhole facings (seam number 7). Stitch facings to armhole edges, right sides together. Trim seam allowances. Turn facings over seam allowances into armholes and stitch to seam allowances, close to seams. Turn facings to inside and press edges. At armholes, turn facings up again. Stitch side seams as continuous seams. Turn facings to inside again. Sew inside facing edges to seams.

Fold each belt carrier lengthwise, right side facing in. Stitch 1 cm (3/8 in) from fold edge. Turn right side out. Stitch belt carriers to dress bodice, at marking over side seams – belt carriers point up. Turn belt carriers down and baste bottom ends to lower edge of dress bodice.

Stitch skirt pieces together to form one long piece and press seam all allowances open.

Sewing Continued...

Press hem allowance to inside and sew in place by hand. Mark pleats on upper and lower skirt edges, as follows: For sizes 36, 40, and 44, mark pleats 8 cm (3 1/4 ins) wide and 16 cm (6 3/8 ins) deep; for sizes 38 and 42, mark pleats 8.3 cm (3 3/8 ins) wide and 16 cm (6 3/8 ins) deep. Begin with 1 cm (3/8 in) wide seam allowance and one pleat width and end with one pleat width and 1 cm (3/8 in) wide seam allowance. Fold pleats and press. Baste to upper edge. The pleats should run from right to left around the body. On left skirt edge, press allowance to inside.

Stitch skirt to dress bodice, turning pressed-under allowance on left dress edge open again. Press seam allowances up. Turn allowance to inside again. Stitch to dress bodice and to hem allowance of skirt.

Fold belt pieces lengthwise, right side facing in. Stitch along lengthwise edges and across one end of each. Turn right side out. Baste short belt piece to edge of centre front piece, between marking and skirt joining seam.

Stitch interfaced half of front band to vertical edge of centre front and to skirt panel. Press allowances of joining seam onto band. Press allowance at vertical edge of inside band half to wrong side, 2 mm (1/8 in) before marked seam line. Fold band on fold line, right side facing in, and stitch across ends. Turn band right side out. Baste inside band edge in place. Stitch from outer side, along line of joining seam.

Fold open end of long belt piece over bar of buckle, 4 cm (1 5/8 ins) wide, turn raw edge under, and sew in place. Run belt through belt carriers. Stitch faced end to edge of left side front, above skirt joining seam.

Cover snap fastener halves with lining fabric. Sew top halves of snaps to inside of front band. Lay band on left dress edge and mark placement of bottom halves of snaps. Sew bottom halves of snaps in place as marked, catching pieces of interfaced fabric on wrong side, as reinforcement. Sew large buttons to outer side of band, over snaps.

