

### 148 Bikini for Girls

Sizes 98, 104, 110, 116, 122, 128

### Materials

**Batiste,**  
width: 120 cm (47 ins)  
length: 0.70 m (7/8 yd) for all sizes.

Elastic,  
width: 5 mm (3/16 in)  
length: 1.10 – 1.10 – 1.15 – 1.15 – 1.20 – 1.20 m  
(1 1/4 – 1 1/4 – 1 3/8 – 1 3/8 – 1 3/8 – 1 3/8 yds).

6 wooden beads (Rayher), 7 mm (1/4 in).

Recommended fabrics: Lightweight cotton fabrics

### Preparations

Print the pattern out on letter or A4 sized paper. It is **very** important to not scale or fit any of the pages, you must print the document in **actual size**. Your pattern will print on multiple pages, which you will then tile together. Arrange the sheets on a large, hard and flat surface matching up the numbers and letters (i.e. 6A to 6A). Cut or fold one of the sides and match the edge to it's corresponding side. Then, tape down in place so paper is secure.

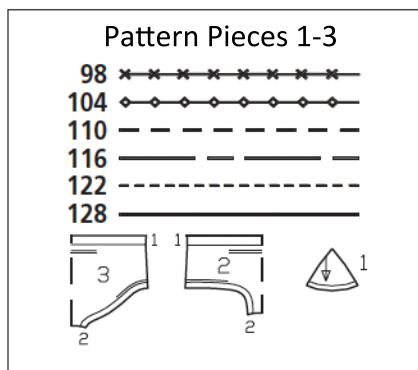
Trace the pattern pieces from the pattern sheet following the lines and markings for the correct size.

The stitching lines for the elastic casing (leg openings) on pieces 2 and 3 are marked for size 98. For sizes 104 – 128, remark the stitching lines at the same width.

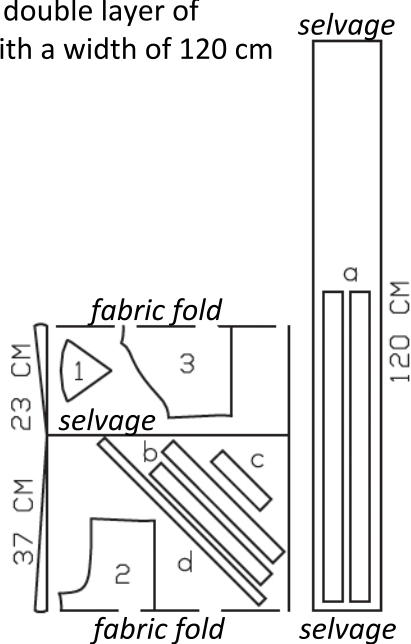
burda style magazine patterns do not have seam allowance included.

Seam and hem allowance to be added:

Seams and edges 1 cm (3/8 in), lower bust piece edge 2 cm (3/4 in).



Cut pieces 1-3 on a double layer of fabric. Use fabric with a width of 120 cm



### Cutting Out

- 1 bust piece 2x
- 2 front bottoms piece, on a fold 1x
- 3 back bottoms piece, on a fold 1x

Draft the following pieces on included in the pattern:

- a) drawstring band, a total of 130 cm (52 ins) long, 4 cm (15/8 ins) wide (incl. allowances),

- b) 2 bias binding strips for side bust piece edges and tie bands, 65 cm (26 ins) long, 4 cm (15/8 ins) wide (incl. allowances)

- c) 2 bias binding strips for front bust piece edges, 13.5 – 14 – 14.5 – 15 – 15.5 – 16 cm (5 3/8 – 5 1/2 – 5 3/4 – 6 – 6 1/4 – 6 3/8 ins) long, 4 cm (15/8 ins) wide (incl. allowances)

## Cutting Out Continued...

d) 2 bias facing strips for drawstring casings (leg openings),  
46 – 47 – 48 – 49 – 50 – 51 cm  
(18 1/8 – 18 1/2 – 19 – 19 3/4 – 20 1/4 ins) long,  
2.5 cm (1 in) wide (incl. allowances).

## Sewing

### Bikini top

On front and side edges of bust pieces, trim away seam allowances. Fold each binding strip in half lengthwise, right side facing out, and press. Unfold strips out flat again. Now fold each long edge in to the pressed fold and press again. Lay pressed shorter binding strips over front bust piece edges and baste. Edgestitch binding in place. Lay longer binding strips over side bust piece edges and baste, with strips extending at top, as tie bands. Turn in ends of tie bands. Edgestitch binding in place and edgestitch tie band edges closed.

Press allowance on lower edge of each bust piece to inside, turn edge under, and stitch as marked, to form casing.

Press drawstring band as for binding strips. Stitch band edges closed. Run band through casings. Thread 3 beads onto each end of band and knot ends.

### Bikini bottoms

Stitch side seams, right sides together. Neaten seam allowances together and press onto back.

Press allowances at leg opening edges to inside, turn in, and stitch.

On facing strips for casings, press long edges to inside, 7 mm (1/4 in) wide. Pin each facing strip to inside leg opening edge, over marked elastic casing lines. Stitch from right side as marked. Pull elastic into casings. Stitch ends of each elastic together to a circumference of 26 – 27 – 28 – 29 – 31 – 33 cm (10 1/4 – 10 3/4 – 11 1/8 – 11 1/2 – 12 1/4 – 13 ins).



Stitch crotch seam, right sides together. Neaten seam allowances together and press to one side. Topstitch close to seam.

Turn self-facing on upper edge of bikini bottoms to inside on fold line, turn edge under, and stitch as marked, to form elastic casing. In back, leave a section of seam open in lower stitching line, for the elastic. Pull elastic into casing. Sew ends of elastic together to a circumference of approx. 44 – 45 – 46 – 47 – 49 – 52 cm (17 1/4 – 17 3/4 – 18 1/8 – 18 1/2 – 19 1/4 – 20 1/2 ins). Stitch opening closed.