

146 Girl's Dress

Sizes 104, 110, 116, 122, 128

Back length of dress 60 – 63 – 66 – 70 – 74 cm (23 3/4 – 24 3/4 – 26 – 27 3/4 – 29 1/4 ins)

3/4-sleeves, approx. 8 cm (3 1/4 ins) shorter than normal

Materials

Print batiste,
width: 120 cm (47 ins)

length: 0.95 – 1.00 – 1.05 – 1.10 – 1.15 m
(1 1/8 – 1 1/8 – 1 1/4 – 1 1/4 – 1 3/8 yds) of pink

and 0.45 – 0.45 – 0.50 – 0.50 – 0.55 m
(5/8 – 5/8 – 5/8 – 5/8 – 3/4 yd) of green.

4 small fabric-covered buttons.

Recommended fabrics: Lightweight dress fabrics with some body.

Preparations

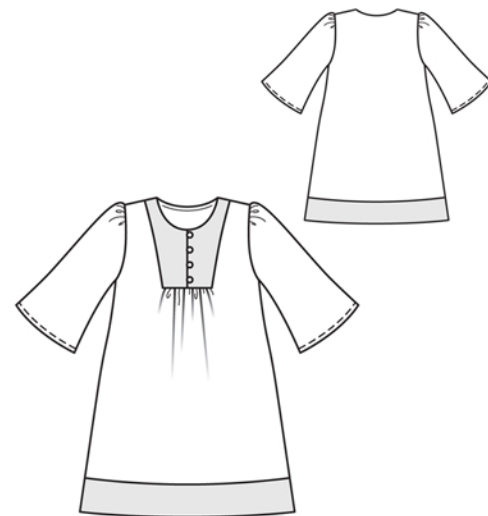
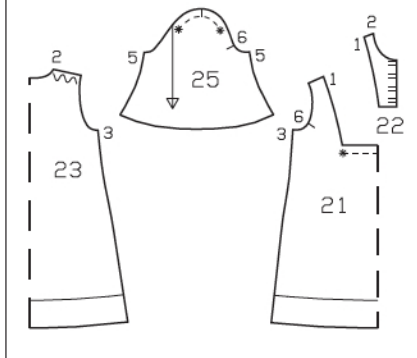
Print the pattern out on letter or A4 sized paper. It is **very** important to not scale or fit any of the pages, you must print the document in **actual size**. Your pattern will print on multiple pages, which you will then tile together. Arrange the sheets on a large, hard and flat surface matching up the numbers and letters (i.e. 6A to 6A). Cut or fold one of the sides and match the edge to it's corresponding side. Then, tape down in place so paper is secure.

Trace the pattern pieces from the pattern sheet following the lines and markings for the correct size and the correct style (146). This pattern also includes pattern pieces, lines and markings for style 145 that should be ignored.

On pieces 21 and 23, trim away the hem band along the marked seam line.
The markings for the loops on piece 22 are for size 104. For sizes 110 – 128, move the top marking up the same distance from corner of neck edge as for size 104.

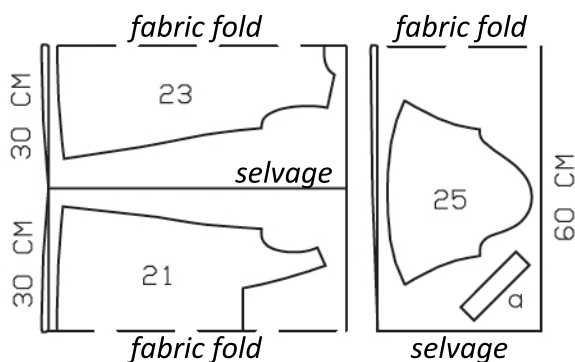
Pattern Pieces 21-23, 25

104
110
116
122
128

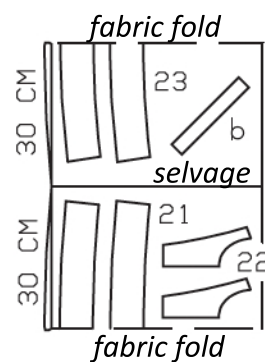


Cut pieces 21-23 and 25 on a double layer of fabric. Use fabric with a width of 120cm.

Pink



Green



The bottom marking is the same for all sizes. Space the other markings evenly in between.

burda style magazine patterns do not have seam allowance included.

Seam and hem allowance to be added:

Seams and edges 1 cm (3/8 in), joining seams of insert 7 mm (1/4 in), sleeve hems 1.5 cm (5/8 in).

Cutting Out

Pink fabric:

21 front, on a fold 1x
23 back, on a fold 1x
25 sleeve 2x

Draft the following piece not included in pattern

a) bias strip for back neck edge
17 – 17 – 17 – 18 – 18 cm
(6 3/4 – 6 3/4 – 6 3/4 – 7 – 7 ins)
long, 4 cm (15/8 ins) wide (incl. allowances).

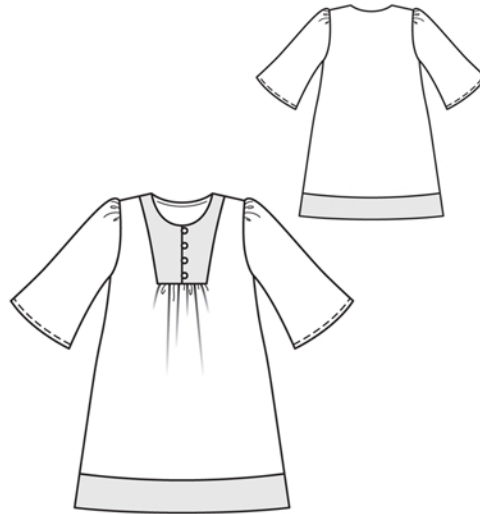
Cutting Out Continued...

Green fabric:

- 21 front hem band, on a fold 2x
- 22 front insert 4x
- 23 back hem band, on a fold 2x

Draft the following piece not included in the pattern:

- b) bias strip for 4 loops,
20 cm (8 ins) long,
4 cm (15/8 ins) wide (incl. allowances).



Sewing

Loops:

Fold bias strip for loops lengthwise, right side facing in. Stitch 3 mm (1/8 in) from fold edge. Trim seam allowances to 3 mm (1/8 in) wide. Thread a darning needle with ends of thread and knot securely. Push needle eye first through fabric tube to turn right side out. Do not press the turned fabric tube flat. Cut into 4 equal pieces. Form loop with each piece – size of loops must match your buttons. Baste loops to outer right front insert piece as marked.

Front insert:

Lay pairs of insert pieces (outer and inner pieces) together, right sides facing. Stitch along front and neck edges. Trim seam allowances. Turn inserts right side out and press edges. Press seam allowances on side edges to inside. Lay outer and inner insert pieces flat apart and press seam allowance on lower edge to wrong side. Gather horizontal edge of front between asterisks to 7 – 7 – 7 – 7.5 – 8 cm (2 3/4 – 2 3/4 – 2 3/4 – 3 – 3 1/4 ins). Stitch each inner insert piece to inside of front, along side joining edge and along lower horizontal edge, to centre, clipping seam allowance of fronts at centre. Turn outer insert pieces to outside, pin over seams, and edgestitch in place. Topstitch close to front and neck edges.

Stitch shoulder seams – allowance of back extends at neck edge. Trim seam allowances to 7 mm (1/4 in) wide, neaten together, and press onto back.

Back neck edge:

Fold bias strip for back neck edge lengthwise, right side facing out, and press. Pin folded bias strip to neck edge so that fold edge of strip lies on garment piece, 7 mm (1/4 in) past seam line. Trim seam allowances. Turn bias strip up and turn ends under. Turn bias strip to inside and press edge. Topstitch close to neck edge. Sew ends of strip in place.

Hem band:

Stitch outer hem bands to lower front and back edges. Press allowances of joining seams onto bands. Stitch side seams. Press seam allowances open. Stitch side seams of inside hem band. Lay inside hem band right sides together with attached band. Stitch lower edges together. Turn band right side out. Turn inside edge under and baste. Topstitch from right side, close to joining seam.

Stitch sleeve seams. Turn sleeve hem allowances to inside and stitch.

Set in sleeves, matching top sleeve and underarm points also gathering caps.