

### 145 Tunic for Girls

**Sizes 104, 110, 116, 122, 128**

Back length 43 – 45 – 47 – 49 – 51 cm  
(17 – 17 3/4 – 18 1/2 – 19 1/4 – 20 1/4 ins)

### Materials

**Blouse poplin,**

width: 135 cm (53 ins)

length: 0.95 – 1.00 – 1.05 – 1.10 – 1.15 m  
(1 1/8 – 1 1/8 – 1 1/4 – 1 1/4 – 1 3/8 yds).

4 small fabric-covered buttons.

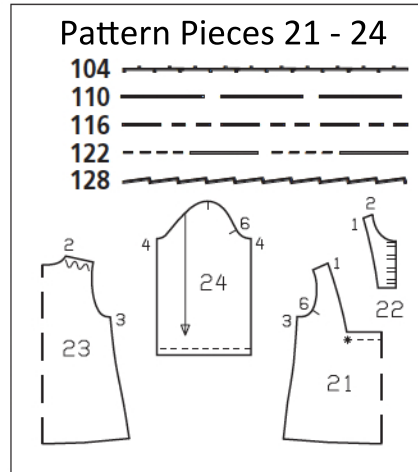
**Recommended fabrics:** Lightweight fabrics with some body.

### Preparations

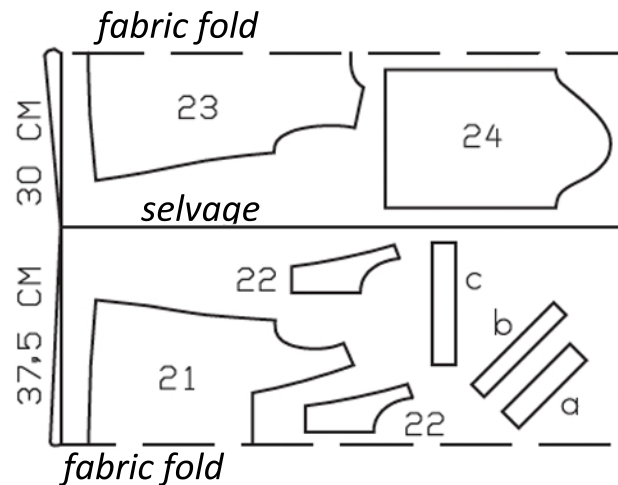
Print the pattern out on letter or A4 sized paper. It is **very** important to not scale or fit any of the pages, you must print the document in **actual size**. Your pattern will print on multiple pages, which you will then tile together. Arrange the sheets on a large, hard and flat surface matching up the numbers and letters (i.e. 6A to 6A). Cut or fold one of the sides and match the edge to it's corresponding side. Then, tape down in place so paper is secure.

Trace the pattern pieces from the pattern sheet following the lines and markings for the correct size and the correct style (145). This pattern also includes pattern pieces, lines and markings for style 146 that should be ignored.

The markings for the loops on piece 22 are for size 104. For sizes 110 – 128, move the top marking up the same distance from corner of neck edge as for size 104. The bottom marking is the same for all sizes. Space the other markings evenly in between.



Cut pieces 21 - 24 on a double layer of fabric. Use fabric with a width of 135cm.



burda style magazine patterns do not have seam allowance included.

Seam and hem allowance to be added:

Seams and edges 1.5 cm (5/8 in),  
joining seams of insert 7 mm (1/4 in),  
hem 4 cm (1 5/8 ins).

### Cutting Out

21 front, on a fold	1x
22 front insert	4x
23 back, on a fold	1x
24 sleeves	2x

### Cutting Out Continued...

Draft the following pattern pieces not included in the pattern sheet:

a) bias strip for back neck edge,  
17 – 17 – 17 – 18 – 18 cm  
(6 3/4 – 6 3/4 – 6 3/4 – 7 – 7 ins) long,  
4 cm (1 5/8 ins) wide (incl. allowances)

b) bias strip for 4 loops,  
20 cm (8 ins) long,  
3 cm (1 1/4 ins) wide (incl. allowances)

c) 2 binding strip for lower sleeve edges,  
24 – 24 – 24.5 – 24.5 – 24.5 cm  
(9 1/2 – 9 1/2 – 9 3/4 – 9 3/4 – 9 3/4 ins) long,  
4 cm (1 5/8 ins) wide (incl. allowances)



Stitch shoulder seams – allowance of back extends at neck edge. Trim seam allowances to 7 mm (1/4 in) wide, neaten edges together, and press onto back.

Set in sleeves, matching up top sleeve and underarm points.

**Back neck edge:**  
Fold bias strip for back neck edge lengthwise, right side facing out, and press. Pin folded bias strip to neck edge so that fold edge of strip lies on garment piece, 7 mm (1/4 in) past seam line. Trim seam allowances. Turn bias strip up and turn ends under. Turn bias strip to inside and press edge. Topstitch close to neck edge. Sew ends of strip in place.

Press hem allowance to inside and stitch 3 cm (1 1/4 ins) from lower edge.

Stitch side seams, right sides together.

On lower sleeve edges, trim away allowances. Stitch sleeve seams.

**Bind lower sleeve edges:**  
Gather lower sleeve edges to 21 – 21 – 21.5 – 21.5 – 21.5 cm (8 3/8 – 8 3/8 – 8 1/2 – 8 1/2 – 8 1/2 ins). Fold each binding strip in half lengthwise, right side facing out, and press. Unfold strip out flat again. Now fold each long edge in to the pressed fold and press again. Unfold the pressed binding strip and stitch ends together to match sleeve edge. Work from inside to pin each binding strip to sleeve edge. Stitch 1 cm (3/8 in) from fabric edges, along the fold. Turn binding out over edge, turn raw edge under, and baste. Edgestitch binding in place.

### Sewing

**Loops:**  
Fold bias strip for loops lengthwise, right side facing in. Stitch 3 mm (1/8 in) from fold edge. Trim seam allowances to 3 mm (1/8 in) wide. Thread a darning needle with ends of thread and knot securely. Push needle eye first through fabric tube to turn right side out. Do not press the turned fabric tube flat. Cut into 4 equal pieces. Form loop with each piece – size of loops must match your buttons. Baste loops to outer right front insert piece as marked.

**Front insert:**  
Lay pairs of insert pieces (outer and inner pieces) together, right sides facing. Stitch along front and neck edges. Trim seam allowances. Turn inserts right side out and press edges. Press seam allowances on side edges to inside. Lay outer and inner insert pieces flat apart and press seam allowance on lower edge to wrong side. Gather horizontal edge of front between asterisks to 7 – 7 – 7 – 7.5 – 8 cm (2 3/4 – 2 3/4 – 2 3/4 – 3 – 3 1/4 ins). Stitch each inner insert piece to inside of front, along side joining edge and along lower horizontal edge, to centre, clipping seam allowance of fronts at centre. Turn outer insert pieces to outside, pin over seams, and edgestitch in place. Topstitch close to front and neck edges.