

126 Dress

Sizes 36, 38, 40, 42, 44

Length from waist 51 cm (20 1/4 ins)

3/4-sleeves, approx. 48 cm (19 ins) long

Materials

Batiste,

width: 120 cm (47 ins)

length: 2.20 – 2.20 – 2.20 – 2.70 – 2.70 m

(2 1/2 – 2 1/2 – 2 1/2 – 3 – 3 yds).

3 small hooks and eyes.

Recommended fabrics: Lightweight dress fabrics

Preparations

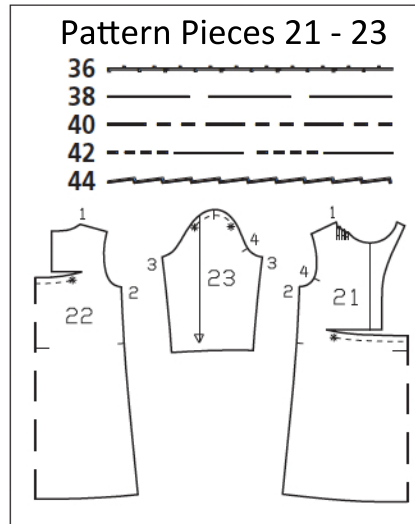
Print the pattern out on letter or A4 sized paper. It is **very** important to not scale or fit any of the pages, you must print the document in **actual size**. Your pattern will print on multiple pages, which you will then tile together. Arrange the sheets on a large, hard and flat surface matching up the numbers and letters (i.e. 6A to 6A). Cut or fold one of the sides and match the edge to it's corresponding side. Then, tape down in place so paper is secure.

Trace the pattern pieces from the pattern sheet following the lines and markings for the correct size and the correct style (126). This pattern also includes pattern pieces, lines and markings for style 125 that should be ignored.

burda style magazine patterns do not have seam allowance included.

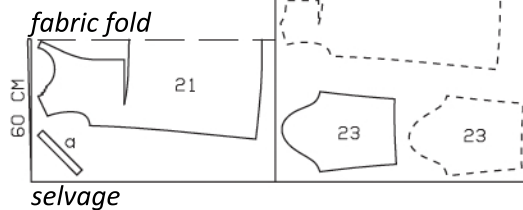
Seam and hem allowance to be added:

Seams and edges 1.5 cm (5/8 in), hem 5 cm (2 ins), sleeve hems 4 cm (1 5/8 ins).

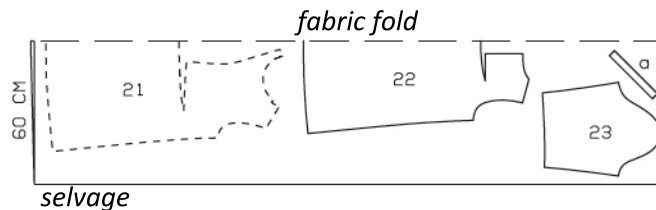


Cut piece 21-23 on a double layer of fabric. Use fabric with a width of 120cm.

Sizes 36 - 40



Sizes 42 & 44



Cutting Out

21 front, on a fold 1x
22 back, on a fold 1x
23 sleeve 2x

Draft the following piece not included in the pattern:

a) bias strip for back neck edge,
24 – 24 – 25 – 25 – 26 cm long,
3 cm (1 1/4 ins) wide (incl. allowances).

Sewing

On front neck edge, work from inside to stitch each pleat, up to arrow marking. Lay pleats in direction of arrows as indicated on pattern and press pleat seams. Baste pleats to neck edge.

Stitch centre back seam, right sides together. Neaten seam allowances together and press to one side.

Back horizontal seam:

On horizontal edges of back, cut seam allowances up to 3 cm (1 1/4 ins) before each pointed end. Gather lower horizontal edge between asterisks. Stitch horizontal seam from the centre toward each side, tapering the stitching toward ends, like darts. Press seam allowances up.

Stitch shoulder seams, right sides together. Press seam allowances open.

Front and neck edges:

Turn front self-facings to outside, pin to neck edge, and press seam allowance to wrong side at shoulder seam. Fold bias strip for back neck edge lengthwise, right side facing out, and press. Pin folded bias strip to back neck edge so that fold edge of strip lies on garment piece, 7 mm (1/4 in) past seam line. Ends of strip lie on front facings. Stitch along marked neck edge. Trim seam allowances. Turn bias strips and facings to inside. Press edges. Sew facings to shoulder seams. Topstitch 5 mm (3/16 in) from back neck edge.

Front horizontal seam:

Cut seam allowances on horizontal edges of front up to 3 cm (1 1/4 ins) before each pointed end. Gather lower horizontal edge between asterisks. Lay vertical front edges together and sew together at lower end with a few stitches. Stitch horizontal seam from the centre toward each side, tapering stitching toward ends, like darts. Press seam allowances up.



Stitch side seams, right sides together and sleeve seams, right sides together. Turn sleeve hem allowances to inside, turn edge under by half hem width, and stitch. Turn dress hem allowance to inside, turn edge under, and stitch 4 cm (1 5/8 ins) from edge.

Set in sleeves, gathering sleeve caps and matching underarm points

Sew hooks and eyes to inner sides of front edges, 15 – 16 – 17 – 17 – 18 cm (6 – 6 3/8 – 6 3/4 – 6 3/4 – 7 ins) below corners of neck edge, then spacing remaining hooks and eyes approx. 5 cm (2 ins) apart.