

### 118 A,B Top and Dress

Sizes 34, 36, 38, 40, 42

Length of dress from waist 54 cm (21 1/4 ins)

### Materials

#### View A:

Batiste, 120 cm (47 ins) wide

length: 1.10 m (1 1/4 yds) for all sizes.

Elastic (baby elastic), 4 mm (a generous 1/8 in) wide

length: 0.50 – 0.50 – 0.50 – 0.55 – 0.55 m

(20 – 20 – 20 – 22 – 22 ins)

#### View B:

Batiste, 120 cm (47 ins) wide

length: 1.60 – 1.60 – 1.65 – 1.65 – 1.65 m

(1 3/4 – 1 3/4 – 1 7/8 – 1 7/8 – 1 7/8 yds).

Elastic (baby elastic), 4 mm (a generous 1/8 in) wide

length: 0.50 – 0.50 – 0.50 – 0.55 – 0.55 m

(20 – 20 – 20 – 22 – 22 ins)

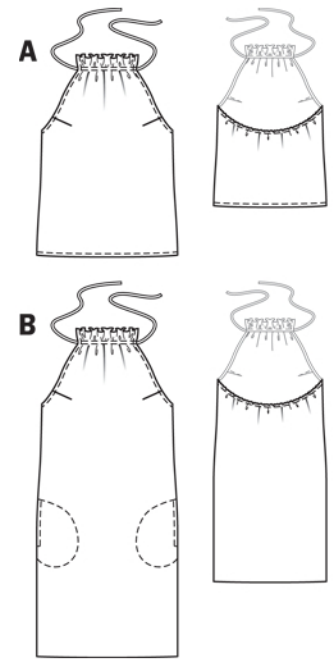
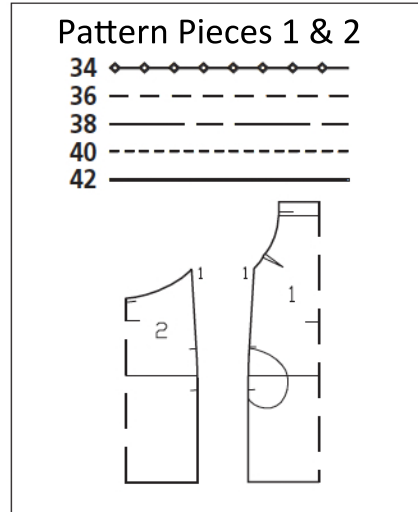
**Recommended fabrics:** Lightweight cotton fabrics with some body.

### Preparations

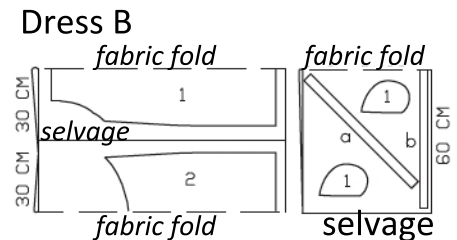
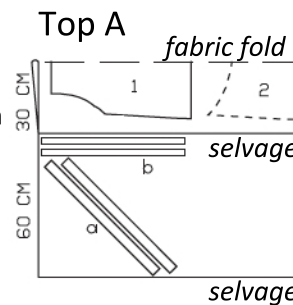
Print the pattern out on letter or A4 sized paper. It is **very** important to not scale or fit any of the pages, you must print the document in **actual size**. Your pattern will print on multiple pages, which you will then tile together. Arrange the sheets on a large, hard and flat surface matching up the numbers and letters (i.e. 6A to 6A). Cut or fold one of the sides and match the edge to it's corresponding side. Then, tape down in place so paper is secure.

Trace the pattern pieces from the pattern sheet following the lines and markings for the correct size and the correct style (118 A or B).

Trace the pocket piece from piece 1 as a separate pattern piece – it is the same for all sizes. The stitching lines for the drawstring casing on piece 1 are marked for size 34 only. For sizes 36 – 42, remark the stitching lines same distance from upper edge as for size 34.



Cut pieces 1 & 2 25 on a double layer of fabric. Use fabric with a width of 120cm.



burda style magazine patterns do not have seam allowance included.

Seam and hem allowance to be added:

Seams and edges 1.5 cm (5/8 in), upper front edge 5 cm (2 ins), hem for view A 1.5 cm (5/8 in), hem for view B 4 cm (1 5/8 ins).

### Cutting Out

Views A, B

1 front, on a fold 1x

2 back, on a fold 1x

Draft the following pieces not included in the pattern:

a) bias strip for front armhole edges and upper back edge, a total of 105 – 110 – 112 – 115 – 120 cm (41 1/2 – 43 1/2 – 44 1/4 – 45 1/4 – 47 1/4 ins) long, 4 cm (15/8 ins) wide (incl. allowances)

### Cutting Out Continued...

b) drawstring band,  
115 cm (45 1/4 ins) long,  
3 cm (1 1/4 ins) wide (incl. allowances).

View B only:

1 pocket piece 4x

### Sewing

#### View A

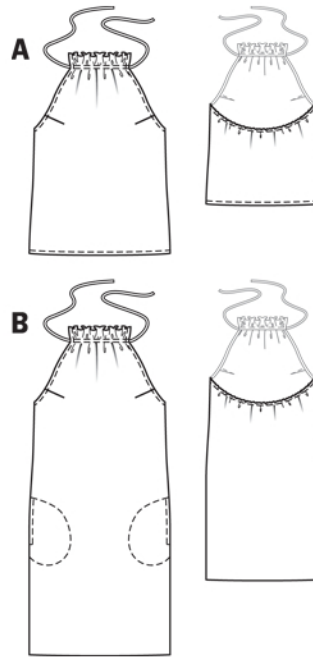
Stitch bust darts on front bodice. Fold the dart right sides together along the center dart line and stitch up dart leg lines, don't back stitch at the dart tip (this will cause puckering), simply taper off at dart tip leaving long thread tails. Tie thread tails in a knot. Press darts downward.

Stitch side seams, right sides together and press seams open.

Fold bias strip lengthwise, right side facing out, and press. Pin folded bias strip to armhole edges and upper back edge so that fold edge of strip lies on garment piece, 1 cm (3/8 in) past seam line. Stitch along seam line and trim seam allowances. Turn bias strip to inside and press the edge. Topstitch 7 mm (1/4 in) from upper back edge to form elastic casing. Insert elastic into casing. Stitch across ends of elastic along side seams for a finished measurement of 43 – 45 – 47 – 49 – 51 cm (17 – 17 3/4 – 18 1/2 – 19 1/4 – 20 1/4 ins).

Topstitch front armhole edges.

On upper front edge, press the wide allowance to inside, turn in to 4 cm (1 5/8 ins) wide, and baste. Topstitch upper front edge as marked, to form casing.



#### Drawstring Band:

Fold drawstring band in half lengthwise, wrong side facing in, and press. Unfold band again. Now fold each edge of band to the pressed fold and press again. Turn ends in. Then fold band in half lengthwise again and edgestitch fold edges together. Run drawstring through casing.

Press hem allowance to inside, turn under by half width, and stitch.

#### View B

In general, sew as for view A.

Sew inseam pockets in side seams:

Pin pocket pieces right sides together with seam allowances of pocket opening edges and stitch in place directly along marked seam lines. Topstitch 7 mm (1/4 in) from front pocket opening edges. Press pocket pieces forward and baste to wrong side of fronts. To stitch pocket pieces in place, pin paper pattern piece to each front and stitch along edges of pattern piece.

Press hem allowance to inside of and stitch down by hand.