

124 Coat

Sizes 72, 76, 80, 84, 88

Back length approx. 100 cm (39 1/2 ins)

Materials

Piqué,

width: 150 cm (59 ins)

length: 2.70 – 2.70 – 2.75 – 2.80 – 2.80 m
(3 – 3 – 31/8 – 31/8 – 31/8 yds).

Vilene Bias Tape/stay tape.

7 large sew-on snap fasteners.

A small piece of lining fabric.

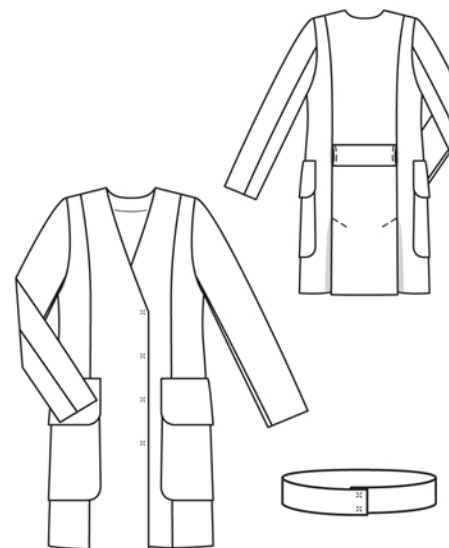
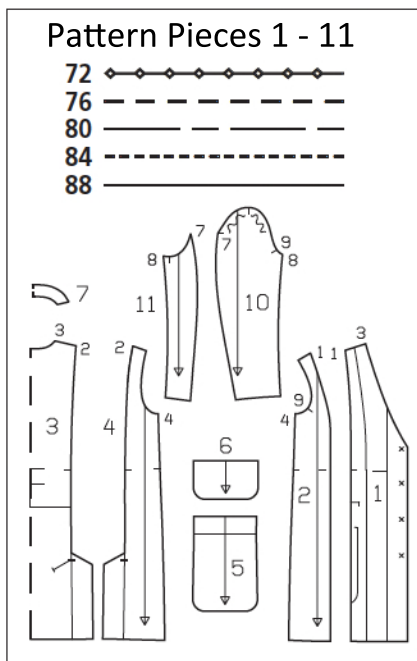
Recommended fabrics: Lightweight coat fabrics with some body.

Preparations

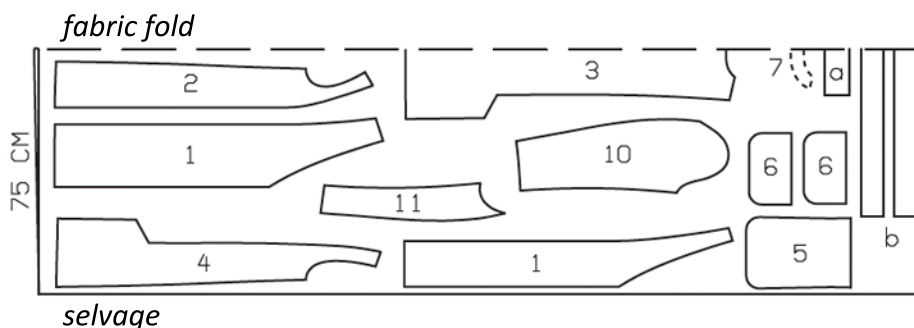
Print the pattern out on letter or A4 sized paper. It is **very** important to not scale or fit any of the pages, you must print the document in **actual size**. Your pattern will print on multiple pages, which you will then tile together. Arrange the sheets on a large, hard and flat surface matching up the numbers and letters (i.e. 6A to 6A). Cut or fold one of the sides and match the edge to it's corresponding side. Then, tape down in place so paper is secure.

Trace the pattern pieces from the pattern sheet following the lines and markings for the correct size and the correct style (124). This pattern also includes pattern pieces, lines and markings for style 123 that should be ignored.

Trace the facing from piece 1 as a separate pattern piece. The snap fasteners on piece 1 are marked for size 72. For the other sizes, mark the top snap the same distance from neck edge as for size 72. The bottom snap is the same for all sizes. Space the other snaps evenly in between. The stitching line at the slit on piece 3 is marked for size 72. For sizes 76 – 88, remark the stitching line according to the size lines



Cut pieces 1 -11 on a double layer of fabric. Use fabric with a width of 150cm.



Cutting Out

burda style magazine patterns do not have seam allowance included.

Seam and hem allowance to be added:

Seams and edges 1.5 cm (5/8 in),
hem and sleeve hems 4 cm (1 5/8 ins).

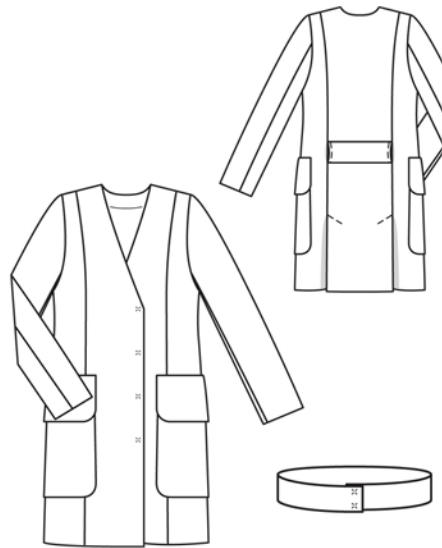
centre front	2x
front facing	2x
side front	2x
centre back, on a fold	1x
side back	2x
pocket	2x
flap	4x
back facing, on a fold	1x
10 upper sleeve	2x
11 under sleeve	2x

Cutting Out Continued...

Draft the following pattern pieces not included in the pattern sheet:

- a) back casing,
length: 27.5 – 28 – 28.5 – 29 – 29.5 cm
(10 3/4 – 11 1/8 – 11 1/4 – 11 1/2 – 11 3/4 ins)
width: 7.5 cm (3 ins)
- b) 2 belt pieces,
length: 102 – 106 – 110 – 114 – 118 cm
(40 1/4 – 41 3/4 – 43 1/2 – 45 – 46 1/2 ins)
width: 7 cm (2 3/4 ins)

Vilene Bias Tape/stay tape: Iron to wrong side of neck edges.



sew in place by hand. Set in sleeves, easing sleeve caps.

Stitch back facing to shoulder edges of front facings. Pin facing right sides together with dress. Stitch along front and neck edges. Trim seam allowances, trimming corners diagonally. Turn facing forward/up and stitch to seam allowances, close to joining seam. Turn facing to inside and press edges.

For the hem edge, unfold front facings and back slit facings. Press hem allowance to inside and sew in place by hand. Turn facings to inside again and sew to hem allowance. Sew inside facing edge to shoulder seams.

Cover snap fastener pieces with lining fabric. Sew top halves of snaps to inside of right front as marked, taking even stitches and exiting needle on right side of fabric. Pin right front to left front, matching centre fronts. Sew bottom halves of snaps to left front to match top halves. Also fasten inside upper left front corner to right facing, with one snap.

Belt and back casing:

Stitch belt pieces right sides together, leaving a section of seam open, for turning. Turn belt right side out and press edges. Sew opening closed. Fasten belt with 2 snaps. Turn allowances on narrow edges of casing strip to wrong side, turn edges under, and edgestitch in place. Press allowances on long edges to inside. Pin casing to coat centre back, at abutting lines. Edgestitch long edges in place. Run belt under back casing.

Sewing

Stitch side fronts to centre fronts (seam number 1). Stitch side backs to centre back (seam number 2), right sides together leaving slits open. Press seam allowances and slit facings onto centre back. Press allowances on long edges of underlap to wrong side and stitch in place. Topstitch centre back at an angle, at ends of slits, catching underlaps.

Stitch side seams and shoulder seams, right sides together. Press seam allowances open.

Patch pockets:

Press self-facing on upper edge of each pocket piece to wrong side. Press allowances on remaining pocket edges to wrong side. Pin pockets to dress at abutting lines and sew in place by hand, with small stitches, or edgestitch in place, by machine.

Flaps:

Stitch each upper flap piece to lower flap piece, along side and lower edges, right sides facing. Trim seam allowances. Turn right side out. Trim allowances on joining edges to 1 cm (3/8 in) and neaten together. Stitch flaps in place, along joining lines above pockets and press down. Hand-sew side flap edges in place, approx. 1 cm (3/8 in) long, beginning at joining seam.

Sleeves:

Stitch sleeve seams. Press seam allowances open. Press sleeve hem allowances to inside and