

128 Top

Sizes 36, 38, 40, 42, 44

Back length approx. 63 cm (25" ins).

Materials

Cotton poplin,

150 cm (59") wide:

sizes 36, 38 (10, 12): 1.20 m (48"),

size 40 (14): 1.25 m (50"),

sizes 42, 44 (16, 18): 1.30 m (52").

Bias tape, 4 cm (15/8") wide, approx. 1.50 m (60").

1 button.

Recommended fabrics: Top fabrics with some body.

Preparations

Print the pattern out on letter or A4 sized paper. It is **very** important to not scale or fit any of the pages, you must print the document in **actual size**. Your pattern will print on multiple pages, which you will then tile together. Arrange the sheets on a large, hard and flat surface matching up the numbers and letters (i.e. 6A to 6A). Cut or fold one of the sides and match the edge to it's corresponding side. Then, tape down in place so paper is secure.

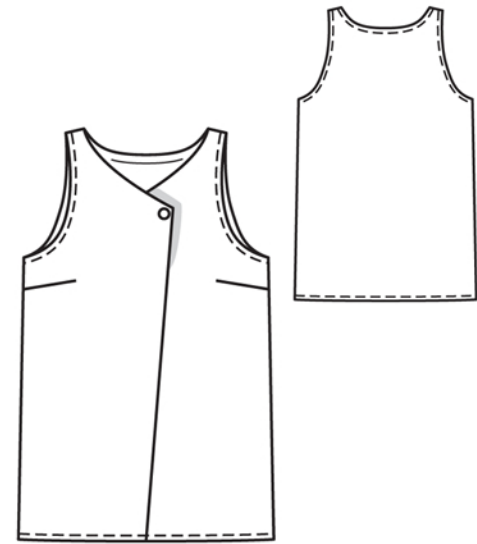
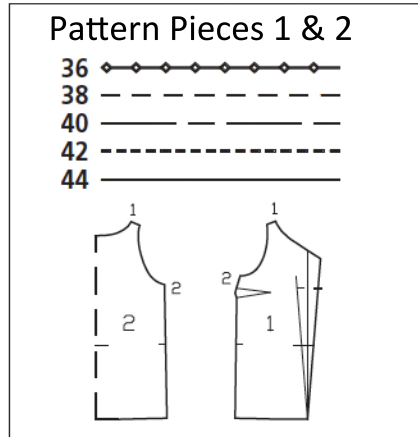
Trace the pattern pieces from the pattern sheet following the lines and markings for your size.

burda style magazine patterns do not have seam allowance included.

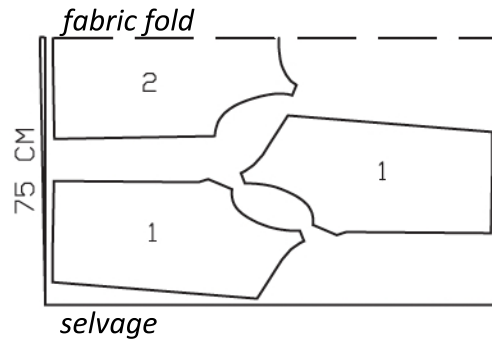
Seam and hem allowance to be added:

1 cm (3/8") on neck and armhole edges and (5/8") at all other seams and edges.

Use tailor's chalk to draw seam and hem allowances along edges of pattern pieces (image 1).



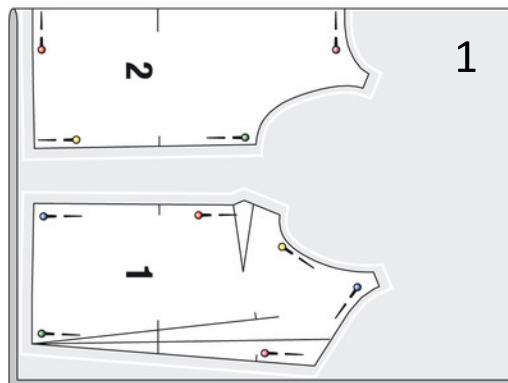
Cut pieces 1 & 2 on a double layer of fabric. Use fabric with a width of 150cm.



Cutting Out

Fold fabric as shown in the cutting layout, right side facing in. Lay pattern pieces 1 and 2 on fabric and pin in place. Then cut out pieces 1 again for the inner front pieces, from the remaining fabric.

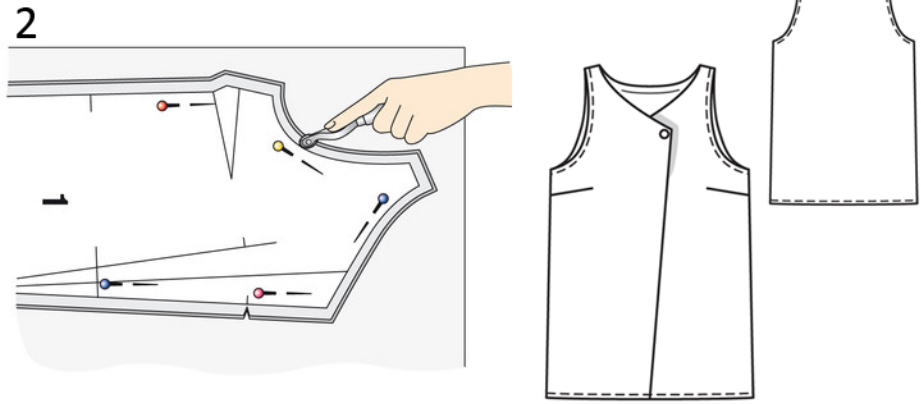
- | | |
|-----------------------|----|
| 1 front (outer layer) | 2x |
| 1 front (inner layer) | 2x |
| 2 back, on fold | 1x |



Cutting Out Continued...

Transfer pattern markings:

Use Burda dressmaker's carbon paper and a tracing wheel to transfer the following to the inner front pieces and the back piece: pattern outlines (seam and hem lines), darts, centre front, placement line, and seam mark. To mark the slit marks, make small clips in the edges of the seam allowances (5 mm / 3/16" long clips are sufficient)(image 2).



Sewing

Double the front pieces: (3)

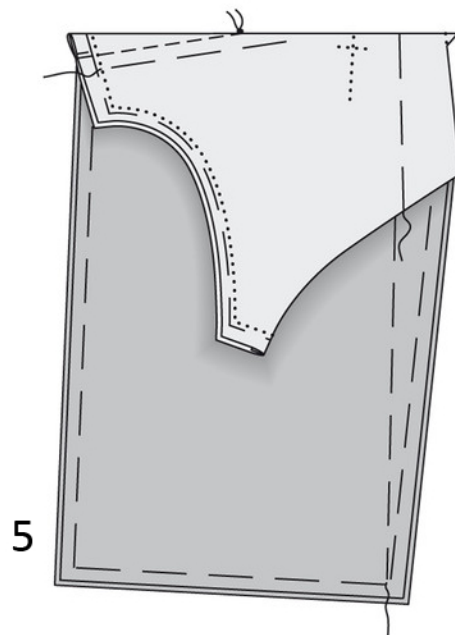
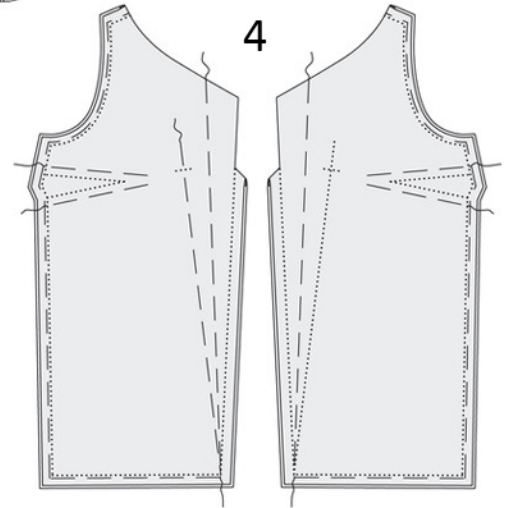
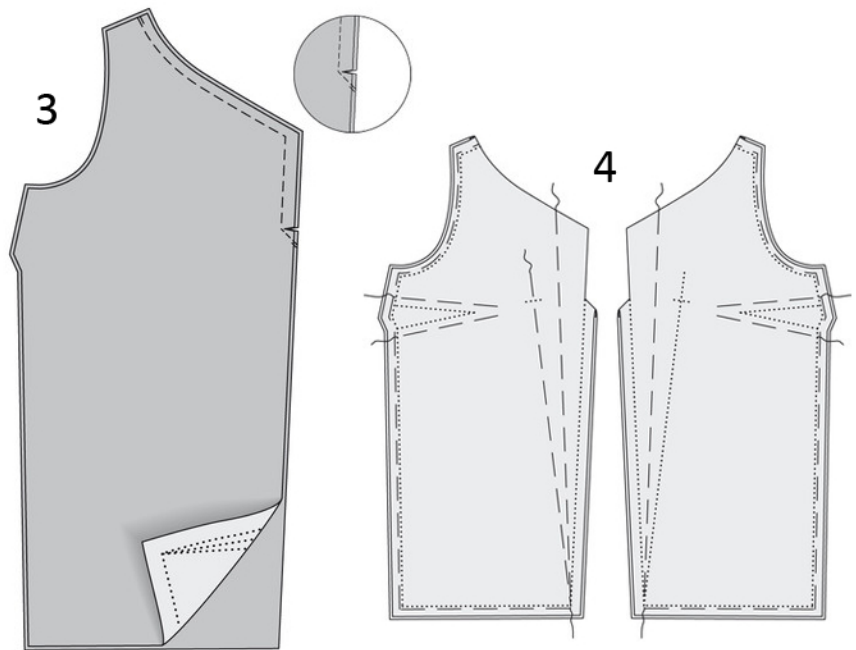
Lay each inner front piece on an outer front piece, with the right sides of both pieces facing up. Pin together along neck edges and along front edges, as far as slit mark. Stitch as pinned, stitching 1 cm (3/8") from neck edge and 1.5 cm (5/8") from front edge. At seam mark, angle stitching toward edge of seam allowance. Trim seam allowances, trimming diagonally across corners.

Baste layers together. (4)

Turn front pieces right side out and press. Treat each front as one layer of fabric from now on. To do this, baste the fabric layers together next to the dart lines and along the open edges. Hand baste through both fabric layers along the centre front lines, seam marks, and placement line (only on left front) to make these lines visible on the outer front pieces.

Bust darts. (5)

Fold each front along centre of dart, right side facing in. Pin dart lines together. Stitch lines together, beginning at side edge and stitching toward point. Tie-off beginning of seam with backstitching. Do not backstitch at the point of the dart. Instead, knot the threads together here. Press bust darts down.



Sewing Continued...

Front section seams. (6)

Below the slit mark, finish edges of seam allowances together. Lay right front (outer side) on left front (outer side) so that the marked seam line on front edge meets the placement line. Stitch along the marked front edge, from the slit mark to the lower edge.

Button. (7)

Fold the right front over the seam. Press. Baste the lower edges together. At the neck edge, pin the fronts together, matching the centre fronts. Sew the button to the upper corner of the neck edge on the right front, thereby also catching left front.

Shoulder seams. (8)

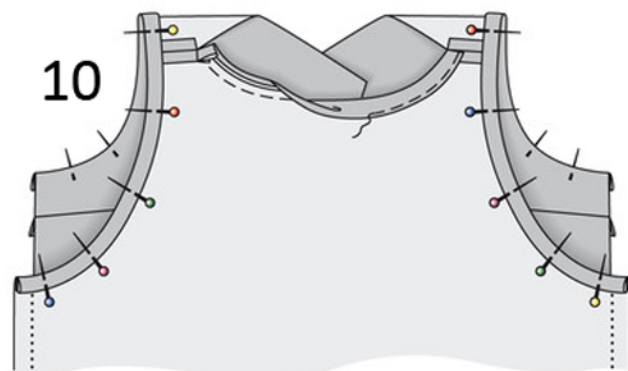
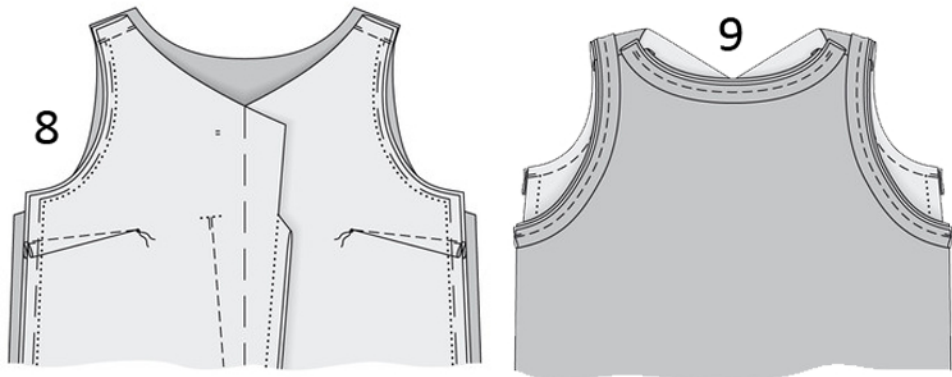
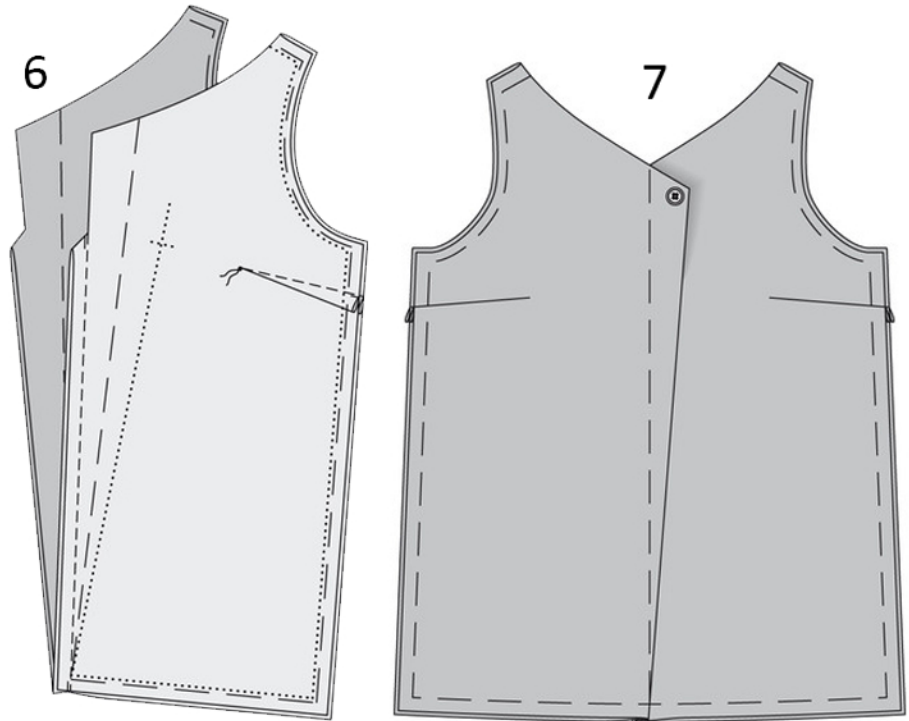
Lay the front on the back, right sides facing. Pin the shoulder seams – the seam allowance of back neck edge extends. Stitch shoulder seams as pinned, tying-off beginning and end of each seam with backstitching. Finish edges of seam allowances. Press seams open.

Neck edges. (9)

Fold bias tape in half lengthwise, wrong side facing in. Press. Pin bias tape to back neck edge and to armhole edges, right sides facing, matching open edges of bias tape to edges of seam allowances. Working from the inner side, stitch along the marked back neck and armhole edges

Armhole. (10)

Trim seam allowances. On back neck edge, turn the bias tape up and turn the ends under at the shoulder seams. Turn bias tape to inside on neck and armhole edges. Press these edges. Pin bias tape in place. First stitch 5 mm (5/16") from the back neck edge only.



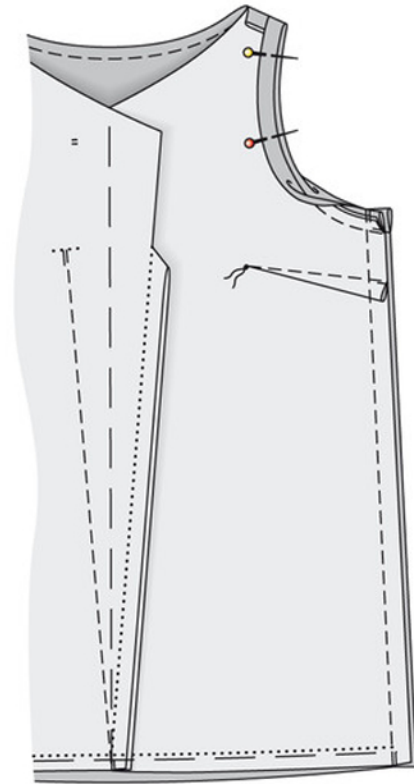
Sewing Continued...**Side seams. (11)**

At armhole edges, turn the bias tape up again. Lay the front on the back, right sides facing. Pin the side seams, also pinning ends of the bias tape together. Stitch as pinned. Press seams open and finish edges of seam allowances. Turn the bias tape to the inside again. Topstitch 5 mm (5/16") from each armhole edge.

Hem. (12)

Turn hem allowance to inside and press. Turn raw edge under to a hem width of 1 cm (3/8") and edgestitch the hem in place.

11



12

