

127A Jacket

Sizes 36, 38, 40, 42, 44

Back length approx. 63 cm (25 ins)

Materials

Twill fabric with widthwise stretch,
width: 135 cm (53 ins)
length: 1.50 – 1.55 – 1.55 – 1.60 – 1.60 m
(1 3/4 yds).

Vilene/Pellon G 785.

Vilene Bias Tape/ stay tape.

1 button.

2 large sew-on snap fasteners.

Small piece of lining fabric to cover the snap fasteners.

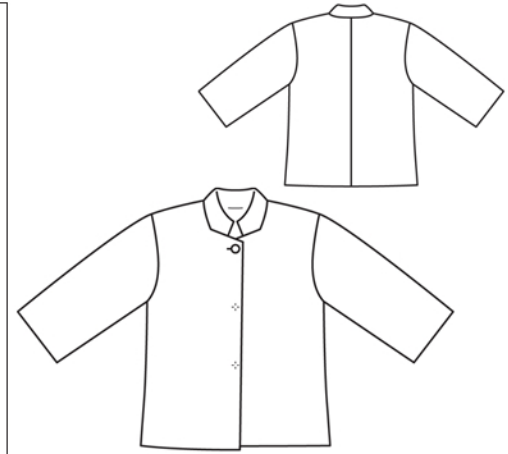
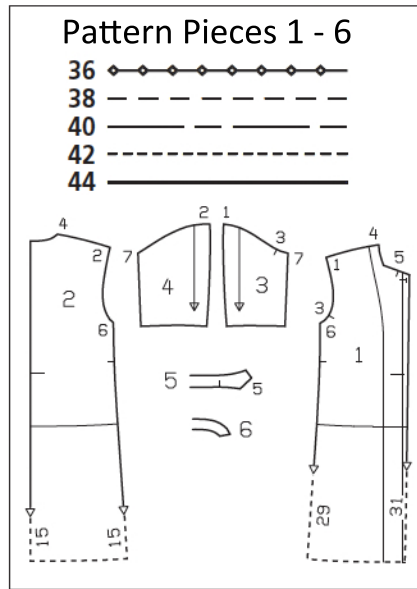
Recommended fabrics: Densely woven fabrics with some body.

Preparations

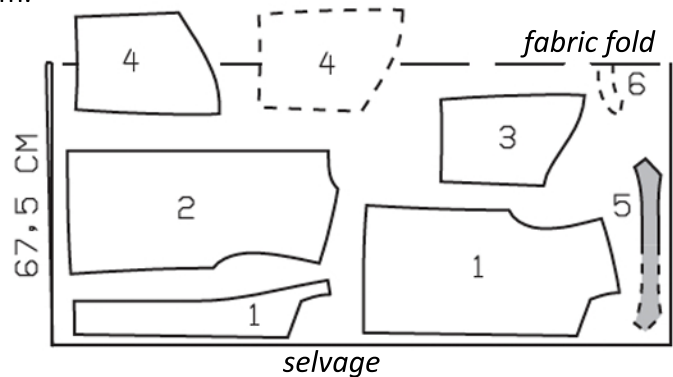
Print the pattern out on letter or A4 sized paper. It is **very** important to not scale or fit any of the pages, you must print the document in **actual size**. Your pattern will print on multiple pages, which you will then tile together. Arrange the sheets on a large, hard and flat surface matching up the numbers and letters (i.e. 6A to 6A). Cut or fold one of the sides and match the edge to it's corresponding side. Then, tape down in place so paper is secure.

Trace the pattern pieces from the pattern sheet following the lines and markings for the correct size and the correct style (127A). This pattern also includes pattern pieces, lines and markings for style 127B and 127C that should be ignored.

The buttonhole on piece 1 is marked for size 36. For sizes 38 – 44, mark the buttonhole the same distance from neck edge as for size 36.



Cut pieces 1 - 6 on a double layer of fabric. Use fabric with a width of 135cm.



burda style magazine patterns do not have seam allowance included.

Seam and hem allowance to be added:

Seams and edges 1.5 cm (5/8 in),
hem and sleeve hems 4 cm (1 5/8 ins).

Cutting Out

1 front	2x
front facing	2x
2 back	2x
3 sleeve front	2x
4 sleeve back	2x
5 collar, on a fold	2x
6 back facing, on a fold	1x

Cutting Out Continued...

Interfacing:

See shaded area on pattern layout. Fuse interfacing to the wrong sides of piece 5. Also, Iron Vilene Bias Tape/stay tape to wrong side of neck and armhole edges and wrong side of front shoulder seam edges.

Sewing

Stitch centre back seam, right sides together and press seam allowances open.

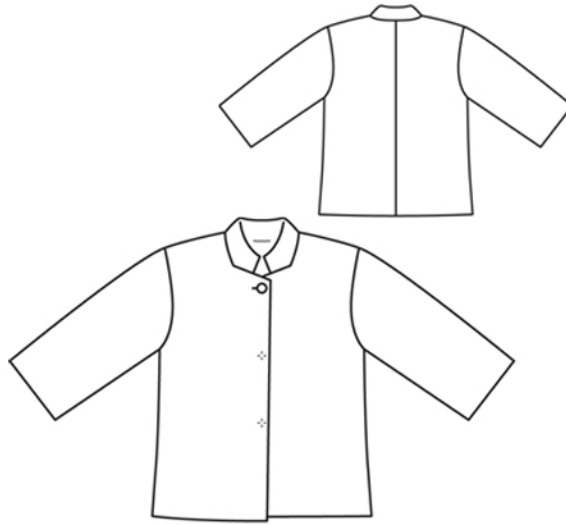
Stitch sleeve fronts to fronts and sleeve backs to back, along armhole. Press seam allowances away from sleeves.

Stitch shoulder seams and top sleeve seams as continuous seams (from neck to sleeve hem). Stitch facing seams, right sides together and press seam allowances open.

Pin facing right sides together with jacket. Stitch along front and neck edges, to marking. Trim seam allowances, trimming corners diagonally. Leave facing lying right sides together with jacket for now.

Stitch collar pieces right sides together along outer edges, beginning and ending stitching exactly on seam line of joining edge. Turn collar right side out and press. Lay collar between jacket and facing. Stitch outer collar piece to neck edge of jacket, from marking to corner. Clip seam allowances of fronts into corners. Stitch long edge of outer collar piece to neck edge of jacket. Stitch inside collar piece to facing, clipping seam allowance of facing into corners. Press collar joining seams open. Turn facing to inside and press edges. Pin collar joining seams together exactly, from corner to corner. Turn facing up and stitch seam allowances together, close to seam. Turn facing down again.

Stitch side seams and under sleeve seams as continuous seams. Sewing from jacket hem to sleeve hem.



Unfold facings at hem edge. Press hem allowance to inside and sew in place by hand. Turn facings to inside again and sew to hem allowance and to seams.

Press sleeve hem allowances to inside and sew in place by hand.

Work buttonhole in right front jacket.

Below buttonhole, mark positions of 2 snap fasteners, at centre front, spaced
14 – 14.5 – 15 – 15.5 – 16 cm
(5 1/2 – 5 3/4 – 6 – 6 1/8 – 6 3/8 ins) apart.

Cover snap fastener halves with lining fabric. Sew top halves of snaps to inside of right front, taking even stitches and exiting needle on right fabric side. Sew bottom halves of snaps to left front edge.