

121C Shorts

Sizes 36, 38, 40, 42, 44

Side length approx. 45 cm (18 ins)

Upper edge of shorts sits 4 cm (15/8 ins) above waist at centre back and

2.5 cm (1 in) above waist at centre front

Hem approx. 65 cm (26 ins)

Materials

Piqué,

width: 150 cm (59 ins)

length: 0.80 m (7/8 ys) for all sizes.

A piece of lining fabric, approx. 30 x 35 cm (12 x 14 ins) for pocket pieces.

Vilene Bias Tape/stay tape.

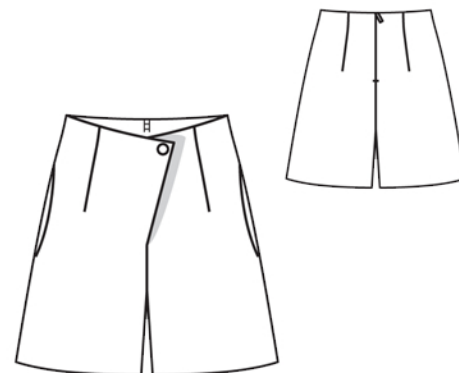
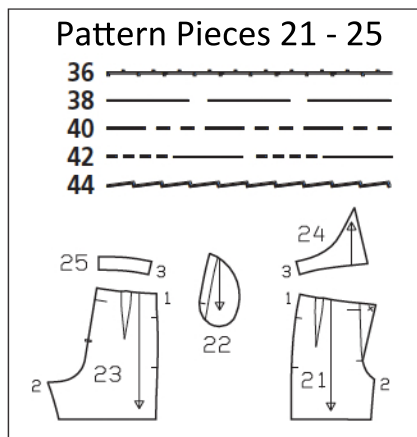
1 invisible zip, 22 cm (9 ins) long, and a special presser foot. 1 button.

Recommended fabrics: Lightweight trouser fabrics with some body, of cotton or blends.

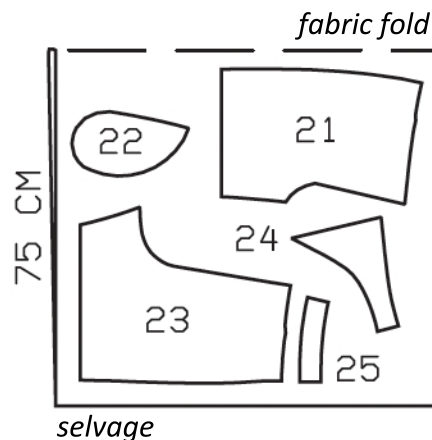
Preparations

Print the pattern out on letter or A4 sized paper. It is **very** important to not scale or fit any of the pages, you must print the document in **actual size**. Your pattern will print on multiple pages, which you will then tile together. Arrange the sheets on a large, hard and flat surface matching up the numbers and letters (i.e. 6A to 6A). Cut or fold one of the sides and match the edge to it's corresponding side. Then, tape down in place so paper is secure.

Trace the pattern pieces from the pattern sheet following the lines and markings for the correct size and the correct style (121C). This pattern also includes pattern pieces, lines and markings for style 121A, 121B and 122 that should be ignored.



Cut pieces 21 - 25 on a double layer of fabric. Use fabric with a width of 150cm.



burda style magazine patterns do not have seam allowance included.

Seam and hem allowance to be added:

Seams and edges 1.5 cm (5/8 in), hem 4 cm (15/8 ins).

Cutting Out

Piqué:

21 shorts front	2x
22 pocket piece	2x
23 shorts back	2x
24 front facing	2x
25 back facing	2x

Lining:

22 pocket piece	2x
-----------------	----

Cutting Out Continued...

Vilene Bias Tape/stay tape:
Iron to wrong side of upper and front edges.

Sewing

Stitch darts in front and back pieces and press towards centre front and centre back.

Stitch side seams, right sides together, not stitching across pocket openings. On two pocket pieces, lay facings on joining edges, with wrong side facing right side, and stitch in place.

Inseam pockets:

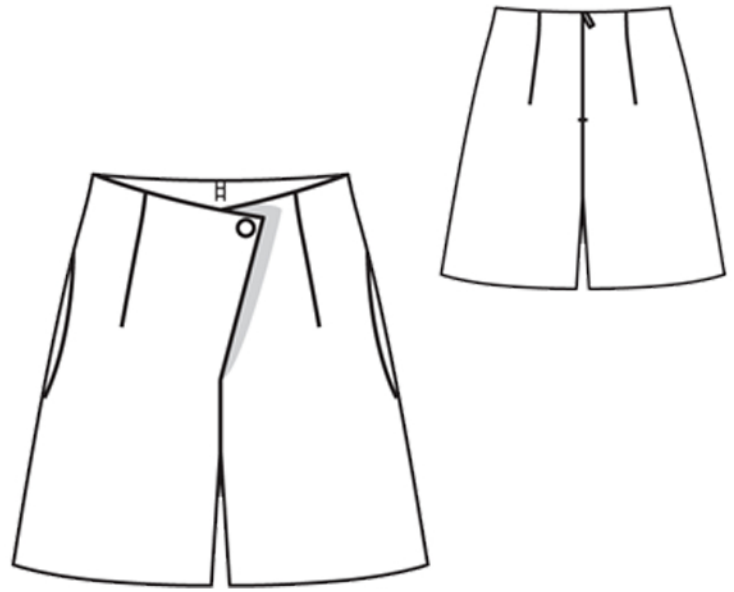
Stitch pocket lining pieces to shorts fronts along pocket opening. Stitch pocket pieces of main fabric to shorts backs along pocket opening. Press pocket pieces forward, trim even, and stitch together, sewing the pocket closed.

Stitch inside leg seams, right sides together from hem to crotch point. Press seam allowance open

Sew zipper in centre back slit edges:

Open the zip and push the coil back with your thumbnail to reveal the seam marking between the tape and the coil. Place the open zip right side down on the right fabric side of one slit edge. Pin the top end of the zip tape in place. The bottom end of the zip will extend past the marked end of the slit. Place the presser foot on the zip so that the coil is in the notch to the right of the needle. Stitch zip in place, from the top to the marked end of the slit. Close zip. Place the other zip tape face down on the opposite slit edge and pin in place at the top. Open zip again. Place the presser foot on the top end of the zip so that the coil is in the notch to the left of the needle. Sew the zip in place, from the top to the end of the slit. Close zip.

Now stitch the seam below the zip, from bottom to top. Turn the loose lower end of the zip out of the way, over the seam allowance. Stitch as



close as possible to the last stitches of the zip seams. Trim away excess zip and bind the end with a scrap of fabric.

Upper and front edges, centre seam:

Stitch side seams of facings. Lay facings right sides together with shorts and pin to upper and front edges. At zip slit, turn facing ends back, approx. 5 mm (3/16 in) before edge of slit, and pin to upper edge. At edges of back slit, turn allowances to outside and pin to upper edge, over facing. Stitch along upper edge and each slanted front edge, to marking.

Trim seam allowances, trimming corners diagonally. Turn lower edge of front facings back at seam ends and pin. Pull one leg into the other, with right sides facing. Stitch centre front seam below seam mark and stitch centre back seam to zip. Remove pins. Turn back slit allowances and facings to inside. Sew facings to zip tapes and to seams. Topstitch close to front and upper edges of shorts.

Lay right shorts front on left shorts front, matching centres. Sew upper corner of right shorts front in place, with the button.

Press hem allowances to inside and sew in place by hand.