

101A Dress

Sizes 36, 38, 40, 42, 44

Length from waist: 41 cm (16 1/4 ins)

Materials

Cotton poplin,

width: 150 cm (59 ins)

length: 1.20 – 1.20 – 1.25 – 1.30 – 1.30 m
(1 3/8 – 1 3/8 – 1 1/2 – 1 1/2 – 1 1/2 yds)

Vilene/ Pellon G 785.

2 metal zips, 15 cm (6 ins) long.

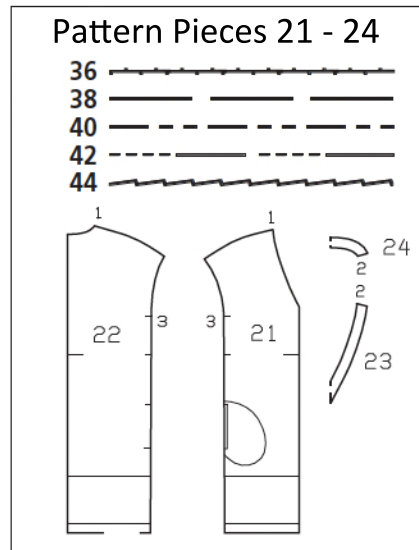
Recommended fabrics: Dress fabrics with some body.

Preparations

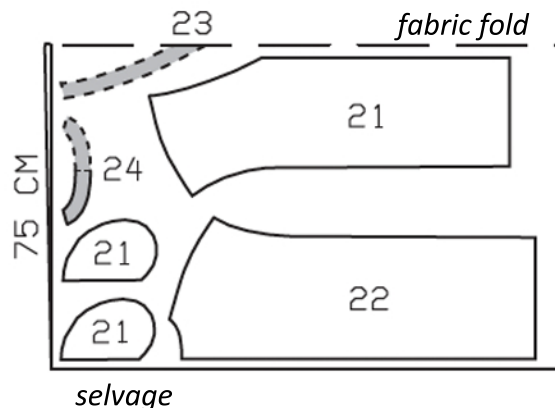
Print the pattern out on letter or A4 sized paper. It is **very** important to not scale or fit any of the pages, you must print the document in **actual size**. Your pattern will print on multiple pages, which you will then tile together. Arrange the sheets on a large, hard and flat surface matching up the numbers and letters (i.e. 6A to 6A). Cut or fold one of the sides and match the edge to it's corresponding side. Then, tape down in place so paper is secure.

Trace the pattern pieces from the pattern sheet following the lines and markings for the correct size and the correct style (101A). This pattern also includes pattern pieces, lines and markings for style 101B, 101C (longer versions of this dress), and 102 that should be ignored.

Trace the pocket piece from piece 21 as a separate pattern piece – it is the same for all sizes. The pocket lines on piece 21 are marked in full for size 36 only. For the other sizes, complete the pocket lines accordingly.



Cut pieces 21 - 24 on a double layer of fabric. Use fabric with a width of 150cm.



Cutting Out

Cotton Poplin:

21 front	2x
pocket piece	4x
22 back	2x
23 front neck facing, on a fold	1x
24 back neck facing, on a fold	1x

Interfacing:

23 front neck facing, on a fold	1x
24 back neck facing, on a fold	1x

burda style magazine patterns do not have seam allowance included.

Seam and hem allowance to be added:

Seams and edges 1.5 cm (5/8 in).

Hem for view A 5 cm (2 ins).

Cutting Out Continued...

Interfacing:

Fuse interfacing to wrong sides of pattern pieces 23 and 24.

Also, iron strips of interfacing, approx. 3 cm (1 1/4 ins) wide, to wrong side of fabric, over pocket markings.

Sewing

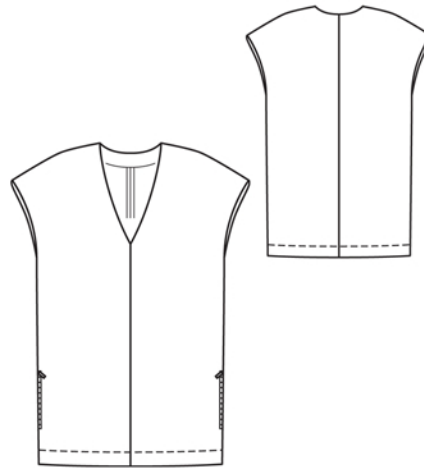
On front pieces, stitch centre seam, beginning stitching on upper edge, exactly at marked neck edge. Stitch centre back seam, right sides together. Stitch shoulder seams together of dress and neck facing. Press seam allowances open.

Neck edge:

Stitch neck facing right sides together with neck edge and trim seam allowances. At centre front, clip allowances close to seam. Turn facing up and stitch to seam allowances, close to seam. Turn facing to inside. Press edge. Sew inside facing edge to seams.

Zip pockets and side seams:

Pin one pocket piece to each front, over lines marked for zipper, right sides facing. Work from wrong side to stitch along marked lines. Trim seam allowances and clip diagonally into corners. Turn pocket pieces to inside. Press edges. Pin zippers under seamed pocket opening edges so that zipper teeth are visible and so that second zipper tape extends, as seam allowance. Edgestitch zips in place. Lay each second pocket piece underneath and baste to extending zipper tape. Stitch inside edges of pocket pieces together. Stitch side seams below marking (seam number 3). At each pocket, stitch back piece to zipper tape and to pocket. Press side seam allowances open, above and below pockets, clipping seam allowances of front at pocket piece edges to do so. Topstitch back close to pocket opening edges.



Press allowances on armhole edges to inside, turn raw edges under, and sew in place by hand.

Press hem allowance to inside and stitch in place 4 cm (1 5/8 ins) from lower edge.