

118 Jacket

Burda tall sizes 72, 76, 80, 84, 88

Back length 77 cm (30 1/2 ins)

3/4 – sleeves, 12 cm shorter than normal

Belt length 70 – 74 – 78 – 82 – 86 cm

Materials

Jacket: Twill,

width: 150 cm (59 ins)

length: 2.05 – 2.10 – 2.15 – 2.20 – 2.25 m

(2 1/4 – 2 3/8 – 2 1/2 – 2 1/2 – 2 5/8 yds).

A piece of lining, approx. 45 x 30 cm (18 x 12 ins), for the pockets.

Vilene Bias Tape/ stay tape.

Pre-folded cotton bias tape, 2 cm (3/4 in) wide and 6.00 m (6 5/8 yds) long.

Flat cord, 5 mm (3/16 in) wide and 0.20 m (1/4 yd) long.

3 large sew-on snap fasteners.

Belt: Elastic, 5 cm (2 ins) wide and 0.50 – 0.55 – 0.60 – 0.60 – 0.65 m (20 – 20 – 24 – 24 – 26 ins) long.

A piece of suede leather, approx. 30 x 25 cm (12 x 10 ins).

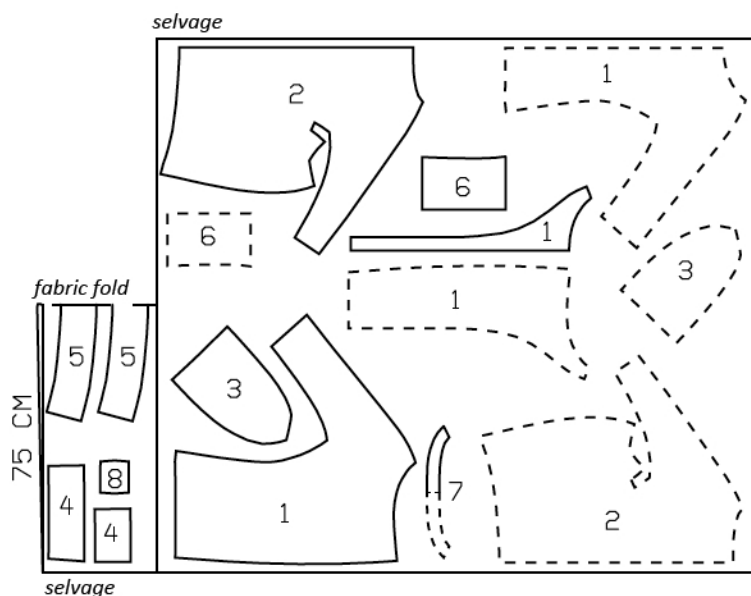
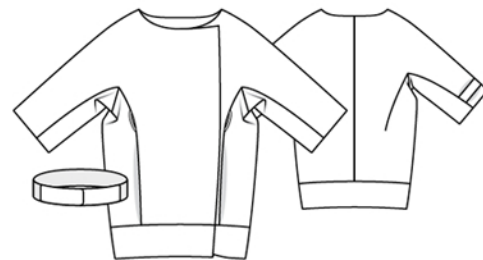
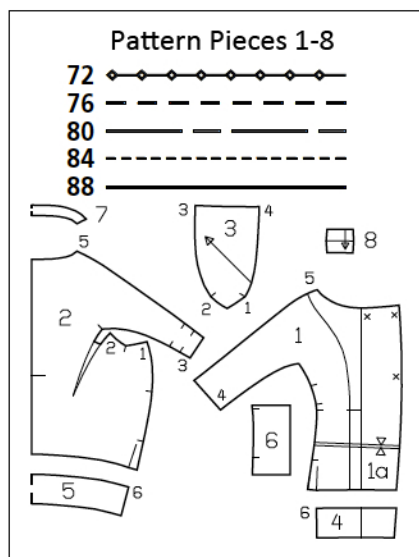
A piece of hook and loop tape, 2 cm (3/4 in) wide. Glue stick.

Recommended fabrics: Jacket fabrics with some body.

Preparations

Print the pattern out on letter or A4 sized paper. It is **very important** to not scale or fit any of the pages, you must print the document in **actual size**. Your pattern will print on multiple pages, which you will then tile together. Arrange the sheets on a large, hard and flat surface matching up the numbers and letters (i.e. 6A to 6A). Cut or fold one of the sides and match the edge to it's corresponding side. Then, tape down in place so paper is secure.

Trace the pattern pieces from the pattern sheet following the lines and markings for your size.



Fold the fabric as shown in the pattern layout. Right side faces in on a double layer of fabric. Right side faces up on a single layer of fabric. Cut right and left pieces as opposites.

On front and front waistband, note different lines for right and left fastening edges. Trace front facing from piece 1 as a separate pattern piece. The snap fasteners marked on piece 1 are for size 72. For sizes 76 – 88, mark the top pair of fasteners the same distance from upper edge as for size 72. The bottom snap is in the same place for all sizes.

burda style magazine patterns do not have seam allowance included.

Seam and hem allowance to be added:

Seams and edges 1.5 cm (5/8 in), sleeve hems 4 cm (1 5/8 ins).

Cutting Out

Jacket

Twill:

- 1 front with integrated sleeve 2x
- front facing 2x
- 2 back with integrated side piece and sleeve 2x
- 3 lower sleeve piece 2x
- 4 front hem band 4x
- 5 back hem band, on a fold 2x
- 6 pocket piece 2x
- 7 back facing, on a fold 1x
- 8 sleeve tab 2x

Lining: piece 6.

Vilene Bias Tape/ stay tape: Iron to wrong side of neck edges.

Belt

Suede leather:

- 2 right front belt pieces, 15 cm (6 ins) long, and
- 2 left front belt pieces, 18 cm (7 ins) long, all 5.5 cm (2 1/4 ins) wide.

Cut one right and one left front belt piece each with 1 cm (3/8 in) wide seam allowances. Cut the other two belt pieces without seam allowances. Interface the belt pieces with seam allowances.

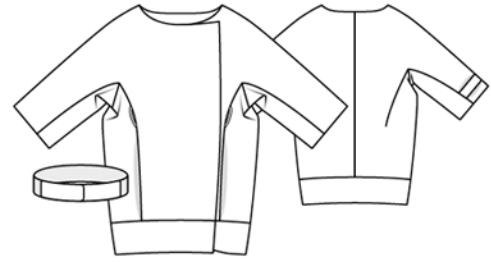
Sewing

Bind seam edges: Cut the pre-pressed bias tape in half along the centre – it is now 1 cm (3/8 in) wide when folded double. Unfold the bias tape. Pin to edge of seam allowance and stitch 5 mm (3/16 in) from edge. Then fold bias tape over edge and pin in place, without turning in. Work from right side to topstitch bias tape close to joining seam.

Stitch the centre back seam. Press seam allowances open and bind edges with bias tape.

• Fold sleeve tabs on fold line, with right side facing in. Stitch long edges together. Turn tabs right side out. Press edges. Baste tabs to sleeve backs, between markings.

On back pieces, cut darts along centre, between marked lines, approx. 10 cm (4 ins) long. Stitch lower sleeve pieces right sides together with integrated side sections of back, from seam



number 1 to marking. Clip seam allowances of sides at the marking. Then stitch sleeve pieces to sides, from marking to dart line (seam number 2). Trim seam allowances of joining seam to 1 cm (3/8 in) wide, press toward sides, and baste.

Stitch lower sleeves to integrated back sleeves, from seam number 3. Match marking of back to joining seam of lower sleeve pieces. Clip seam allowance of back at marking. Stitch darts. Press seam allowances toward integrated sleeves and press darts toward centre. Bind seam allowances and bind dart allowances, approx. 10 cm (4 ins) long.

For the belt carriers, cut the cord into two equal pieces. Pin belt carriers to section seam line of fronts, between markings. Stitch lower sleeve pieces to integrated front sleeves, from seam number 4, then stitch integrated back side pieces to fronts. Clip the seam allowances of the fronts into corners and do not stitch across the pocket openings in the section seams.

Inseam pockets: Pin pocket pieces right sides together with seam allowances of pocket opening edges – pocket lining pieces in front and pocket pieces of main fabric in back. Stitch pocket pieces in place, close to side seam and along seam line at pocket opening edge. Press pocket pieces forward and stitch together. Bind pocket pieces with bias tape. Press seam allowances of section seams toward fronts and integrated sleeves. Bind allowances.

On lower edge of jacket, make folds over front section seams, so that fold edges meet placement lines. Baste folds to lower edge. Press fold edges, up to upper end of pocket openings.

Stitch shoulder seams (seam number 5) and top sleeve seams as continuous seams. Press allowances onto back and bind allowances.

Bind edge of hem allowance on sleeves. Press sleeve hem allowances to inside and sew in place by hand.

Stitch side seams on waistband pieces. Press seam allowances open. Stitch outer waistband unit to lower edge of jacket. Press the seam allowances up.

Stitch shoulder seams of facing. Bind inside facing edge. Stitch lower edges of front facings to inner waistband unit. Clip seam allowance of waistband 3 cm (1 1/4 ins) from inside edge of facing. Toward front edge, press seam allowances open. Pin facing right sides together with jacket and pin waistband edges together. Stitch along lower waistband edge, and along front and neck edges. Trim seam allowances, trimming corners diagonally. Turn facing and inside

Sewing Continued...

waistband to inside and press edges. Lay inside waistband edge flat over joining seam, not turning edge under. Stitch seam allowances together close to joining seam, stitching as far as possible on front edges. Bind allowances of waistband joining seam. Sew inside facing edge to seams.

Cover snap fastener pieces with lining fabric. Sew top halves of snaps to right front facing as marked, not exiting needle on right side of fabric. Sew bottom halves of snaps to left front to match.

Belt

On belt pieces with no interfacing, round off corners slightly. Cut two pieces of hook and loop tape, each 5.5 cm (2 1/4 ins) long. Lay the loop sides of the tape next to each other and stitch to leather side of interfaced right belt piece (inside piece), 2 cm (3/4 in) from narrow front edge, in lengthwise direction. Measure and mark 46 – 50 – 54 – 58 – 62 cm (18 1/8 – 19 3/4 – 21 1/4 – 23 – 24 1/2 ins) on elastic. Lay the belt pieces with no interfacing on the ends of the elastic and edgestitch in place. Lay the belt pieces with no interfacing on the interfaced belt pieces and glue in place with glue stick. Stitch one hook piece of the hook and loop tape (the other hook piece can be discarded) widthwise to top side of left belt piece, 1 cm (3/8 in) from front edge. Stitch the belt pieces together along all edges. Trim away extending seam allowances.