

120 Dress

Burda sizes **72, 76, 80, 84, 88,**

Length of dress from waist 120 cm

Materials

Silk crêpe,

width: 138 cm (54 1/2 ins)

length: 4.90 – 5.00 – 5.10 – 5.15 – 5.70 m

(5 3/8 – 5 1/2 – 5 5/8 – 5 3/4 – 6 1/4 yds).

Interfacig.

Vilene Bias Tape/stay tape.

1 invisible zip, 60 cm (24 ins) long, and a special presser foot.

Recommended fabrics: Lightweight, softly draping dress fabrics.

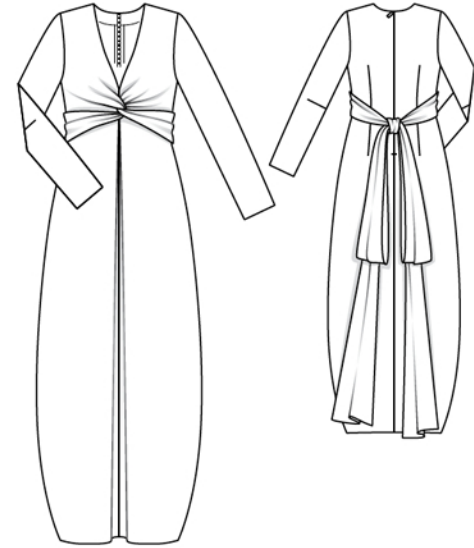
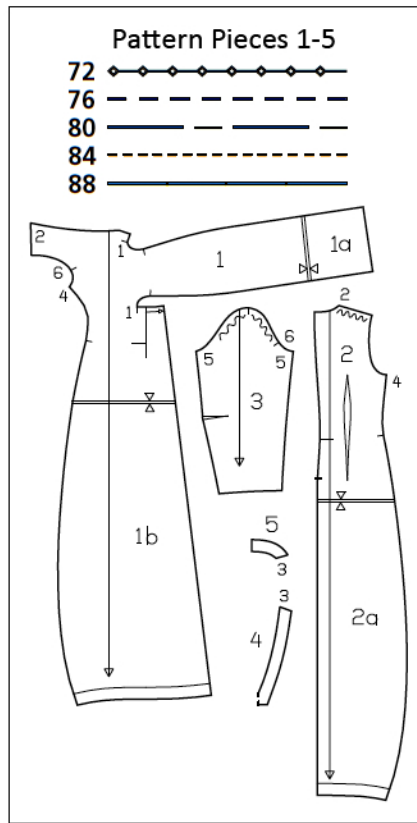
Preparations

Print the pattern out on letter or A4 sized paper. It is **very** important to not scale the document. Your pattern will print on multiple pages, which you will then tile together. Arrange the sheets on a large, hard and flat surface matching up the numbers and letters (i.e. 6A to 6A). Cut or fold one of the sides and match the edge to it's corresponding side. Then, tape down in place so paper is secure.

Trace the pattern pieces from the pattern sheet following the lines and markings for style 120 and your size. Trace the hem facings from pieces 1 and 2 as separate pattern pieces. The centres of these pieces will be laid on a fold when cutting.

burda style magazine patterns do not have seam allowance included.

Seam and hem allowance to be added: Seams and edges 1.5 cm (5/8 in), curved seam (seam number 1) 7 mm (1/4 in), sleeve hems 4 cm (1 5/8 ins) (flare sleeve hem allowances).



Cutting Out

- 1 front with integrated tie band 2x
- front hem facing, on a fold 1x
- 2 back 2x
- back hem facing, on a fold 1x
- 3 sleeve 2x
- 4 front neck facing, on a fold 1x
- 5 back neck facing 2x

Draft the following piece NOT included in the pattern:

- a) 2 tie band pieces, 195 cm (76 3/4 ins) long, 22 – 23 – 24 – 25.5 – 27 cm (8 3/4 – 9 1/8 – 9 1/2 – 10 – 10 3/4 ins) wide.

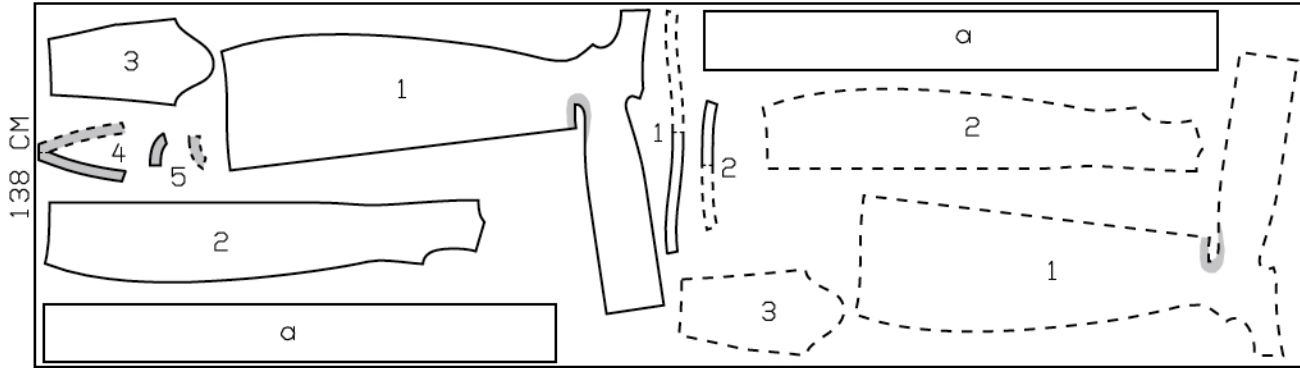
Interfacing: See pattern layout. Iron Vilene Bias Tape/stay tape to wrong side of armhole edges and front shoulder edges.

Cutting layouts on next page.

Sewing Continued...

Lower edge of dress: Stitch side seams on hem facing pieces. Stitch facing right sides together with lower edge of dress. Turn facing to inside and press edge. Sew inside edge of facing in place loosely by hand.

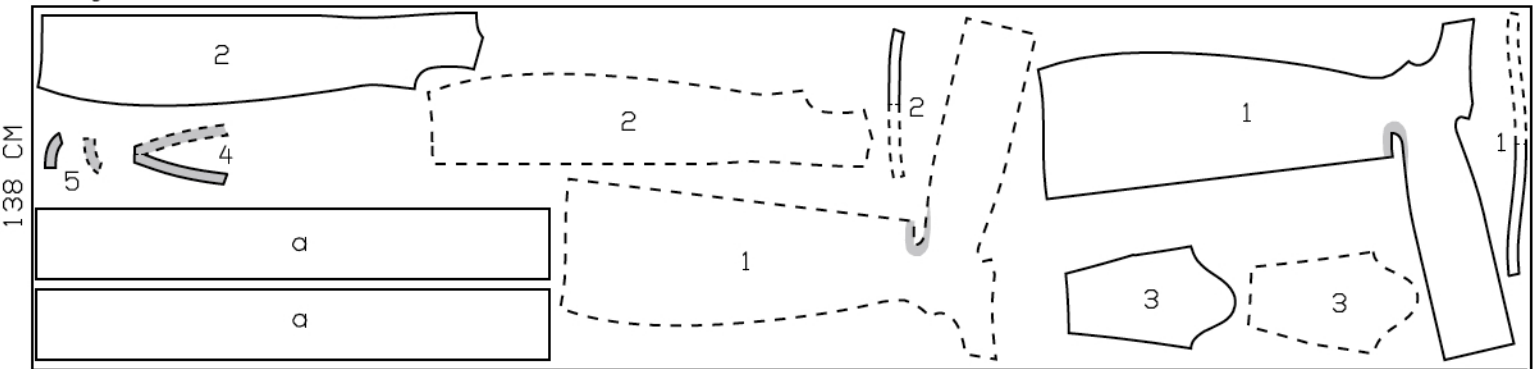
Sizes 72-84
selvedge



Cut from a single layer of fabric, right side facing up. Pieces shown with a broken outline should be placed on the fabric with their printed side facing down.

selvedge

Size 88
selvedge



selvedge

Sewing

Stitch centre seams on front, beginning short upper seam exactly at marked point of neck edge. Press seam allowances open. Lay pleat in direction of arrows and baste to upper edge.

Fold integrated tie bands in half lengthwise, right side facing in. Pin and stitch curved edges together, from marking to marking (seam number 1). Clip seam allowances at marking, at seam number 1, and clip allowances of curves several times. Stitch horizontal edges of front right sides together, matching centre seams. Turn tie bands right side out. Press allowances of horizontal seam up.

Stitch back darts and press toward centre. Sew invisible zip to back opening edges, see the "Helpful Hint" on page 3. Stitch centre back seam from lower edge to zip.

Stitch shoulder seams (seam number 2). Stitch shoulder seams of facing. Press seam allowances open.

Face neck edge: Pin facing right sides together with neck edge. At zip opening, turn facing back, approx. 5 mm (3/16 in) before edge of opening, and pin to upper edge. Turn seam allowances on opening edges to outside and pin to neck edge, over facing. Stitch along neck edge. Clip seam allowance of facing into point of neck edge. Trim seam allowances of neck edge. Turn facing and allowances on zip opening edges to inside. Sew facing to zip tapes. Sew inside edge of facing to seams.

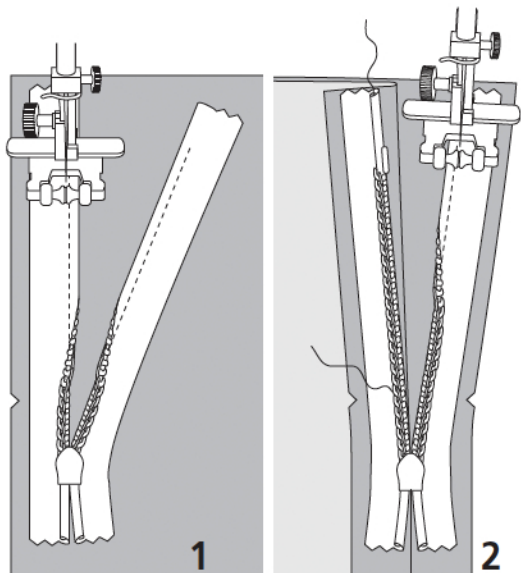
Stitch side seams (seam number 4).

Press hem allowance to inside and sew in place by hand.

Stitch darts in sleeves. Press darts up. Stitch sleeve seams. Press sleeve hem allowances to inside and sew in place by hand.

Set in sleeves, easing sleeve caps.

Stitch the separate tie band pieces to the integrated tie bands. Now make these seams flat-felled seams as follows: Press seam allowances to one side. Trim the seam allowance which lies below to 5 mm (3/16 in) wide. Turn under edge of seam allowance which lies on top and baste it in place. Work from right side to stitch 7 mm (1/4 in) from the seam. Press allowances on edges of tie bands to wrong side, turn raw edges under, and stitch. Tie bands in a large bow at centre front. Twist the tie bands together in front, then lay toward back and tie together in a large bow in back.



These special zippers come in various lengths. The zipper should be at least 2 cm (3/4 in) longer than the slit. It is sewn in place before the seam below the slit is stitched. A special presser foot is required to sew the zipper in place.

Sewing the zipper in place:

Open the zipper and push the coil back with your thumbnail to reveal the seam marking between the tape and the coil. Place the open zipper right side down on the right fabric side of one slit edge.

In order to stitch the zipper in place exactly along the marked seam line, you must first calculate the distance between the tape edge and the fabric edge as follows: width of seam allowance minus 1 cm (3/8 in) tape width = distance from edge of fabric. This will yield a value of 5 mm (3/16 in) if the width of the seam allowance is 1.5 cm (5/8 in).

Pin the top end of the zipper tape in place, the calculated distance from the edge of the fabric. The bottom end of the zipper will extend past the marked end of the slit. Place the presser foot on the zipper so that the coil is in the notch to the right of the needle (1). Stitch zipper in place, from the top to the marked end of the slit. Close zipper.

Place the other zipper tape face down on the opposite slit edge and pin in place at the top. Open zipper again. Place the presser foot on the top end of the zipper so that the coil is in the notch to the left of the needle (2). Sew the zipper in place, from the top to the end of the slit. Close zipper.

Now stitch the seam below the zipper, from bottom to top. Turn the loose lower end of the zipper out of the way, over the seam allowance. Stitch as close as possible to the last stitches of the zipper seams. Trim away excess zipper and bind the end with a scrap of fabric.

Additional Information:

Burda patterns do not include seam and hem allowances. We recommend adding 1-2 cm (3/8 - 3/4 inch) for seams and 2-5 cm (3/4 - 2 inch/es) for hems. Refer to your specific pattern instructions for exact measurements.

The fabric requirements are based on the fabric used for the original designs. These amounts will change if you use fabric of a different width. The pattern of the fabric determines whether all the pieces must be cut in the same direction or whether some can be reversed to save fabric.

The cutting layout printed with the instructions shows the best way to place the pattern pieces on our original fabric. Fold the fabric double with the right side facing in. The fabric then has a fold edge and a selvedge edge. When cutting from a single fabric layer, the right side should face up.

Pattern pieces which are shown in the cutting layout with broken outlines should be pinned to the fabric with their printed side facing down.

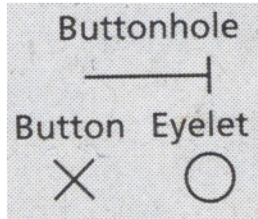
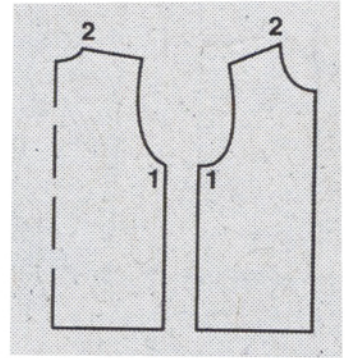
Grey shaded areas in the cutting layout indicate which pieces are to be interfaced.

Transfer the pattern piece lines to the wrong side of your fabric with burda dressmaker's carbon paper. Hand-baste along lines (e.g. for pockets or centre front) to make them visible on the right side of the fabric.

Key Symbols:

Seam numbers

show where pattern pieces must be sewn together. Match pieces with the same numbers.

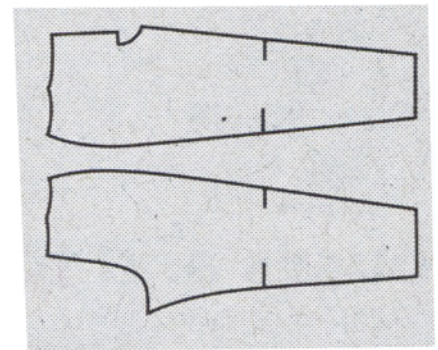


Seam marks

on long seams. Match the small symbols to one another.



Presser foot is the symbol for seam and top-stitching lines.



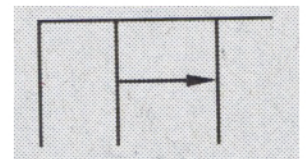
Scissors

indicate edges to be cut without seam allowances and also slash lines, e.g. pocket openings.



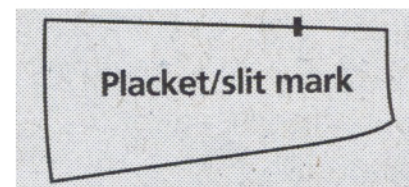
Pleat symbol

Fold pleat in direction of arrow.



Placket/slit mark

Indicates beginning/ end of placket/slit.



Gather
Ease
Stretch

