

110 Dress

Burda sizes 36, 38, 40, 42, 44

Length from waist 55 cm (21 3/4 ins)

Materials

Crêpe satin,
width: 140 cm (55 ins)
length: sizes 36, 38: 1.50 m (1 3/4 yds),
sizes 40, 42, 44: 1.55 m (1 3/4 yds).

Interfacing 35 m (1/2 yd) long and 90 cm (36 ins) wide.

1 invisible zip, 60 cm (24 ins) long.

Recommended fabrics: Softly draping dress fabrics. Use the shiny side of crêpe satin as the right side.

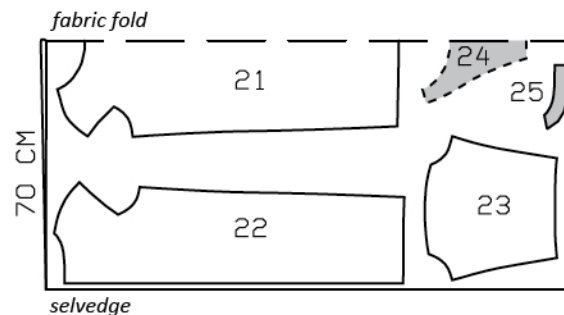
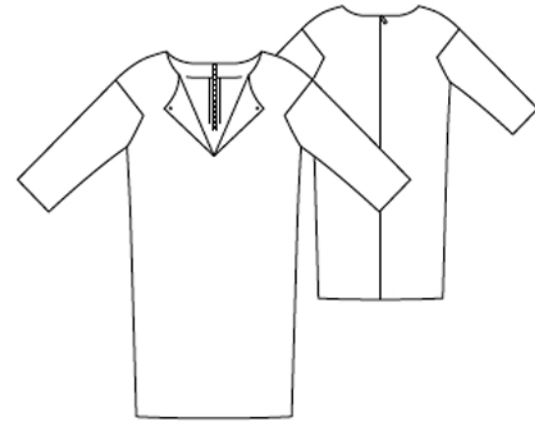
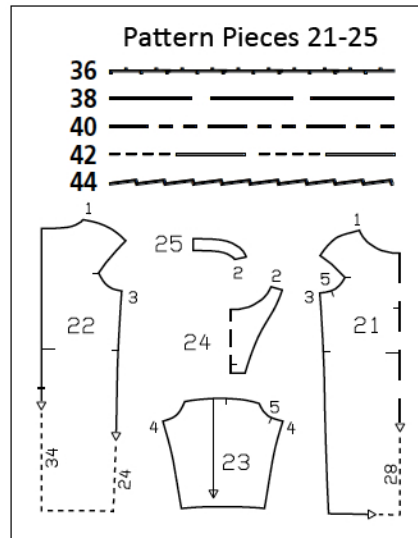
Preparations

Print the pattern out on letter or A4 sized paper. It is **very important** to not scale or fit any of the pages, you must print the document in **actual size**. Your pattern will print on multiple pages, which you will then tile together. Arrange the sheets on a large, hard and flat surface matching up the numbers and letters (i.e. 6A to 6A). Cut or fold one of the sides and match the edge to it's corresponding side. Then, tape down in place so paper is secure.

Trace the pattern pieces from the pattern sheet following the lines and markings for the correct size and the correct style (110). This pattern also includes pattern pieces, lines and markings for other styles that should be ignored.

burda style magazine patterns do not have seam allowance included.

Seam and hem allowance to be added:
4 cm (1 5/8 ins) for hem and sleeve hems and 1.5 cm (5/8 in) at all other seams and edges.



Fold the fabric in half lengthwise, right side facing in.

Cutting Out

Crêpe satin:
21 front, on a fold 1x
22 back 2x
23 sleeve 2x
24 front facing, on a fold 1x
25 back facing 2x

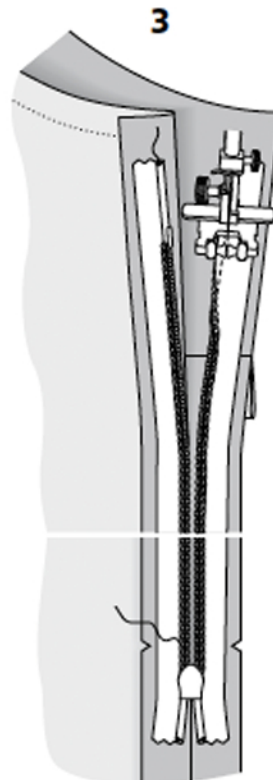
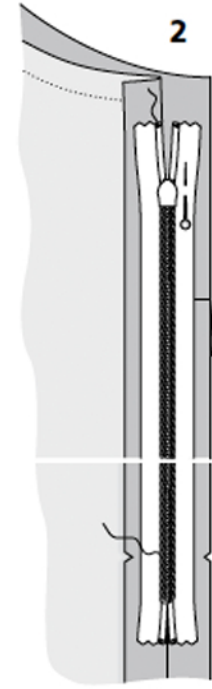
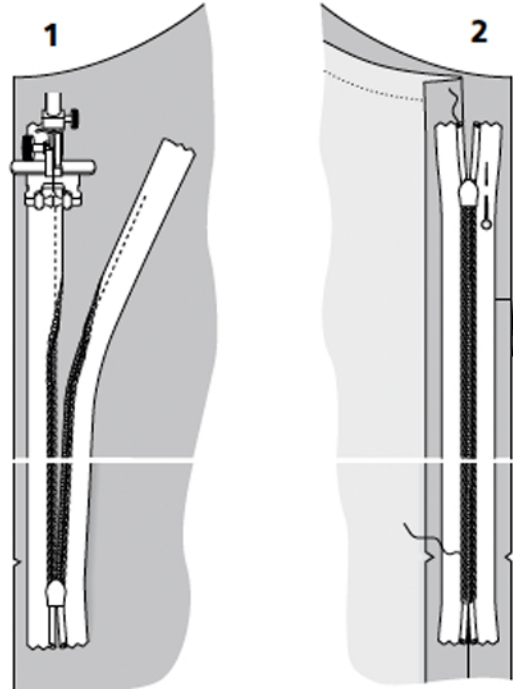
Interfacing
All pieces shaded in grey in the pattern layout must also be cut from interfacing, (piece 24 & 25). Iron interfacing pieces to the wrong side of corresponding fabric pieces. Also iron pieces of interfacing, approx. 3 x 3 (1 1/4 x 1 1/4 ins), to wrong side of front and back pieces, over corners of sleeve inset seams, and over bottom end of slit on front.

Sewing**Invisible zip, centre back seam:**

Open the zip and push the coil back with your thumbnail to reveal the marked seam line between the zip tape and the coil. Place the open zip face down on the right fabric side of the right back opening edge so that the teeth of the zip begin at the marked neck edge.

In order to stitch the zip in place, exactly along the marked seam line, the edge of the zip tape must lie 0.5 cm (1/4 in) from the fabric edge (i.e. 1.5 cm/ 5/8 inch seam allowance width minus 1 cm/ 3/8 inch zip tape width = distance from fabric edge). Pin top end of zip tape in place this distance from the edge of the fabric. The bottom end of the zip will extend past the marked end of the opening. Place the presser foot on the zip so that the coil is in the notch to the right of the needle. Stitch zip in place from the top to the marked end of the opening (image 1). Close zip. Place the other zip tape face down on the left back opening edge (right side of fabric) and pin the top in place with a single straight pin (image 2). Open zip again.

Place the presser foot on the top end of the zip so that the coil is in the notch to the left of the needle. Sew the zip in place, up to the slit mark (image 3). Close zip. Lay back pieces right sides together, pin centre back seam edges together from lower edge to slit mark. Begin at lower edge and stitch as close as possible to the last stitches of the zip seams, turning loose end of zip out of the way, over the seam allowances (image 4). Press seam allowances open and neaten edges.



Sewing Continued...**Shoulder seams:**

Lay front right sides together with back, pin shoulder seams. Stitch (image 5). Press seam allowances open and neaten edges.

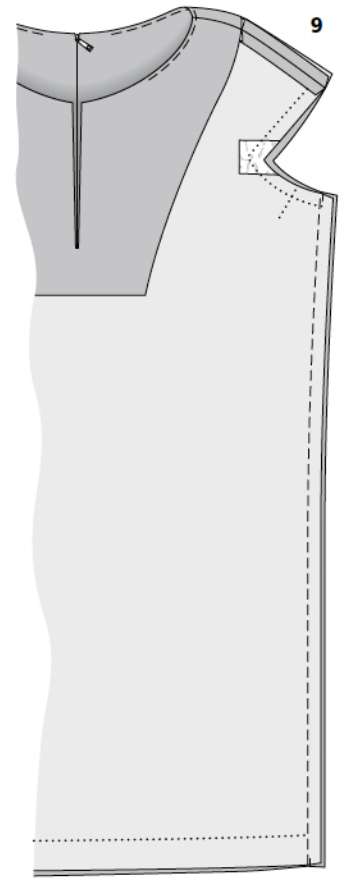
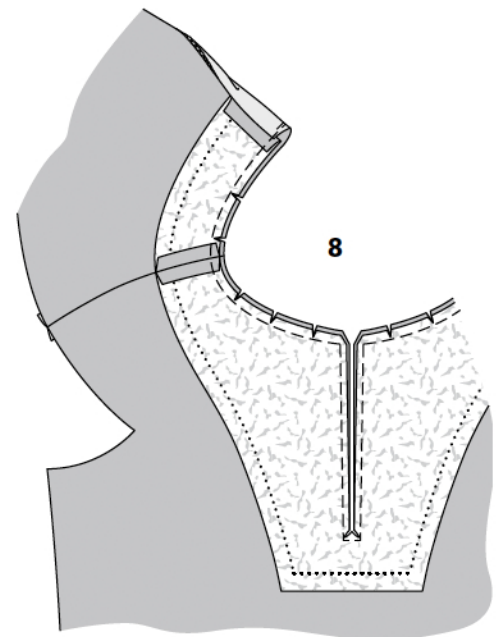
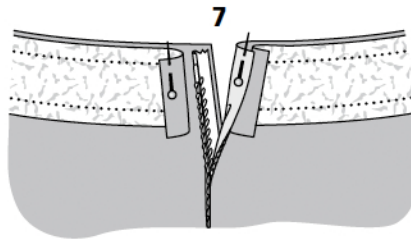
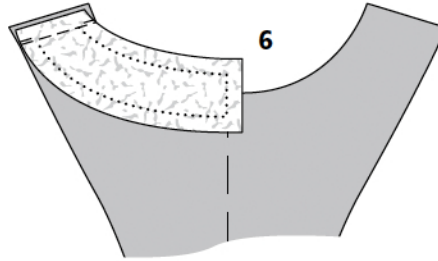
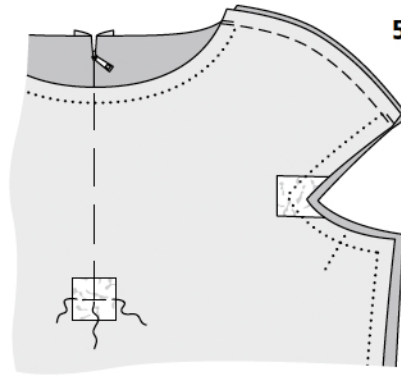
Lay shoulder edges of back facings right sides together with shoulder edges of front facing. Pin shoulder seams. Stitch (image 6). Press seam allowances open. Neaten inside edge of facing.

Neck edge and front slit:

Lay facing right sides together with dress. Pin together along neck edge. Fold back facing edges to outside, 5 mm (3/16 in) before marked seam line, and pin. Fold allowances on slit edges of dress, with zip halves, to outside and pin to neck edge, over facing (image 7). Pin front facing to front, on each side of marked slash line. Stitch along neck edge and on front stitch closely around slash line (approx. 2 mm / a scant 1/8 in from line) and stitch horizontally across lower end of slit. Slash front and facing between lines of stitching. At lower end of slit, clip into corners, close to each last stitch. At neck edge, trim seam allowances, trimming corners diagonally (image 8). Clip allowances along curves. Fold zip and back opening edges to inside. At neck edge, turn facing up and stitch to seam allowances, as far as possible, close to seam. Turn facing to inside. Press edges. Sew facing to seam allowances of shoulder seams and to zip tapes.

Side seams:

Lay front right sides together with back. Pin side seams. Stitch (image 9). Press seam allowances open and neaten edges of seam allowances.



Sewing Continued...**Sleeves:**

Fold sleeves lengthwise, right side facing in. Pin sleeve seams. Stitch seams and, beginning at marked hem line, stitch diagonally toward lower edge, ending approx. 5 mm (3/16 in) from side edge (image 10). Press seam allowances open and neaten edges.

Setting in sleeves:

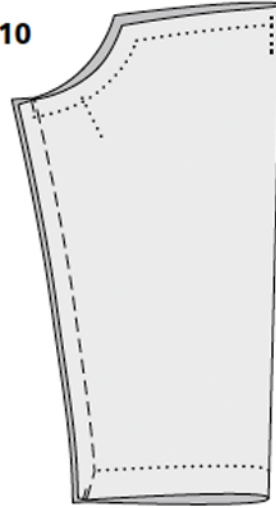
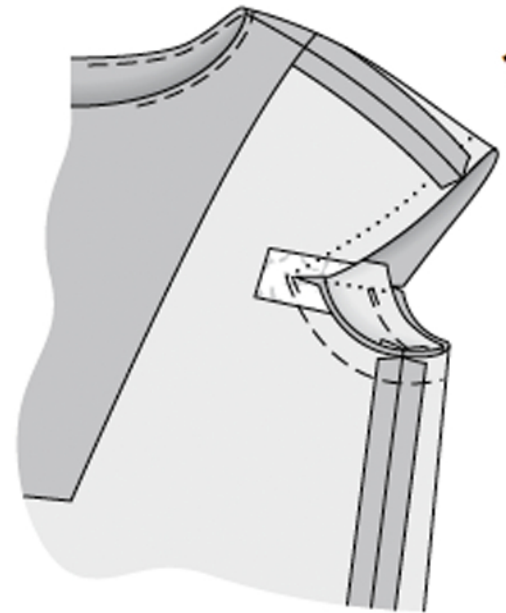
First pin sleeves right sides together with underarm edge, matching sleeve and side seams and matching seam marks (image 5) on sleeve and front. Pin sleeves in place, up to the corner. Stitch. Clip seam allowances of front and back into corners, close to each last stitch (image 11). Pin sleeve to upper sleeve attachment edge, from corner to corner, matching seam mark on sleeve to shoulder seam. Stitch front and back to sleeve, from corner to corner (image 12). Press seam allowances open above corners, do not press below corners. Neaten edges of seam allowances.

Hem, sleeve hems:

Neaten edges of hem allowances. Press hem allowances of dress and sleeves to wrong side and sew in place loosely by hand.

Neck edge:

Fold front slit edges to outside and sew corners to dress front, with one small cross stitch each.

10**11****12**