

### 128 Blouse

Sizes 36, 38, 40, 42, 44

Back length approx. 70 cm (28 ins)

### Materials

Blouse poplin,

width: 140 cm (55 in)

length: 1.15 – 1.15 – 1.20 – 1.20 – 1.45 m

(13/8 – 13/8 – 13/8 – 13/8 – 13/4 yds).

Vilene/Pellon G 785.

5 buttons.

Recommended fabrics: Blouse fabrics.

### Preparations

Print the pattern out on letter or A4 sized paper. It is **very important** to not scale or fit any of the pages, you must print the document in **actual size**. Your pattern will print on multiple pages, which you will then tile together. Arrange the sheets on a large, hard and flat surface matching up the numbers and letters (i.e. 6A to 6A). Cut or fold one of the sides and match the edge to it's corresponding side. Then, tape down in place so paper is secure.

Trace the pattern pieces from the pattern sheet following the lines and markings for the correct size and the correct style (128). This pattern also includes pattern pieces, lines and markings for style 129 that should be ignored.

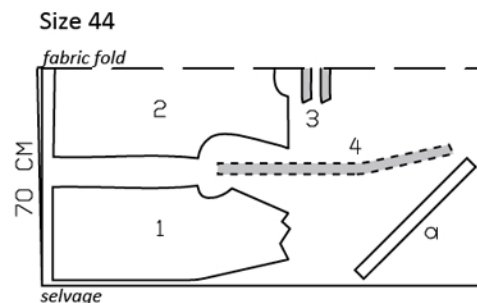
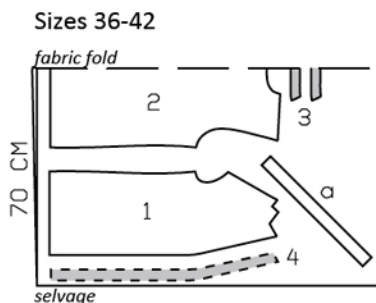
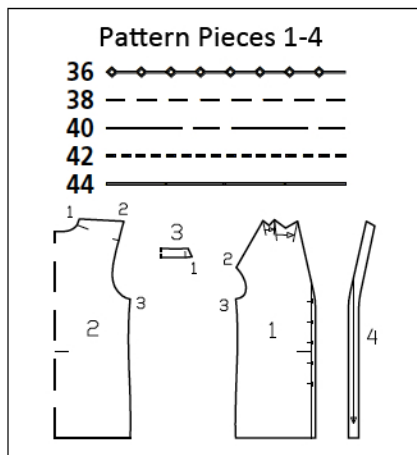
Pleat arrows on piece 1 are marked for size 36. For the other sizes, mark the pleat arrows according to the size lines.

**burda style magazine patterns do not have seam allowance included.**

To be added:

Seams and edges 1.5 cm (5/8 in),

hem 4 cm (1 5/8 ins).



Cut pieces from a double layer of fabric, right side facing in. Use fabric with a width of 140cm.

### Cutting Out

1 front	2x
2 back, on a fold	1x
3 standing collar, on a fold	2x
4 front facing	2x

Draft the following piece NOT included in the pattern:

a) 2 bias strips for armholes,  
 length: 44 – 46 – 48 – 49 – 51 cm  
 (17 1/4 – 18 1/8 – 19 – 19 1/4 – 20 1/4 ins)  
 width: 4 cm (15/8 ins) (incl. allowances).

**Interfacing:** See pattern layout. Fuse interfacing to wrong side of fabric.

## Sewing

On upper edge of each front, fold pleats in direction of arrows as indicated on pattern and baste down in place. Pin the front facings right sides together with the fronts. Stitch facing to blouse up front and along neck edges. Trim seam allowances. Turn the facings to inside and press edges. Baste upper facing ends in place.

Stitch outer collar piece to back neck edge. Trim seam allowances. Press allowances onto collar.

Stitch integrated back yokes and ends of collar to upper front edges – allowances on upper edges of collar extend past front neck edge. Press allowances onto yokes and collar.

Lay the inside collar piece right sides together with the attached outer collar piece. Stitch along upper collar edge and trim allowances. Turn the collar right side out. Turn in inside edges and sew in place.

**Armholes and side seams:** Fold the bias strips in half lengthwise and press, right side facing out. Stitch the folded bias strips to armhole edges so that fold edge of each strip lies on the garment piece, 1 cm (3/8 in) past the seam line. Trim the seam allowances. Turn the bias strips to the inside and press edges. Stitch the side seams, turning the bias strips up and stitching the ends together. Press the seam allowances open. Turn bias strips to inside again. Topstitch 7 mm (1/4 in) from armhole edges.

Unfold facings at hem. Turn hem allowance to inside, turn in, and stitch 2 cm (3/4 in) from edge. Turn facings to inside again and sew to hem allowance.

Work buttonholes in right front, and buttons in left front.

