

### 150 Dirndl for Girls

#### with apron

Height 98, 104, 110, 116, 122 cm

Length of dress from waist

34 – 36 – 38 – 40 – 42 cm

Skirt joining seam is 1 cm above waist

#### Materials

Dress:

Linen,

width: 140 cm (55 in)

length: 1.25 – 1.30 – 1.35 – 1.40 – 1.45 m

(1 1/2 – 1 1/2 – 1 5/8 – 1 5/8 – 1 3/4 yds).

Rickrack, 5 mm (3/16 in) wide and 1.15 – 1.15 – 1.20 – 1.20 – 1.25 m (1 3/8 – 1 3/8 – 1 3/8 – 1 3/8 – 1 5/8 yds) long.

4 buttons and 1 small sew-on snap fastener.

For the brooch: 1 large safety pin, 3 large beads and one small bead, pendant stars and coins, a remnant of fabric, stuffing material.

Apron:

Square scarf, 56 cm x 56 cm (22 1/4 x 22 1/4 ins).

A piece of plain fabric for waistband and sashes, approx. 35 x 75 cm (14 x 30 ins).

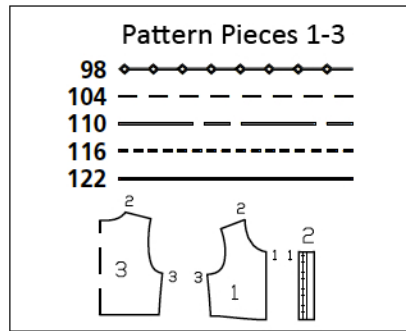
Cotton yarn for the fringe.

Recommended fabrics: Dress fabrics with some body.

#### Preparations

Print the pattern out on letter or A4 sized paper. It is **very important** to not scale the document. Your pattern will print on multiple pages, which you will then tile together. Arrange the sheets on a large, hard and flat surface matching up the numbers and letters (i.e. 6A to 6A). Cut or fold one of the sides and match the edge to its corresponding side. Then, tape down in place so paper is secure.

Trace the pattern pieces from the pattern sheet following the lines and markings for style 150 and your size. The buttonholes on piece 2 are marked for size 98. For sizes 104 – 122, mark the top buttonhole the same distance from upper edge as



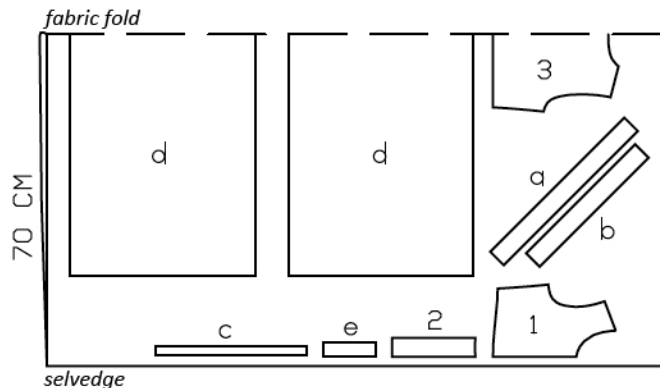
for size 98. The bottom buttonhole is the same for all sizes. Space the other buttonholes evenly in between.

**burda style magazine patterns do not have seam allowance included.**

Seam and hem allowance to be added:

Seams and edges 1.5 cm (5/8 in), frills 7 mm (1/4 in), hem 5 cm (2 ins).

For the apron, add 1.5 cm (5/8 in) wide seam allowance to upper edge only (for waistband joining seam).



Cut from a double layer of fabric, right side facing in.

#### Cutting Out

Dress

Linen:

1 front 2x

2 front band 2x

3 back, on a fold 1x

**Draft the following pieces NOT included in the pattern:**

a) bias strip for neck edge, 38 – 39 – 40 – 41 – 41 cm (15 – 15 1/2 – 15 3/4 – 16 1/4 – 16 1/4 ins) long, 4 cm (1 5/8 ins) wide (incl. allowances),

b) 2 bias strips for armholes, 31 – 32 – 32 – 33 – 34 cm (12 1/4 – 12 3/4 – 12 3/4 – 13 – 13 1/2 ins) long, 4 cm (1 5/8 ins) wide (incl. allowances),

### Cutting Out Continued...

c) 2 frills, 29 – 30 – 32 – 33 – 35 cm (11 1/2 – 12 – 12 3/4 – 13 – 13 3/4 ins) long, 2 cm (3/4 in) wide,

d) 2 skirt panels, 98 – 100 – 102 – 103 – 107 cm (38 3/4 – 39 1/2 – 40 1/4 – 40 3/4 – 42 1/4 ins) wide, 35 – 37 – 39 – 41 – 43 cm (13 3/4 – 14 1/2 – 15 1/2 – 16 1/4 – 17 ins) long,

e) front slit facing, 11 cm (4 3/8 ins) long, 3 cm (1 1/4 ins) wide (incl. allowances).

#### Apron

##### Scarf:

apron piece, 56 cm (22 1/4 ins) wide, 27 – 29 – 31 – 32 – 34 cm (10 3/4 – 11 1/2 – 12 1/4 – 12 3/4 – 13 1/2 ins) long.

##### Plain fabric:

waistband, 20 cm (8 ins) long, 4 cm (1 1/2 ins) wide, finished width 2 cm (3/4 in),

2 sash pieces, 64 – 65 – 67 – 68 – 71 cm (25 1/4 – 25 3/4 – 26 1/2 – 26 3/4 – 28 ins) long, 10 cm (4 ins) wide, finished width 5 cm (2 ins).

### Sewing

#### Dress

Neaten allowance on one lengthwise edge of each frill. Press allowance to inside and stitch. Gather frills and baste to vertical edges of fronts. Baste ends of frills to neck edge and to lower front edge.

Stitch shoulder seams of bodice. Press seam allowances open.

Neck edge: Press bias strip lengthwise, right side facing out. Pin folded bias strip to neck edge so that fold edge lies on garment piece, 1 cm (3/8 in) past seam line, and ends of strip lie on front allowances. Stitch along neck edge. Trim seam allowances. Turn bias strip to inside. Press edge.

Stitch rickrack to bodice, 7 mm (1/4 in) from neck edge, hiding start and end of rickrack under frill.

Face armhole edges with bias strips, see neck edge. Stitch rickrack along armhole edges.



Stitch side seams. Sew top ends of seam allowances in place by hand.

Stitch front bands to vertical edges of fronts, catching frills. Press seam allowances of band joining seams and of other long edges of bands onto bands. Fold bands on fold line, right side facing in. Stitch across top end. Turn bands right side out and baste inside edges in place. Topstitch bands close to joining seams. Work buttonholes in right band.

Front slit: Use basting thread to mark a slit, 8 cm (3 1/4 in) long, in centre of front skirt panel. Pin slit facing right sides together with skirt panel over slit mark. Work from wrong side to stitch closely around marking. Slash between line of stitching. Turn facing to inside. Press edges of slit.

Stitch side seams of skirt.

Gather skirt and attach to bodice: Gather upper edge of skirt to match edge of bodice, beginning and ending 2 cm (3/4 in) from each front slit edge. Pin skirt to bodice – matching front slit edges to band edges and not catching slit facing. At front slit edges, turn facing to outside and pin in place, over front. Stitch skirt to bodice. Turn facing to inside. Turn skirt down. Press seam allowances of skirt joining seam up, from each band joining seam. Topstitch close to slit edges. Fasten slit of skirt with one snap fastener.

Press hem allowance to inside and stitch 4 cm (1 5/8 ins) from edge.

#### Apron

Gather upper edge of apron to length of waistband. Stitch waistband to upper edge of apron. Press seam allowances of joining seam and of other long edge of waistband onto waistband. Fold waistband in half lengthwise and press, wrong side facing in. Unfold waistband again.

Fold sashes lengthwise, right side facing in. Stitch lengthwise edges together. Turn sashes right side out and press. Topstitch close to edges. Fold one end of each sash lengthwise, right side facing in, and stitch across end. Trim seam allowances and neaten edges. Turn each sash end right side out, to a point, and press. Make folds in straight end of sashes, for a finished width of 2 cm (3/4 in), and baste to ends of outer half of waistband. Fold waistband in half to outside and stitch across ends. Turn waistband right side out. Baste inside edge in place. Topstitch waistband close to ends and close to joining seam.

## Sewing Continued...

For the fringe, cut pieces of cotton yarn, 15 cm (6 in) long. Use an embroidery needle to knot fringes, of 3 pieces of yarn each, along apron edges. Space fringes approx. 1.5 cm (5/8 in) apart.

Brooch:

Fabric flowers

For each flower cut 2 circles of leftover batiste, approx. 5 cm (2 ins) in diameter. Lay 2 circles together, right sides facing. Stitch together, 5 mm (3/16 in) from edge, leaving an opening for turning. Turn circle right side out and stuff. Sew opening closed. Make 5 petals, evenly spaced, by making a straight stitch, from centre to edge, and pulling it tightly toward centre. Sew a bead to centre of flower. Sew pieces of ribbon and narrow cord of various lengths to underside of flower. Attach flowers to brooch pin and pin to dress or sew them in place, without a pin.

Slip beads, star, coin and flower onto safety pin. Sew pin to dress with few stitches.

## Additional Information:

**Burda patterns do not include seam and hem allowances.** We recommend adding 1-2 cm (3/8 - 3/4 inch) for seams and 2-5 cm (3/4 - 2 inch/es) for hems. Refer to your specific pattern instructions for exact measurements.

The fabric requirements are based on the fabric used for the original designs. These amounts will change if you use fabric of a different width. The pattern of the fabric determines whether all the pieces must be cut in the same direction or whether some can be reversed to save fabric.

The cutting layout printed with the instructions shows the best way to place the pattern pieces on our original fabric. Fold the fabric double with the right side facing in. The fabric then has a fold edge and a selvedge edge. When cutting from a single fabric layer, the right side should face up.

Pattern pieces which are shown in the cutting layout with broken outlines should be pinned to the fabric with their printed side facing down.

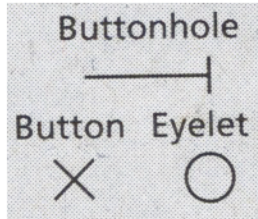
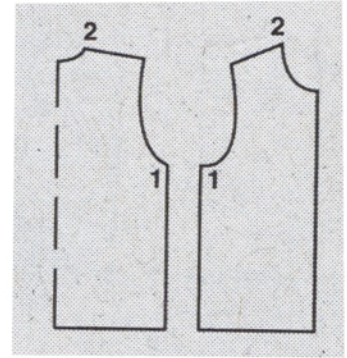
Grey shaded areas in the cutting layout indicate which pieces are to be interfaced.

Transfer the pattern piece lines to the wrong side of your fabric with burda dressmaker's carbon paper. Hand-baste along lines (e.g. for pockets or centre front) to make them visible on the right side of the fabric.

## Key Symbols:

### Seam numbers

show where pattern pieces must be sewn together. Match pieces with the same numbers.

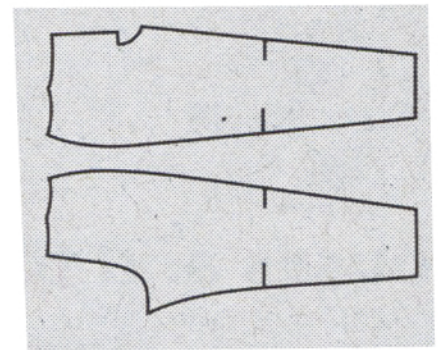


### Seam marks

on long seams. Match the small symbols to one another.



**Presser foot** is the symbol for seam and top-stitching lines.



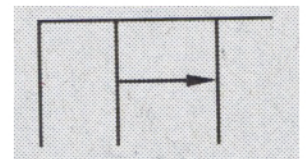
### Scissors

indicate edges to be cut without seam allowances and also slash lines, e.g. pocket openings.



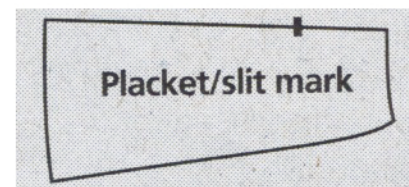
### Pleat symbol

Fold pleat in direction of arrow.



### Placket/slit mark

Indicates beginning/end of placket/slit.



**Gather**  
**Ease**  
**Stretch**

