

### 117 Dress

Burda sizes 34, 36, 38, 40, 42  
Length from waist 58 cm (23 ins)

### Materials

Stretch jersey,  
width: 150 cm (59 in)  
length: 0.90 m (1 yd) for all sizes.

Twin sewing machine needle.

Recommended fabrics: Stretch jersey. Use two-way stretch jersey fabrics only.

### Preparations

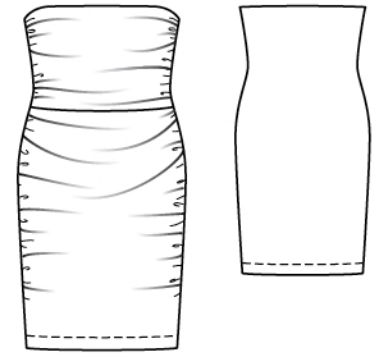
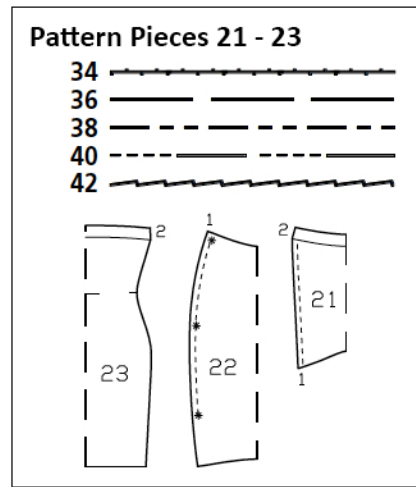
Print the pattern out on letter or A4 sized paper. It is **very important** to not scale the document. Your pattern will print on multiple pages, which you will then tile together. Arrange the sheets on a large, hard and flat surface matching up the numbers and letters (i.e. 6A to 6A). Cut or fold one of the sides and match the edge to it's corresponding side. Then, tape down in place so paper is secure.

Trace the pattern pieces from the pattern sheet. Follow lines and details for style 117.

**BurdaStyle patterns do not have seam allowance included. Add seam and hem allowances:** Seams and edges 1.5 cm (5/8 in), hem 4 cm (1 5/8 ins).

### Cutting Out

21 upper front, on a fold 1x  
22 lower front, on a fold 1x  
23 back, on a fold 1x



### Sewing

Note: Stitch seams on stretch fabrics with a special stretch stitch or at a narrow zigzag setting. Stitch hems with a twin sewing machine needle to keep the edges elastic.

Stitch upper front to lower front. Press seam allowances up. Fold self-facing of front to inside, on fold line, and press. Baste to side edges. Gather side front edges as indicated on pattern pieces.

Lay front right sides together with back and pin side seam edges together – facing extends at upper back edge. Fold facing down over upper front edge and pin to side seam edges. Stitch side seams. Neaten seam allowances together. Turn back facing to inside. Press side seam allowances onto back. Press upper back edge.

Press hem allowance to inside. Working from right side and using the twin needle, stitch hem 3 cm (1 1/4 ins) from lower edge.

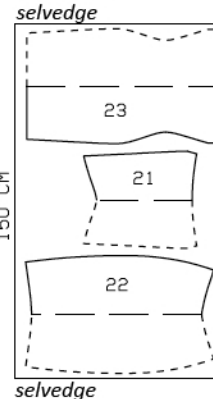
### Pattern layouts

#### 150 cm wide fabric

#### Sizes 34 – 40



#### Size 42



Right side faces in on a double layer of fabric. Right side faces up on a single layer of fabric.

## Additional Information:

**Burda patterns do not include seam and hem allowances.** We recommend adding 1-2 cm (3/8 - 3/4 inch) for seams and 2-5 cm (3/4 - 2 inch/es) for hems. Refer to your specific pattern instructions for exact measurements.

The fabric requirements are based on the fabric used for the original designs. These amounts will change if you use fabric of a different width. The pattern of the fabric determines whether all the pieces must be cut in the same direction or whether some can be reversed to save fabric.

The cutting layout printed with the instructions shows the best way to place the pattern pieces on our original fabric. Fold the fabric double with the right side facing in. The fabric then has a fold edge and a selvedge edge. When cutting from a single fabric layer, the right side should face up.

Pattern pieces which are shown in the cutting layout with broken outlines should be pinned to the fabric with their printed side facing down.

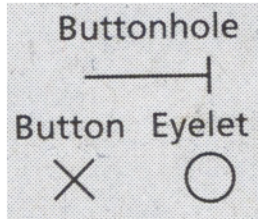
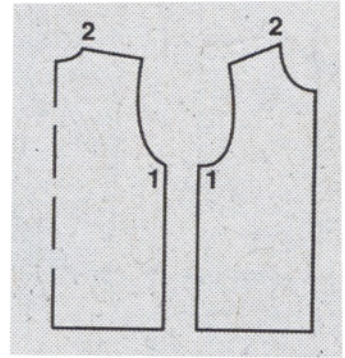
Grey shaded areas in the cutting layout indicate which pieces are to be interfaced.

Transfer the pattern piece lines to the wrong side of your fabric with burda dressmaker's carbon paper. Hand-baste along lines (e.g. for pockets or centre front) to make them visible on the right side of the fabric.

## Key Symbols:

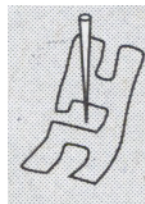
### Seam numbers

show where pattern pieces must be sewn together. Match pieces with the same numbers.

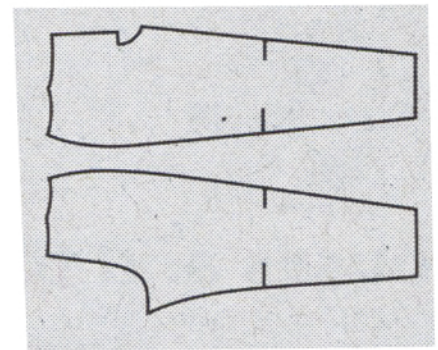


### Seam marks

on long seams. Match the small symbols to one another.



**Presser foot** is the symbol for seam and top-stitching lines.



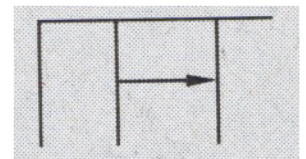
### Scissors

indicate edges to be cut without seam allowances and also slash lines, e. g. pocket openings.



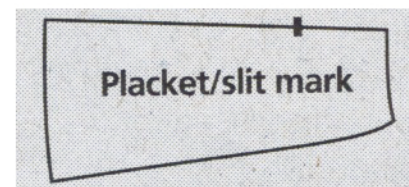
### Pleat symbol

Fold pleat in direction of arrow.



### Placket/slit mark

Indicates beginning/ end of placket/slit.



**Gather**  
**Ease**  
**Stretch**

